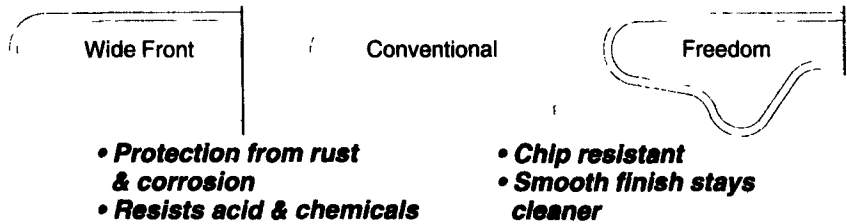


POWDER-COATED STEEL BARN EQUIPMENT

Loop Stalls Designed For Durability

Finished with baked on TGIC Polyester Powder Coating Superior to Epoxy!



- Protection from rust & corrosion
- Resists acid & chemicals

- Chip resistant
- Smooth finish stays cleaner

Wide Front Loop Stalls

Versatile design offers greater cow comfort. Generous lunge space for head & neck between top & bottom of loop.



Loop Stall

Construction Features:

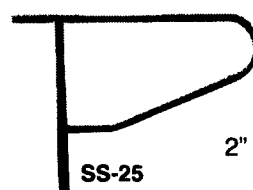
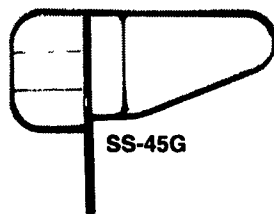
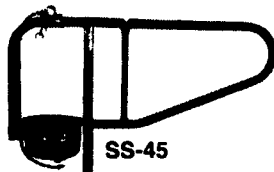
Heavy Duty Construction with 2 3/8" outside diameter high yield steel tubing with 12 gauge (.108) wall Spray arc transfer method used on welds

Suspended Comfort Stalls Manufactured to Last!

Finished with TGIC Polyester Powder Coating..Superior to Epoxy!

Install The Best!

- Increased comfort for cows
- Polyester finish stays cleaner
- Easy Access
- Adjustable tie rail

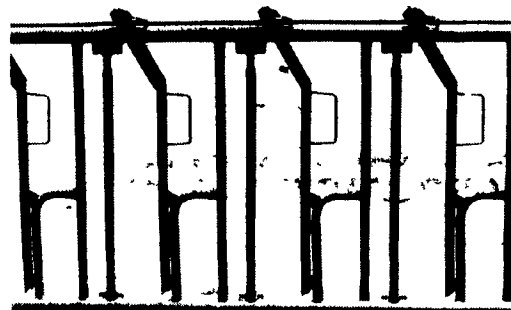


Fabricated for Durability & Dependability

- All welded construction for years of service.
- Constructed with 1.9 O.D. wall, high strength tube and 2" square post with 1/4" wall.

Heavy Duty Headlocks

Finished with TGIC Polyester Powder Coating...Superior to Epoxy!



3 Sizes Available To Meet Your Cattle Handling Needs

- CA Series: 7 locks per 10'
- HE Series: 6 locks per 10'
- CO Series: 4 or 5 locks per 10'

- Extra Heavy Construction
- yokes lock on individual catches
- Yoke stabilizer on large sizes
- Designed for easy entry & exit
- Removable neck bar



Install The Gates & Fencing That Are Manufactured To Last!

Finished with Top Grade TGIC Polyester Coating



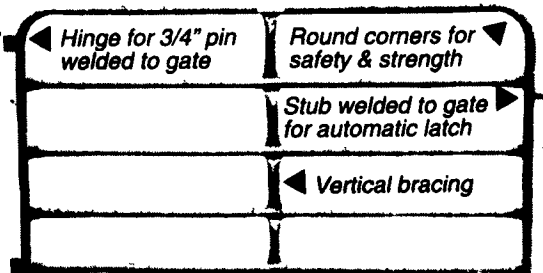
TGIC Powder Coating Finish:

- Is superior to epoxy
- Resists acid, chemicals
- Protects against rust, corrosion
- Resists chipping
- Stays cleaner

- Standard Heights:
- 4 bar: 38" high
 - 5 bar: 48" high
 - 6 bar: 54" high

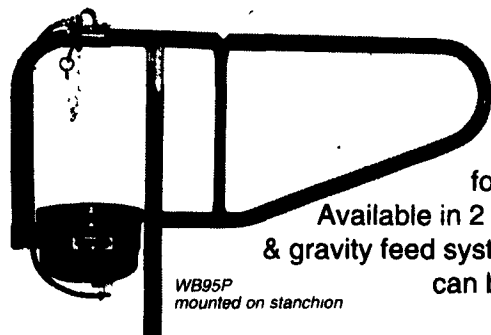
All Gates & Fencing manufactured of 1.9" outside diameter high yield steel tubing with 13 gauge wall.

13 gauge steel is 15% heavier than 14 gauge, 45% heavier than 16 gauge & 85% heavier than 18 gauge.



Bring Your Cows To The Super Bowl

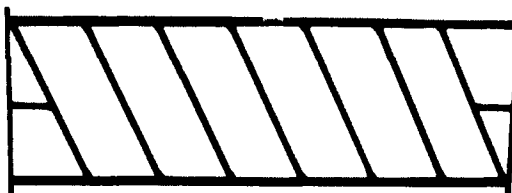
Increase Milk Production Naturally!



Water Bowls with Instant Recovery!

Supply fresh water continuously in larger bowls for more milk at no extra cost. Available in 2 models for both pressurized & gravity feed systems, the Zimmerman bowls can be built into new or added to existing tie stall housing.

- 3 gallon capacity
- Unbreakable PVC construction
- Exceptional durability
- Minimizes water waste



Slant Bar Feed Thru Fence Section

Custom Built to Any Length



295 Woodcorner Rd. • Lititz, PA 17543

717/738-7365

1 mile West of Ephrata

Hours: Mon.-Fri. 7-5; Sat.: 7-11

CALL OR WRITE FOR ADDITIONAL INFORMATION & THE NAME OF YOUR NEAREST DEALER