

Farm Show Competition Means More Than Ribbons For Stoltzfus Family

(Continued from Page A20)

keep the Suffolk flock because the potential for higher profits was with Jessica's Dorset flock.

"Suffolks are like feeding horses," Frank said. "Also Jessica's Dorsets are competitive at regional levels but the Suffolks were not."

Jason recalls that he was fortunate enough to attain two big rotating trophies the same year. He as named Shepherd of the Year on the

county level and won the supreme champion title for his steer at E-town Fair.

The past year has been an outstanding year for Jessica. She entered all the county fairs and never placed lower than second in any of the competitions. She showed the reserve champion breeding sheep at the county 4-H Roundup and the supreme champion sheep at Manheim Farm Show. In addition she placed first in

showmanship at every show but one.

Of the many trophies and ribbons won through county showing competitions, Jessica's most exciting moments were showing the supreme champion over all livestock in 1995 at the E-town Fair and being selected the winner of the Intell calf this year.

Ironically, Jason had won the Intell calf during his first year of steer showmanship. He credits that first year success to many years of sheep showmanship.

Jason prefers steers over showing sheep. He said of the costs for raising a beef project, "You put more into it, but you get more out of it."

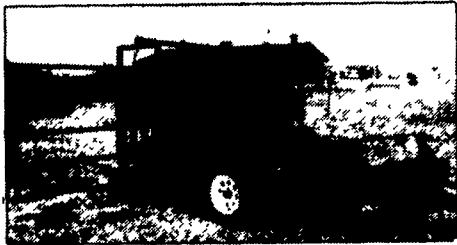
Jessica and Jason said that a classy steer should have lots of hair. They winter their steers outside to encourage hair growth, but the steers have access to the barn and will come inside if it is really cold.

During the warmer months, they often wet down the steers and run

(Turn to Page A25)

HEAVY DUTY HOOF TRIMMING TABLES

Endorsed by the International Hoof Trimming School of Wisconsin



- 12-year building experience in the tables design
- 2"x2" tube frame chute
- chute measures 75"x28"x75" high
- 4" casters for cradle fold-up
- Two hydraulic cylinders for extra stability
- tool box for D.C. pump and battery protection
- manure grate to keep work area clean

- 2 10-inch lift belts
- 3500 lb. axle with or without brakes



- fold away side gate
- removable head board
- 45 min. video from International Hoof Trimming School of Canada

Delivery Available

THREE MODELS TO CHOOSE
1. PORTABLE 2. STATIONARY 3. 3 POINT HITCH

BERKELMAN'S WELDING

RR 7, AYLMER, ONTARIO, CANADA N5H 2R6
(519) 765-4230

THE ENVIROSAFE Fuel Containment Systems Sizes 300-20,000 Gals.



1 (800) 555-4754

For More Information Call

MEMCO INC

1 (800) 555-4754

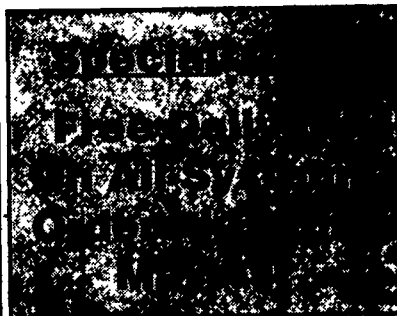
17949 W. Sr. 50

Killarney FL 34740

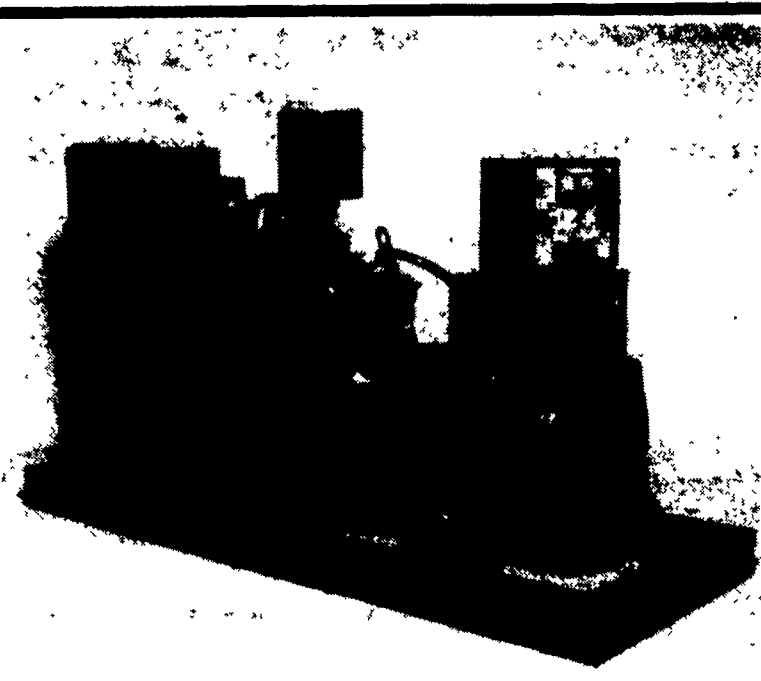
FAX (407) 656-1099

Easy Lease To Own

Our Systems Come
Ready To Pump Fuel



1 (800) 555-4754

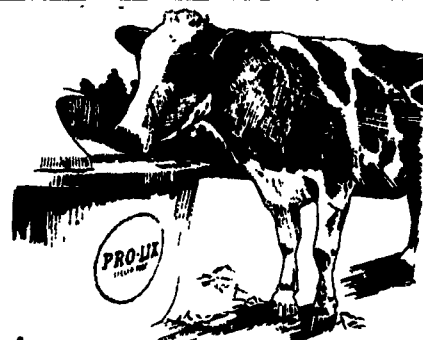


DEPENDABLE STANDBY POWER
PRIME RATE FINANCING NOW AVAILABLE

MAXIPOWER

Phone (717) 273-4544 • (800) 272-6294
Fax: (717) 273-5186

MAXIPOWER, LLC • 440 Schaeffer Road • Lebanon, PA 17042-9763



With The High Costs
Of Dry Feeds...
Look To Liquids...
Look to Pro-Lix®

- In the dairy business, income over feed cost is the name of the game. *Pro-Lix* liquid feed supplements offer dairymen the means to maximize this value while getting the most from their cow's natural abilities.
- *Pro-Lix* liquid feed supplements are concentrated sources of just what ordinary feeds lack: protein, energy, vitamins, minerals -- everything animals need for economical milk production and growth.
- For replacement heifers, *Pro-Lix* means faster maturity and assurance that they'll get to the milking herd on time. If you trust your heifers to forage alone, they might not make it.
- For lactating cows, the nitrogen content of *Pro-Lix* means plenty of protein available for milk production and growth.
- Finally, for dry cows, *Pro-Lix* not only helps maintain their health during the dry period it prepares them for the next lactation. The Ca:P ration in *Pro-Lix* helps control milk fever, while the Vitamin E and selenium aids in clean-up after the birth of a calf.

Best of all, *Pro-Lix* works with all types of pasture grass or forage, as a free-choice supplement, a top-dressing, or a ration mix.

The payoff is healthier animals and economical production, all year round!



- | | | | |
|--|--|---|---|
| <p>Bedford Farm Bureau
814-623-6194
Everett, PA 814-652-2313
New Enterprise 814-766-3328</p> | <p>H.R. Wentzel
Bridgeport, PA
717-795-1234</p> | <p>Martin's Ag Service
New Holland, PA
717-334-4996</p> | <p>Stalnaker's Farm
Liquid Feed
Weston, WV
304-269-5042</p> |
| <p>Brookland Mills
McVeytown, PA
717-899-6772</p> | <p>Heisey Farm
Service
Mt. Joy, PA
717-653-1568</p> | <p>Ron Whitmoyer
Myerstown, PA
717-933-5001</p> | <p>Susquehanna Seed
and Feed
Mifflinburg, PA
717-788-7361</p> |
| <p>Farm & Home Service
Sykesville, MD
410-795-1234</p> | <p>Johnson Liquid
Feed
Tunkhannock, PA
800-475-4492</p> | <p>Ross's Feed &
Grain
Quarryville, PA
717-788-7361</p> | <p>Tim Reinford
Newville, PA
717-776-6869</p> |
| | <p>Also Available:
Cane Molasses, Bovamax, Silo-Treat, Haylage Sweet</p> | | <p>Watson's Feed
Service
Mercer, PA
412-662-5219</p> |