

EXHIBITORS WILL HAVE THESE UNITS ON DISPLAY AT THE PA FARM SHOW
In The J-Star Booths #174-179 and 202-204 Check With Jake or Nelson for Special Prices

JAMESWAY DIRECT X PRESS SYSTEM

NEW BELT FEEDERS & CONVEYORS



**Big Capacity Delivery...
 With All The Advantages Of
 Dependable, Efficient, Low Profile
 Direct Drive Design!**

That's what farmers really appreciate about the new Jamesway family of Direct XPress Feeders and Conveyors. All models feature a dependable and efficient heavy duty industrial drive, with enclosed oil bath and standard 1, 2 or 3 HP C-faced motors. Our direct drive design eliminates pulleys, jackshafts, sprockets, chains, V belts and shields. The low profile motor and drive can be mounted on either side for added installation versatility.

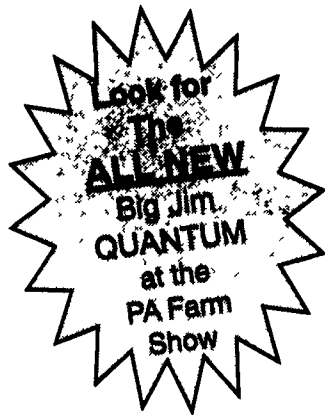
- DXC 1400 - 14" - Wide Belt Conveyor 180' Maximum Length
- DXF 1400 - Single or Divided Lot 14" - Wide Belt Feeder 180' Maximum Length
- DXC 1800 - 18" - Wide Belt Conveyor 180' Maximum Length
- DXC 2400 - 24" - Wide Belt Conveyor 124' Maximum Length

"X" Sides Are Standard
 All Direct XPress System models feature heavy 16-gauge weather resistant galvanized steel sides in 2 1/2', 5' and 10' sections. We call them "X" sides because they are "X-tra" strong and will span 20' between supports. And they are built to last and will stay looking good "X-tra" long!

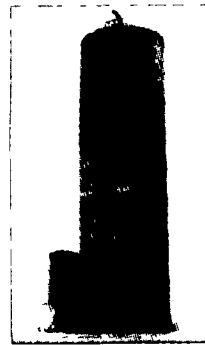
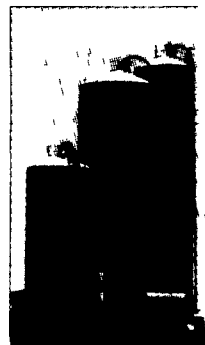
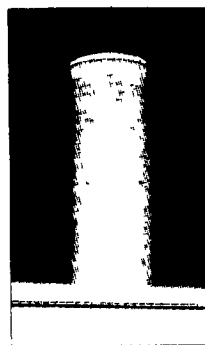
ALL NEW "Blue" CONVEYOR LINE
 Look for the... at the PA Farm Show

Big Jim[®] B.U.C.S.[™]

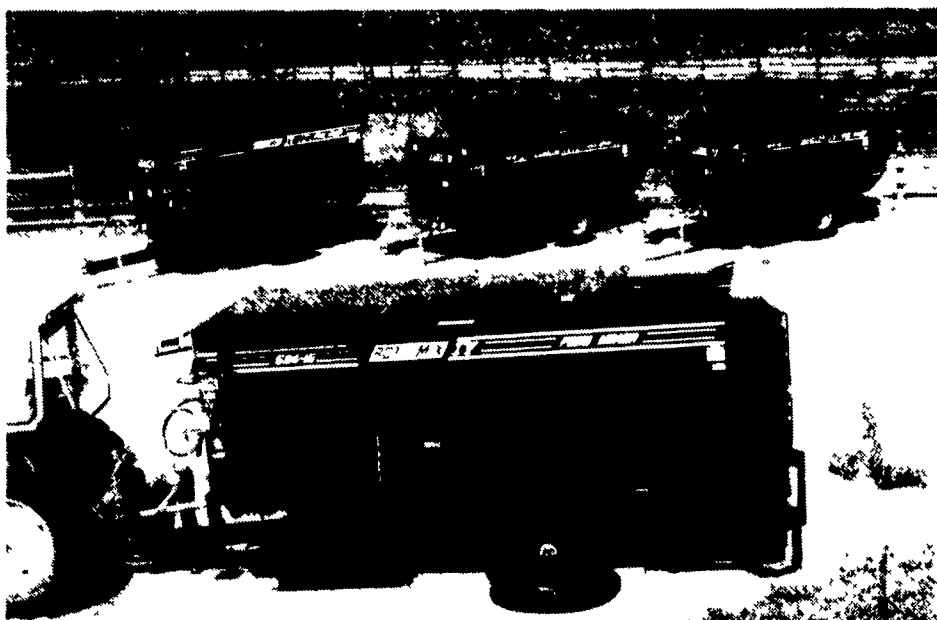
**The Solution to Bottom Unloader Problems...
 from the Silo Unloader Expert**



Your Jamesway Dealer has loads of information — including an in-depth video — about Big Jim B.U.C.S., the Bottom Unloader Conversion System by Jamesway. See how you can get faster unloading, increased capacity, better quality feed and reduced maintenance in your steel, poured concrete or concrete stave silo. You can even tour a farm with a B.U.C.S. installation at work. So call your Jamesway Dealer now and get the expert advice you need!



FEED MIXERS



YOU JUST CAN'T MATCH OUR MIX

TMR Ruffage Master

These new Oswalt[®] four auger Model 200/250 mixers are designed to process and mix all feeds, including baled hay, into a fully-blended TMR **better than anyone!** The aggressive, notched, 20" diameter, full-pitch, four auger mixing pattern, dual shear shelf design



and exclusive, self-lubricating Tuff-Glide[®] liners help feed materials flow more freely, reducing horsepower requirements and virtually eliminating material hang-ups and dead spots. The end result: A better quality of mix! See your Oswalt Dealer today!



The ROTO-MIX professionals know that quality feed means increased consumption, therefore, higher production levels. With ROTO-MIX IV you reduce fines, minimize shrinkage, and eliminate dead spots. The gentle tumbling action mixes fragile flaked and high-moisture ingredients without grinding, resulting in a fluffier, more nutritional ration.

Nothing robs a ration of nutritional value more than fines. Conventional auger mixers use pressure to move the feed through the mixing chamber, thus crushing the feed and creating fines. But the ROTO-MIX patented mixing system uses a rotor to gently lift the feed past the wedging point of the lower side auger, keeping fines to a minimum and reducing nutritional loss.

Even the most nutritious ration is effective only if the cattle eat the complete ration. Improperly mixed feed allows the cattle to "nose out" what they don't want, disrupting the balance of nutrients. But the ROTO-MIX end-to-end...side-to-side mixing system provides the most thorough TMR available, ensuring that your cattle will consume a balanced ration of nutrients in every pound of feed they eat.

**Check all the ROTO-MIX advantages...
 the bottom line is what counts.**



LAPP'S BARN EQUIPMENT

5935 Old Philadelphia Pike, Gap, PA 17527
 PHONE: 717-442-8134
 — Radio Dispatched Trucks —

