

Public Auction Register

Closing Date Monday 5:00 P.M.
of each week's publication

JANUARY

FRI. JAN. 10 - 9AM Farm Equipment, Tractors & Farm Supplies. Located at 100 W. Jackson St., New Holland, PA 17557. A & C Diffenbach Auction Inc.

FRI. JAN. 10 - 10AM 90 Head Purebred Holstein Cows & Heifers, 70% Home Raised. Sales to be Held at 1500 Beaver Dam Road. 3 Mi. South of Honey Brook 1 Mi. of Route 10. Terms by: Sallie Ann Kauffman. Snyder Auction Service.

FRI. JAN. 10 - 10AM Complete Farm Dispersal. Stevensville, Bradford Co., PA. At the Farm on "Spring Hill" - Stevensville Road - From Stevensville and Rt. 706 Go South Across Bridge

Turn Right First Farm - Approx. 1 Mi. or Less Off Rt. 706 - Stevensville is 8 Mi. NE of Wyalusing, PA and Approx 20 Mi. West of Montrose, PA. Owner: Gerard Martin. Howard Visscher Auctioneer.

FRI. JAN. 10 - 12 NOON Dairy Sale. Rt. 522 3 Mi. East of Middleburg, PA., 5 Mi. West of Sellingsgrove, PA. Middleburg Livestock Auction Sales, Inc.

FRI. JAN. 10 - 1:30PM State Graded Feeder Pig Sale. Carlisle Livestock Market, Inc. (717)249-4511.

FRI. JAN. 10 - 6:30PM Mystic Hill Bull Sale. Culppeper Ag Enterprises, Culppeper, VA. Virginia Angus Association.

FRI. JAN. 10 - 7PM Gun Auction. Location: App. 40 Mi. North of Harrisburg, PA, Along Rt. 25, Midway Between Gratz & Berksburg at Crossroads Sale & Market. Estate of Andrew C. Long w/Additions. Lee Dockey Auctioneer.

SAT. JAN. 11 - 8:30AM Absolute Auction of Private John Deere Collection From Delaware w/Additional Consignments. Location: Winterstown Fire Hall, Borough of Winterstown, Southern York Co., PA. Approx. 3 1/2 Mi. South of Red Lion, PA. Along Rt. 24. Agent for Owners. Russell Wright & Ralph Breneman Aucis.

SAT. JAN. 11 - 9AM Paintings, Furniture, Antiques, Etc. At: 3013 E. Market St., York, PA. Springettsbury Fire Co. Social Hall. Sold for the Robert C. Karsten Estate & Others. Gilbert & Gilbert Auctioneers.

SAT. JAN. 11 - 9AM Furniture, Antiques, Coca Cola Memorabilia Collection, Tractors, Farm Machinery, Vehicles. Cochran Auction Complex, 7704 Mapleville Road, Boonsboro, Washington Co., Maryland. Estate of Francis Champ Snively, Several Small Estates, Remaining Inventory of H.A. Weiss, Vehicles Donated to the Frederick County and Washington County Chapters of the American Red Cross and Others. Cochran Auctioneers.

SAT. JAN. 11 - 9AM Antiques, Household Goods, Toys & Tools. Sale to be Held at the Horst Auction Center Located at the Corner of Rt. 322 and Durlach Road (Approx. 2 1/2 Mi. West of Ephrata) Ephrata, Lancaster County, PA. Sale for: Robert W. Trimble Estate & Donald McGarvey. Horst Auctioneers.

SAT. JAN. 11 - 9AM Antiques, Household Goods, Oak Furniture, Toys, Child's Hay Wagon, High-Wheel Child's Tricycle, Fine One-Horse Sleigh, Tools. Loc: 224 South Church St., Quarryville, Lancaster Co., PA (Dir. At Corner at South Church St. & 4th St.) Sale by: Michael Louver. Howard E. Shaub, Inc. Auctioneer.

SAT. JAN. 11 - 9:15AM Victorian Furniture, Oak Pcs, Antiques, Household, Collectibles, Good Smalls. 93 Texaco Rd, Mechanicsburg, PA. Midway Between Mechanicsburg & Rt. 11, On Rt. 114 Turn onto Texaco Rd., 1 Mi. to Auction A.S. Frey Estate. Chuck Brcker, Auctioneer

SAT. JAN. 11 - 10AM Auto and Tools Auction. 231 Landing St., Vincentown, NJ. Allen's Auction Service. Rick Allen Auctioneer.

SAT. JAN. 11 - 10AM Complete Liquidation of Hbg. Machine & Welding Co. Located at Corner of 18th & Chestnut Sts., Hbg., PA. Behing Hajoca Supply Kerry Pae Auctioneers.

SAT. JAN. 11 - 10AM Toy Train Auction, Pre-War Lionel, Marx & American Flyer, Items for Restoration. Ridge Fire Company Pavilion, Along Rt. 23, Between Phoenixville, PA and Rt. 100. Ted Maurer Auctioneer.

SAT. JAN. 11 - 1PM 2.9 Acre Farmette. Loc: 528 So. Distillery Rd. Newmanstown, PA. Take Rt. 501 North of Brickerville App. 4 Mi. Turn Left on Distillery Rd. Approx. 3/4 Mi. Or From Shafferstown Take Rt. 501 South App. 3 Mi. Elco School Dis-

trict. Michael and Jane Musser. Kreider, Kline & Good Aucis.

SAT. JAN. 11 - 2PM On the Premises Known As 733 Owl Hill Road, Litz, Warwick twp. Lanc. Co., PA. Auction by: Rick and Dana Bixler. John Harvey Fry Auctioneer.

JAN. 11-16 - 97 PA Farm Show Collector Models. At Farm Show Complex, Harrisburg, PA.

MON. JAN. 13 - 5:30PM Valuable Screen Printing Equipment, Office Equipment, Shelving, Tools. Murry Auction Emporium, 23 N. Water St., Litz, PA 17543. E. M. Murry Associates Auctioneers.

TUES. JAN. 14 & WED JAN. 15 - 10AM Building Supply Center, Trucks, Forklifts, Machinery, Bldg. Materials, Tools, Hardware. Black Horse Pike & Clements Bridge Rd. (Rte. 168 & 411) Runnemede, NJ. Runnemede Building Supply Co. Wm. F. Comly & Son, Inc.

TUES. JAN. 14 - 10AM Restaurant Equipment. At: 55 N. Main Street, Red Lion, PA. Owner: Kluckers. Gilbert & Gilbert Auctioneers.

TUES. JAN. 14 - 4PM Furniture, Glassware & Etc. Griest's Auction & Flea Market. Rt. 10, 2 Mi. S. Of Parkesburg - 3 Mi. N. of Rt. 41 Ken Griest Auctioneer.

TUES. JAN. 14 - 5:30PM Antiques, Furniture, and Small Items. Tressler Auction, Rt. 64, Between Mill Hall & I-80 Lamar, PA. Will Hold An Auction for George Seybolt. Bill Tressler Auctioneer.

WED. 15 & THURS. JAN. 16 - 8:30AM Farm Equipment. At Our Place of Business Located 6 Mi. South of Chambersburg, PA 1 Mi. E. of Manon, Just E. Off 181 at Manon (Exit 4) Along Rt. 914. Manon Auction Service.

WED. JAN. 15 - 2PM Antiques, Household Goods, Toys & Tools. Sale to be Held at the Horst Auction Center Located at the Corner of Rt. 322 and Durlach Road (Approx. 2 1/2 Mi. West of Ephrata) Ephrata, Lancaster County, PA. Sale for: Beatrice Erb & Black Rock Retreat. Horst Auctioneers.

WED. JAN. 15 - 5:30PM Furniture, Household, Antiques, 100's Smalls. 93 Texaco Rd., Mechanicsburg, PA. Midway Between Mechanicsburg & Rt. 11, on Rt. 114 Turn onto Texaco Rd., 1 Mi. to Auction. Chuck Brcker, Auctioneer.

WED. JAN. 15 - 7:15PM Dairy Sale. Hagerstown, MD. Four States Livestock Sales.

THURS. JAN. 16 - 9AM Horses & Farm Equipment, 391 Christiana Pike, Christiana, PA 17509. Sale by: Benuel & Rachel King. Mel Hoover Auct.

THURS. JAN. 16 - 10AM Antiques, Household Goods, Hubley Articles, Toys, Dolls, Post Cards, Baseball & Football Cards, Brass, Iron & Tinware, Tools, 6HP Snapper Riding Mower. Sale to be Held at Al Starr Firemen's Building, Village of Willow Street, Lanc. Co., PA (South of Lancaster, Along Rt. 272, Behind Firehall) Sale by: Mary K. Chidester & Fred & Gerri Woerner. Howard E. Shaub, Inc. Auctioneer.

THURS. JAN. 16 - 10AM Machine Tools & Fabrication Equipment 901 Richland Ave., York, PA. Radco Manufacturing, Inc. Michael Fox Auctioneers, Inc.

THURS. JAN. 16 - 7PM Real Estate Auction. 141 South Prince St., Lancaster City. Sale for: Spanish American Civic Association. Claude Bechtold Auctioneers

FRI. JAN. 17 - 10AM 7 Head Top Mules, Full Line Farm Machinery, Hay, Straw. Sale to be Held at 1500 Beaver Dam Road. 3 Mi. South of Honey Brook 1 Mi. Off Rt. 10. Terms by Sallie Ann Kauffman. Snyder Auction Service.

FRI. JAN. 17 - 11AM 82 Holstein Cattle, Machinery. Directions: Farm Located on Rt. 369, North Fenton, NY. From Binghamton, Take I-88 West 7 Mi. to Exit 3 (Port Crane), Take Rt. 369 North 5 1/2 Mi. to Farm. From Chenango Forks, Take Rt. 12 to Rt. 79 East, Proceed 2 1/2 Mi. to Rt. 369, Go 1/4 Mi. to Farm. Watch for Arrows. Owner: Robert Thompson. Mel & Matt Manasse Auctioneers.

FRI. JAN. 17 - 11AM 82 Holstein Cattle, Machinery. Directions: Farm Located on Rt. 369, North Fenton, NY. From Binghamton, Take I-88 West 7 Mi. to Exit 3 (Port Crane), Take Rt. 369 North 5 1/2 Mi. to Farm. From Chenango Forks, Take Rt. 12 to Rt. 79 East, Proceed 2 1/2 Mi. to Rt. 369, Go 1/4 Mi. to Farm. Watch for Arrows. Owner: Robert Thompson. Mel & Matt Manasse Auctioneers.

SAT. JAN. 18 - 9AM Tractors, Trucks, Forklifts, Planting and Tillage Equipment,

Orchard and Packing Equipment and Shop Equipment. Location: Fifer Farms Peachtree Run, When Traveling on US 13 Turn East at Canterbury Red Light (Insh Hill Road) Go to Four Way Stop Cross Over, Go to 1st Road to Left (Peach Tree Run) 1st Farm on Right Approximately 2 Mi. from Light. When Traveling on 113A turn West onto Insh Hill Road at the Red Light in Magnolia go Approx. 3 Mi. Turn Right on Peach Tree Run 1st Farm on Right. Signs Posted. Owners: Fifer Farms, Sam Walters III Auctioneer.

SAT. JAN. 18 - 9:15AM Victorian Pcs, Mahogany, Oak, Modern Furniture, Collectibles, Glass, China, Griswold. 93 Texaco Rd., Mechanicsburg, PA. Midway Between Mechanicsburg & Rt. 11, On Rt. 114 Turn onto Texaco Rd., 1 Mi. to Auction. David Cone Estate. Chuck Brcker Auctioneer.

SAT. JAN. 18 - 10AM Restaurant Equipment Auction. Located Off Rt. 220, North of Elmira Street, Sayre, PA. In Bradford County. Owners: Ken & Vi Bartholomew. Tim & Roger Spencer Auctioneers.

SAT. JAN. 18 - 10:30AM Farm Equipment. Location: 5040 Landing Neck Rd., Easton, MD., From Easton, MD. Follow Rt. 50 East to Landing Neck Rd., Turn left and Go 3 1/2 Mi. to Farm on the Right (Signs Posted). Owner: Kenneth & Pat Harden. A. Curtis Andrew Auction, Inc.

SAT. JAN. 18 - 11AM JD Tractors, Clean 7700 Truck, Implements. Clark Canning House Rd., Federalburg, Maryland. Federalburg is Located on Delmarva Peninsula Between Easton, MD and Bridgeville, DE From Baltimore: Take US Rt. 50 to Easton, MD in Easton, MD Turn Left on Rt. 331 & 318 West 17 Mi to Federalburg. Turn Right on Rt. 307. Go 1-2/10 Mi. Turn Left on Clark Canning House Rd Go 6/10 Mi. to Auction on Left. From Dover & North: Take US Rt 13 South to Bndgeville, DE Turn Left on Rt. 18 Which Becomes Rt. 318 At South of Bndgeville, DE. Turn Left on Rt 18 Which Becomes Rt. 318 at Maryland Line. Turn Left at Blinking Light on Rt. 307. Go 1-2/10 Mi. and Turn Left on Clark Canning House Rd. Go 6/10 Mi. to Sale on Left. Laurence Edwards. Pete Richardson Auction Sales & Service, Inc.

SAT. JAN. 18 - 12NOON Tack, 2PM Horses. At Lebanon Valley Livestock Auction, 1 Mi. East of Fredericksburg, PA on Rt. 22. Lebanon Valley Livestock.

SAT. JAN. 18 - 1PM Val. Ranch Home Along Rt. 118 1 Mi. E. of Hughesville, PA. Owner: Gwen Baer. Fraley Auction Co.

SUN. JAN. 19 - 9AM - 2PM Toy Show, Leesport Farmers Market Social Hall, Rte. 61 Leesport, PA.

MON. JAN. 20 - NY Convention ET Sale. Saratoga, NY The Cattle Exchange.

MON. JAN. 20 - 9AM 4 Nice Older Model Collectible Automobiles, Post Office From Litz Square, Furniture, Rugs, Pottery and a Full Line of Collectibles. Located at Murry Auction Emporium, 23 N. Water Street, Litz, PA E.M. Murry Associates Auctioneers

TUES. JAN. 21 - Fed Cattle Sale. Carlisle Livestock Market, Inc. (717)249-4511.

TUES. JAN. 21 - 9AM Quilt, Craft & Buggies. Located at 100 W. Jackson St., New Holland, PA 17557. A & C Diffenbach Auction Inc

TUES. JAN. 21 - 12NOON Real Estate. At: 1059 W. Market St., York, PA. T.D.B.A. Chet Patterson & Sons. Trustee Lawrence V. Young. Gilbert & Gilbert Auctioneers.

WED. JAN. 22 - Farm Equipment, Household Goods & Horses. 566 Mountain Road, Elizabethville, PA 17023. Dauphin Co. Terms by: Jacob & Ella Ebersole. Mel Hoover Auctioneer.

WED. JAN. 22 - 9AM Consignment Sale. Farm Equipment, Tractors, Trucks, Truck Lots. Located at Good's Auction, 111 N. Maple Ave., Leola, PA. Wolgemuth's Auction Service.

WED. JAN. 22 - 9AM Quilt & Craft. Located at 100 W. Jackson St., New Holland, PA 17557. A & C Diffenbach Auction Inc.

View of unusual, valuable items - Lancaster, Friday, January 10, 1997-E29

WED. JAN. 22 - 11AM Real Estate. 10.54 Acre Farmette/Contains 1800's Large Stone Farm House, Bank Barn, Machinery, Building, Spring House. Location: 172-B Farview Road, Glenmore, PA., Chester County From the Downingtown Exit of the PA Turnpike (76) Take Rt. 100 North to Rt. 401. go West on Rt. 401 For Approx. 1.5 Mi. and Turn Left onto Fairview Road, Continue for Approx. 1/4 Mi., Farm is First Farm on the Right. Owner: United States Government Farm Service Agency. Kings Auction Inc.

WED. JAN. 22 - 2PM Antiques, Household Goods, Good Construction Tools. Sale to be Held at the Horst Auction Center Located at the Corner of Rt. 322 and Durlach Road (Approx. 2 1/2 Mi. West of Ephrata) Ephrata, Lancaster Co., PA. Sale for: Arline F. Hoffman Estate & Abner L. King. T. Glenn Horst Auctioneers.

WED. JAN. 22 - 4PM Real Estate - 9.09 Acre Farmette/Contains Two Dwellings. Location: 1991 California Road, Springfield Township, Bucks County, PA. Take 212 North From Richlandtown to Wreccics Road. Turn Left onto Wreccics Road, Go Approx. 1 mi and Turn Left onto California Road. The Property is Located Approx. 1/2 Mi on Left. Owner: United States Government Farm Service Agency. Kings Auction, Inc.

THURS. JAN. 23 - 9AM Nice Furniture, Household Goods, Glassware & China, Tools. Sale to be Held at Al Starr Firemen's Building, Village of Willow Street, Lancaster Co., PA. (South of Lancaster, Along Rt. 272, Behind Firehall) Sale by: Mr. & Mrs. F. Donald Keil & Mr. & Mrs. Francis E. Holbrook Howard E. Shaub Inc Auctioneer.

THURS. JAN. 23 - 10:30AM Norlo Milking Herd & Close Bred Heifers. Loc. Fayetteville, PA. Owners: Lane & Judy Sollenberger. Dale L. Hoover, Sale Mgr. Kline, Kreider & Good Aucis.

FRI. JAN. 24 - 9AM Northern Virginia Contractors Auction, Haymarket, VA. Directions: At Annandale Mill Works From Frederick, MD, Follow Rt. 15 South. Sale is Right Below the Jct. of Rt. 55 & 15 (By Sheetz Store). Wolfe Industrial Auctions, Inc.

FRI. JAN. 24 - 9AM Dairy Cows, Horses, Farm Equipment. 335 Bel Rd. Christiana, PA 17509. Sale by: Elam K. & Susie S. Riehl. Mel Hoover Auct.

FRI. JAN. 24 - 10AM Machinery & Equipment. Location: Mt. Pleasant, Berks County, PA - Approx. 6 Mi. North of Reading Airport, Just Off Rt. 183. Precision Pattern and Machining Inc. E.M. Murry Associates Auctioneers.

FRI. JAN. 24 - 10AM Horses & Mules. New Holland Sales Stables, Inc. 101 W. Fulton St., New Holland, Pa.

SAT. JAN. 24 - 1:30PM State Graded Feeder Pig Sale. Carlisle Livestock Market, Inc. (717)249-4511

SAT. JAN. 25 - Real Estate & Personal Property. Loc: 18 Terrace Ave., Stevens. Rt. 272 North, Turn Right on Church St. at Denver/Ream-

stown Light. Turn Left on Summers Dr., Left on Terrace, House on Left. Terms: Leo & Theresa George Kline, Kreider, & Good Aucis.

SAT. JAN. 25 - 8:30AM Furniture, Antiques, Guns, Gold & Silver Coins, Fostoria, Personal Property. Location: Brickerville Fire Hall, Brickerville, PA. Located 7 Mi West of Ephrata Off Rt. 322. From Litz Follow Rte. 501 North to Brickerville Turn Right onto Rt. 322 to 1st Road Left to Fire Hall on Left Auction for Lyle C. & Eleanor E. Sherk. John D. Stauffer Auctioneer

SAT. JAN. 25 - 8:30AM Tack, 11AM Horses. Rt. 522 3 Mi East of Middleburg, PA., 5 Mi. West of Sellingsgrove, PA. Middleburg Livestock Sales, Inc.

SAT. JAN. 25 - 9AM Forklifts, Woodworking Equipment & Household Goods. Directions: 501 South of Myerstown to Stoever Ave., Left to Railroad St. Right to Sale on Right or 501 North of Reistville Through Railroad Underpass to 1st Rd. right (Stoever Ave.) to 1st Rd Right (Railroad St.) to Sale on Right. Terms by: David S. King, 873 South Railroad Street, Myerstown, PA Mel Hoover Auctioneer.

SAT. JAN. 25 - 9AM 2 1/2 Story Double Brick Dwelling, 28'X57' Brick 2 Story Shop, Planing Mill Equip., Shop, Power and Hand Tools Located at 734 & 736 South State Street, Ephrata, Lancaster Co., PA. Terms by Irene R. Kramer & Henry P. Kramer & Ronald L. Kramer T. Glenn Horst Auctioneers

SAT JAN 25 - 10AM Ephemera, Paper Collectibles, Movie & Other Old Posters, Stocks, Local Collectibles & Advertising Signs. Located At: Gap Fire Hall, Pequea Ave., Gap, PA. From Rts. 30 & 41 in Gap Take Rt. 30 West to Pequea Ave (First Left) Turn Left to Fire Hall on Right. 15 Mi East of Lancaster - 10 Mi West of Coatesville - Watch for Signs Barr/Davis Auctioneers Agents for Owner Barr Davis Auctioneers.

SAT. JAN. 25 - 10AM Commercial Real Estate & Restaurant Equipment 143 Water Street, Elkton, MD J-R's Dairy Treats Iron Hill Auction.

SAT. JAN. 25 - 10:30AM Antique Tool Auction. Holiday Inn (West), Rt. 30 & Rt. 74, 2000 Loucks Rd. (Behind Mall) York, PA. Barry Hurchalla, Auctioneer.

SAT. JAN. 25 - 11AM Farm Dispersal 68 Head Dairy Cattle and Machinery. Watkins Glen (Schuyler Co.) New York. Dick & Irene Richtmyer. Pirunco Auctioneers, Inc.

SAT. JAN. 25 - 12NOON Real Estate. Located in Perry Township, Snyder County, PA. Travel 35 Mi. North of Harrisburg on Rts. 11 & 15. Turn Left onto Rt. 104 North & Travel 2 1/2 Mi. Make Left onto Oriental Rd., Travel 1 Mi. & Make Right onto Oriental Softball Field Rd. Travel 1/2 Mi., Make Right & Auction is to be Held at First Place on Left Watch for Auction Signs Day of Auction Owners David S & Mary Horst Roger A. Lauver & Dean E. Lonquacre Auctioneers.

AUCTION

GRIEST'S AUCTION & FLEA MARKET
RT. 10, 2 MI. S. OF PARKESBURG - 3 MI. N. OF RT. 41
TUES., JAN. 14, 1997
4:00 PM

FURNITURE, GLASSWARE & ETC.
COMMERCIAL OFFICE EQUIPMENT
4 Large Desks (6'X3" With Glass Tops); 7 Bookshelves 32' Wide X 84" Tall w/Adjustable Shelves; 3 Sm. Bookshelves 36" X 36" w/Adjustable Shelves; (Wooden) 6 Drawer File Cabinet; Computers; Adding Machines
NOTE: All wooden furnishings handmade.

NOTE: PARTIAL LISTING

Griest Auction Service
Kenneth Griest
Lic. #AU-001270-L
Phone: (610) 857-2149



NOTICE

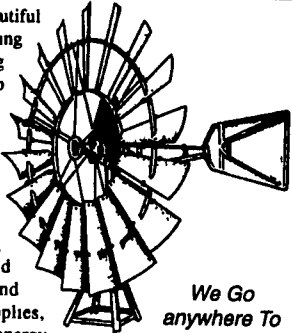
Rent: 47a dairy farm in northern Dauphin Co., 39 stanchions, pits, 3 br house. Sam Kinsinger, Gordonville PA 17529. Lanc. Co. 717-768-8086.

Horse boarding, exc full care, many trails, next to Spring Valley, can haul, reasonable, new fences. Rottweiler pups. Felton PA. 717-244-9381.

Babbitt for pouring bearings #3 per lb, 200 lbs available. Call after 6 p.m. Salem Co. 609-769-3717. Plan for your special spring party on the Susquehanna River, ride the Pride of the Susquehanna, real paddle-wheeling. Dauphin Co. 717-234-6500.

The wrong coat was taken at Faith Mennonite High School's Christmas concert, ladies maroon and green size large. Lanc. Co. 717-733-1152.

Nothing is more beautiful than a water pumping windmill supplying fresh water for livestock, drip irrigation, to keep ponds full or just to look good, send \$2.00 (Refundable) for our complete catalog which contains Aerometer, Dempster, Flasa and monitor water pumping windmills, whisper wind generators, tower, hand and windmill pumps, well supplies, ram pumps, windmill and energy books and more



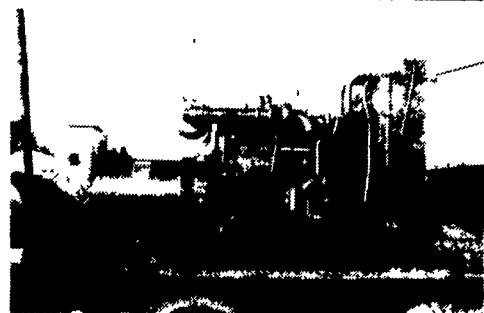
We Go anywhere To Install Our Windmills

O'BROCK

WINDMILLS • (216) 584-4681

9435 12TH ST., DEPT. LF • NORTH BENTON, OH 44449

MARTIN MACHINERY



GENERATORS

Sales ★ Service ★ Rentals
* Complete Generator Systems
* PTO * Portables * 2-1600 KW
"We Service It If You Have It And Sell It If You Need It"

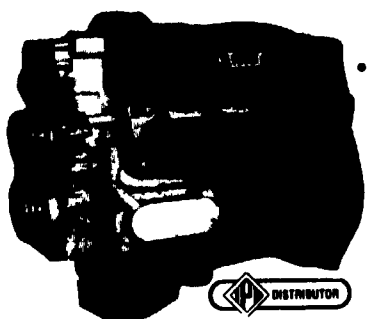
34 W. Mohler Church Rd.
Ephrata, PA 17522

Tel: 717-738-0300
Fax: 717-738-4329

RECON ENGINES

DIESEL PERFORMANCE SPECIALISTS
(717) 354-4801

Specializing In
Used Rebuilt And Exchange
3208 Caterpillar Engines



SALES
* **SERVICE**
* **PARTS**

DIESEL POWER SUPPLY

DIESEL ENGINES - POWER UNITS
415 PETERS RD. GORDONVILLE, PA 17529

Misc. New-Used And Trade-In
Diesel Engines

SPECIALIZING IN B&C SERIES