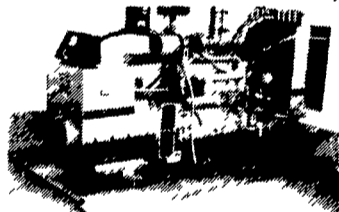


FOR SALE
34 PM MONT HOG
NEW ROTOR
FOR 34 PM
CALL
717-438-3354

For Sale
GEN SET
3406 - 225 KW
Caterpillar
 R.L. Manson in Harrisburg, Pa.
Call 717-939-9588.

For Sale
GEN SET
3408 - 330 KW
Caterpillar
 Hardy Sawmill at Roxbury.
 Can be seen running.
Call 717-532-5344.
 If no answer leave message.

POWER SYSTEMS ELECTRIC, INC.



SPECIALIZING IN GENERATOR SALES, SERVICE AND RENTALS
(717) 933-5617 (800) 875-6964

- (1) 175 KW Volvo Diesel, Used;
- (1) 35 KW Chrysler L-p-g;
- (1) 15 KW Onan, L-p-g;
- New PTO Generators In Stock
- New & Used Transfer Switches**

33 RECREATIONAL VEHICLES



84 CHEVY BEAUVILLE VAN
 6.2L Detroit Diesel, New paint.
 No rust. New trans. Many new parts. 4.1 OR 23 mpg
 Excellent Condition.
814-632-8609

32a ANTIQUES

1966 Volvo wagon, garage kept last 10 yrs, ex. shape, \$1500/obo. (412)668-7149
 Visible Globe gas pump, Tokaum pump, needs restoration, \$750 609/965-7468.

33 RECREATIONAL VEHICLES

'87 Honda 250X, has reverse, hardly used, very clean, call for details, \$2100. 410-893-2405.

34 AUTOS

CHEVY'S, FORD'S, etc Cars and trucks. Over 300 vehicles Every Monday 6:30PM. PUBLIC AND DEALERS. YORK SPRINGS PUBLIC AUTO AUCTION, RT 15, York Springs, PA 1-800-222-2038.

See Our Ad In Today's Auction Section
 Over 1000 Vehicles Auctioned Weekly

AUTO BUYERS

Don't buy without this insider consumer report
 Learn the tricks of the trade that can cost you big bucks
ORDER TODAY!

Guaranteed.
 Send \$5 00 + \$1 50 S&H
 To Consumer Research Svc.
 529 Nancy Street
 Suite B
 Charleston, WV 25311

35 TRUCKS & TRAILERS

10' stake bed w/tool boxes & ladder rack, complete w/ lights & bumper, red, excellent condition, \$675. 717-733-2873

12 Morse Livestock Trailer, 40' aluminum, 75 Diamond Rio, 290 Cummins, 13spd, PS, AC, \$12,000 OBO. Will trade Howard (410)489-9196.

1963 Ford F600, 27,000 orig miles, ex cond (717)633-1170

1963 Ford fire truck, gas engine, 750 GPM pump, 750 gallon water tank, in working order, asking \$7,000 OBO. Evenings, (717) 865-3346, (717)273-6309.

1966 Ford cabover, 370 gas engine, 5 speed trans, 2 speed Eaton rear, 26,000# GVWR, air brakes, \$1400 215-257-2871

1967 Mack R model, 33,000 GVW, w/1982 9 ton Eager-Beaver trailer, both excellent shape, MUST SELL! \$11,900 (610)584-2772.

1970 C70 Chevy tandem axle 432, V-6 gas, 8 speed road ranger with PTO motor and transmission, excellent condition, \$3,000. (410)239-8234.

1970 IH single axle tractor w/wetline 549-10 spd RR, good cond, \$1500; 76 IH school bus cut down to haul round bales, V-8, 5 spd, 2 spd rear, \$300; 73 40' Ravens spread axle flatbed w/side kit, good cond, no cracks in frame, \$4900; Rockwell 411 air ride axle, 20" Dayton wheels, \$900. Lebanon Co. (717)272-9595

1971 F750 Ford Dump Truck, 391 gas, 26,000 GVW, no CDL required, new paint, \$4500. neg. 717/834-6362.

1974 Chevy Cheyenne, 1/2 ton, V-8, AT, good farm truck, \$500. (301)898-7426.

1975 GMC 16' flatbed, single axle, 26,000 GVW, excellent shape. 717-398-2304.

1976 Ford F-350 dump, removable chip dump box, 460 4spd, \$6,000; 1978 F-150 4X4, 351, auto, class III hitch, cap, \$2000; 1970 Jeep J-4000 4X4, 4spd, Meyers plow, manual angle, 7', extra plow parts included. Lebanon Co. (717)865-3025

1976 International tri-axle dump truck w/400 Cummins diesel, 13 speed Roadranger, 18' aluminum body, PS, AB, good condition, Reduced to \$13,000. (609)894-4363.

1976 Loads 35-ton low boy; 1977 K Cat loader; (2) 1989 Peterbilt trucks, \$27,000/ea, 1988 Peterbilt, \$22,000 All w/400 Cummins, 8 speed trans., air ride extension; 1981 Mack R Model tractor, 300, AC, Power steering, 6sp, air shift, \$6500; 1977 K track loader, fair condition; Drop deck, 35-ton lowboy. 610-286-5172.

1977 IH 2070A tandem, w/PT 270/13-spd, 18,000 fronts, 44 rears, on 11'00/20 rubber, w/Jake brake, asking \$4500. 908/362-9192 evenings.

1978 Chevy step van, 20 six cyl, standard, good condition, \$2500 offer. Wash. Co., MD. 301-842-3056 or 301-842-2685.

1978 IH 1800 dump, 10' box, 35K GVW, ABPS, gas, 5+2, 47K miles, power angle plow, cinder spreader good solid unit. 717-435-0524.

1978 IH S series truck tractor, 290 Cummins, big cam, 10 speed, new drums and lining, good condition, \$3000 OBO 717-653-9175



1985 Mack, E9-450 Mack Engine, 12 sp. Mack trans. 58,000 lb. Mack rears. 18,000 lb. steering axle. Equipped with 4700 gal. pres./vac. tank, 8" load and unload valves, 350 CFM Walley Vac./press. pump powered with F3L-1011 Deutz, 4 shank Sunflower sub-soiler injector system.

\$49,500

Lanc. Co. Pa.

717-733-8528



1992 W4 GMC Diesel, 14,250 GVW - 15 ft Van (LIKE NEW)



(2) 1989 Int 1954 DT466, 6 speed, 33,000 GVW, A/B - P/S, 150" C-A, very clean, low miles



1984 GMC Brigader - S/A Tractor - 240 Cummins - 7 speed - 32,900 GVW - 84" C to A



16 Ft x 18 Ft REEFER bodies - Cold Plate - 220 Single Phase Units \$800.00 and - Folding Liftgates \$250 00

Martin's Used Trucks & Equipment Inc.

560 Lampeter Rd. Lancaster, Pennsylvania 17602
(717) 299-6200 (717) 392-6266

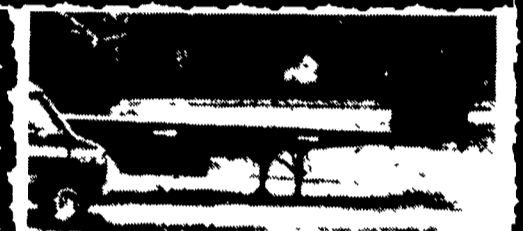
FEED TRUCK



4070 IH Diesel w/ 18 ton E.M.M. feed tank body & blower complete. Runs & works \$5,000 717/382-4878



International Truck with new Manure Spreader Tank, Front Motor Driven Hydraulics, Not PTO Curry Supply Co., Curryville, Pa. 1-800-345-2829



1981 48' Fruehauf Flat Bed Trailer 11.225 tires. Fair shape \$3,500 OBO

Also 1987 Chevy Customized van Hightop, Dual Air, New Tires. 80,000 original miles. Good Shape \$5,500 OBO (717) 436-8684

Mack R. Mo., 1979, 300, 5sp, 3:87 rears, 38,000# Camelback, AC, PS, dynatard engine brake, 22.5 spokes, Radials 50% tread, no caps, air slide 5th wheel, recent new clutch, 225,000 on out of frame overhaul, new inspection, maintenance records available. Truck is working every day. Must sell, need sleeper...\$5,900 Neg.

Wet Line Available

Flat Bed, brown, 1976, 35', radials, 22.5 spokes,.....\$1,100

ALL VEHICLES PA STATE INSPECTED

717/362-8117 Days 717/362-3678 Eves & Weekends



1975 GMC "Big Wheels" Tanker
 4-53 Detroit, Allison auto, P.S. steel tank, front tires 48x2500-20 NHS, Back tires 66x4300-25 NHS. Air brakes 28,000 GVW

Also have a '77 GMC "Big Wheels" with a 6V-71 engine apart. has a stainless tank

(610) 269-1298