

Hatfield Direct

Hatfield, Pa.
Reports Supplied by Packer
For Monday, December 23, 1996
And Wednesday, December 25, 1996
MONDAY: 7595
LAST MONDAY 6815
TREND: COMPARED TO LAST
MONDAY .25 LOWER.
55.5%-56.4% 216-269 LBS. BASE
54.83.
56.5%-58.4% 216-269 LBS.
55.68-56.53.
58.5%-60.4% 216-269 LBS.
57.37-58.22.
FEW 216-269 LBS. 59.06.
GOOD'S RECEIVING
MONDAY CASH: 55.00.

Indiana Hogs

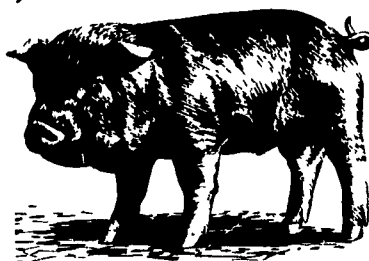
SPRINGFIELD, IL
DECEMBER 24, 1996
Monday actuals 28,900 Week to date
55,900 Today's estimate 27,000 Same pd
week ago 71,600 Wednesday week ago
36,600 Same pd year ago 42,200 Wednes-
day year ago 42,200 Barrows and Gilts:
Mostly Steady. Demand and supplies were
light to moderate with some interest out of
the market. Country: Plants: US 1-2
230-260 lbs. 51.50-53.00, Few 51.00 &
53.50 52.50-54.00 2-3 220-260 lbs.
45.00-51.00 Few 52.25 210-230 lbs.
40.00-45.00 Sows: Near Steady. US 1-3
300-450 lbs. 40.00-45.50 Few 39.00
450-500 lbs. 44.50-46.00 500-650 lbs.
47.00-50.50 Few over 650 lbs. 51.00
Boars: 37.00-38.00 Eastern Cornbelt
Direct Hog Trade Hot Carcass Value Infor-
mation Trend: Unevenly .68 Lower to .50
Higher Estimated receipts: 15,700 as of
11:00 am Lean Value Evaluation Sum-
mary: % Lean 43-44 45-46 47-48 49-50
51-52 53-54 55-56 Lean Value * Carcass
wt* 63.39 * 67.50 * 69.09 * 70.50 * 71.91
* 73.00 * 74.00 * 170-191# * 69.09 *
70.75 * 72.65 * 74.01 * 75.67 * 78.53 *
80.52 * Backfat: * 10th rib <1.39 * <1.24 *
<1.14 * <.99 * <.89 * <.74 * <.59 * Last
rib <1.40 * <1.29 * <1.19 * <1.09 * <.99 *
<.79 * <.59 * SB 49.00-52.25 SG
51.00-53.50 SL 45.00-50.50 SZ
48.00-51.00 SC 52.25-54.00 SH
50.00-52.50 SW 39.00-45.50 TA
37.00-38.00 SD 51.25-53.00 SJ
40.00-45.00 SX 41.00-46.00 SF
45.00-51.00 SK 45.00-51.00 SY
47.00-50.50

New Holland Hogs

NEW HOLLAND, PA
DECEMBER 23, 1996
TREND: Compared to last Monday
barrow and gilts 1.50 higher.
BARROWS AND GILTS: US 1-2
215-255 lbs 55.00-55.50 US 1 Couple, lots
215-255 lbs 56.00-56.25 US 1-3 215-275
lbs 53.00-54.75 Couple lots 205-210 lbs
45.85-47.25

New Wilmington Graded Feeder Pig Sale

New Wilmington, PA
December 20, 1996
FEEDER PIGS 228. 52.0 LBS. PER
PIG; 49.41 PER HEAD, 93.98 PER
HUNDRED WEIGHT. ALL PRICES PER
HUNDRED WEIGHT.
US#1-2 30-40 LBS. 100.00-116.00;
40-50 LBS. 108.00-127.50; 50-60 LBS.
90.00-96.00; 60-70 LBS. ONE LOT 82.50;
70-80 LBS. 75.00-77.50.
US#2 30-40 LBS. 97.50-120.00; 40-50
LBS. 85.00-127.50; 50-60 LBS. 80.00;
60-70 LBS. 80.00-85.00; 70-80 LBS.
SMALL LOT 80.00.
US#2-3: 20-30 LBS. FEW 80.00; 30-40
LBS. FEW 87.50-97.50; 40-50 LBS. FEW
90.00-110.00; 50-60 LBS. ONE LOT
80.00.



Leinbach's Hay

Shippensburg, PA
Dec. 21 and 24
Report Supplied by Auction
100 LOADS.
ALFALFA: 87.50-194.00.
MIXED HAY: 60.00-150.00.
TIMOTHY: 80.00-127.50.
CLOVER: 95.00.
BROMEGRASS: 85.00-140.00.
ORCHARDGRASS: 70.00-112.00.
STRAW: 70.00-148.00.
EAR CORN: 76.00-100.00.
CORN FODDER: 56.00-64.00.
OATS: 3.00 BU.
MULCH: 27.00-44.00.
WOOD: 32.50-42.00.

Kirkwood Hay Auction

Kirkwood, Pa.
Tuesday, December 24, 1996
Report Supplied by Auction
42 LOADS OF HAY.
MIXED HAY: 1ST CUTTING
104.00-170.00, 2ND CUTTING
112.00-122.00.
TIMOTHY: 154.00-285.00.
ALFALFA: 1ST CUTTING
127.00-176.00, 2ND 135.00-176.00, 3RD
165.00-191.00, 4TH 144.00-190.00.
CLOVER: 151.00.
GRASS: 140.00-156.00.
WHEAT STRAW: 118.00-146.00.
BARLEY STRAW: 116.00.
FIREWOOD: 36.00 SMALL LOAD.
STARTING TIME 11 A.M.

Middleburg Hay

Middleburg, PA
Tues., December 24, 1996
Report supplied by PDA
40 LOADS OF HAY.
ALFALFA: 100.00-147.50.
MIXED HAY: 80.00-165.00.
TIMOTHY: 95.00-150.00.
STRAW: 8 LOTS, 88.50-140.00.
EAR CORN: 5 LOTS, 80.00-92.00.
OATS: 7 LOTS, 2.10-2.70 BU.

The Windmill

Penn Yan, N.Y.
Friday, Dec. 20, 1996
Report Supplied by Auction
TIMOTHY: 1ST CUTTING 90.00-97.00.
ALFALFA: 1ST CUTTING
60.00-75.00, 2ND CUTTING
135.00-162.00.
ALFALFA TIMOTHY MIX: 2ND
CUTTING 97.00-185.00.
MIXED GRASS: 80.00-114.00.
STRAW: 1 LOAD AT 123.00.
HAY SALE EVERY FRI. AT 11 A.M
SHARP.

Greencastle Livestock Market

Dec. 19 and 23
Hay & Straw
Report Supplied by Auction
54 LOADS.
ALFALFA: 110.00-175.00.
TIMOTHY HAY: 80.00-151.00.
MIXED HAY: 68.00-138.00.
STRAW: 130.00.

Diffenbach Auction Center

New Holland, Pa.
Monday, Dec. 23, 1996
Report Supplied by Auction
TOTAL LOADS: 179.
ALFALFA: 100.00-295.00.
MIXED HAY: 90.00-200.00.
TIMOTHY: 95.00-200.00.
CLOVER: 110.00.
ORCHARDGRASS: 90.00-165.00.
STRAW: 72.00-130.00.
EAR CORN: 105.00.
STUBBLE HAY: 110.00.
CORN FODDER: 49.00.
OATS: 3.35.
FIREWOOD: 50.00-88.00 LOAD.

North Jersey Market

Hackettstown, N.J.
Report Supplied by Auction
Tuesday, December 23, 1996
Hay—Straw &
Grain Report
ALFALFA: 1 LOT, 3.35 BALE.
MIXED HAY: 12 LOTS, 1.25-2.80
BALE.
TIMOTHY: 1 LOT, 2.50 BALE.
GRASS: 5 LOTS, 1.50-2.50 BALE.
WHEAT STRAW: 2 LOTS, 2.50 BU.
SHELLED CORN: 2 LOTS, 4.50 AND
5.00 BALE.
GROUND CORN: 1 LOT 5.75 AND
5.85.
24 LOTS TOTAL.

Vintage Hay

Paradise, PA
Thurs., December 26, 1996
Report Supplied by Auction
ALFALFA: 133.00-143.00.
TIMOTHY: 122.00-129.00.
MIXED HAY: 110.00-145.00.
STRAW: 110.00-111.00.

Regional Hay

December 23, 1996
Eastern Pa.
HAY & STRAW MARKET FOR
EASTERN PA - (ALL HAY NO. 2 AND
BETTER. PRICES PAID BY DEALERS
AT THE FARM & PER TON.) HAY AND
STRAW STEADY.
ALFALFA 100.00-150.00; MIXED
HAY 90.00-140.00 FEW REPORTED
150.00; TIMOTHY 90.00-140.00 FEW
REPORTED 150.00; STRAW
70.00-100.00; MULCH 25.00-40.00.
SUMMARY OF LANCASTER CO.
HAY AUCTIONS FOR WEEK ENDING
12/20/96. PRICES PER TON: LOADS:
293 HAY, 60 STRAW & 13 EAR CORN.
ALFALFA 117.00-206.00; MIXED
HAY 105.00-202.00; TIMOTHY
95.00-175.00; STRAW 89.00-137.00;
EAR CORN 88.00-96.00.

SUMMARY OF CENTRAL PA HAY
AUCTIONS FOR WEEK ENDING
12/20/96. PRICES PER TON: LOADS:
188 HAY, 33 STRAW & 15 EAR CORN.
ALFALFA 95.00-200.00; MIXED HAY
91.00-150.00; TIMOTHY 97.00-150.00;
STRAW 76.00-124.00; EAR CORN
75.00-106.00.

Green Dragon Hay

Ephrata, Pa.
Friday, December 20, 1996
Report Supplied by Auction
110 TOTAL LOADS.
MIXED HAY: 44 LOTS, 61.00-196.00
ALFALFA: 17 LOTS, 104.00-265.00.
TIMOTHY: 18 LOTS, 95.00-170.00
STRAW: 11 LOTS, 100.00-135.00
EAR CORN: 6 LOTS, 70.00-94.00.
ORCHARDGRASS: 8 LOTS,
120.00-187.00.
CLOVER: 110.00.
SOYBEAN STUBBLE: 57.00.
FIREWOOD: 37.00 AND 105.00
CORN SCREENINGS: 60.00.
WOOD SHAVINGS: 100.00 LOAD.

CARLISLE LIVESTOCK MARKET, INC.
FED and FEEDER CATTLE SALE
TUES. DEC. 31 7:00 PM
Early Bird Pens Close 2 PM
Turn South Off I-81 @ Exit 12
Market (717)249-4511
Evenings Jim (717)249-2359

HAY, STRAW & GRAIN SALE
Every Thursday at 12 NOON
Vintage Sales Stables, Inc.
(Rt. 30, 10 miles east of Lancaster in Paradise, PA)
For info. (717) 442-4181 bus. (610) 458-8518 home

HERE TODAY • HERE TO STAY
For Buying or Selling Livestock
Call Dunlaps at (717) 397-5136

Slaughter Cattle Every Monday 9:30 AM
Feeder Cattle Every Friday at 12 Noon
Graded Sow & Boar Sales Jan 7 & 21, 1997
2 sales each month!
(1st & 3rd Tues. of month)
Receiving 6:00 AM to Noon SALE - 2:00 PM (INDIVIDUALS)
2:30 PM - Large Lots (TELE-AUCTION)
Sows to be graded & weighed in 50 lb increments
PROBLEM SOWS SOLD SEPARATELY

Receiving Market Hogs
Holiday Schedule Jan. 2
Sheep & Goats Auction Mondays - 9:30 AM

Walter M. Dunlap and Sons
LANCASTER STOCKYARDS
An Old Line Commission Firm Dedicated to Livestock Marketing for the 21st Century!

PENNFIELD GRAIN BANK

Pennfield Offers A Sound Program For The Dairy Farmer To Use His Grain "Same As Cash" To Reduce His Monthly Feed Bill And To Avoid Having To Take "Harvest Price" For His Grain

Prices Week Of 12/30/96
Corn \$3.12 Bu.
Soybeans \$7.10 Bu.
Barley \$3.45 Bu.

- No Storage Charges
- Prices Updated Weekly
- Grain Bank Balance Shown On Each Invoice
- No Hidden Charges

For every ton of qualifying dairy feed purchased you will receive one ton of grain back hauled at no charge

CUSTOMER SERVICE DEPT
OPEN 7 HOURS A DAY
Call 1-800-732-0467
pennfield feeds

Lancaster Farming

INDEX
Four Sections

DEPARTMENTS
Editorial A10
Farm Calendar..... A10
Farm Forum A10
Futures A16
Mailbox Markets.....B14
Public Auction Register.....B19
Business News C 2
Classified AdsC10, D 2

FEATURES
Rough Year A19
Md. Dairy A22
Successful Farming.....B 2
Livestock Team.....B12
Warren 4-HB12
Farm SignsB13

DAIRY
Guernsey News A22
Pa. DHIA Focus A24
Reproduction Efficiency A28
Pa. DHIA.....C 4

COLUMNS
Now is the Time..... A10
On Being A Farm Wife.....B 4
Taking Time.....B 5
All Garden's.....B 7
Ida's Notebook.....B11

HOME AND YOUTH
Homestead NotesB 2
Home On The RangeB 6
Cook's Question CornerB 8
You Ask, You Answer.....B 9
Kid's KornerB10
FFA HappeningsB11
4-H HappeningsB12, B32