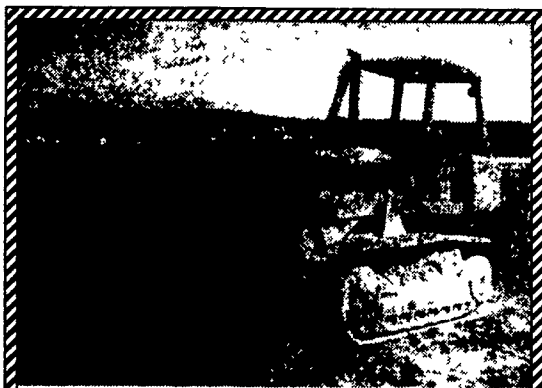


766 DIESEL TRACTOR, MW, turbo, 18.4-38 radials, dual outlets, 540+1000 PTO, WFE, \$10,000  
 '77 FORD 3/4 TON FLATBED PICK-UP, 4 spd, V-8, \$500  
 72 FORD F-600 DUMP, V-8, 4 spd, 2 spd rear, \$2700  
**(410) 658-5299**



• 1981 J.D. 755A Crawler Loader, Rebuilt Eng. Hydrostatic Unit Rebuilt & New Oil Cooler, \$20,000  
**(717) 445-9907**

1000 Gal. Alum. Nurse Tank.....\$500  
 12' Buster Bar.....\$400  
 60 Gal. Herbicide Tank/Pump.....\$200  
 Holland 5th Wheel w/Low Arch Rails ..\$400  
 600 Gal. Army Skid Tank.....\$200  
 Remote Hyd. Valve for Wet Line.....\$300  
 J.D. 440 Snowmobile.....\$750  
**(410) 272-3638**

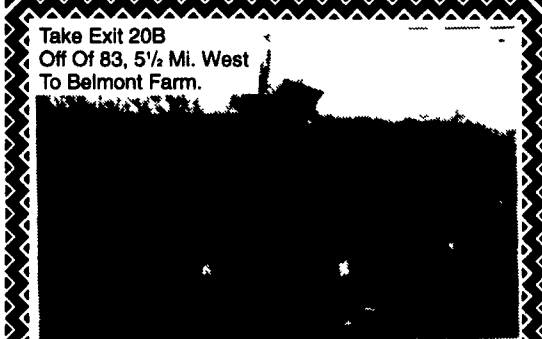
**Rugged 1/4 Inch Steel Hay Feeders**  
 Available from 76 to 100 ft. long. 2 wheels or 4 wheels. Available with self-locking panels.  
**J&L Equipment**  
 RR 3, Box 53B  
 Stoystown, PA 15563  
**814-893-5086**

**LESTER HORNING**  
 585 Indiantown Rd.  
 Ephrata, PA 17522  
**717-738-1677**

Kubota L2350 diesel, 4x4, w/loader, only 112 hrs., like new.....\$13,500  
 JD 214 riding mower, 46" w/snow blade.....\$1,450  
 JD 3150, 4x4 ROPS, only 2700 hrs., very nice. CALL  
 Cub Cadet 1650 riding **SOLD** snow blower. \$1,650  
 JD F935 diesel, w/72" deck, nice.....\$5,400  
 New Berco snowblowers fits JD 318.....CALL  
 JD snowblower fits JD front deck.....\$1000  
 JD snowblade fits 200 series.....\$250

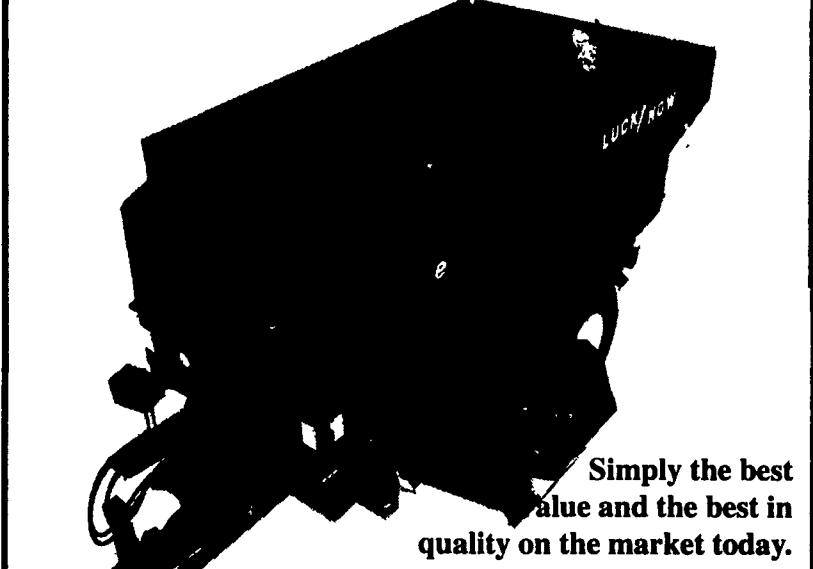
NH 474 haybine, 7', very nice.....\$4,200  
 NH 30 blower, nice.....\$650  
 JD 3960 Harvester, Elec. Controls, Nice.....\$5,200  
 NH 900 Hay Head, Very Nice.....\$1,850  
 NH 316 baler w/ #70 thrower, nice.....\$5,900  
 JD 337 Baler w/ Thrower, nice.....\$4,700  
 Grimm hay tedder, 9', PTO drive:.....\$975

Brillion 10T chisel plow, high clearance, very nice.....\$1,650  
 White 348 plow, 3x18, SRS, excel. cond. \$2,000  
 Talorway 5T disc chisel, very nice.....\$3,950  
 JD 7000 corn planter, 6R, dry fert., monitor. \$5,400  
 IH 45 field cultivator, 12', pull type, good cond. \$1,200  
 McKee 14' field finisher w/rolling baskets, 3pt.....\$1,450  
 IH 4500 field cultivator, 14', 3pt, nice.....\$950



Take Exit 20B  
 Off Of 83, 5 1/2 Mi. West  
 To Belmont Farm.  
**Good Winter Chore Tractors**  
 IH 656 Gas, Factory Wide Front, 3 Pt., PTO  
 \$4,500  
 IH 706, Gas, F.H., w/Dual 3650 High Lift (15'3") Quick Attach Ldr.  
 \$6,350 - Will Separate  
 Also Available  
 IH 656, Diesel, Hydro, 3 Pt., WF, Extra Nice \$6,500  
 Financing & Trucking Available  
**410-833-9091**

**THE LUCKNOW MIXER WAGON**



Simply the best value and the best in quality on the market today.  
 Call your nearest dealer today.  
 N.J., DEL, MD EASTERN SHORE MARTINSBURG, PA  
**JONES DAIRY SERVICE WINELAND EQUIPMENT, INC.**  
 (800) 801-2082 (814) 793-2109  
 LEOLA, PA  
**M.M. WEAVER & SON**  
 (717) 656-2321

**GUNTHER HEUSSMAN INC.**  
 4801 S. 5TH ST., EMMANUS, PA 18049 610-965-5203

**WE ARE CASH BUYERS FOR CLEAN, LATE MODEL FARM EQUIPMENT**

**QUALITY TRACTORS**  
 1990 JD 4055, Cab, Air, Power Shift, Triple Hyd., Ex. Cond.  
 JD 4050 4-Post, Quad Range, Good Cond.  
 JD 5200 Diesel, 4x4, 590 Hrs., w/540 Loader, Excel. Cond.  
 JD 4840 Cab, Air, Power Shift, Factory Duals, Good Cond.  
 JD 4050 Cab, Air, Power Shift, 4x4, Very Nice  
 JD 4440 Cab, Air, Quad, 20x38 **SOLD** Tr, Very Nice  
 JD 4040 Cab, Air, Quad Range, 2,600 hrs., 1-owner, very nice  
 JD 4320 Diesel, WF, Roll Guard, 4100 Hrs., Good Cond.  
 1972 JD 4020 Diesel, Sycro, Factory Cab, WF, Dual Hyds., Good Cond.  
 1991 JD 2955 Cab, Air, 4x4, 1700 1-Owner Hours, Exc. Cond.  
 JD 2555 Roll Bar, 4x4, 2000 Hrs., w/245 Loader, Good Cond.  
 JD 2955 Dsl, Cab, Air, MFD, HI-Lo, Excellent Cond.  
 JD 2555 Fender, 15x38 Rack & Pinion, Good Cond.  
 JD 2440 HI-Lo Indept. PTO W/146 Loader, Very Nice  
 1976 IH 1066, Black Stripe, Cab, Air, 891 1-Owner Hrs., Like New  
 1976 IH 1066 BS, Cab, Air, 3500 Hrs., Excel. Cond.  
 IH 1066 Cab, 3700 Hrs., 1-Owner, Good Cond.  
 IH 686 Dal, WF, 3 Pt., 2500 Hours, Very Nice  
 MF 35 Gas PS, Live PTO, 1 Of A Kind  
 1967 Case 455C Crawler Loader, Good Cond.

**CORN PLANTERS**  
 JD 7200 4R Dry Conserv., Excel Cond.  
 JD 7000 4R, Dry Fertilizer, Insecticide Monitor, Excel. Cond.

**MISCELLANEOUS EQUIPMENT**  
 Woods 10' Off-Set Hyd. Fold Rotary Mower  
 JD 506-609 Rotary Mowers  
 JD 240 Quicktatch Loader, Very Nice  
 Case IH 5100 18x7 Grain Drill, Grass Seed, Almost New

**CORN HEADS**  
 JD **SOLD** W  
 JD 443, 4RN AC 630 M2 or L2  
 JD 443, 4RN, Oil Bath AC K330, 3RN  
 JD 4 **SOLD** W Oil Bath IH 1063, 6RN  
 JD 444, 4RW JD 643 Oil Bath  
 JD 643 HI Tin  
 AC 430, 4RN, Black Fil

**HAY EQUIPMENT**  
 JD 435 Round Baler w/Net Wrap, Like New  
 JD 1360 Disc Mower Condition, Excel. Cond.  
 Ford NH 855 Round Baler w/Bale Command, Very Nice  
 NH 846 Round **SOLD** Tr, Excel. Cond.  
 NH 848 **SOLD** Baler  
 JD 1219 9' Mower Condition, Good Cond.  
 JD 337 Baler w/Ejector, Elec. Controls, Excel. Cond.  
 Ford NH 316 Baler w/Hyd. Belt Thrower, Excel. Cond.  
 JD 1460 Mower Conditioner, Good Cond.  
 NH 474, 7' Haybine, Excellent Condition  
 NH 472, 7' Haybine, Excel. Cond.  
 JD 660 Rake, Like New  
 Vicon 4 Star Hay Tedder  
 NH 256 & 258 Hayrakes  
 NH 489 Haybine, Excel. Cond.  
 JD 670 Hay Rake, Good Cond.  
 Kuhn 14' Hay Tedder, Good Cond.  
 NH 846 Round Baler, Good Cond.

**PLOWS**  
 IH 725 5x18 Spring Reset  
 IH 710 5x18 spring Reset  
 IH 710 4x18 Spring Reset  
 JD 1460 **SOLD** Trip  
 IH 710 6x18 Spring Reset On-Land Hitch

**QUALITY COMBINES**  
 (Displayed Inside Building)  
 JD 9500 1-Owner 630 hrs., Like New  
 Case IH 1660 Fully Equipped, Excel. Cond.  
 1981 JD 4420 D **SOLD** Cab, Air, Very Nice  
 1988 JD 7720 Titan II Fully Equipped, Excel Cond.  
 1977 JD 7700 Diesel, Cab, Air, Hydro  
 1988 JD 6620 Titan II, Fully Equipped, 1 Owner, Exl. Cond.  
 AC Gleaner F2 Cab, Air, Hydro, Good Cond.  
 MF 205 Gas, Cab, w/10' Grain Head, Excel. Cond.  
 JD 915 Flex Head  
 JD 215 Flex Heads,  
 JD 213 Flex Heads  
 IH 820, 13' Flex Head  
 23x26 Deep Lug Mud Tires  
 New Pequea Header Wagons

**HARVESTERS**  
 JD 3970 Harvester w/Electrical Controls, Iron Guard, Spout Track, Good Cond.

JD 3950 Harvester, Elect Controls, Good Cond.  
 JD 3940 Harvester, Elect Controls, Good Cond.  
 JD 7' Pickup Head  
**TILLAGE**  
 Brillion 21' Hyd. Fold Roller Harrow  
 Brillion 12' Roller Harrow, Dual Wheels, Excel. Cond.  
 Brillion 21' Hyd Fold Packer, Excel. Cond.  
 Brillion 15' Roller Harrow, Good Cond.  
 Glencoe 12' Rock Flex Disc, Good Condition  
 IH 496 23' Rockflex Disc, Excel. Cond.  
 JD 1610 8&9 Shank Pull Type Chisel Plows  
 Brillion 14' Roller Harrow, Good Cond.  
 IH #14 5 Shank **SOLD** Tr - spring reset  
 Miller 12' Offset Disc, Good Cond.

**NEW HOLLAND STACK WAGONS**  
 NH 1003 Bale Wagon, 80 Bale Capacity, Excel Cond.  
 NH 1033 Bale Wagon, 105 Bale Capacity, Good Cond.

**YEAR-END SPECIALS**  
 JD 4040 Diesel, Cab, Air, Quad, 4x4.....\$14,800  
 IH 496, 23' Rock Flex Disc.....\$6,850  
 NH 848 Round Baler. **SOLD**.....\$5,850  
 JD 4640 Cab, Air, Quad Range.....\$18,000  
 JD 1610, 10' Pull Type Chisel Plow.....\$1,100  
 White 10' Pull Type Chisel Plow.....\$950  
 New Yetter 15' Rotary Hoe.....\$1,550  
 IH #14, 5 Shank V-Ripper Spring Reset **SOLD**.....\$2,250  
 NH 472, 7' Haybine.....\$2,850

