

Top Lancaster DHIA Cows By Protein For November

(Continued from Page A18)

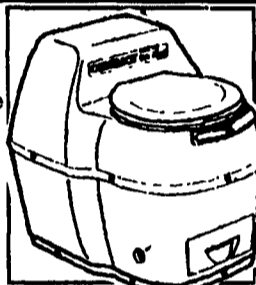
BARBIE	RH	3-6	305	25,780	3.2	835	3 3	848
ABRAHAM SHELLY JR		MANHEIM						
BUFFY	RH	5-2	305	28,472	3.4	956	3 7	1055
WALNUT RUN FARM		LITITZ						
74	RH	5-3	305	30,020	3.2	953	2.9	863
206	GR-H	3-11	305	28,633	3.1	895	3.3	946
286	GR-H	3-2	305	26,080	3.2	844	3.7	960
91	RH	4-11	305	29,099	2.8	815	3.4	975
SAMUEL L FAUS		QUARRYVILLE						
46	GR-H	6-3	305	28,640	3.3	939	3.6	1022
BARL N LANDIS		MANHEIM						
PAULA	RH	5-11	305	29,774	3.2	938	3.6	1066
LEROY H. HOOVER		NEW HOLLAND						
JULIE	GR-H	4-5	305	29,157	3.2	935	3.2	942
BONITA	GR-H	3-0	305	27,196	3.3	906	3.5	947
JS SMUCKER-SONS FM-1		NEW HOLLAND						
1049	RH	5-3	305	28,936	3.2	929	3.6	1049
1134	RH	3-9	305	28,578	3.0	846	3.5	1002
IVAN S STOLTZFUS		HONEY BROOK						
AGNES	RH	3-4	305	27,319	3.4	925	3.5	958
LEONARD J STOLTZFUS		GAP						
PIZZ	RH	5-6	305	33,803	2.7	924	3.1	1038
LEAH	RH	3-6	305	24,950	3.3	816	3.5	866
TOM ZARTMAN		BPHRATA						
126	GR-H	4-1	305	27,278	3.4	922	3 3	891
RED KNOB FARM		PEACH BOTTOM						
1308	GR-H	5-2	305	27,835	3.3	921	3 7	1028
1428	GR-H	4-4	305	29,692	2.8	842	3.6	1079
1131	GR-H	6-7	305	27,670	2.9	815	3.4	947

1633	GR-H	3-0	305	25,942	3.1	808	3 1	795
AMOS K KING JR		LITITZ						
WINKY	RH	4-0	305	32,456	2.8	918	2 8	911
KREIDER DAIRY FARMS		MANHEIM						
1471	GR-H	4-10	305	26,937	3.4	916	3 7	998
243	GR-H	6-11	305	24,660	3.3	803	3.9	973
ROY E SENSENIG		NOTTINGHAM						
54	RH	5-4	305	29,948	3.0	913	3 7	1117
133	GR-H	3-2	305	28,333	3.1	876	3 1	868
DALE WEILER		BAST EARL						
BOPEEP	RH	4-8	305	30,374	3.0	913	3.3	997
LUKE E MARTIN		LITITZ						
08	GR-H	4-2	305	27,279	3.3	909	4.1	1130
NATE+TRISH STOLTZFUS		HONEY BROOK						
CAROL	RH	3-2	305	29,466	3.1	909	2.9	841
NORMAN H NOLT		LEOLA						
AMY	RH	3-1	305	24,920	3.6	906	3 5	877
CLAY FARM		LITITZ						
BRTSY	RH	7-3	305	32,942	2.7	905	3.4	1135
FLO	RH	4-2	305	27,274	3.2	879	3 5	952
BLAKIE	RH	4-1	285	29,109	3.0	859	3 4	997
SUNRIS	RH	2-8	305	24,438	3.5	846	3.8	926
DARYL & ROSE WEAVER		WOMBLSDORF						
137	GR-H	4-4	305	30,495	3.0	904	3.0	918
64	GR-H	4-0	305	29,642	3.0	902	3 3	991
21	GR-H	2-3	305	26,731	3.1	824	2.9	787
RALPH E MOYER		MYERSTOWN						
115BRN	RH	7-2	305	29,659	3.0	903	3 8	1117
3CASBY	RH	3-9	305	27,868	3.1	866	3.2	891
WELK SHADE HOLSTEINS		QUARRYVILLE						
KATIE	RH	6-0	305	29,277	3.1	903	3 2	938
KERRY & SHARON MUSSER		MT JOY						
EDIE	GR-H	3-1	305	28,472	3.2	901	3 4	954

(Turn to Page A20)

WATERLESS TOILETS

"SUN-MAR" Composting Toilets
 Several models available including non-electric.
 • NO Septic System
 • NO Chemicals
 Save the Environment!
 Recycle Back to Nature!
FREE:
 12 Page Color Catalog

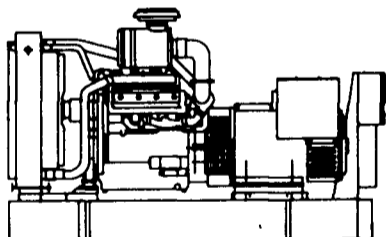


Hard Water Problems?

We have **The Alternative**
 * 90 Day Guarantee!
 * Inexpensive
 * Maintenance Free
 * Environmentally friendly
 * Uses no salts or chemicals
 The Strongest, **aqua tron**
 Most Effective
 Electronic Descaling
 Technology on the
 Market Today
\$299

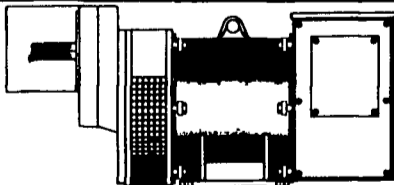
We Reclaim Failing Septic Systems - Guaranteed Results!
ECO-TECH Call Today 1-800-879-0973

GENERATOR SYSTEMS 1-800-779-8809

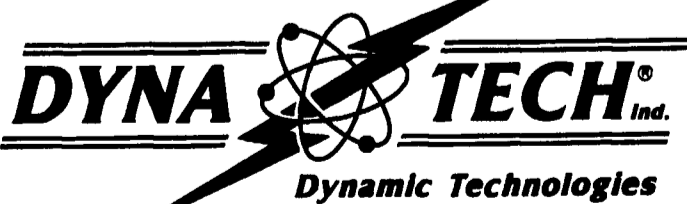


**New & Used 5 to 2500 KW
 Diesel • Propane • Natural Gas**

**24 Hour Emergency Service
 Sales - Installation
 Maintenance Contracts • Rentals**



**10 To 150 KW 1800 RPM Brushless
 Tractor Driven Generators**



DYNA-TECH INDUSTRIES

602 E. Evergreen Rd., Lebanon, PA 17042

717-274-8899 FAX 274-8934

Ask About Our Lightning & Surge Protection Units
 Panel Mount • Plug-In • Electric Fence Protection



FIDELITY TRU-GRIP FARM TIRES

PRE-WINTER SPECIALS

Month of December only.
 Expires Jan. 1, 1997

9.5-24	4 ply	\$105.00
11.2-24	4 ply	\$109.00
12.4-24	4 ply	\$142.00
14.9-24	4 ply	\$186.00
14.9-24	6 ply	\$200.00
16.9-24	6 ply	\$237.00
16.9-24	8 ply	\$312.00
11.2-28	4 ply	\$142.00
12.4-28	4 ply	\$132.00
13.6-28	4 ply	\$149.00
13.6-28	6 ply	\$166.00
14.9-28	4 ply	\$194.00
14.9-28	6 ply	\$212.00
16.9-28	6 ply	\$257.00
16.9-30	6 ply	\$244.00
18.4-30	6 ply	\$347.00
18.4-30	8 ply	\$358.00
16.9-34	6 ply	\$281.00
18.4-34	6 ply	\$308.00
18.4-34	8 ply	\$377.00
13.6-38	4 ply	\$211.00
13.6-38	6 ply	\$234.00
15.5-38	6 ply	\$218.00
16.9-38	6 ply	\$330.00
16.9-38	8 ply	\$378.00
18.4-38	6 ply	\$320.00
18.4-38	8 ply	\$347.00

24 Hour farm tire service

Chains on Special
 Front Tractor & Wagon Tires.
 Permanent Antifreeze \$3.30 Gallon
 Exide Batteries Low - Low Prices

**Call us first & save
 1-800-437-4961**

**JOE'S BATTERY & TIRE
 2225 UNION BLVD.
 ALLENTOWN, PA 18103**

**MILK
 AMERICA'S HEALTH KICK**

IN GROUND MANURE STORAGE INSTALLATIONS



- ★ S.C.S. Approved
- ★ Underlayment between Liner and Earth
- ★ High Density Polyethylene (60 mil thick) Liner Guaranteed for 20 Years
- ★ More Economical than Concrete
- ★ Leak Detection System
- ★ Installed on site by our Certified Installers



The Vacu-Pump

- ★ High Discharge Evacuation Pump
- ★ Available With 20" and 28" Turbine
- ★ Balanced Turbine
- ★ Main Shaft Mounted On Tapered Bearings In Oil Bath
- ★ Work At 540 R.P.M.

MANADA CONSTRUCTION CO.

LAND IMPROVEMENT & EXCAVATION CONTRACTORS
 151 Meckville Road, Myerstown, PA 17067
717-933-8853 or 933-4062