

# Top Lancaster DHIA Cows By Protein For November

The cows that finished protein records of 800 or more pounds in November in Lancaster DHIA are listed as follows:

OWNER	COW'S NAME	BREED	AGE	DAYS	MILK	PROT	PRO-TB IN	FAT	FAT
MARVIN R STOLTZFUS			LEOLA						
	ROXY	RH	4-5	305	36,411	3.0	1103	2.5	911
	ALMA	RH	6-4	305	29,340	2.9	843	3.3	957
	274	RH	4-1	305	27,280	3.0	826	3.2	886
DENNIS E TICE			COLUMBIA						
	MONICA	RH	5-10	305	36,856	2.9	1082	3.4	1239
	TRUDY	RH	2-1	305	24,240	3.6	861	2.9	706
CHRIST K STOLTZFUS			LEOLA						
	FAY	GR-H	6-11	305	36,378	2.9	1066	3.4	1245
J S SMUCKER&SONS FM2			NEW HOLLAND						
	1146	RH	3-6	305	35,032	3.0	1048	2.9	1033
	1011	RH	6-1	301	24,818	3.3	817	4.1	1021
FULTONWAY FARM INC			WILLOW STREET						
	MINDEE	RH	4-9	305	31,110	3.4	1044	3.4	1067
	VICTOR	RH	6-11	305	31,101	3.2	991	3.4	1048
	PRIDE	RH	3-3	305	29,637	3.3	979	4.0	1192
	JULY	RH	4-5	305	31,972	3.1	978	2.9	943
	MELANE	RH	5-9	305	29,339	3.3	965	4.6	1355
	GLIMER	RH	4-2	305	29,590	3.2	941	4.6	1347
	HAPPY	RH	5-3	305	29,196	3.2	926	3.7	1068
	HI-TEK	RH	3-7	305	27,186	3.4	922	3.3	889
	ALMA	RH	2-10	305	27,735	3.2	899	3.9	1070
	DENISE	RH	8-3	305	30,300	2.9	889	3.2	964
	DARLNG	RH	4-3	305	25,446	3.5	881	3.9	986
	BRANDY	RH	3-5	305	26,224	3.3	873	4.2	1094
	GENIE	RH	6-2	305	27,036	3.2	862	4.2	1135
	HELEN	RH	5-3	281	26,267	3.1	826	4.0	1039
	JUSTIN	RH	2-1	305	24,735	3.3	817	3.8	940
JOSEPH C WIVELL			COLUMBIA						
	GLOW	RH	3-2	305	36,948	2.8	1034	2.6	978
	GIGI	RH	2-1	305	27,727	3.1	863	3.4	954
WEA-LAND FARM			QUARRYVILLE						
	HOB1	PH	5-7	305	29,539	3.5	1027	4.1	1208
	KENDRA	PH	3-8	305	29,203	3.4	980	3.8	1109
	BONNIE	RH	3-5	305	29,812	3.3	970	3.1	924
	PROMIS	RH	5-2	305	22,437	3.8	843	4.6	1038
	ANDREA	RH	4-5	305	26,944	3.1	829	3.9	1040
JOHN E COLEMAN JR			RONKS						
	BLISS	RH	3-2	305	29,245	3.4	1005	3.8	1102
	SALLY	RH	4-4	305	30,446	3.1	950	3.7	1119
	MEARA	RH	5-3	305	28,331	3.3	935	3.8	1075
	SARA	RH	2-11	305	25,882	3.2	836	4.1	1068



Lancaster Dairy Herd Improvement Assoc.  
1592 Old Line Rd. Manheim, PA 17545  
(717) 665-5960

MIKE S ZOOK			HONEY BROOK						
	SWISS		5-10	305	28,977	3.4	990	3.3	953
CURVE ACRES FARM			NEWMANSTOWN						
	75	GR-H	4-7	305	34,566	2.9	988	2.8	977
	73	GR-H	8-2	305	23,122	3.5	800	3.9	891
MISTI KNOLL FARM			KINZER						
	TOP	RH	3-9	305	31,111	3.2	983	3.8	1167
	LUCKY	RH	7-0	305	30,650	3.0	911	3.4	1049
GERALD MARTIN			BPHRATA						
	MONA	RH	5-0	305	30,391	3.2	978	3.3	1001
	LOUANN	RH	3-7	305	26,770	3.2	844	3.8	1006
	EMILY	RH	4-5	305	30,832	2.7	842	3.3	1014
	SHAWN	RH	8-4	305	25,913	3.1	804	4.1	1067
DAVID J. KULP			MANHEIM						
	145	RH	4-1	301	27,219	3.6	974	3.8	1047
	54	RH	4-2	305	23,842	3.5	843	4.8	1152
DANIEL B STOLTZFUS			PEACH BOTTOM						
	MABLE	RH	3-0	305	28,480	3.4	973	3.4	980
EDWIN JOHNSON			AIRVILLE						
	ELVA	RH	4-7	305	29,015	3.3	972	3.7	1075
	TINSEL	RH	4-10	305	25,237	3.2	806	3.9	974
B RICHARD BRUCKHART			MANHEIM						
	CALICO	RH	4-9	305	32,159	3.0	958	2.6	826

(Turn to Page A19)

## EQUIPMENT FINANCING

- Exclusive Approval Guarantee
- Same Day Approvals
- Flexible Terms
- New or Used Equipment
- Seasonal Payments
- 100% Financing
- Save on Taxes
- No Financials Needed \$2,000-\$75,000

Let GATEWAY Be Your Equipment Financing Solution

Start Earning New Profit With Additional Equipment TODAY



800-783-1616

FAX 800-779-3515

ASK FOR IAN or TOM



Hatfield Quality Meats would like to commend these pork producers and allied industry people who have put in the time and effort to become certified as PQA Level III.

BILL ACHOR - HOSTETTER MGT.  
SCOTT AUGSBURGER - HOSTETTER MGT.  
SCOTT BAILY - HOSTETTER MGT.  
DOUG BRUBAKER - HESS MILLS  
ALVIN ESH - E.F. AG PRODUCTS  
KENTON GOOD - GOOD'S LIVESTOCK  
WILLARD GOOD - STEVEN'S FEED  
RUSSELL HARRISON - PURINA MILLS  
STEVE HYKES - PURINA MILLS  
DON KELSEY - STEVEN'S FEED  
DELVIN MARTIN - STEVENS FEED  
JOE STRITTMATTER - PIC

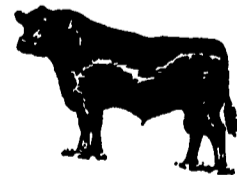
DANIEL BALL	JACI HARNER	EDWIN RANCK
DAVID BANTY	IRVIN HEFFNER III	JIM RANCK
GLENN BANTY	LEROY HINKEL	JOEL RUTT
MIKE BOLLINGER	ALLEN HINKEL	CAROLYN RUTTER
JAY BOMGARDNER	DAVID HINKEL	KEN SMITH
BUNTING SWINE FARMS	ELAM HOOVER	MARK STEHR
STEVE BURKHOLDER	FLOYD HUBER	PAUL STITELY
BRENDA BRUBAKER	MIKE JASIENSKI	JOHN K. STOLTZFUS
MYRTLE CAROWAN	MOSES KING	LORI STONE
BRYAN CROUSE	SAM KINSINGER	MARK TRACEY
ELAM G. ESCH	IRA LANDIS	DOUG TRADER
AARON FISHER	AMOS LAPP	JACKI TRADER
JOHN B. FISHER	GERALD LONG	DARYL WAMPLER
OMAR S. FISCHER	MIKE LONG	L. KEITH WEAVER
LUCINDA FREY	DAVID MARTIN	PAUL WEAVER
GEORGIA FRY	RAY MARTIN	SCOTT WELTY
EARL GEISSINGER	BOB MCMAIN	MATT WITMER
ERIC GLATSKY	PETE MICHISK	JOHN WOLGEMUTH
TODD GROVE	JOE MUSSER	HELEN VEGA
BARRY HALDEMAN	CLIFTON NOLT	LUIS VEGA
BRENT HARNER	JOHN NOLT	LESTER Z. ZIMMERMAN

The Pork Quality Assurance Program has several benefits:

- Decrease costs through a review of medication use.
- Improve herd health status.
- Awareness of responsible use of animal health products.
- Protect and expand export markets.
- Increase world-wide consumer demand for pork.
- Gain pride from producing "quality assured" pork.

To OBTAIN YOUR PQA LEVEL III GIFT FROM HATFIELD...  
CALL DUFF GEORGE AT: 1-800-523-5291 EXT.# 8528

REMINDER: Lan Chester Pork Producers PQA Meeting will be held December 18th.  
For more information call: Good's Livestock 1-717-445-4501



WALTER M. DUNLAP & SONS  
Lancaster Stockyard 717-397-5136  
1147 Lititz Pike, Lancaster, PA

FEEDER CATTLE SALE  
Wednesday Dec. 18 - Noon

- Two load of cattle from North East PA - Charlois Cross, weight 600 to 800 lbs.
- Load of Black Angus steers & Heifers from Eastern PA, weight 400 to 500 lbs.
- Load of calves from Snyder Co. weight 400 to 500 lbs.
- Plus 250 other local cattle

Consignments Are Welcome!

Beginning Jan. 3, 1997 -

Feeder Cattle Sales will be held at  
NOON on FRIDAYS

Slaughter cattle consignments are also welcome.