

Philadelphia Vegetable

PHILADELPHIA
DECEMBER 4, 1996

VEGETABLES

---ARTICHOKES: OFFERINGS LIGHT ctns CA 18s 26.0000-19.00 std 18.00-19.00
 ---BEANS: MARKET STEADY buctns/crts FL Round Green Type 12.00-14.00 some 10.00 ord-fair cond 4.00-8.00 Handpicked 14.00
 ---BEETS: MARKET ABOUT STEADY ctns bchd TX 12s 7.00-8.00 crts bchd FL 12s 8.00 25 lb flmbgs lse CD med 4.00-5.00 mostly 5.00
 ---BROCCOLI: MARKET ABOUT STEADY ctns CA bchd 14s 7.00-8.00 few 9.00 some including fair cond low as 5.00 bchd 18s 8.00-8.50 some including fair cond low as 5.00 Crown Cut 8.00-9.00 some including fair cond low as 5.00 NC bchd 14s fair cond 4.00-5.00
 ---BRUSSELS SPROUTS: MARKET SLIGHTLY LOWER 25 lb ctns CA 10.00-12.00 fair cond 6.00
 ---CABBAGE: MARKET ABOUT STEADY 1 3/4 bucrts & 50 lb ctns CD Red Type med 7.00-8.00 FL Round Green Type med 7.00 GA Round Green Type med 6.50-7.00 NC Round Green Type med 7.00-8.00 Red Type med 7.00-7.50 NY Red Type med 7.00-8.00 PA Round Green Type med fair cond 5.00 TX Round Green Type sml-med 6.00 50 lb sks NY Round Green Type lge 5.00 few 5.25 1 3/4 bucrts & 40 lb ctns CD Savoy Type med 7.00-8.00 NY Savoy Type med 7.00-8.00
 ---CARROTS: MARKET FILM BAGS SLIGHTLY LOWER, OTHERS ABOUT STEADY sks 48 1-lb flmbgs CA Topped med-lge 12.00-16.00 mostly 12.00-13.00 CD Topped med-lge 8.00 50 lb sks lse CA Topped jbo 12.00 CD CDOne Topped jbo 6.00-8.00 mostly 7.00 ctns bchd CA Bunched 24s 11.00
 ---CAULIFLOWER: MARKET ABOUT STEADY ctns flmwrpd CA 12s 7.00-8.00 some including appear low as 6.00 fair cond low as 4.00 9s 6.00-7.50 FL 16s 5.00-6.00
 ---CELERY: MARKET ABOUT STEADY ctns CA 2 dz 10.00-12.00 mostly 11.00 few 13.00 2 1/2 dz 10.00-12.00 mostly 11.00 few 13.00 flmb 30s 13.00-14.50 flmb 24s 14.50 ctns flmbgs CA Hearts 18s 15.00
 ---CHINESE CABBAGE: MARKET SLIGHTLY LOWER 30 lb ctns CA Nappa one label 16.00 celcrts FL 11.00-12.00 mostly 11.00 Nappa 11.00-12.00
 ---CORN-SWEET: MARKET ABOUT STEADY wbcrt FL Yellow 4 dz min 11.00 fair qual 7.00 White 4 dz min 11.00-12.00 some 10.00
 ---CUCUMBERS: MARKET ABOUT

STEADY 1 1/9 bucrts/crts FL Pickles 300-400s ord-fair cond 6.00-13.00 WAXED 1 1/9 bucrts/crts FL med fair appear 6.00-7.00 fr qual fair appear 5.00 MX med 8.00-10.00 sml few 8.00-10.00
 ---EGGPLANT: MARKET LOWER 1 1/9 bucrts wrpd FL med 6.00-8.00 fair qual and cond 2.00-3.00 MX 18s fair cond 5.00-7.00 24s fair cond 5.00
 ---ENDIVE: MARKET STEADY 1 1/9 bucrts/crts FL 10.00-11.00 10 lb ctns BL Witloof 18.00
 ---ESCAROLE: MARKET LOWER 1 1/9 bucrts/crts FL 10.00-12.00
 ---GARLIC: MARKET STEADY 30 lb ctns CA White super col 36.00 col 33.00 fair cond 28.50 exjbo 28.50 fair cond 24.00 MX White #9 30.00 #10 32.00
 ---GREENS: MARKET ABOUT STEADY ctns bchd CA Swiss Chard 12s 10.00 Red 12s 10.00 TX Dandelion 12s 7.00-8.00 Swiss Chard 12s 7.00-8.00 Red 12s 7.00-8.00 ctns/crts bchd GA Collard 24s 6.00-7.00 one lot 5.50 Kale 6.00-6.50 NC Kale 6.50 Mustard 7.00 Turnip Tops 7.00 Rape 7.00 VA Collard 5.50 Kale 5.50 ctns lse CA Kale Flowering 24s 10.00 20 lb ctns MX Broccoli Rabe 24s 18.00
 ---LETTUCE-ICEBERG: MARKET SLIGHTLY LOWER ctns AZ 24s 7.00-9.00 mostly 7.00-8.00 some low as 6.00 fair cond low as 4.00 Wrapped 24s fair cond 4.00-6.00 CA 24s 6.50-8.50 mostly 7.00-8.00 fair cond 4.00-6.00 Wrapped 24s 8.00 fair cond 4.00-6.00
 ---LETTUCE-OTHER: MARKET BOSTON AND BIBB LOWER, OTHERS ABOUT STEADY ctns AZ Boston 24s fair cond 6.00-8.00 Green Leaf 24s 8.00-9.00 few 9.50-10.00 Red Leaf 24s 7.00-9.00 mostly 8.00 few 9.50-10.00 CA Green Leaf 24s 8.00-9.00 mostly 8.00 Red Leaf 24s 8.00-9.00 FL Boston 24s 9.00-10.00 mostly 9.00 Green Leaf 24s 6.00-7.00 Red Leaf 24s 6.00-7.00 Bibb 24s 7.00-8.00 2.5 lb ctns CA Mesculin Mix 8.50-9.00
 ---LETTUCE-ROMAINE: MARKET SLIGHTLY LOWER ctns AZ 24s 7.00-9.00 some including fair cond low as 6.00 CA 24s 8.00-9.00 mostly 8.00 few 10.00 FL 24s 6.00-8.00 some including fair cond low as 6.00 1.3 bucrts AZ 24s 11.00 few 12.00
 ---MUSHROOMS: MARKET STEADY 10 lb ctns PA lge 12.00-12.50 mostly 12.00 med 9.50-10.00 mostly 9.50 4 qt bkts PA med-lge 5.00-5.50 few 4.75 sml-med 4.00-4.50 5 lb ctns PA Oyster 18.00-19.00 Cremini 9.00 Portobellas 9.50-10.50 few 9.00 3 lb ctns PA Shiitake 11.50-13.50 mostly 12.00-13.00 fair qual 8.50-10.50 Oyster 12.00-13.50 ctns 12 8-oz trays flmwrpd PA 8.00-8.50 ctns 10 12-oz trays flmwrpd PA 9.00-9.50 few 10.00 ctns 10 10-oz trays flmwrpd PA

8.00-8.50
 ---OKRA: TOO FEW SALES TO QUOTE
 ---ONIONS GREEN: MARKET SLIGHTLY LOWER ctns bchd MX 48s 7.50-9.00 mostly 8.00-9.00 crts bchd NJ Leeks 12s 12.00-14.00 ctns bchd AZ Leeks 12s 15.00 CA Leeks 12s 13.00-15.00
 ---PARSLEY: MARKET ABOUT STEADY crts bchd FL Curly 60s 11.00-12.00 mostly 11.00 Plain 60s 12.00-13.00 mostly 12.00 ctns bchd CA Curly 60s 11.00-12.00 30s 8.50 Plain 60s 11.00-12.00 30s 8.50
 ---PARSNIPS: MARKET STEADY ctns 12 1-lb flmbgs CD 10.00 20 lb flmbgs lse CD 12.00-13.00
 ---PEAS GREEN: MARKET SNOW PEAS LOWER, OTHERS ABOUT STEADY 10 lb ctns GU Snow Peas Decalaxed 20.00-22.00 mostly 20.00-21.00 few 23.00 Sugar Snap Peas Decalaxed 20.00-25.00 mostly 20.00-22.00
 ---PEAS OTHER: OFFERINGS INSUFFICIENT TO QUOTE
 ---PEPPERS: MARKET ABOUT STEADY 1 1/9 bucrts/crts FL Bell Type Green exlge 7.00-8.00 mostly 8.00 lge 6.00-8.00 mostly 6.00-7.00 med 5.00-6.00 sml 3.00-4.00 Mxd Red And Green med-lge 5.00-6.00 Red lge fair qual 12.00-14.00 sml 8.00-10.00 TX Bell Type Green med ord cond 1.00-3.00 Red med ord cond 1.00-3.00
 ---PEPPERS OTHER: 1/2 bucrts JM Scotch Bonnet 16.00 1 1/9 bucrts/crts FL Long Hot 15.00 MX Poblano 25.00 10 lb ctns DR Ajies 14.00
 ---RADISHES: MARKET ABOUT STEADY ctns tpd 30 6-oz flmbgs FL Red 5.75-7.00 mostly 6.00 ctns tpd 14 1-lb flmbgs FL Red 6.00-6.50 ctns bchd FL Red 24s 9.00
 ---RHUBARB: OFFERINGS NONE
 ---RUTABAGAS: 50 lb ctns CD CDOne med 8.00
 ---SPINACH: MARKET ABOUT STEADY ctns bchd CA Flat 24s 10.00-12.00 1 2/5 bucrts bchd CA Flat 24s 15.00 cel crt NJ Savoy fair qual 5.00-6.00
 ---SQUASH: MARKET ABOUT STEADY 1/2 & 5/9 bucrts/crts FL Zucchini sml-med 4.00-6.00 mostly 5.00 poor-ord cond .50-2.00 med 3.00 fair cond 2.00 Yellow Straightneck sml-med 5.00 med 3.00 4/5 bucrts MX Zucchini sml-med 5.00-6.00 fair cond low as 3.00 med 5.00-6.00 fair cond low as 3.00
 ---SWEET POTATOES: MARKET STEADY CURED 40 lb ctns LA U.S. One Beauregard med 15.00 NC U.S. One Jewels med 12.00-13.00
 ---TOMATOES: MARKET LOWER 25 lb ctns FL 85% U.S. One or Better Mature Greens pink-light red xlge 9.00 fair qual 8.00 poor-ord cond 1.00-4.00 lge 7.00 fair qual 8.00 red xlge 8.00 lge 5.00-6.00 Local Repack 85% U.S. One or Better Mature Greens pink-light red xlge 14.50 lge 13.50 med 12.50 fls 2 lyr CA Vine Ripes red 5x5s poor-ord cond 1.00-4.00
 ---TOMATOES, CHERRY: MARKET ABOUT STEADY fls 12 1-pt bkts CA light-red 9.00 FL red 5.00-6.00
 ---TOMATOES, PLUM TYPE: MARKET ABOUT STEADY 25 lb ctns

FL light red-red few 10.00 red 6.00-7.00 mostly 7.00 MX light red-red few 8.00-10.00
 ---TURNIPS: MARKET STEADY 25 lb sks NJ Purple Top med 5.00-6.00 mostly 5.00 PA Purple Top med 5.00
 ---VEGETABLES OTHER: 8 lb ctns CA Radicchio 9s 10.00 3 kg ctns GU Radicchio

8.00-21.00.
 LIVE TREES: 15.50-19.00.
 CUT PINE: 6-8' 4.50-9.50; DOUGLAS FIR 6-8' 8.50-13.00; SPRUCE 6' 7.50-9.00.
 POINSETTIAS: 4 INCH POTS 1.00-1.50, 6" 1.50-2.50; 12" HANGING 6.50-7.50.
 CHRISTMAS CACTUS: 4" 1.00-1.50 EACH.
 SALE DAY NEXT WEEK TUES. AT 11.00.

Philadelphia Potato

PHILADELPHIA
DECEMBER 4, 1996

ONIONS AND POTATOES
 ---ONIONS DRY: MARKET ABOUT STEADY US#1 OR GENERALLY GOOD QUAL AND COND UNLESS OTHERWISE STATED. Yellow Globe Type NY 50 lb sks med 5.00-7.00 mostly 5.00-6.00 fr qual 4.00 mstr cntr 20 2-lb mahaks med 5.00-6.00 Spanish Hybrid CO 50 lb sks jbo 9.00-9.50 ID/OR 50 lb sks col 11.00-12.00 jbo 9.00-9.50 mostly 9.00 White ID/OR 50 lb sks jbo fr qual 13.00 NV 50 lb sks jbo 17.00 Red CO 25 lb sks jbo 6.00-6.50 few 7.00 ID/OR 25 lb sks jbo 7.00 NY 25 lb sks jbo 6.00-6.50 med 4.00-6.00
 ---POTATOES: MARKET ABOUT STEADY US#1 SZ A WASHED OR BRUSHED UNLESS OTHERWISE STATED Russet Burbank ID 50 lb ctns 40s 9.00 50s 9.00 60s 9.00 70s 8.00-9.00 mostly 8.50-9.00 80s 8.00-9.00 mostly 8.50-9.00 90s 8.00-9.00 mostly 8.50-9.00 100s 8.00-9.00 mostly 8.50-9.00 Norkotah CD New Brunswick CDOne 50 lb ctns 70s 6.25-6.50 80s 6.25-6.50 90s 6.25-6.50 100s 6.25-6.50 OR 50 lb ctns 70s 5.00 80s 5.00 90s 5.00 100s 5.00 WI 50 lb ctns 70s 7.50 80s 7.50 Round Red CD 50 lb sks sz B 9.00-10.00 MN/ND 50 lb sks 7.00-8.00 mostly 7.50-8.00 sz B 12.50-13.50 mostly 13.00 50 lb ctns creamers 30.00 NY 50 lb sks sz B 9.00 few 10.00 WA 50 lb ctns 16.00 Round White CD Prince Edward Island 50 lb sks 4.50-5.00 mostly 4.75 lge 5.00-5.75 fr qual 4.50 DE 50 lb sks 3.00-3.50 lge 4.00 LI 50 lb sks 3.50-4.50 mostly 3.50-4.25 lge 4.
 00-5.00 PA 50 lb sks 3.25

Lebanon Valley Livestock

Frederickburg, PA
Tuesday, December 3, 1996

Report supplied by Auction
 STEERS: CHOICE 67.25-70.00; SELECT 63.00-66.00; STANDARD 50.00-54.00.
 HOLSTEINS CHOICE 62.50-64.50; SELECT 54.75-59.75; STANDARD 44.00.
 HEIFERS: CHOICE 58.00; SELECT 43.75; STANDARD 38.00-39.00.
 COWS: BREAKING UTILITY AND COMMERCIAL 38.50-41.00; CUTTER AND BONING UTILITY 34.00-36.75; CANNER AND LOW CUTTER 26.00-32.00; SHELLS 24.00 AND DOWN.
 BULLOCKS: NONE.
 BULLS: YG#2 1500-1800 LBS. 37.50-38.00.
 FEEDER CATTLE: STEERS 460-480 HOL STEERS THIN 25.00-32.00.
 CALVES: UTILITY 15.00-20.00.
 FARM CALVES: #1 HOLSTEIN BULLS 100-105 LBS. 81.00-86.00, #2 HOLSTEIN BULLS 95 LBS. 61.00-66.00; #1 HOLSTEIN HEIFERS 100 LBS. 105.00, #2 HOLSTEIN HEIFERS 90-115 LBS. 70.00-77.00.
 HOGS: US#1-3 233 LBS. 54.00.
 SOWS: US#1-3 545-695 LBS. 49.25-50.50; US#2-3 45.00-47.00.
 BOARS: 475-570 LBS. 33.00-37.00.
 GOATS: NONE.

North Jersey Livestock

Hackettstown, NJ
Report Supplied by Auction

Tuesday, December 3, 1996
 CALVES .05-1.25.
 COWS .12-.41.
 EASY COWS .11%-.26% .
 FEEDERS 300-600 LBS. .16-.61.
 HEIFERS .23-.53% .
 BULLS .22-.48.
 STEERS .19-.60.
 HOGS .32-.51.
 ROASTING PIGS EACH 15.00-35.00.
 BOARS .33-.35.
 SHEEP .15-.66.
 LAMBS EACH 18.00-74.00.
 LAMBS PER LB. .19-1.30.
 GOATS EACH 37.00-95.00.
 KIDS EACH 21.00-76.00.
 HIDES EACH 20.00-29.00.
 TOTAL: 777.

Leinbach's Shippensburg Produce Auction

Shippensburg, PA
 Average Prices of #1 Produce
 December 3
 Price Differences are Quality, Size or Days
 Open 10 a.m.
 Report Supplied by Auction
 APPLES: ALL VARIETIES 3.00-5.50 1/2 BU.
 CAULIFLOWER: .55 HEAD.
 POTATOES: 1.75 20 LBS. #1, #1 50 LBS. 3.75-4.00, UNCLASSIFIED 50 LBS. 3.00-3.50.
 SWEET POTATOES: 2.75 1/2 BU.
 TOMATOES: 7.00-12.00 25 LBS.
 TURNIPS: 4.00 1/2 BU.
 WREATHS: 12-16" 5.00-16.50, 18-24"

Forney Longenecker
 Vice President/Financial Consultant
 Commodities

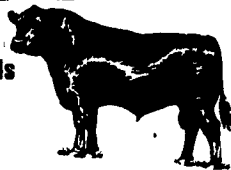
SMITH BARNEY 717-295-8914
 800-441-1997

A Member of TravelersGroup

SMITH BARNEY INC.
 29 East King Street
 Suite 200
 Lancaster, PA 17602-2852

ATTENTION Cattle Feeders, Backgrounders & Cow/Calf Managers!
LANCASTER'S FRIDAY FEEDER AUCTION IS BACK

Walter M. Dunlap & Sons at the Lancaster Stockyards will offer FEEDER CATTLE SALES on FRIDAYS at 12:00 NOON



* After Jan. 1, we will also be accepting consignments of slaughter cattle on

FRIDAYS

* The Wednesday cattle auction will be discontinued after Jan. 1, 1997

Here Today Here to Stay

Walter M. Dunlap & Sons
 Phone: 717-397-5136

Livestock Marketing for the 21st Century

ANNUAL DISCOUNT DAYS
 IN STORE SPECIALS
 CHECK OUR PRICES!
DANIEL'S FARM STORE
 Glandbrook Rd., Leola, PA 17540
 Between Leola & Talmage on Rt. 222
 717-656-6982

2 Full Weeks!, December 2nd thru December 14th!
CASH & CARRY • 10% DISCOUNT ON MOST ITEMS

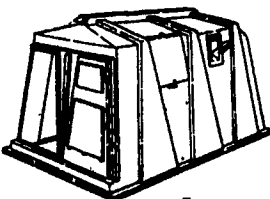


RespiFend MH
M. Hyo Bac
 (Solvay)
 50 Dose
 Compare To RespiPure
\$21.95

North River PAPER TOWELS
 4000
 Towel Case
\$12.50

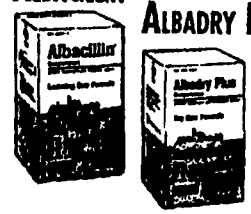
POLYTUFF Calf Hutch

Door Opening
 Top - 14"
 Bottom - 23"
 Height - 36"

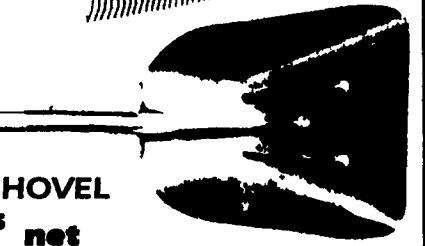


Standard Hutch **\$195.00**
 W/Right Calf Opening Includes Pail Holder

Buy 11 Get 1 Free
 * Plus 1 Pack Lincomix Free
ALBACILLIN
ALBADRY PLUS.
\$13.80



TRUE TEMPER®
Steel Tine Lawn/Leaf Rake
\$4.50



RAZORBACK ALUMINUM SCOOP SHOVEL
 30" & 36" Only **\$28.95** net

