

D8, 8B series, good condition, \$5000; AC 6G track loader, good condition, \$6000; Bucket for AC loader, \$300. 717-758-1734.

Case 586C Construction King forklift. Case 586E Construction King. Both good condition. 717/692-2159 8:30am-9am



87 Case 1455B Loader,
4900 Original Hrs., Excellent Condition
\$26,000
610/383-7710

**Case 602, 1102 Rollers
Demonstrators
Call For Special Pricing**

1989 Case 580K, Cab, standard hoe, excellent condition, less than 2400 hrsPOR
(2) Used 1840 UnloadersPOR
1987 Case 580 K, cab, ext-a-hoe, 4WDPOR
(1) 580 Super E, ROPS, std. hoe, 4 WDPOR
(1/2) Case 1835B UnloaderPOR
Case 360 Trencher w/Backhoe

Used Wheel Loaders

A/C 840, Case W14, Flat FR11,
Kobelco LK500POR

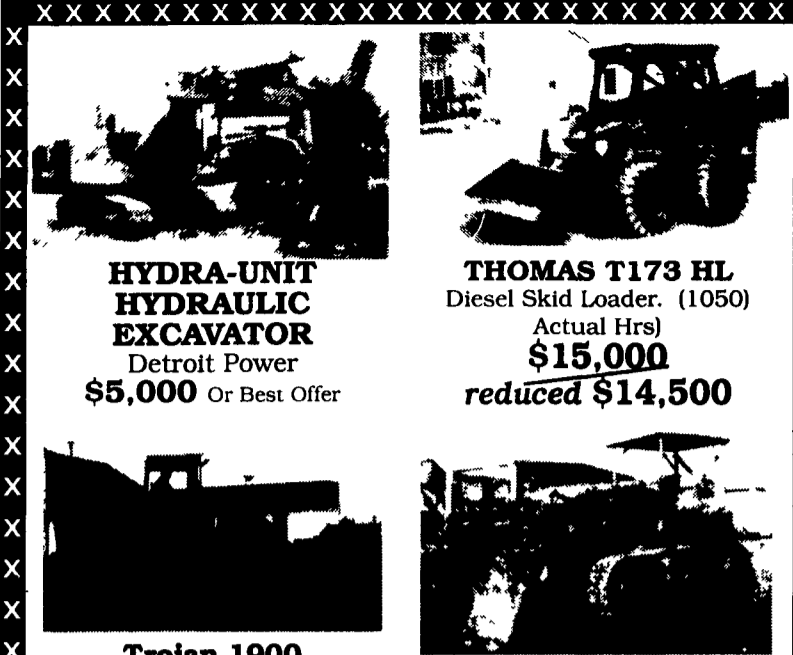
Rental Returns

602B, 1102 Rollers In Stock
Stanley 695 Hammer
Call For Pricing on Rental Return
90 Series Case Excavators

New & Used Trailers In Stock Call For Information

Vernon E. Stup Co.

5859 Urbana Pike Frederick, Md. 21701
301-663-3185



**HYDRA-UNIT
HYDRAULIC
EXCAVATOR**

Detroit Power
\$5,000 Or Best Offer

THOMAS T173 HL

Diesel Skid Loader. (1050)
Actual Hrs)
\$15,000
reduced **\$14,500**



**Trojan 1900
Articulating
4-Wheel Drive Loader. Job
Ready
\$12,500**



**Caterpillar 977K
Crawler Loader
\$12,000**



Not Actual Photo
**FIAT ALLIS FL10B CRAWLER LOADER
\$12,500**

Heavy Equipment Loader Parts, Inc.
10070 Allentown Blvd., Grantville, PA 17028
(717) 469-0039

**FOR NEW AND USED
CONSTRUCTION
EQUIPMENT PARTS
AND ATTACHMENTS**

CALL

H.E.L.P., INC.

(717) 469-0039
1-800-446-0505

Specializing In Caterpillar
Parts also available for Case,
John Deere, IHC, Fiat, Etc.

**HEAVY EQUIPMENT
LOADER PARTS, INC.**

10070 Allentown Blvd.
Grantville, PA 17028

**PARTS PRICED RIGHT
DISMANTLING MOST MAKES
& MODELS**

OF CONSTRUCTION EQUIPMENT

Cat	IHC	Galion
Case	Michigan	Wabco
John Deere	Hough	Dynahoe
Trojan	Terex	Koehring
Drott	Hein Werner	AC/Fiat Allis
	& Others	

Over 650 Machines Dismantled

NATIONWIDE PARTS LOCATING SERVICE

In addition to our own large inventory, we have two computerized parts locator services, nationwide & Canada, ready to serve you. In less than a minute, over 600 used & new parts & equipment suppliers will receive your parts request. Parts are located easily & at substantial savings. Try Our Services.

Save \$\$\$ Parts Shipped Anywhere Direct To You. All Parts Guaranteed

"We Return All Phone Calls"

**BALANDA EQUIPMENT
CO., INC.**

P.O. Box 407 • Route 29 • Palm, PA 18070
Phone: (215) 679-3900
• Fax: (215) 679-8727

TOLL FREE: 1-800-322-8030

ATLAS

USED EQUIPMENT

Cat 966F, s/n 4YG01036, EROPS, w/AC, Cat weigh sys, Michelin 26.5x25 tires 90%, GP bucket w/bolt on edge, auto lube system, 9234 hrs., one owner**\$137,000**
Cat 936E Wheel Loader, s/n 33Z03868, EROPS, GP bucket, 20.5x25 tires**\$57,000**
Cat 920 Loader, s/n 62K7306, cab, 17.5x25 tires 50%, one owner machine, good engine, great for snow removal**\$26,500**
Cat 416 Loaderhoe, s/n 5PC6805, EROPS cab, 4x4, extendahoe 12' and 8' and 30' high bucket, very clean, new rear, new torque**\$27,000**
Cat 235B Excavator, s/n 7WC00495, 3rd valve, rebuilt eng & hyds, 90% u/c**\$55,000**
Cat 235 Excavator, s/n 32K02677, 3rd valve, 90% U/C**\$45,000**
Cat D3B Dozer, s/n 23Y2255, open ROPS, new steering clutches, brakes, batteries, rebuilt starter, 6 way blade, new Cat track links and sprockets**\$26,500**
Cat D3 Dozer, s/n 23Y4036, OROPS, 70% U/C, 6 way blade, cleaned & painted**\$22,000**
Cat D3B LGP Dozer, s/n 6N01145, wide track, 10' blade, 85% u/c**\$20,000**
Cat D6C Dozer, s/n 69U0059, EROPS, 80% u/c**\$29,000**
Cat D6H Dozer, s/n 4Ro01569, OROPS, 80% u/c, drawbar**\$66,000**

Cat 953 Track Loader, s/n 20Z01468, OROPS, GP bucket, 60% u/c, LGP machine, rebuilt engine**\$55,000**
Cat 955K, s/n 85J, GP bucket w/teeth, OROPS, strong engine and trans, straight machine**\$19,000**
Cat 955K Traxcavator, s/n 61H1421, enclosed cab, 80% U/C, GP bit w/teeth, cleaned and painted**\$18,000**
Cat 977L, s/n 11K4554, OROPS, GP bid w/teeth, good U/C, clean running machine**\$25,000**
Cat 120 Motor Grader, s/n 89G2244, cab, lights, hyd. SS, new tires**\$17,000**
Cat 12G Grader, s/n 61M10102, 12' SS blade, cab, 14.00x24 tires, scarifer**\$67,000**
Cat 12F Grader, s/n 89H00625, OROPS, 12' SS blade, 14.00x24 tires, scarifier**\$20,000**
Cat 14G Grader, s/n 96U02703, OROPS, 14' SS bade, 16.00x24 tires, Agtek laser**\$56,000**
Cat 613B Scraper, s/n 38W05659, new chains and buckets, good tires**\$37,000**
Lerol Air Compressor, 85 CFM, on rubber**\$2,000**
Poclairn MCL 300, good Cat U/C**\$8,500**

**DISMANTLING
FOR PARTS**

(1) Cat 235 Excavator, s/n 32K
(4) 225 Excavators, s/n 51U
(1) Cat 988 Loader, s/n 87A
(3) Cat D6H, s/n 46A11000, 46A19000, 46A26000
(1) Cat 920
(1) Proclairn HCL300
(3) Cat 955K, s/n 85J
(1) Cat 966B 75A

**REBUILT/
TAKE OFF UNITS**

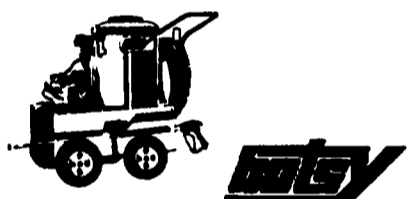
D8H D 342 Engine
225 Engine
225 Hydraulic Pumps and Valves
Many Hydraulic Cylinders
Many Engine Heads
955K Trans and Torque
Rebuilt 3304 engines to fit Cat 963
(2) Cat 963 rebuilt engines w/warranty.
Cat 9588 lift cylinder
Cat EI300 stick cylinder
Cat 225 boom cylinders
(2) 225 rebuilt hydraulic pumps
Cat 977 transmission
Cat 977 torque

ATTACHMENTS

(2) Cat 416 Front Buckets
(1) Mitsubishi 240 30" Rock Bucket
New Cat Excavator Bkts good assort.
(1) Root Rake for Act D6C or D6D \$800
New PC 300 Excavator Bucket, 18" narrow trenching bucket teeth \$4,500 Als Available For Rent
(1) Cat D8H S/Blade
(1) 955 K/L
(1) 910 Buckets
(1) Cat 325 26" bucket w/teeth USED
(4) Set 225 bucket links 2V709 LIKE NEW

**CONSIGNMENT
MACHINES**

(1) E211 Int. Payscraper, 23.5x25 tires
(1) Fiatallis 260B with rebuild engine



**PRESSURE WASHERS &
STEAM CLEANERS**

Atlas Carries a complete Line of Hotsy hot-water & cold water pressure washers... biodegradable pressure-washer detergents.. accessories and spare parts.. hot-water parts washers.. & wash-water treatment systems. Easy-purchase financial plans available for all Hotsy's!

**Authorized
Dealer For:**

**Bodine
Grapples**

Drydene Oil

**Hensley
Teeth**

**For Your Used Parts &
attachment needs**

Call Bob Payne /Kevin Kobus
Tina Dobies /Pat Burns
302/328-0513

FAX 302/328-5033
720 Pulaski Hwy
Rt 40
Bear, DE 19701