

Central U.S.

Carlot

Beef Report

November 26, 1996

Report supplied by USDA

USDA NATIONAL CARLOT BEEF REPORT (INCLUDES MAJOR PRODUCTION AREAS IN THE MIDWEST AND TEXAS) AS OF 3 P.M.

COW AND BULL CARCASS

FOB OMAHA

COMPARED TO NOV. 25TH'S 3 P.M. REPORT: COW AND BULL CARCASSES NOT ESTABLISHED.

COW AND BULL CARCASS

CAF WEST COAST

MARKET FOR WEEK ENDED NOV. 22, 1996.

UT, BRK 2-4 450 LBS. AND UP, LAT-EST ESTB. MKT. 48.50 C.

UT, BNG 1-3 400 LBS. AND UP, LAT-EST ESTB. MKT. 52.50 C.

CUTTER 1-2 350 LBS. AND UP, LAT-EST ESTB. MKT. 53.50-54.00 B.

BULLS YG 1 500 LBS. AND UP, UNQUOTED.

COW & BULL CARCASS

CAF WEST COAST

COMPARED TO LAST WEEK: MARKET FOR WEEK ENDED NOV. 22, 1996.

UT, BRK 2-4 450 LBS. AND UP, RANGE 55.00.

UT, BNG 1-3 350 LBS. AND UP, RANGE 55.00.

BONELESS PROCESSING BEEF/ BEEF TRIMMINGS

124.0 LOADS REPORTED

FRESH LEAN BONELESS BEEF GENERALLY STEADY TO 2.00 HIGHER; 85% FIRM TO 1.50 HIGHER; 65% WEAK. DEMAND AND OFFERINGS LIGHT TO MODERATE. BEEF TRIMMINGS GENERALLY LOWER ON LIGHT TO MODERATE DEMAND AND OFFERINGS.

FOB OMAHA BASIS

90% FR, 40 LOADS, RANGE 78.5-82.0 WT. AVG. 80.91.

90% FZ, 3 LOADS, RANGE 84.5-85.5, WT. AVG. 85.17.

85% FR, 24 LOADS, RANGE 73.5-75.5, WT. AVG. 74.08.

85% FZ, 2 LOADS, RANGE 80.0, WT. AVG. 80.00.

75% FR, RANGE 67.0, WT. AVG. 67.00 C.

75% FZ, UNQUOTED.

65% FR, 5 LOADS, RANGE 63.5, WT. AVG. 63.50.

65% FZ, UNQUOTED.

50% FR 42 LOADS, ANGE 52.00-56.00, WT. AVG. 52.74.

50% FZ, UNQUOTED.

50% BX, UNQUOTED.

92-94, UNQUOTED.

FOB EAST TX & OK

90% FR, 8 LOADS, RANGE 81.0-82.0, WT. AVG. 81.38.

90% FZ, 85% FR, 85% FZ, 75% FR, 75% FZ, 65% FR, AND 65% FZ, UNQUOTED.

CAF NE AREAS

90% FR, 90% FZ, 85% FR, 85% FZ, 75% FR, 75% FZ, 65% FR, AND 65% FZ, UNQUOTED.

CAF WEST COAST BASIS

WEEK ENDED 11/22/96

90% FR, RANGE 80.0-81.0, WT. AVG. 80.80.

90% FZ, UNQUOTED.

85% FR, RANGE 73.0-74.0, WT. AVG. 73.50.

85% FZ, UNQUOTED.

75% FR, RANGE 69.0, WT. AVG. 69.00.

75% FZ, UNQUOTED.

65% FR, RANGE 63.0-64.0, WT. AVG. 63.50.

65% FZ, UNQUOTED.

50% FR, RANGE 56.0-58.0, WT. AVG. 57.08.

50% FZ, RANGE 62.0, WT. AVG. 62.00.

ABCDE AFTER QUOTES REPRESENTS DAYS SINCE LAST ACTUAL MARKET TEST. QUOTES ARE DROPPED AFTER 5 DAYS OF NO TEST OR BEFORE IF THEY NO LONGER REFLECT CURRENT MARKET CONDITIONS.

SOURCE: USDA MARKET, DES MOINES, IA.

Mercer Livestock

MERCER, PA

NOVEMBER 26, 1996

CATTLE 381... PDA ..Compared with last week's sale...Slaughter steers steady to 1.00 higher, cows steady to 2.00 higher.

STEBERS: Choice 1025/1475 lbs. 66.00-73.00, few to 74.25, Select 56.50-66.00, Standard 42.00-54.00.

HOLSTEINS: One High Choice 1395 lbs 72.25, few Choice 1250/1475 lbs. 59.00-67.25, few Select 50.00-53.00.

HEIFERS: One High Choice 1100 lbs 75.00, few Choice 1050/1400 lbs. 63.75-69.75, Select 52.50-61.50, Standard 44.00-48.25.

COWS: Breaking Utility and Commer-

cial 34.00-38.00, couple to 39.50, Cutter and Boning Utility 25.00-34.25, Canner and Low Cutter 22.00-26.75. Shells down to 15.00.

BULLS: one Yield Grade No. 1 1395 lbs. 39.25, few No. 2 975/1605 lbs. 30.50-36.00.

FEEDER CATTLE: STEERS: Medium Frame No 1 450/650 lbs 43.00-51.00, one 61.00 Large Frame No 2 325/825 lbs 22.50-28.50; HEIFERS: few Large Frame No. 1 400/525 lbs. 43.00-46.00, Medium Frame No. 1 400/650 lbs. 27.50-36.00, Large Frame No 2 625/800 lbs 24.50-33.00, Medium Frame No 2 275/675 lbs 24.00-36.00; BULLS: Large Frame No. 1 300/675 lbs. 43.00-57.00, few Medium Frame No. 1 325/850 lbs. 39.50-42.00, few Medium Frame No 2 300/700 lbs 25.00-32.50.

CALVES 102...VEALERS: Standard and Good 80/110 lbs. 16.00-23.00, Utility 55/95 lbs. 5.00-18.00.

FARM CALVES: No. 1 Holstein bulls 90/125 lbs. 60.00-78.00, few to 84.00, No. 2 85/135 lbs. 23.00-43.00; one No. 2 Holstein heifers 95 lbs. 42.50. Few Beef cross bulls and heifers 70/115 lbs. 20.00-38.00.

HOGS 24...BARROWS AND GILTS: few US 1-2 220/260 lbs. 56.50-58.75, few US 2-3 210/220 lbs. 53.25.

SOWS: Couple 420/475 lbs 47.00 & 51.00. BOARS: one 445 lbs 35.00.

FEEDER PIGS 0...

SHEEP 1...No market test.

GOATS 0...

Friend's Stockyard Inc.

Accident, Md. 21520

Report Supplied by Auction

November 25, 1996

STOCK BULLS AND STEERS (200-500 LBS.) 40.00-58.00.

STOCK HEIFERS: 30.00-48.75.

SLAUGHTER STEERS: GOOD TO CHOICE 66.00-71.10; MEDIUM TO GOOD 57.00-65.00, HEAVY CHOICE OVER 1450 LB. 55.00-64.75.

HOLSTEIN STEERS: HEAVY CHOICE 32.00-47.00, LIGHT 34.00-41.50.

SLAUGHTER HEIFERS: GOOD TO CHOICE 61.50-67.75; MEDIUM TO GOOD 50.00-67.25.

BULLS: HEAVY 31.00-41.00, LIGHT 30.00-37.00.

COWS: UTILITY (HOLSTEIN) 30.00-37.00, COMMERCIAL TO GOOD 26.00-30.00, CULL COWS 25.00 AND DOWN.

VEALS: GOOD TO CHOICE 40.00-65.00, MEDIUM TO GOOD 20.00-44.00.

BOB CALVES: 19.00 AND DOWN. HOLSTEIN BULL CALVES — RETURN TO FARM (90 TO 120 LB.)-30.00-84.00.

HOLSTEIN HEIFER CALVES — RETURN TO FARM (100 TO 120 LB.)-UP TO 135.00.

BEEF CROSS CALVES — RETURN TO FARM UP TO 22.00.

HOGS: TOP QUALITY 53.00-60.00, HEAVY 48.00-58.00, LIGHT 30.00-42.00.

SOWS: 35.00-53.00.

MALE HOGS: 24.00-39.00.

LAMBS, LIGHT, UP TO 89.00, FEEDER LAMBS, NONE AVAILABLE.

SHEEP: 18.00-34.00.

LIVESTOCK PRICES ARE ALL GIVEN PER HUNDRED WEIGHT!

Frederick Livestock Auction

Frederick, Md.

November 25, 1996

Report Supplied by Auction

SLAUGHTER COWS: 100 HEAD. UTILITY 33.00-37.75; HIGH DRESSING 38.00-40.00, 1 AT 44.25; CANNERS 26.00-32.00; SHELLY 25.00 DOWN.

BULLS: 6 HEAD, PRICES HIGHER. YG#1 1250 LBS. AT 42.75; YG#2 1500-2170 LBS. 37.00-39.50.

FED STEERS: NO CHOICE BEEF BREEDS. HOLSTEINS LOW CHOICE 1550-1700 LBS. 46.00-49.00; SELECT BEEF TYPE 1200 LBS. AT 55.00; SELECT HOLSTEINS 44.00-46.00.

FED HEIFERS: SELECT 1170 LBS. AT 44.50; CHOICE HOLSTEINS 1500 LBS. TO 46.25.

VEAL CALVES: 260 HEAD. 1 CHOICE 335 LBS. AT 60.00; CULLS 85-110 LBS. 18.00-23.00; 50-80 LBS. 10.00-18.00.

FARM CALVES: HOLSTEIN BULLS 2.00-5.00 HIGHER. #1 95-120 LBS. 65.00-80.00; 90 LBS. 50.00-67.00; #2 80-95 LBS. 25.00-45.00; HOLSTEIN HEIFERS #1 90-120 LBS. 100.00-130.00; #2 80-95 LBS. 40.00-85.00; BEEF X BULLS TO 25.00.

BUTCHER HOGS: 4 HEAD. US#1-2 240 LBS. TO 55.50; 2 AT 365 LBS. 53.50 AND 55.00.

STOCK CATTLE: STEERS MEDIUM AND LARGE FRAME 400-600 LBS. 42.00-52.00; FEW HEREFORDS 32.00-35.00.

HEIFERS: 300-500 LBS. 26.00-39.00.

SHEEP: NONE.

GOATS: 1 LARGE BILLY AT 72.00. PIGS AND SHOATS: NONE.

SOWS: NONE.

BOARS: 195 LBS. TO 39.00.

Grantsville Livestock

Grantsville, Maryland

Report Supplied by Auction

Sat., November 23, 1996

STOCK BULLS AND STEERS 200-500 LBS. 30.00-56.00.

STOCK HEIFERS 30.00-48.00.

SLAUGHTER STEERS GOOD TO CHOICE, NONE AVAILABLE; MEDIUM TO GOOD 32.00-62.00.

HOLSTEIN STEERS GOOD 35.00-47.00; LIGHT 30.00-37.50.

SLAUGHTER HEIFERS GOOD TO CHOICE, NONE AVAILABLE; MEDIUM TO GOOD 42.00-60.00.

BULLS HEAVY 30.00-37.00, LIGHT 30.00-36.00.

COWS UTILITY HOLSTEINS 30.00-36.00, CANNERS 24.00-30.00, CULLS 23.00 AND DOWN.

VEALS GOOD TO CHOICE UP TO 65.00, MEDIUM TO GOOD 35.00-55.00.

BOB CALVES: 20.00 AND DOWN. HOLSTEIN BULL CALVES RETURN TO FARM 90-120 LBS. 40.00-60.00.

HOLSTEIN HEIFER CALVES RETURN TO FARM 100-120 LBS., NONE AVAILABLE.

BEEF CROSS CALVES RETURN TO FARM UP TO 30.00.

HOGS: TOP QUALITY 55.00-61.00, HEAVY 55.00-60.00, LIGHT 50.00-62.00, FEEDER PIGS BY THE HEAD, UP TO 40.00.

SOWS: UP TO 55.00.

MALE HOGS: 25.00-41.00.

LAMBS: 70-85 LBS. 80.00-122.00, 85-125 LBS. UP TO 95.00; CULLS 60.00 AND DOWN.

SHEEP: UP TO 40.00.

GOATS: LARGE 50.00-70.00 HEAD; MEDIUM 20.00-45.00; SMALL 8.00-18.00.

North Jersey Livestock

Hackettstown, NJ

Report Supplied by Auction

Tuesday, November 26, 1996

CALVES .05-1.15.

COWS .18-.37.

EASY COWS .15-.28%.

FEEDERS 300-600 LBS. .10-.67.

HEIFERS .10%-.55%.

BULLS .15-.47%.

STEERS .28-.57%.

HOGS .18-.47.

ROASTING PIGS EACH 20.00-34.00.

BOARS .34-.35%.

SOWS .25-.47.

SHEEP .10-.65.

LAMBS EACH 28.00-82.00.

LAMBS PER LB. .35-1.20.

GOATS EACH 40.00-120.00.

KIDS EACH 2.00-85.00.

HIDES EACH 5.00-13.00.

TOTAL: 794.



Certified Crop Adviser

LOOK FOR THE STANDARD

CCA sets a standard of excellence in agricultural field & crop management. The CCA Program was designed to give you, the farmer, a roadmap to integrity and expertise.

Not everyone that comes in your gate is qualified to give you advice. What makes the Certified Crop Adviser different?

CCA REQUIREMENTS

Education	Minimum of a high school diploma. Reduced experience requirements with college degree.
Experience	4 years crop advising with HS degree; 3 years with 2-year associate degree in agriculture; 2 years with B.S. or higher degree in agriculture.
Exam	National and State CCA exams covering soil fertility, soil & water, pest management and crop production.
Continuing	40 hours of CEU units on a 2-year cycle.
Education Units (CEUs)	Minimum of 10 CEUs per year.
Code of Ethics	Must sign and agree to strict Code of Ethics. (Will loose CCA certification if not adhered to)
References	Two (employer & client)

ASK FOR THE STANDARD. ASK FOR A CCA!



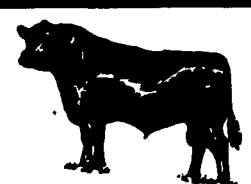
Diffenbach Auction Inc.

100 West Jackson Street • New Holland, Pennsylvania 17557
Office: (717) 355-7253 • FAX: (717) 355-9547

HAY & GRAIN SALE EVERY MONDAY - 10:00 A.M.

WED.	DEC. 4	WINROSS TRUCKS & TOYS	6:30 PM
FRI.	DEC. 13	FARM EQUIP., TRACTORS & FARM SUPPLIES	9:00 AM
FRI.	JAN. 10	FARM EQUIP., TRACTORS & FARM SUPPLIES	9:00 AM
TUE.	JAN. 21	QUILT, CRAFT & BUGGIES	9:00 AM
WED.	JAN. 22	QUILT, & CRAFT	9:00 AM

EQUIPPED FOR AN AUCTION AT YOUR PLACE OR OURS
ALAN DIFFENBACH AUCT.-AU2258-L



WALTER M. DUNLAP & SONS
Lancaster Stockyard
1147 Litz Pike, Lancaster, PA
717-397-5136

FEEDER CATTLE SALE

Wednesday Dec. 18
Noon

Beginning Jan. 3, 1997 -
Feeder Cattle Sales will be held at
NOON on FRIDAYS

Slaughter cattle consignments are also welcome.

LEBANON VALLEY LIVESTOCK MARKET, INC.

1 mile East of Fredericksburg along Rt. 22
Every Tues. at 1:30 pm
Cattle Sale
2nd & 4th Tues. Special
Fed Cattle Sale
Dave Brubaker
(717) 865-2281