

New York Egg Mkt

NOVEMBER 26, 1996

Prices were unchanged. The market tone was fully steady. Demand was good. Supplies of eggs were tight to adequate for large sizes and generally adequate for mediums. The New York state inventory was 18% greater than the previous week and the New Jersey inventory was 26% less than the previous Monday.

PRICES TO RETAILERS, SALES TO VOLUME BUYERS, USDA GRADE A AND GRADE A, WHITE EGGS IN CARTONS, DELIVERED STORE DOOR, CENTS PER DOZEN. RANGE EXTRA LARGE 113-115 LARGE 110-113 MEDIUM 91-94

NY Phil Frozen Eggs

NOVEMBER 22, 1996

Prices were unchanged to higher. The market tone was fully steady to firm with yolks in the strongest position. Demand remained active, and was good. Floor stocks were tight to adequate, and some inter-dealer trading was noted to replenish depleted inventories. Raw material costs were unchanged to higher, and offerings were no more than adequate. Liquid and frozen eggs (ingredients included) processed under federal inspection the week ending November 16, 1996 in the Eastern region were 1% more than last week and 13% more than the same week last year.

WHOLESALE SELLING PRICES (CENTS PER POUND IN 30 LB. CONTAINERS) TRUCKLOTS LTL (MIN. 25 CONT.) RANGE MOSTLY RANGE WHOLE 68-72 69-70 73-77 BLENDS (J) TFEWR 87-105 WHITES 42-45 43-44 45-55 SUGARED YOLKS (MIN 43% SOLIDS) 98-104 99-101 104-107 SALTED YOLKS (MIN 43% SOLIDS) 96-99 96-98 99-100 (J) - WHOLE PLUS YOLK PLUS SWEETENER, GENERALLY 28-32% EGG SOLIDS.

NE Chicken Pts 1&2

NOVEMBER 26, 1996

Trucklot buying activity continued irregular as dealers completed holiday orders. Offerings remained in good balance as dealers balanced limited supplies with

minimal needs. Retail and distributive movement was generally centering around Thanksgiving items. The market tone was cautiously steady.

PRICES PAID PER POUND, ICE PACKED AND CO2 PACKED BROILER/PYRER PARTS, DELIVERED TO FIRST RECEIVERS IN POOL TRUCKLOT AND TRUCKLOT QUANTITIES. ITEM CURRENT NEGOTIATED TRADING* BREAST - B/S (W & W/O TENDERS) 145-150 BREAST - WITH RIBS 69-70 BREAST - LINE RUN 69 LEGS 55-56 LEG QUARTERS (BULK) 41-42 DRUMSTICKS 53-54 THIGHS 52-53 WINGS (WHOLE) 63-64 BACKS AND NECKS (STRIPPED) 12-14 LIVERS (5 POUND TUBS) 35-40 GIZZARDS (HEARTS) 55-60

INCLUDES NEW YORK CITY METROPOLITAN AREA, NORTHERN NEW JERSEY, MASSACHUSETTS, CONNECTICUT, RHODE ISLAND, AND PENNSYLVANIA (NORTHEAST OF HARRISBURG).

National Grain Market

ST. JOSEPH, MO NOVEMBER 26, 1996

The lack of new export sales, profit taking, and increased farmer selling of corn, pressured wheat and corn bids lower. Soybean bids were higher due to carryover fund buying on the board. Wheat 2 to 10 cents lower. Corn 1 to 12 cents lower. Sorghum 2 to 6 cents lower. Soybeans 4 to 5 cents higher. Wheat bids declined as foreign demand slacked off and forecasts for World Wheat production for 1997 and 1998 is to rise to 580 million tonnes. This is up from the 1996-1997 production of 575 million.

Corn bids also slipped lower due to lack of new export demand and in reaction to large US and World feed grain supplies. Some profit taking on the board and increased farmer selling were also a pressure factors. Fund buying on the board was noted in bean pits, pushing bids slightly higher after yesterday's declines. Light farmer selling kept strength in bean bids. U.S. Export Sales: Commodity Tonnage Del date Nothing new to report. Date Change Year ago Truck Bids: 11/26/96 11/25/96 11/28/95 Wheat: Kansas City (HRW, ORD) 4.69 dn 10 5.25 Minneapolis (DNS, 14%) 4.44 up 1 1/2 5.34 3/4 Portland (SW)

4.18-4.21 dn 2-3 5.34-5.36 St. Louis (SRW) 3.90-3.97 dn 2-9 4.92-5.10 Corn, US 2 Yellow: Kansas City 2.73 dn 1-2 3.34-3.35 Minneapolis 2.52 1/4 dn 1 1/2 2.88 3/4 Southern Iowa 2.70-2.72 dn 2-4 3.26-3.27 Omaha 2.63-2.64 dn 9-12 3.09-3.10 Soybeans, US 1 Yellow: Kansas City 7.15 up 5 6.73-6.74 Minneapolis 6.78 up 4 6.39 1/2 Southern Iowa 7.12-7.17 dn 2-1 6.75-6.79 Cent IL Processors 7.20-7.27 up 5 6.79-6.85 1/2 Futures: Kansas City (Dec) Wheat 4.50 1/2 dn 3 1/2 5.05 3/4 Kansas City (Mar) Wheat 4.09 dn 1/4 4.91 Minneapolis (Dec) Wheat 4.23 1/4 dn 3 1/4 4.87 1/4 Chicago (Dec) Wheat 4.13 dn 2 3/4 4.93 Chicago (Mar) Wheat 3.90 1/2 dn 1 3/4 4.91 1/2 Chicago (Dec) Corn 2.73 1/4 dn 1 1/2 3.24 3/4 Chicago (Jan) Soybeans 7.13 up 5 6.77 1/2 Export Bids: Barge or rail, Port of New Orleans or North Texas Gulf. US 1 HRW Wheat, Ord. Protein: 4.94 up 15 1/2 5.51-5.53 US 2 SRW Wheat: 4.51 up 1/4 5.42 US 2 Yellow Corn: 2.98 1/4-3.00 1/4 dn 1 1/2 3.58 3/4-3.61 3/4 US 2 Yellow Sorghum: Rail 4.84 dn 3 6.33 Barge 4.99-5.02 dn 6-3 6.57-6.58 US 1 Yellow Soybeans: 7.51-7.52 up 5-6 7.13 1/2-7.15 1/2

Pa. Grain

November 25, 1996

Report supplied by PDA COMPARED WITH LAST MONDAY'S MARKET FOR SOUTHEASTERN, CENTRAL, AND SOUTH CENTRAL PA: CORN UNEVEN, MOSTLY STEADY TO .07 HIGHER, WHEAT STEADY TO .20 HIGHER, BARLEY AND OATS STEADY TO WEAK, SOYBEANS STEADY TO .25 HIGHER, EAR CORN STEADY TO STRONG. PRICES PAID DELIVERED TO DELIVERS DOCK: ALL PRICES PER BUSHBL, EXCEPT EAR CORN PER TON.

SOUTHEASTERN PENNSYLVANIA CORN NO. 2-Y RANGE 2.70-3.00 FEW REPORTED 3.09, AVERAGE 2.88; WHEAT NO. 2 RANGE 4.29-5.05, MOSTLY 4.40-4.71, AVERAGE 4.60, CONTRACT FOR HARVEST 3.20-3.67; BARLEY NO. 3 RANGE 3.10-3.50, AVERAGE 3.24, CONTRACT FOR HARVEST 1.95-2.00; OATS NO. 2 RANGE 2.15-2.40, AVERAGE 2.33; SOYBEANS RANGE 6.59-6.95, FEW REPORTED 6.40, AVERAGE 6.76; FEW REPORTED GRAIN SORGHUM #2

RANGE 2.69, AVERAGE 2.69; AVERAGE MOISTURE NEW BARCORN RANGE 59.00-78.00, AVERAGE 67.75.

SOUTH CENTRAL PENNSYLVANIA

CORN NO. 2-Y RANGE 2.80-2.85, AVERAGE 2.80; WHEAT NO. 2 RANGE 4.00-4.50, AVERAGE 4.16; BARLEY NO. 3 RANGE 3.00-3.40, AVERAGE 3.16; OATS NO. 2 RANGE FEW REPORTED 2.20-2.80 FEW REPORTED 2.00, AVERAGE 2.43; SOYBEANS RANGE 6.30-6.90 AVERAGE 6.51; AVERAGE MOISTURE NEW BARCORN RANGE 65.00-80.00, AVERAGE 70.43.

SOUTHEASTERN, CENTRAL & SOUTH CENTRAL SUMMARY CORN NO. 2-Y RANGE 2.70-3.00, AVERAGE 2.85; WHEAT NO. 2 RANGE 4.00-4.71, AVERAGE 4.41; BARLEY NO. 3 RANGE 3.00-3.50, AVERAGE 3.23; OATS NO. 2 RANGE 2.00-2.60, AVERAGE 2.30; SOYBEANS NO. 1 RANGE 6.30-6.96, AVERAGE 6.61; AVERAGE MOISTURE NEW BARCORN RANGE 59.00-80.00, AVERAGE 69.04.

CENTRAL PENNSYLVANIA CORN NO. 2-Y RANGE 2.70-2.95 FEW REPORTED 3.07, AVERAGE 2.82; WHEAT NO. 2 RANGE 3.90-4.60, AVERAGE 4.28; BARLEY NO. 3 RANGE 3.00-3.50, FEW REPORTED 3.70, AVERAGE 3.29; OATS NO. 2 RANGE 1.90-2.50, AVERAGE 2.19; SOYBEANS NO. 1 RANGE 6.30-6.70, FEW REPORTED 6.00, AVERAGE 6.40; FEW REPORTED PER HUNDRED-WEIGHT BUCKWHEAT RANGE 10.90, AVERAGE 10.90; AVERAGE MOISTURE NEW BARCORN RANGE FEW REPORTED 56.00-80.00, AVERAGE 70.20.

WESTERN PENNSYLVANIA CORN NO. 2-Y RANGE 2.55-3.30, AVERAGE 3.08; WHEAT NO. 2 RANGE 4.00-4.30, AVERAGE 4.17; BARLEY NO. 3 RANGE 3.00-3.22, AVERAGE 3.11; OATS NO. 2 RANGE 2.00-2.50, AVERAGE 2.25; SOYBEANS RANGE 6.50-6.55, AVERAGE 6.53.

MONTH AGO CORN NO. 2-Y 3.00; WHEAT NO. 2 4.30; BARLEY NO. 3 3.26; OATS NO. 2 2.28; SOYBEANS NO. 1 6.61; FEW REPORTED NEW BAR CORN 67.00.

YEAR AGO CORN NO. 2-Y 3.35; WHEAT NO. 2 4.68; BARLEY NO. 3 2.20; OATS NO. 2 1.79; SOYBEANS NO. 1 6.46; AVERAGE MOISTURE BARCORN 82.81.

Carlisle Livestock Market

Carlisle, Pa. Tuesday, November 26, 1996

Report Supplied by Auction SLAUGHTER CATTLE: STEERS, SELECT TO LOW CHOICE 70.00-72.75; CHOICE HOLSTEINS 59.00-64.50; SELECT 50.25-54.00.

HEIFERS CHOICE 68.25-71.50. COWS: BREAKING UTILITY AND COMMERCIAL 35.00-39.00; CUTTER AND BONING UTILITY 30.00-36.00; CANNER AND LOW CUTTER 24.00-29.00; BIG MIDDLE 32.00-34.00; SHELLY 22.00 AND DOWN.

BULLS: 1035-1165 LBS. 34.50-35.50.

FEEDER CATTLE: FEEDER STEERS MED./LRGE #1 650-900 LBS. 50.50-56.50; LIGHTS/HOLSTEINS/DAIRY TYPES ALL WEIGHTS AND GRADES 22.00-42.75; FEEDER HEIFERS MED./LARGE #1 500-850 LBS. 39.00-44.00; LIGHTS/HOLSTEINS/DAIRY TYPES ALL WEIGHTS AND GRADES 20.00-38.00; FEEDER BULLS MED./LARGE #1 900-1125 LBS. 49.00-51.50, 650-850 LBS. 47.00-52.50; HOLSTEINS/DAIRY TYPES ALL WEIGHTS AND GRADES 32.00-39.50. CALVES: VEALERS STANDARD AND GOOD 20.00-35.00; HOLSTEINS BULLS #1 95-125 LBS. 73.00-79.00; #2 95-125 LBS. 62.50-72.00; HOLSTEIN HEIFERS #1 100-105 LBS. 115.00-127.50; #2 95-105 LBS. 75.00-105.00.

SWINE: HOGS US#1-3 220-280 LBS. 54.00-54.50. SOWS: US#1-3 ACTIVE! 300-600 LBS. 45.00-56.50; THIN/WEAK/ROUGH TO 43.00.

FEEDER PIGS: BY THE HEAD 17-25 LBS. 15.00-23.00; 30-60 LBS. 25.00-37.00.

GOATS: BY THE HEAD, LARGE NANNIES AND BILLIES 56.00-90.00; FLESHY KIDS 35.00-47.50; SMALL KIDS 22.50-30.00.

LAMBS: GOOD AND CHOICE 50-75 LBS. 100.00-132.50, 80-130 LBS. 94.00-115.00. SHEEP: ALL WEIGHTS 30.00.

SALE EVERY TUESDAY 5 P.M. FOR PRODUCE, RABBITS, POULTRY AND EGGS; 6:30 P.M. FOR LIVESTOCK, STARTING WITH CALVES, THEN LAMBS, SHEEP, PIGS, FEEDER CATTLE, BOARS, BULLS, FED CATTLE, COWS, HOGS, SOWS.

BREEDING SCHOOL WILL BE BUYING A LARGE ORDER OF OPEN COWS AT THE TUES., DEC. 3 SALE. NEXT STATE GRADED FEEDER PIG SALE FRIDAY, DEC. 13 AND 27. RECEIVING 7-11 A.M. SALE TIME 1:30 P.M.

NEXT SPECIAL FEEDER/FED CATTLE SALE TUES., DEC. 10 AND 31. SALE TIME APPROX. 7:30 P.M. PEN LOTS OF CATTLE WILL BE SOLD IN ORDER RECEIVED.

EARLY BIRD PENS FOR CATTLE, COWS, AND HOGS CLOSE EVERY TUES. AT 2 P.M.

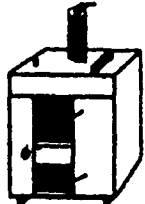
WEDNESDAY MORNING, NOV. 20, HATFIELD BUYING STATION: HIGH 55.25.

Mahoning Outdoor Furnaces

Cut Your Heating Costs With Our Outdoor Furnace

- Standard Model Burns Wood, Coal or Wood by-products
- Multi-Fuel Model Burns Wood, Coal, Oil or Gas
- Corning Catalytic Combustor

Option Available on all Models
Clyde K. Alderfer
Box 246, RD #1
Mt. Pleasant Mills, PA 17853
(717) 539-8456



Adapts to any existing heat system Installation & Accessories Available

Randall G. Renninger

Certified Public Accountant

Specializing in agriculture and construction industries

"We help business people discover ways to cut costs, save taxes, and be more profitable"

Call about our FREE seminars

100 Foxshire Drive, Lancaster, Pa. 17601
(717) 560-5720 Fax (717) 560-5721

CRAIG'S HOG BUYING STATIONS

Four Locations To Serve You!

Receiving Butcher Hogs:

SHIPPENSBURG
Wed. & Sat.
(717) 532-5224

All Stations Open
7:30 am
to
11:00 am

GREENCASTLE
Mon., Wed., Sat.
(717) 597-2315

MARTINSBURG
Saturday
(814) 793-2311

We still Buy Hogs The "Old Fashioned Way"

THOMASVILLE
Wednesday
(717) 792-2248

- No Advance Scheduling
- No Consignment Too Small Or Too Large
- Weighed & Paid For Upon Arrival
- Competitive Prices Paid For Light Weight Hogs, Sows & Boars

For More Information Contact Jeff Craig At (717) 532-5224



Hay And Straw Sales Will Start At 10 A.M. Every Wed.

GOOD'S AUCTION

11 North Maple Ave.
Leola, PA 17540
717-656-8911
717-656-9558

Northeast Agri Systems Your Authorized Distributor

- | | |
|---------------------------|-------------------|
| CHORE-TIME | Shenandoah |
| • Cage Systems | • Space Heaters |
| • Poultry & Swine Feeding | • Incinerators |
| • Bins & Augers | • Brooders |
| | • Nests |

HIRED-HAND Agricultural Heating and Ventilation Systems
HEATERS AND CONTROLS

Poultry, Dairy & Swine Buildings & Equipment

TOLL FREE CUSTOMER SERVICE NUMBER: 1-800-673-2580

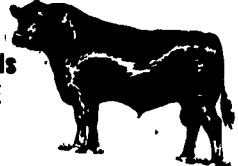
Northeast Agri Systems, Inc.
Flyway Business Park
139A West Airport Road
Lititz, PA 17543
Ph (717) 569-2702
1-800-673-2580

Delmarva Store
305 University Ave
Federicksburg, MD
(Formerly Long Lumber)
1-800-738-6361

ATTENTION

Cattle Feeders, Backgrounders & Cow/Calf Managers!
LANCASTER'S FRIDAY FEEDER AUCTION IS BACK

Walter M. Dunlap & Sons at the Lancaster Stockyards will offer FEEDER CATTLE SALES on FRIDAYS at 12:00 NOON



* After Jan. 1, we will also be accepting consignments of slaughter cattle on

FRIDAYS

* The Wednesday cattle auction will be discontinued after Jan. 1, 1997

Here Today Here to Stay

Walter M. Dunlap & Sons
Phone: 717-397-5136

Livestock Marketing for the 21st Century