

1986 Ford F-250 pick-up, 6.9 diesel, good running cond, auto trans, \$3,500 (908)359-5934

1987 Ford 9000 10 wheeler, 350 Cummins engine, excellent condition 717-428-1219

1987 Mack MS 250, turbo charged diesel, 72,000 mi, 24' grove rollback, hyd winch, 32,000 GVW, air brakes Call (410)877-9889

Ford truck crane, 1985, F-800, 22,740 miles, Pitman crane 21,000 lb. 3 stage, immaculate, \$35,000. Call (610)944-0476

For Sale. 1982 Walker 5800 Gal. Farm pickup milk trailer, 42 ft (717)867-2995

Iveco 1-ton truck, excellent condition, cab, chassis, new clutch, \$1800 609-965-6164.

(2) 1989 Peterbilt trucks, \$27,000/ea, 1988 Peterbilt, \$22,000. All w/400 Cummins, 8 speed trans., air ride extension; 1981 Mack R Model tractor, 300, AC, Power steering, 6sp, air shift, \$6500; (2) Vacuum tanks, 3000-5000 gallon, good for liquid manure trucks. 610-286-5172.

AM General Hummer 93 truck Mock 1, 66,000 miles, 6.2 diesel, auto, AM/FM cass. stereo, skid plates, HD trailer hitch, \$28,000. 717/535-4056, 717/535-5409.

C65 Chevy truck, tandem axle, excellent shape, painted 4 years ago, shed kept, low miles. Call after 6:30pm, (717)966-0883.

1985 Peterbilt Tractor, good condition, \$12,000 OBO. 610/967-2181.

1986 Chevy Crewcab Du-ally, River Oaks Custom, factory rebuilt 454, plus AC, AT, PS, PB, PW, PL, cruise, tilt, AM/FM stereo, gooseneck and Class III hitches, outstanding condition, \$10,000 OBO. 610-489-0680.

FOR SALE: 1993 Dodge 350 dually extended cab, diesel, equipped w/ sleeper, 5th wheel, gooseneck and bumper hitches, \$1,450. (814)743-5216.

FOR SALE: 1985 Ravens dump 10-1 spread, air, good unit, new brakes. 717-458-4990.

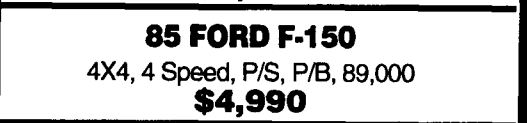
ENGINES FOR SALE: Mack 285 237 Cat 3208 & DT 466 Int. DETROIT: 6V53 318, 8V92; V671 & 671. Gas Engine: Ford 391; 361; Chevy 366; 427; 350. Many other parts at reasonable prices. HAP'S TRUCKS & PARTS 1-800-839-3338



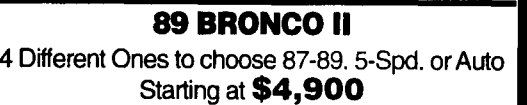
85 FORD RANGER 4X4 Pickup
V-6, 5 speed, PS, PB, AC
\$3,990



87 FORD F-150 4X4
4 Speed, P/S, P/B
\$5,990



85 FORD F-150
4X4, 4 Speed, P/S, P/B, 89,000
\$4,990



89 BRONCO II
4 Different Ones to choose 87-89. 5-Spd. or Auto
Starting at **\$4,900**

MILLERS' IMPORTED CAR SERVICE
Route 15 North, Dillsburg, PA
717-432-3064

Huntingdon Equipment

Rentals Available **GOOD USED EQUIPMENT**

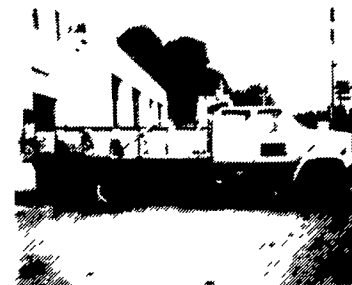
Huntingdon Valley, PA • 215-672-9667 • 1-800-543-3833 • Eddie



Vermeer M-470 Trencher with backhoe. This is one of six units we have all ready to work Starting at \$4,500.



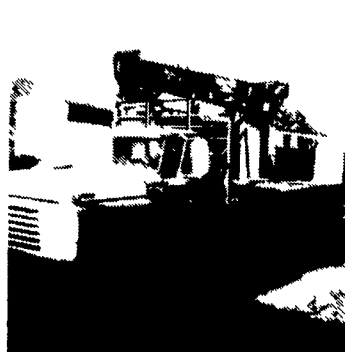
1985 F-600 8.2 Diesel, Auto, 5 Man Cab, Utility With Rollup Door On Rear, Clean, Low Mileage, 1 Left Priced To Sell!



1986 Chevy 5 Man Cab Dump, 3208 Cat - 5/2, Air Brakes Dump with Lift Gate Dump 14' Long, GVW 34,000 pounds.



Pitman Boom with jib 15,000 pounds cap - 4 outriggers. Sale Price \$8,250.00 Won't Last Call Now!!



Need A Lift? We Have A Large Selection Of Boom Trucks Up To 14,000 lbs. Cap Some With Post Diggers.



Bucket Trucks 28' to 65' Gas and Diesel. Call For Details.

DIGGER DERRICKS/AERIAL BUCKETS/UTILITY EQUIPMENT

WE HAVE YOU COVERED

\$100 TRAVEL EXPENSE VOUCHER
Pay To The Order Of _____
Good for travel expense if you live more than 30 miles from Fred Beans Chevrolet Oldsmobile with the purchase of a new or pre owned car or truck. One voucher per customer only. Must be authorized by your salesperson. A check for \$100 will then be mailed to you.
Salesperson Authorization _____

HEAVY DUTY • LIGHT DUTY • DUMP BODIES • STAKE BODIES • UTILITY BODIES • VANS • CHASSIS CABS • CUBE TRUCKS



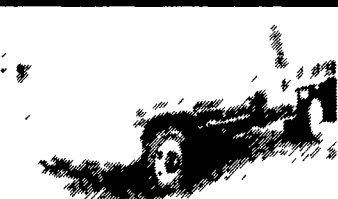
'96 CHEVY C3500
12' Dumping Stake
570 Vortec, 4.10 rear, auto trans, 11,000 GVW, HD trans cooler. #60999
\$22,795



'95 CHEVY CREW CAB
6.5L Turbo Diesel
Silveardo, auto trans, 10,000 GVW, 9' dumping stake body. #7362
\$25,995



'96 CHEVY K3500
8.5' Meyer Snow Plow
Air cond, 12,000 GVW, 5700 Vortec, locking diff, auto trans, 8' Heil Manuader dump #61146
\$28,995



'96 CHEVY C3500
L-Pack 2/3 Yard Dump
5700 Vortec, 5-speed, locking diff, 4.10 rear, 11,000 GVW. #60982
\$21,995



'96 CHEVY C3500
Cab + Chassis
Vortec 5700, auto trans, locking diff, 11,000 GVW, 4.10 rear. #60931
\$16,995



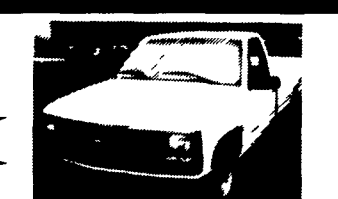
'96 CHEVY C3500
12' Stake Body
5700 Vortec, auto trans, air cond, 4.10 rear, 11,000 GVW, HD trans cooler #60742
\$19,995



'96 CHEVY K3500
6.5L Turbo Diesel
Air cond, 12,000 GVW, locking diff, auto trans, 4.10 rear, 8' Heil dump body #61028
\$28,995

WE'LL DELIVER YOUR TRUCK ANYWHERE IN THE USA!
OVER 200 TRUCKS AVAILABLE

1 Tons • 3/4 Tons • 1/2 Tons
Diesels • Blazers (Full Size & S-10)
Suburbans (2-WD & 4-WD) Vans
Conversions, Cargos, Astros, APVs, & More!



'95 CHEVY C2500
Vortec 5000, 5-speed, 7200 GVW, air cond. #60695
\$14,995



'95 CHEVY K3500 4x4
8.5' Galion Dump
350 V8, 5-speed, snow plow prep, 12,000 GVW, 4.10 rear #7376
\$22,995

Prices include customer choice commercial coupon

FRED BEANS



Call Our Commercial Truck Dept...
(215) 348-3586
800-341-3232

Route 611 North, Doylestown, PA

Visit our new website at www.fredbeans.com