



NOV. 25-DEC. 1, 1996
FIRST SUNDAY IN ADVENT, DEC. 1.

THANKFUL FOR MORE SHOPPING?

Did you know that Thanksgiving was once moved to create more shopping days before Christmas? It's true! In 1939, President Franklin D. Roosevelt changed Thanksgiving to the third Thursday in November to give the economy a boost. In 1941, the president returned Thanksgiving to the fourth Thursday. If you're kicking off the season with a shopping trip, our consumer trend watchers say popular items for the next year will include bamboo flatwear, frames, and furnishings; khaki clothing, herb gardens, and cheesecakes. Hawaiian shirts, clunky footwear, velvets, suedes, and chenille fabrics are also in



A woman is always buying something.

- Ovid (43 B.C.-A.D. 18)

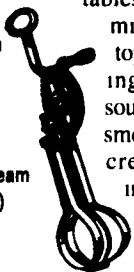
TIP OF THE WEEK

Bring your recycled shopping bags with you on shopping sprees, to reduce waste.

6-HOUR CHEESECAKE

Crust & Topping:
1-1/3 cups fine graham cracker crumbs
1/4 cup finely chopped walnuts
1/2 teaspoon cinnamon
1/2 cup melted butter

Filling:
2 eggs, well-beaten
16 ounces softened cream cheese (not whipped)
1 cup sugar
1/4 teaspoon salt
1/2 teaspoon vanilla
1/2 teaspoon almond extract
2 cups sour cream



Mix crust ingredients and press into a 9-inch pie pan, reserving 3 tablespoons of the crumb mixture to sprinkle on top. Combine all filling ingredients except the sour cream, beating until smooth. Fold in the sour cream by hand. Pour into the crust. Sprinkle with topping. Bake at 375° F until set, about 35 minutes.

Cool and chill about 4 to 5 hours.

Makes 8 to 10 servings.

The OLD FARMER'S WEATHER PROVERBS



If it rains the first Sunday of December, it will rain for a week.

If the breast-bone of the Thanksgiving fowl turns red, blue, black, purple, or has dark spots, it means a cold and stormy winter. If purple tips to the bone, it's a sure sign of a cold spring.

OK City Feeder Cattle

OKLAHOMA CITY, OK
NOVEMBER 20, 1996

Compared to last Monday: Feeder steers and heifers steady. Steer and heifer calves steady to 2.00 lower. Demand moderate for all classes. Quality of feeder supply plain to average with favorable flesh conditions. Quality of calves average, end attractive with improved flesh conditions. Bloom is off the majority of calves which are now in slightly fleshy to thin condition and more attractive to buyers. Slaughter cows 2.00-4.00 higher. Slaughter bulls steady. Demand moderate for reduced receipts. Country buyers aggressive for grazing cows either open or bred. 670 cows and bulls sold with 60 percent to packers. Receipts this week 15,400; last week 16,925; last year 9,950. Supply consisted of 43 percent yearlings and calves over 600 lbs; 53 percent calves under 600 lbs; 4 percent cows and bulls. Prices follow with weighted average weight and price in parenthesis. Feeder Steers: Medium and Large 1 Calves: 300-400 lbs (350 lbs) 73.00-80.00 (77.31); 400-500 (450 lbs) 66.00-74.00 (70.58); 500-600 lbs (550 lbs) 64.75-72.00 (67.83); 600-700 lbs (650 lbs) 61.00-66.00 (63.42); 700-730 lbs (726 lbs)

64.00-65.00 (64.74); Yearlings: 600-700 lbs (650 lbs) 66.00-71.00 (68.10); 700-800 lbs 67.00-70.50 (68.86); 800-900 lbs (850 lbs) 65.00-69.00 (67.48). Feeder Heifers: Medium and Large 1 Calves: 350-400 lbs (383 lbs) 54.00-59.50, very thin 64.25 (58.45); 400-500 lbs (450 lbs) 53.75-62.00 (57.36); 500-600 lbs (550 lbs) 54.25-61.00 (56.85); 600-650 lbs (615 lbs) 55.50-59.75 (59.20); Yearlings: 575-600 lbs (583 lbs) 59.25-63.00 (61.70); 600-700 lbs (650 lbs) 59.25-65.00 (61.93); 700-800 lbs (750 lbs) 59.25-63.25 (61.81); 800-850 lbs (823 lbs) 55.75-60.50 (57.50). Slaughter Cows: Average dressing Cutters 25.50-28.00, Utilities 29.25-32.00; high dressing Cutters 28.00-32.00, Utilities 31.50-34.50; low dressing Cutters 23.00-25.50, Utilities 27.25-29.50. Canners 18.50-23.00, light weights or shells 15.50-19.00. Estimated dressed cost at Oklahoma National Stockyards: Cutters 57.85; Boning Utility 60.85; Breaking Utility 59.95; Canners 52.20. Bulls 65.90. Slaughter Bulls: Yield Grade 1 1350-2000 lbs average dressing 35.25-38.25; high dressing 39.00-40.00, high dressing/high boning indiv 42.75; low dressing 31.00-35.75. Replacement Cows: Pretested for Bangs, pregnancy, and age Medium and Large 1 single head sales: 2-4 yr old 850-1025 lbs 6-7 months bred avg quality 350.00-375.00; hi quality

440.00-475.00; 6-8 yr old 900-1050 lbs 2-7 months bred avg quality 335.00-375.00; hi quality 400.00-425.00; 9 yr old 1000-1100 lbs 7 months bred avg quality 325.00-370.00.

New Holland Dairy

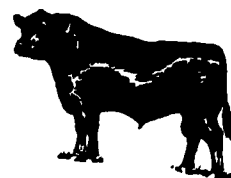
New Holland Sales Stables
Wednesday, November 20, 1996
Report supplied by auction
DAIRY COWS 140, HEIFERS 111, 11 BULLS. GOOD COWS STEADY, BALANCE CHEAPER.
LOCAL FRESH 400.00-1050.00.
FRESH HEIFERS 610.00-1200.00.
LOCAL SPRINGERS 675.00-900.00.
UPSTATE LOADS FRESH 1050.00-1400.00.
LOAD OF CANADIAN HERDS 410.00-1025.00.
SPRINGING HEIFERS LARGE 960.00-1150.00, SMALL 610.00-910.00.
SHORTBRED HEIFERS 400.00-760.00.
REGISTERED HEIFERS 600.00-1100.00.
OPEN BREEDING AGE HEIFERS 600.00-710.00.
SMALL OPEN HEIFERS 325.00-560.00.
BULLS PUREBREDS 550.00-725.00.



THE LEADERSHIP ADVANTAGE[®]
FFA

PREMIER LEADERSHIP
Personal Growth
CAREER SUCCESS

Through Agricultural Education



WALTER M. DUNLAP & SONS
Lancaster Stockyard
1147 Lititz Pike, Lancaster, PA
717-397-5136

FEEDER CATTLE SALE

Wednesday Dec. 18
Noon

Beginning Jan. 3, 1997 -
Feeder Cattle Sales will be held at
NOON on FRIDAYS

Slaughter cattle consignments are also welcome.

WANTED

SOW PRODUCERS

• Existing Farms • New Construction

WE OFFER:



GUARANTEED PRICE

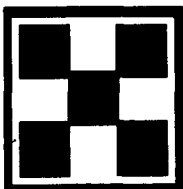
5 to 7 Year Contracts



RECORDKEEPING AND ON FARM SERVICE

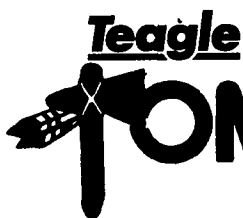


FINANCING AVAILABLE
to Qualified Producers



PURINA MILLS, Inc.
800-873-5300

Manufacturing Facilities: Lancaster, Harrisburg, Hagerstown (2/97), Wyalusing and Knoxville



BALE SHREDDERS

VERSATILE

- Chop and feed the wettest silage bales.
- Chop dry hay, straw, and corn stalks
- Discharges to either, or both sides for free stall bedding
- Optional hose attachment for hard to reach areas and mulching application
- Models available to handle all sizes of round and big square bales



MANEUVERABLE

- 3 point mounted to operate in close quarters

EASY TO OPERATE

- Load bales with 3 point bale handler, no loader required.
- Simple durable construction
- Operate with as little as 60 hp

MULTIPLE BENEFITS

- Improved Palatability, less waste
- Feed silage bales directly into bunk or fenceline feeders. Pre-chop material for TMR mixer.
- Improved absorption ability of bedding material, less bedding required.
- Clean comfortable beds.
- Easier handling of manure with chopped material



CUMMINGS and BRICKER, Inc.
WHOLESALE DISTRIBUTORS

100 Stover Drive
Carlisle, PA 17013
717/249-6720

100-120 Lehigh Ave. - P.O. Box 928
Batavia, New York 14021-0928
716/343-5411

Serving Farmers Through Farm Equipment Dealers Since 1961