

Maryland Plans Pleasure Horse Seminar

The University of Maryland Cooperative Extension Service (UMCES) in Carroll, Baltimore and Howard counties is pleased to announce the program for the 8th Annual Maryland Pleasure Horse Seminar.

This year's seminar includes changes suggested by previous years' participants which include a fourth session that will repeat selected presentations, an expanded trade show and on-farm demonstrations.

The 1996 Maryland Pleasure Horse Seminar will be held on December 14, 1996 at the South Carroll High School, Route 26, Winfield, Md. Participants have the opportunity to choose three different seminars from the nine offered, plus the chance to attend selected repeat seminars or one of the on-farm demonstrations.

The registration desk and commercial exhibit area opens at 8 a.m. Many exhibitors will be on hand to "show and tell" about products and services available to horse owners.

In addition to commercial exhibitors, UMCES will have an Internet Demonstration and Poisonous Plant Exhibit. Seminar sessions begin at 9 a.m. with keynote speaker, Amy W. Mann, Director of Health and Regulatory Affairs, Trails and Recreation Issues, the American Horse Council, discussing "Issues Affecting the National Equine Industry."

Seminar sessions will follow throughout the day and adjourn at 4 p.m. Maryland Cooperative Extension Service programs are open to all citizens without regard to race, sex, handicap, religion, age or national origin.

Seminar choices offer a variety of topics including the following: Current Issues for Maryland Horse Owners: A Panel Discussion moderated by Dr. Malcolm

Commer Jr., University of Maryland Cooperative Extension Service. Dr. Kimberly B. Fincher, who is in private practice in Chestertown, MD, will be speaking on Basic Management of the Broodmare and Management of Newborn Foals. Dr. Ginger Rich, Rich Equine Nutritional Consultants, Duluth, GA will discuss Basics on Feeding Your Horse and Prudent Penny Pinching.

Drs. Robin Keyser and Les Vough, University of Maryland

Extension Specialists, will provide guidelines for Matching Hay Quality to Nutritional Needs. Dr. Carol Swandby, VMD and Dr. Malcolm Commer, will provide ideas on Basic Equine Health Care Practices and Costs. Today's Fencing Options will be presented by Wayne Harrar, Southern States Cooperative. Ms. Crystál Brumme, Publisher and Editor of the Equiery magazine and Dr. Malcolm Commer will offer suggestions on Using Advertisements to Buy or Sell a Horse.

Concurrent On-Farm Demonstrations are Wound Care by Dr. Stephen Sears, DVM at VA-MD Regional College of Veterinary Medicine, Essentials in Hoof Care by Mr. Gary Faulkner, President of Maryland Farriers Association, and Fitting Equine Equipment by Mr. Robert Shirley, Extension Agent, Carroll County. These demonstrations require pre-registration and space is limited.

Advanced registration is required. The cost for the entire day including seminar, lunch and ma-

terials is only \$15 per person (Farm Demonstrations are an additional \$10 per person). In addition, day care is available for children ages one to eight for a small fee. To assure your place at this seminar, register before December 6th by contacting the Howard County Cooperative Extension Office at 410-313-2707.

The Maryland Cooperative Extension Service's programs are open to all citizens without regard to race, color, sex, handicap, religion, age or national origin.

Farmers Rally For Reform Of National Cheese Exchange

GREEN BAY, Wis. — Dairy farmers from across the nation rallied outside the National Cheese Exchange (NCE) in Green Bay, Wis., as cheese prices dropped another 9 cents per pound.

It was the sixth consecutive week cheese prices have dropped on the exchange, according to news release from the National Farmers Union.

"What transpired here today is very important," said rally participant Walter Kessler, a dairy producer from Galt, Calif. "I lost 90 bucks per day due to today's drop, which is \$2,700 for the month. It wasn't fun watching it."

Kessler, along with television crews from four broadcasting organizations were permitted to watch the trading.

Less than 1 percent of all cheese in the nation is traded at the NCE during one-half hour sessions Friday morning, yet it sets the price for 90 percent of the nation's cheese, which heavily influences producer milk prices.

Producers say the NCE drop is illogical given the fact that the U.S. has 1.3 million fewer cows

than it did in 1995. Producers believe and recent studies by the University of Wisconsin indicate that large traders have the ability to manipulate the NCE to their advantage.

Among the approximately 100 producers rallying Friday were members of Farmers Union, the National Farmers Organization, the National Family Farm Coalition and Farm Bureau. In addition to participation by California milk producers, producer groups from across the nation sent news releases and letters supporting rally organizers.

"Producer organizations from Texas to Minnesota and all points in between are behind this effort to reform the National Cheese Exchange," said Wisconsin Farmers Union president and rally organizer Bill Brey. "Milk producers are united."

Brey added that the issue is one that should concern not only farmers. "Consumers should be asking themselves why they are still paying as much as \$3 for a gallon of milk when producer prices have fallen by nearly 35 percent," he

said.

National Farmers Union is a general farm organization representing nearly 300,000 family farmers and ranchers nationwide. NFU serves its membership by

assisting with education, by providing stimulus and know-how for farmer-owned cooperatives and by presenting the organization's policies to lawmakers at the local, state and national levels.

Districts Appoint Director

HARRISBURG (Dauphin Co.) — Robert Kaufman, president of the Pennsylvania Association of Conservation Districts (PACD), has announced the appointment of Susan Fox as the association's executive director.

The PACD is a nonprofit organization dedicated to supporting the commonwealth's 66 conservation districts in their efforts to promote the wise use of natural resources. Fox replaces Kurt Leit-hoff, who accepted a position with the Pennsylvania Department of Conservation and Natural Resources.

Fox recently returned to the United States from Canada where she worked for the past 10 years. She brings more than five years of

association experience to the PACD. In Canada, she managed the New Brunswick Hog Marketing Board and the pork producers association. Most recently, she coordinated an export development program for the Canadian Meat Council (the national association of federally inspected meat processors in Canada).

In addition to her association experience, Fox has also worked for the provincial department of agriculture, a management consulting firm and the farm credit banks. Fox has a bachelor of science in agriculture, magna cum laude, from West Virginia University and a master of science in agricultural economics from the University of Tennessee.

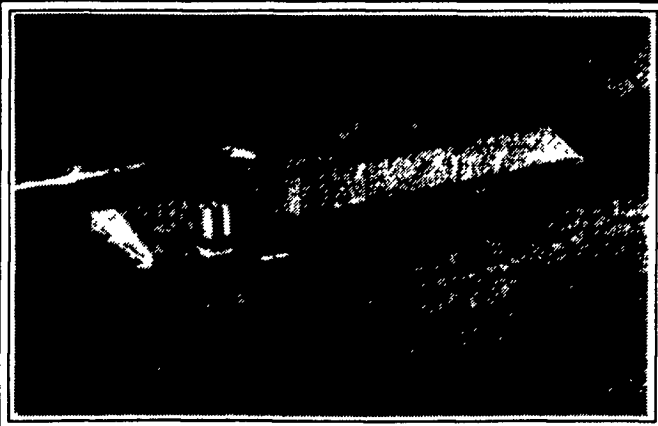
Improve Your Cash Flow with Guaranteed Monthly Payments

1,000 - 2,000 Head Finishing Facilities or 1,000 - 4,000 Head Segregated Early Wean Facilities

Contracts available for existing or new buildings within 75 miles of Elizabethtown, PA



419 West High Street
Elizabethtown, PA 17022-2189



Excellent Pork Production Facilities



Quality Animals & Service

White Oak Mills Can Contribute to Your Total Agricultural Profitability . . .

- Modest Labor Requirements
- Building Design, SEW & Finishing Programs
- Quality Feeder Pigs, Feed and Service
- Positive Cash Flow & Depreciation Write-Offs
- Superior On-Farm Technical Support



Quality Products & Service
Working For You

Call Toll-Free (800) 468-5524