

OCU
dhia

David A. Bigelow,
Training Coordinator
Call 1-800-DHI-TEST, fax (814) 865-3927
Web site <http://www.dhia.psu.edu>
Pennsylvania Dairy Herd Improvement Association
DHIA Service Center, Orchard Road, University Park, PA 16802

Pa. DHIA Advisory Committee, Field Staff Meet

DAVID BIGELOW
Training Coordinator
STATE COLLEGE (Centre Co.) — The advisory committee and field staff of Pa. DHIA recently met in State College at the Best Western to be updated on a number of upcoming projects. Among this was being updated on National DHIA's new environment. Pa. DHIA recently completed its annual fall conferences. This year employees from each region attended one full day of training in State College at the Days Inn, during the week of Oct. 14-18. These conferences were infor-

mative in the fact that marketing strategies, payroll update, lab concerns, field talk and all the computers received an update to make the program more user friendly. Having the conferences in State College allowed the staff to be more accessible to the technicians each day of the conference week. Pa. DHIA holds three conferences a year, along with monthly mini meetings, to continually update and educate the technicians on any changes. Please feel free to contact Pa. DHIA at 1-800-344-8378 if we can assist with your dairy operation.

Average Farm Feed Costs For Handy Reference

To help farmers across the state to have handy reference of commodity input costs in their feeding operations for DHIA record sheets or to develop livestock feed cost data, here's last week's average costs of various ingredients as compiled from regional reports across the state of Pennsylvania. Remember, these are averages, so you will need to adjust your fig-

ures up or down according to your location and the quality of your crop.

Corn, No.2y — 2.94 bu., 5.26 cwt.
Wheat, No. 2 — 4.15 bu., 6.93 cwt.
Barley, No. 3 — 3.19 bu., 6.82 cwt.
Oats, No. 2 — 2.27 bu., 7.07 cwt.
Soybeans, No. 1 — 6.34 bu., 10.61 cwt.
Ear Corn — 66.41 ton, 3.32 cwt.
Alfalfa Hay — 138.75 ton, 6.94



The staff of the Pa. Dairy Herd Improvement Association meets with a representative from National DHIA to review the policy changes to go into effect Jan. 1. From the left, back row, is Dean Amick, Pa.DHIA director of field operations; Jill McGregor, National DHIA director of field operations; Diane McIlwain, Region 3 manager; and David Bigelow, training coordinator. In the back row, from the left, is Dave Slusser, Pa.DHIA manager; Larry Hay, Region 2 manager; Scott Williams, Region 5 manager; Dean Aden, Region 1 manager; and David Shenk, Region 4 manager.

DHIA Code Of Ethics Effective Jan. 1

DAVID BIGELOW
Training Coordinator
STATE COLLEGE (Centre Co.) — National DHIA is in the process of creating a new environment in the DHIA world effective Jan. 1. The "Code of Ethics" will replace the rules.

However, the real direction for DHIA in the coming years may not be a great deal different from the direction of the old DHIA.

Jill McGregor, director of field services at National DHIA, recently met with the Pa. DHIA field staff in State College to update and answer questions concerning the upcoming changes at the national level.

cwt.	Mixed Hay — 135.00 ton, 6.75
cwt.	Timothy Hay — 131.75 ton, 6.59 cwt.

National DHIA recognizes the fact that collecting and processing data and turning it into information that is useful to the membership is its main concern. However, this same date fulfills many other needs in the dairy industry such as utilization by the USDA-AIPL for genetic evaluations. In addition, records contributing to the national database are used for other research, education and genetic performance awards.

The ability to fulfill these important needs in an ever changing environment is essential to the future for Pa. DHIA.

Beginning January 1997, DHIA will embark on a new approach to enforcement by replacing NCDHIP rules with record standards and a code of ethics. Each component plays an important role for shifting the enforcement responsibility from DHI alone to our producers and allies.

As members of Pa. DHIA, you will have the opportunity to be updated by staff at the annual banquets as well as through the use of news releases.

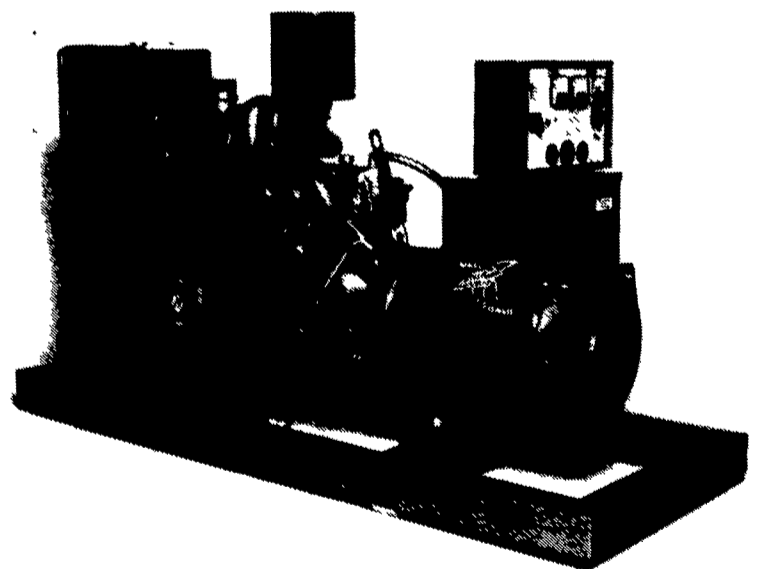
Please feel free to contact a Pa. DHIA technician, or call the Pa. DHIA state office at 1-800-344-8378, if we can help answer any questions you might have regarding National DHIA's Code of Ethics or if we can help with your dairy operation.

Now Open

Nutrena Feeds is now open and fully operational in Lebanon, Pennsylvania. We can help you meet your goals for improved farm profits:

- On-Farm nutritional consulting .
- Custom nutrient design for every farm.
- Technology backed by extensive research.
- Personalized service.

Give us a call today at 1-800-613-4459



**DEPENDABLE STANDBY POWER
PRIME RATE FINANCING NOW AVAILABLE**

MAXI POWER

Phone (717) 273-4544 • (800) 272-6294
Fax: (717) 273-5186

MAXIPOWER, LLC • 440 Schaeffer Road • Lebanon, PA 17042-9753