



(Continued from Page A10)

Editor:

duce milk?

I would like to touch on another subject within the dairy industry. We consumer's see many young cattle knee-deep in pure s--- in the so-called feed lot, around the big bale feeder. How can we be sure the cows are kept any better? Oh, because of the milk inspector. Yeah, maybe for me, but what about the 90% to 95% of consumers who never saw the inside of a dairy operation? Is it any wonder why milk consumption is off? Also, why the animal activists are a growing group? Enough said!

Clarence E. Scheaffer
Newport

Several Farm Organizations across the United States are joining together in an attempt to prevent a collapse in prices paid to all dairy farmers.

As a result of the dramatic decline in the national cheese prices of nearly 40¢ per pound, prices paid to area dairy farmers could be reduced from the September price by nearly \$4.00 per cwt. (40¢ per gallon).

Representatives from several states organizations such as Pro Ag, Rural Vermonter, Empire Farm Alliance, New England Milk Producers, are joining forces with National Groups such as the National Family Farm Coalition,

N.F.O., National Farmers Union, and others in the endeavor to ward off the possible disastrous prices paid to dairy farmers.

The groups, both individually and collectively will be urging the Secretary of Agriculture Dan Glickman to floor the basic formula price at \$15.00 per cwt. until such time as a realistic method can be developed to price raw milk at the farm level.

The \$15.00 per cwt. Basic Formula price should return a blend price to dairy farmers of at least \$15.50 per cwt.

Also, the groups are planning meetings with key people in Washington D.C. in an attempt to floor the Basic Formula Price.

In addition the groups will be urging a complete investigation into the Green Bay Cheese Exchange to determine if prices are rigged against the dairy farmers.

Also, there will be attempts to have the cheese exchange eliminated as a prime mover in developing the Basic Formula Price.

In a conversation I had this

morning with experts from the U.S.D.A. on the cost of producing milk, they admitted that dairy farmers can just break even at \$14.00 per cwt. milk, but the dairymen need \$15.00 milk to start making investments back into their farm and at \$16.00 milk the farm can start returning something to the owner. Certainly, \$12.00 milk will do none of the above.

Help the cause by either working with us or through your own organization. Urge the Secretary of Agriculture to take immediate action.

The Secretary can be reached by calling (202) 720-3631 or fax (202) 720-2166, or by writing U.S. Secretary of Agriculture Dan Glickman, U.S.D.A. Room 200-A, 14th & Independence Ave. S.W., Washington, D.C. 20250.

Please make your contacts today. Pro Ag can be reached at (717) 833-5776.

Arden Tewksbury
Meshoppen



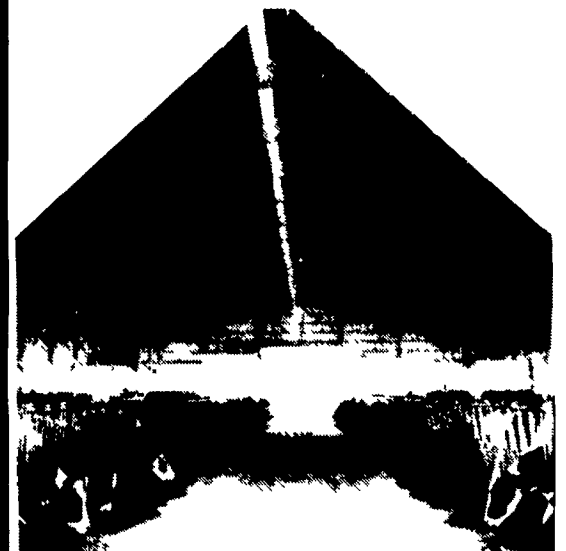
Lancaster Dairy Herd Improvement Assoc.
1592 Old Line Rd. Manheim, PA 17345
(717) 665-5960

Lancaster DHIA Banquet Set

Lancaster DHIA will hold their Annual Banquet and Meeting on Tuesday, December 10 at 11:30 a.m. at Good & Plenty Restaurant in Smoketown. A delicious roast beef dinner will be served. Come hear about the exciting events happening in the association as well as the many changes taking place in National DHIA. Tickets are \$9.50 and can be purchased from any Lancaster DHIA Technician or by calling the office.

Lancaster DHIA serves dairymen in Berks, Chester, Dauphin, Lancaster and York County. For more information on our services call us at (717) 665-5960.

MILK. IT DOES A BODY GOOD.™



AGRICULTURAL ENGINEERING CONSULTANTS

"CALL US TO DESIGN YOUR
NEXT BUILDING PROJECT"

FARMSTEAD PLANNING

BUILDING DESIGN

BLUEPRINT DRAFTING

VENTILATION DESIGN

DAIRY FACILITIES DESIGN

Timber Tech Engineering, Inc.

P.O. Box 145

256 West Franklin Street

Womelsdorf, PA 19567

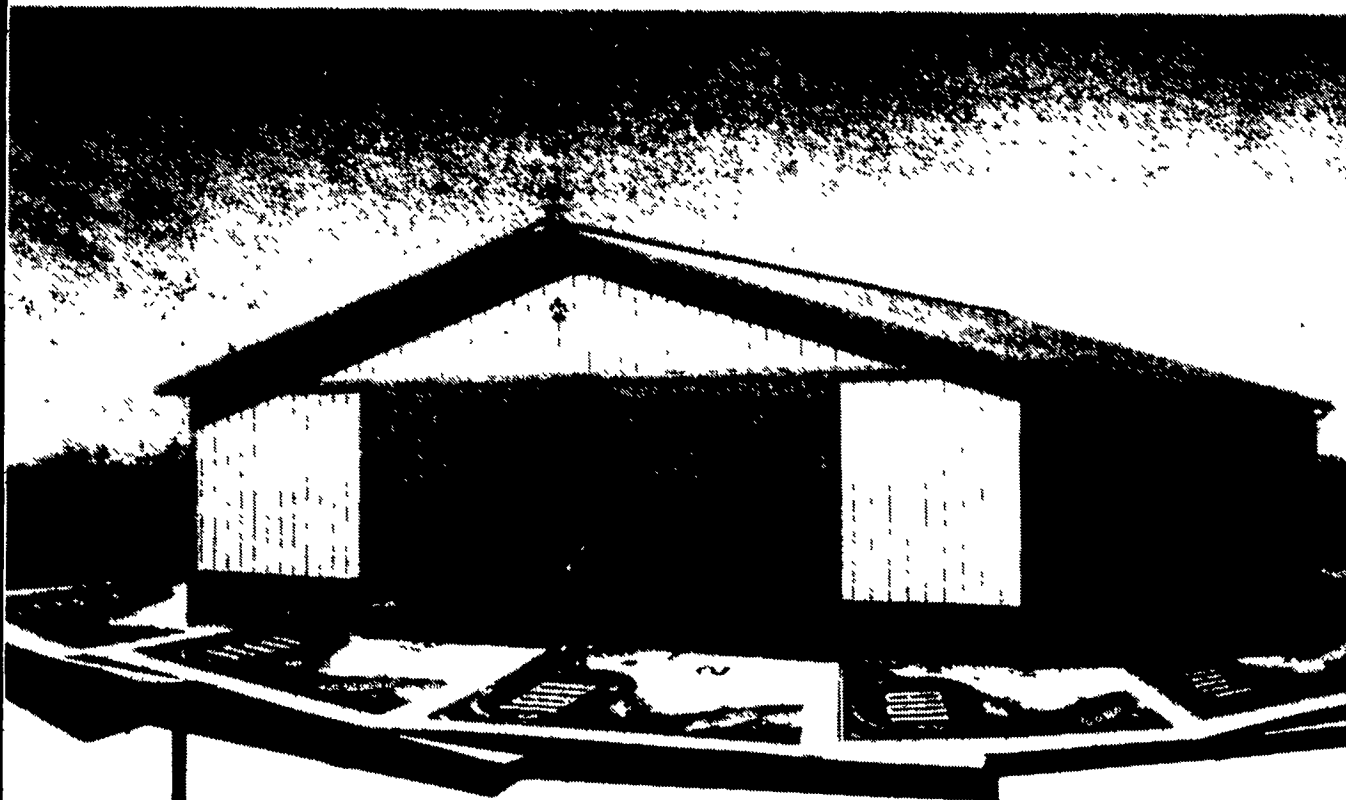
PH: (610) 589-4589

FAX: (610) 589-5384



ORDER NOW!

Prepare Site Or Install Concrete Foundation Before
December 31, 1996 For 1997 Construction and Receive \$500.



That's right! If your plans for 1996/1997 include a new building of any kind, call Morton Buildings now! Simply prepare a level building site or concrete foundation by December 31, 1996 . . . for construction immediately thereafter in 1997 . . . and Morton Buildings will pay you \$500! What's more, you'll avoid anticipated 1997 price increases. Take advantage of low winter prices and order now! See your local sales consultant for details.

CONTACT:

717/624-3331

3368 York Rd.

Gettysburg, PA 17325

908/454-7900

P.O. Box 126,

Phillipsburg, NJ 08865

800-447-7436
**MORTON
BUILDINGS**
P. O. Box 399, Morton, IL 61550
© 1994 Morton Buildings, Inc