

# Bedford County DHIA Presents Awards

**LINDA WILLIAMS**  
Bedford Co.  
Correspondent

est average milk and protein production.

The Ritchey herd averaged 23,896 pounds of milk, and 774 pounds protein; while the Hidden Fox herd made an average of 23,425 pounds of milk, 740 pounds of protein.

Recognized as the most improved in milk production, Rod and Cathy Carson, of Martinsburg, were honored for having an average increase in milk production of 1,771 pounds.

Their 50-cow herd's year-end average production was 21,025 pounds of milk.

Hidden Fox was named the second most improved herd, with an average milk increase of 1,478 pounds of milk.

As far as individual cow production, Meadow Creek Farm in Bedford was cited for having the most milk-producing cow, a 4-year-old;

while Marlin Heisey, of Osterburg, had the second highest milk-producing cow.

The highest protein producing cow was also a 4-year-old, owned by Jack E. Colledge, of Everett, with 1,042 pounds, while the second highest protein producing cow was from Meadow Creek Farm, with 1,010 pounds protein.

In other business, Chris Kidd, of Everett, was elected for the first time to the county board of directors, while Joe Garman was re-elected to a position on the board.

Also speaking during the event was Dick Ferry, a former artificial insemination technician from New Enterprise.



From the left, Chris Kidd is elected to the Bedford County DHIA board of directors, and stands with county Dairy Princess Becky Carson, and banquet speaker Dick Ferry.

**IMLER** (Bedford Co.) — Bedford County Dairy Herd Improvement Association held its annual awards banquet recently at the Imler Fire Hall, in Imler.

County Extension Agent Susan Fox presented awards.

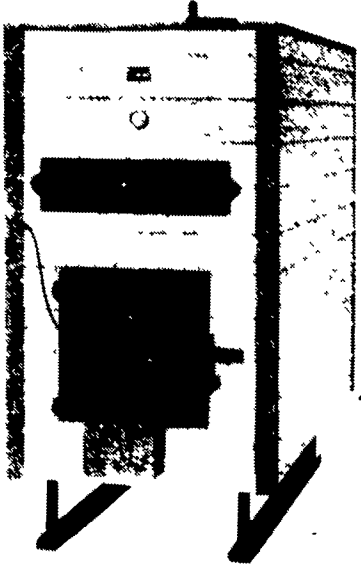
Walking off with top honors for its herd management was Hidden Fox Farm, of Martinsburg, with a 50-cow herd.

The Steve and Jeri Ritchey farm, also in Martinsburg, was the second-place winner of the annual management award, which is based on a point system that includes, milk production, mastitis management and reproductive management.

The two farms also received the county's top two awards for high-

## Get MOOOvin' with Milk!

### GLENWOOD Outdoor Boilers



Numerous combination boilers and furnaces are also available, including wood, coal and oil fired models.

**PENN MFG. CO.**

393 W. Lexington Rd., Lititz, PA 17543

Call (717) 626-1397 or 627-2303

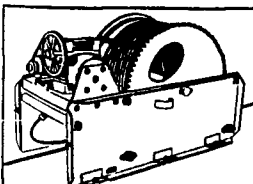
### CABLE SCRAPER SYSTEM FOR FREE STALL BARN

# HOULE

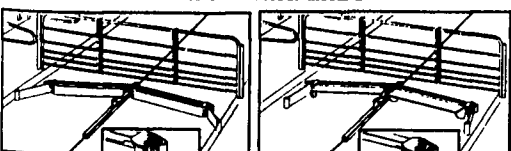
**DRIVE UNIT WITH 3/8" STAINLESS STEEL CABLE**

- Drive chain #80.
- Shaft end of reducer supported by an extra roller bearing to eliminate the overhung load of drive chain.

**CONTROL PANEL:** Multi-function with programmable clock, adjustable overload relay and controls to operate the system in continuous or manual mode.



**16° TILTING SCRAPER WITH FOLDING ENDS**



**Forward stroke**

- Scraper angled shape brings manure towards center for improved lateral stability
- Folding ends following uneven alley width for better cleaning.
- During backward stroke, the blades instantly tilt 4-1/2" upward above

**Backward stroke**

- bottom of alley to prevent dragging of manure
- 18" DIA. CONNER WHEELS:** Mounted on greasable taper roller bearings protected by 2 seals

**Cedar Crest Equipment**  
Two Convenient Locations

608 Evergreen Rd. Lebanon, PA 17042 (717) 270-6800 1-800-646-6601  
RD 2 Box 271 East Earl, PA 17519 (717) 354-0584



We wish you a prosperous  
**Thanksgiving...**  
generation after generation.

As a cooperative owned by the people who use us, Farm Credit has served the needs of rural Americans for generations. In fact, for over 75 years we have been a dependable source of credit to agriculture.

At this time of thanks, as we count our blessings at Farm Credit, we're especially thankful for America's farmers, whose bountiful harvests make Thanksgiving such a special time.



**Farm Credit**  
A Customer Owned Business

**Southeastern PA**  
Keystone Farm Credit  
(800) 477-9947

**Western PA**  
PennWest Farm Credit  
(800) 998-5557

**Northern PA**  
Northeastern Farm Credit  
(800) 326-9907

**South Central PA**  
York Farm Credit  
(800) 503-9937

