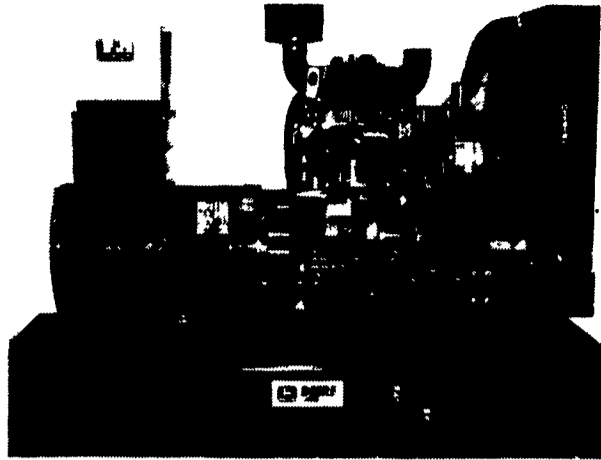


# GENERATORS



MARTIN ELECTRIC PLANTS • Manufacturer of:  
DIESEL, LP GAS, NATURAL GAS, PTO  
Automatic & Manual Start Systems  
**USED UNITS ALSO AVAILABLE**

Call Us For All Your Generator Needs!

## MARTIN ELECTRIC PLANTS

280 Pleasant Valley Rd., Ephraim, PA 17622-8620

800-713-7968

Tel: 717-733-7968 Fax: 717-733-1981



### J.D. 3155 Diesel 4x4

Hi & Lo - 95 H.P. - 3382 Hrs. - Nice

\$21,700

717-733-7408



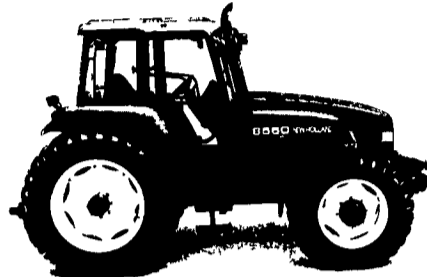
### J.D. 6600 Diesel

Cab & Air, Rotary Screen, Nice

\$6,700

717-733-7408

# STEP UP TO THE POWER!



## BE MORE PRODUCTIVE EVERY DAY

New Holland 60 Series GEMINI™ tractors deliver uncompromised power and versatile performance

**POWER.** Reliable 7.5 liter engines feature exceptional lugging ability

**PERFORMANCE.** The exclusive 18x6" Range Command™ transmission features six powershift gears in three ranges. Or choose the new 23x12 Dual Command™ transmission

**COMFORT.** Exceptional visibility front to rear plenty of legroom, easy-to-reach controls, two doors, comfortable seat and quiet interior

**SERVICE.** Exclusive flip-up hood allows total access to battery and filters



## TRACTORS THAT TAKE HARD WORK SERIOUSLY

New Holland 35 Series tractors really pull their weight in the field

- 4-cylinder, New Holland engines have good lugging capacity, and produce very little smoke or noise
- The high-capacity, 14.5 gpm hydraulic flow assures dependable operation
- 3-point lift system, activated by a touch control, is best in class
- Electro-hydraulic differential lock provides maximum traction when needed

## TOUGH

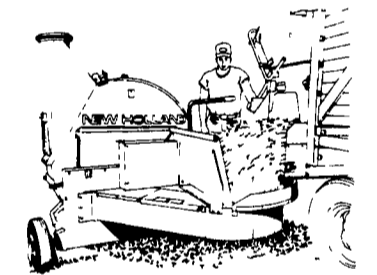


Need to handle the toughest jobs? Check out the Model L465 New Holland Super Boom™ skid-steer loader. The "L465" is built tough to give you superior performance and durability

The "L465" has a 30-horsepower, diesel engine and a 1,250-pound SAE operating load. It has a Pick Up 'n Go™ universal attachment system so it's compatible with New Holland or competitive attachments. And, you can get to routine service points with the boom down

Stop in to see what makes New Holland Super Boom so tough

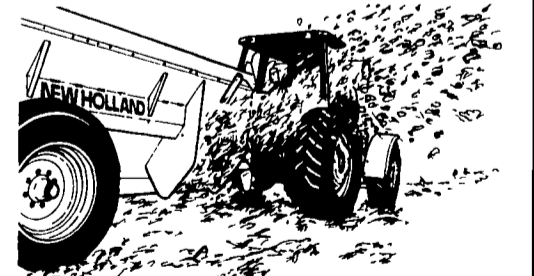
## RELIABLE AND DURABLE



## GET INCREASED SPINNING ACTION

Save time and increase efficiency with a Model 28 New Holland forage blower. This 540-rpm blower features a 44-inch diameter hopper that center-fills silos up to 80 feet high

The Whirl-a-Feed™ rotary table spins crops into the blower housing, and material gets off to a fast start up the blower pipe. Spinning action breaks up heavy clumps, and virtually eliminates plugging



## THIS SPREADER'S GOT STAYING POWER

The Model 306 side-delivery spreader spreads slurry, free-stall, gutter, poultry and even most pen-packed manure cleanly and quickly. Offset auger paddles use power efficiently. Hydraulics control the spread pattern for a consistent spread rate

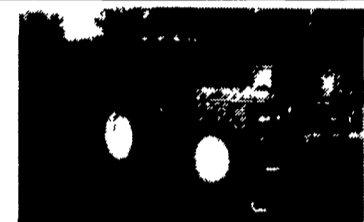
Get optional side extensions for 1700-gallon capacity. It's built so well it comes with a twelve-year tank warranty

## USED EQUIPMENT TRACTORS

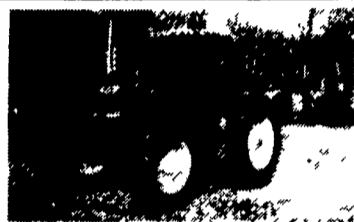
- FORD 9N (L)
- IH 1130 HYDRO W/LOADER (L)
- KUBOTA B8200HST W/LOADER (L)
- SKID LOADER**
- NH L778 (L) GEHL 4610 (L)
- BOBCAT 440 W/2 BUCKETS (C)
- Coming In - NH L555 (C)
- BALERS**
- NH 848 RD BALER (C)
- NH 853 RD BALER (C) JD 430 RD BALER (L)
- NH 855 RD BALER (C) IH 425 SQ BALER (L)
- NH 850 RD BALER (C) W/TROWER (C)
- HAY TOOLS**
- NH 488 HAYBINE (L)
- NH 489 HAYBINE (L)
- IH 1190 MOWER COND. (C)
- FORAGE**
- NH 782 HARVESTER W/2R & PICKUP (L)
- NH 28 BLOWER (C)
- IH 120 FORAGE BOX (L)
- GRINDER MIXER**
- NH 355 GRINDER MIXER (C)



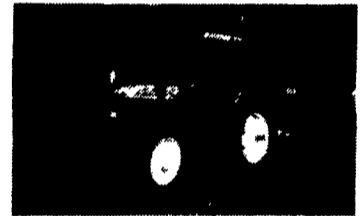
C=HONEY GROVE L=LOYSVILLE



1996 JD 7400 MFWD, Cab, Air, Power Quad 18-4-38's, 13-6-28 Fronts with Fenders, triple remotes, only 21 hrs. warranty till May 1, 1988 like brand new .....\$46,000



1995 JD 6400 MFWD, Cab, Air, Power Quad, 18.4-38 radials on rack and pinion axles, 13.6-28 Fronts with Fenders, Side Exhaust, Only 327 hrs. warranty till 11/97 like brand new .....\$39,000



1995 JD 7400 MFWD, Cab, Air, Power Quad, 18.4-38's on rack and pinion axles 13.6-28 fronts with fenders, 1056 hrs., like brand new warranty till 8/97.....\$42,500



1990 JD 2955 MFWD, Cab, Air, 18.4-38's, new 13.6-28 fronts with fenders, 3650 hrs with ex JD 265 loader very clean runs ex .....\$30,000



1994 Ford 7740 SL MFWD, Dual Power, 24 sp, 85 HP, 18 4-34 rear, 14.9-24 fronts, roll-bar, Fronts weights only 700 hrs., just like new. ....\$26,000



1984 Massey Ferguson 3525 MFWD, 105 HP, Cab, Air, New 18.4-38 rear, new 13.6 - 28 fronts with fenders, 3900 hrs. very clean, run's ex.....\$20,500

- 2-1994 JD 7400 MFWD's, Rollbar and Canopy, 18 4-38s on rack and pinion axles, 13 6-28 fronts with fenders, Power Quad, 1650 hrs., like new, warranty till 8/1/97 .....\$32,500/ea.
- 1993 JD 7900 MFWD, Cab, Air, Power Quad, 4 remotes, Front Fenders, 18 4-42 radial axle duals, 16-28 Radials front, 1100 hrs., super sharp, like new .....\$57,500 or \$58,000 without duals
- 1994 JD 6400 MFWD, Cab, Air, Power Quad, Side Exhaust, Dual Remotes and PTO, 1900 hrs., 18 4-38's rear, 13 6-28 Fronts with Fenders with JD 640 loader, super sharp, must see .....\$38,500
- 1993 JD 6400 MFWD, Power Quad, Side Exhaust, Triple Remotes, 2,160 hrs., 18 4-38's, 13 6-28 Fronts, Super Sharp .....\$32,500
- 1992 JD 4455 2 WD, Cab, Air, 15 sp, PS, ex 20 8x38 radials, 2500 one owner hours super sharp and clean .....\$45,750
- 1994 JD 44450 MFWD, Cab, Air, 15 sp, PS, 140 HP, ex 20 8-38 radials, 16 9R 28 Fronts with Fenders and Weights, Triple Remotes, 2900 hrs., sharp and clean .....\$40,000
- 1993 JD 4450 2WD, Cab, Air, Quad-Range, ex 20 8x38 radials, 4100 hrs, very clean, runs ex .....\$26,500
- Late 1981 JD 4440 Cab, Air, Quad-Range, 20 8-38's, 3650 hrs, very clean and sharp, run's ex .....\$24,000
- 1990 JD 4240 Cab, Air, Quad-Range, Dual Remotes, Front Weights, 5100 hrs., 20 8-38's, Clean runs ex, .....\$18,500
- 1978 JD 4240 Cab, Air, Quad-Range, 4000 hrs., Dual Remotes, Real Clean, Runs Ex. ....\$20,000
- 1979 JD 4640 Cab, Air, Quad-Range, Front Weights, 85% 20 8-38 radials only 3650, one owner hours, very clean, runs ex .....\$23,500
- 1979 JD 4040 Cab, Air, Quad-Range, 18 4-38's, dual remotes, real sharp, runs ex .....\$19,500
- 1977 JD 4230 Fender tractor, Quad Range, 18 4-38's, Dual Remotes, ex running, clean tractor .....\$12,500

- 1979 JD 2640 18 9-30's only 1700 hrs, 8 sp run's ex .....\$10,000
- 1986 JD 2550 MFWD Rollbar, 3400 hrs., 18 4-30's, 12.4-24, Fronts, Hi-Lo with JD 245 loader, clean, runs ex .....\$19,500
- 1989 Massey Ferguson 3650 MFWD, Cab, Air, 130 HP, 18 4-38 Axle, Duals, 14 9-28 with Fenders, 2500 hrs, Very Clean, Runs ex .....\$27,750
- 1986 Massey Ferguson 3645 2WD, Cab, Air, 130 HP, 18 4-38 radials, 2500 hrs, super sharp and clean, must see .....\$19,500
- 1987 Ford TW25 Series II Cab, Air, MFWD like new, 20 8-38 Firestone 7000 radials, Like New, 16.9-28 Fronts with Fenders, 16 Front weights, Triple Remotes, 2500 hrs., Super Sharp and clean, must see .....\$31,500
- 1984 Case 3294 MFWD, Cab, Air, 170 HP ex 20 8-38 radials rear, 14 9-24 Front Frontweights, Quick Coupler, 2500 one owner hours, super sharp and clean runs ex .....\$26,500
- 1990 Case IH 5140 Maxum MFWD, Cab, Air, 94 HP, ex 18 4-38 radials, ex 14 9-24 Fronts with Fenders, 2500 hrs, powershift with reverse, real sharp .....\$31,000
- 1990 Case IH 5130 Maxum MFWD, Cab, Air, New 18 4-38's on Bar Ades, New 14 9-24's, Dual PTO and Remotes, Powershift with Reverse, 1960 hrs, runs ex .....\$26,500
- 1983 Case IH 895 2WD, 72 HP, 540 + 1000 PTO, Dual Remotes, TA, Rollbar, 18 4-34's, 270 actual hrs., like new .....\$19,500
- 1989 Case IH 895 4WD, 72 HP, Rollbar, TA, 2400 hrs, new 18 4-30's, new 12 4x24 Fronts, Dual PTO and remotes with CIH 2255 loader very clean, runs ex .....\$19,500
- 1981 IH 906 Cab, Air, Dual, PTO and remotes only 1900 hrs 20 8-38's super good, one owner .....\$19,000
- Degelman 14 ft., 6 way, Dozer Blade off JD 6550 hardly used .....\$5,250
- Year Round Cab Fits JD Utilities
- Duetz Alliance 7085 MFWD, Cab, Air, 1500 hrs Coming in
- Farmhand XG30 Tub Grinder, Very Good

Delivery Available Anywhere      Telemark Lease Financing Available

## Bures Bros. Equipment

Kings Highway, Shelton, Conn. 06484 1-203-924-1492

