

Philadelphia Fruit Market

PHILADELPHIA
NOVEMBER 20, 1996

CITRUS FRUITS

---GRAPEFRUIT: MARKET ABOUT STEADY 4/5 bucls FL Indian River Red 32s 8.00 36s 8.00 40s 8.00 48s 8.00 fr cond 5.00 56s 7.00 fr cond 5.00 Interior Red 23s 8.00-9.00 27s 9.50-10.00 36s 8.00 48s 7.00 White 36s 7.00

---LEMONS: MARKET ABOUT STEADY ctns AZ 115s fr qual 17.00 140s 21.00 fr qual 15.00 165s 18.00 fr qual 13.00 200s 13.00 fr qual 11.00 CA 95s 34.00 fr qual 18.00-19.00 115s 31.00 fr qual 15.00-18.00 140s 22.00-23.00 fr qual 14.00-15.00 165s 16.50 fr qual 11.00-11.50 200s fr qual 9.00-10.50 235s fr qual 10.50

---LIMES: MARKET BA SLIGHTLY HIGHER, ABOUT STEADY. 10 lb ctns BA 28s 3.00-3.50 36s 3.00-3.50 42s 3.00-3.50 48s 3.00-3.50 MX 36s 3.50 42s 3.50 48s 3.50-4.00 54s 3.50 63s 2.50-3.50 mostly 3.00-3.50

---MISC CITRUS: 2.5 kg crts SP Clementine 28s 6.00 32s 6.00 40s 5.00-6.00 10 kg crts SP Clementine 96s 20.00 120s 18.00

---ORANGES: MARKET STEADY ctns CA Navel 56s 20.00 fr qual 11.00 72s 16.00-17.00 fr qual 11.00-13.00 88s 15.00-16.00 fr qual 11.00-13.00 113s 13.00 fr qual 9.00 138s 12.00 fr qual 8.50 7/4 lb flmbags 113 sz 13.00 4/5 bucls FL

Navel 40s 6.50-7.50 48s 7.00-9.50 some 6.50 56s 7.00-9.00 some 6.50 few 9.50 64s 7.00-9.50 some 6.50 80s 6.50-8.50 mostly 8.50 some 9.00 100s 6.00-8.00 125s 6.00-8.00 Hamlins 80s fr cond 7.50-8.50 100s 7.00-8.00 125s 7.00

---TANGELOS: 4/5 bucls/crts FL Nova 80s 13.00 125s fr cond 3.00-4.00 Orlando 125s fr cond 5.00-7.00

---TANGERINES: MARKET ABOUT STEADY 1/2 bu ctns CA Fairchild 60s 10.00 90s 10.00 120s 10.00 165s 10.00 4/5 bucls/crts FL Sunburst 80s 21.00 100s 20.00-22.00 fr cond 15.00-18.00 120s 13.00-16.00 fr cond 10.00-12.00 150s 12.00-14.00 fr cond 8.00-10.00 176s 11.50-12.00 fr cond 8.00-9.00 210s 8.00-11.00 some 7.00 Fallglo 120s 9.00

---TEMPLES: OFFERINGS NONE

BERRIES
---BLUEBERRIES: OFFERINGS LIGHT flts 12 5.6-oz cups CD AIR med 40.00

---CRANBERRIES: MARKET STEADY ctns 24 12-oz flmbgs MA Early Black 30.00-32.00 mostly 31.00-32.00

---MISC BERRIES: OFFERINGS LIGHT flts 12 1/2-pt bkts with lids CR Blackberries 36.00

---RASPBERRIES: flts 12 5.6-oz cups with lids GU AIR Red 36.00

---STRAWBERRIES: MARKET ABOUT STEADY flts 12 1-pt bkts CA med-lge 26.00-27.00 some loas 23.00 FL sml-med 26.00

MELONS
---CANTALOUPS: MARKET ABOUT

STEADY 1/2 ctns/crts AZ 12s 17.00 CA 15s 18.00

---HONEYDEWS: MARKET ABOUT STEADY 2/3 ctns AZ 5s 7.00 6s 6.00-7.00 CA 5s 6.00 MX 4s 4.00-5.00 6s 5.50-7.00 8s 6.00

---MISC MELONS: OFFERINGS INSUFFICIENT TO QUOTE
---WATERMELONS: ctns per ctn MX Jubilee 3s fr cond 8.00-10.00

---APPLES: MARKET STEADY NEW CROP ctns trypk CA U.S. ExFcy Granny Smith 88s 24.00 100s 22.00 WA WAExFcy Red Delicious 88s 16.50 100s 16.50-18.00 125s 18.00 Golden Delicious 72s 17.00 80s 17.00 88s 17.00 one label 23.00 100s 16.00-18.50 one label 19.00 113s 19.00 U.S. ExFcy Red Delicious 100s 14.50-16.00 WAFcy Red Delicious 64s 14.00 80s 14.00 88s 14.00 113s 14.00 125s 14.00 ctns celpk CA U.S. ExFcy Golden Delicious 96s 21.00 VT U.S. One McIntosh 100s 11.00-12.00 120s 10.00-11.00 ctns 12 3-lb flmbgs PA U.S. Fcy Red Delicious 2 1/2" min 9.00-10.00 2 1/4" min 8.00-9.00 Stayman 2 1/2" min 9.00-10.00 2 1/4" min 8.00-9.00

---APRICOTS: OFFERINGS NONE

---AVOCADOS: ctns 2 lyr FL Various Greenskin Varieties 32s 9.00 ctns FL Various Greenskin Varieties 16s 11.00-12.00

---BANANAS: MARKET STEADY 40 lb ctns IMPORT 12.00 fr Aual 10.00-11.00 40 lb ctns bagged IMPORT 12.50 ctns institutional pk IMPORT petite 13.00

---CHERRIES: TOO FEW SALES TO QUOTE

---FRUITS OTHER: ctns 1 lyr CA Apple Pears Hosui 14s 13.00 FL Carambola - Star Fruit 20s 14.00-15.00

---GRAPES: MARKET STEADY 21 lb lugs CA Ribiers med 17.00 Calmeria 15.00 Emperor 16.00-17.00 Red Globe 28.00-30.00 mostly 28.00 fr qual 20.00 19 lb lugs bgd CA Ruby Red Seedless med-lge fr cond 19.00 Red Seedless med 20.00-21.00 Ribiers 17.00-18.00 some 20.00 Emperor med-lge 21.00-26.00 med 16.00-17.00 Red Globe 20.00-21.00 18 lb lugs bgd CA Crimson Seedless 20.00 occ 21.00 18 lb lugs wrpd CA Flame Seedless med-lge fr cond 20.00 16 lb ctns wrpd CA Thompson Seedless med-lge 35.00-36.00 mostly 35.00 ord cond 15.00-15.00 Flame Seedless med-lge 30.00 16 lb lugs bgd CA Black Seedless med-lge 20.00 Emperor med-lge 21.00 5 kg ctns IT Muscat 19.00-20.00

---KIWIFRUIT: MARKET STEADY flts 1 lyr CA 30s 7.00 39s 7.00-7.50 NZ BOAT 33s 8.00 39s 7.50 42s 7.00 ctns 22 lb lge CA 36 sz 15.00

---MANGOES: MARKET ABOUT STEADY ctns 1 lyr BR Tommy Atkins 10s 7.00-8.00 mostly 8.00 12s 7.00-8.00 fr cond 4.00-5.00 14s fr cond 4.00-5.00

---NECTARINES: OFFERINGS NONE

---PAPAYA: 37 lb ctns FL Green Cooking Type 11.00

---PEACHES: OFFERINGS NONE

---PEARS: MARKET STEADY and ctns wrpd OR U.S. One Bosc 70s 25.00 80s 25.00 90s 25.00 100s 23.00 120s 21.00 WA U.S. One D'Anjou 90s 26.00 100s 25.00 135s 20.00 Red Sensation 120s 17.00

---PERSIMMONS: MARKET STEADY ctns 1 lyr CA Fuyu 20s 8.00 24s 7.00 28s 5.00 Hachiya 16s 9.00-10.00 18s 6.00-7.00 20s 8.00 21s 7.00-8.00 fr cond 5.00-6.00 24s 7.00-8.00 fr cond 5.00-6.00 28s 5.00-6.00

---PINEAPPLES: MARKET STEADY ctns 1 lyr HI AIR 6s 11.50-12.00 ctns 2 lyr CR 12s 12.00

---PLANTAINS: MARKET STEADY 50 lb ctns CB Green 16.00-17.50 CR Green 17.00-17.50 EC Green 17.00-17.50 VZ Green 17.00-17.50

---PLUMS: OFFERINGS INSUFFICIENT TO QUOTE

---POMEGRANATES: OFFERINGS LIGHT lugs 2-lyr CA Wonderful 24s 15.00 26s 15.00 42s 15.00

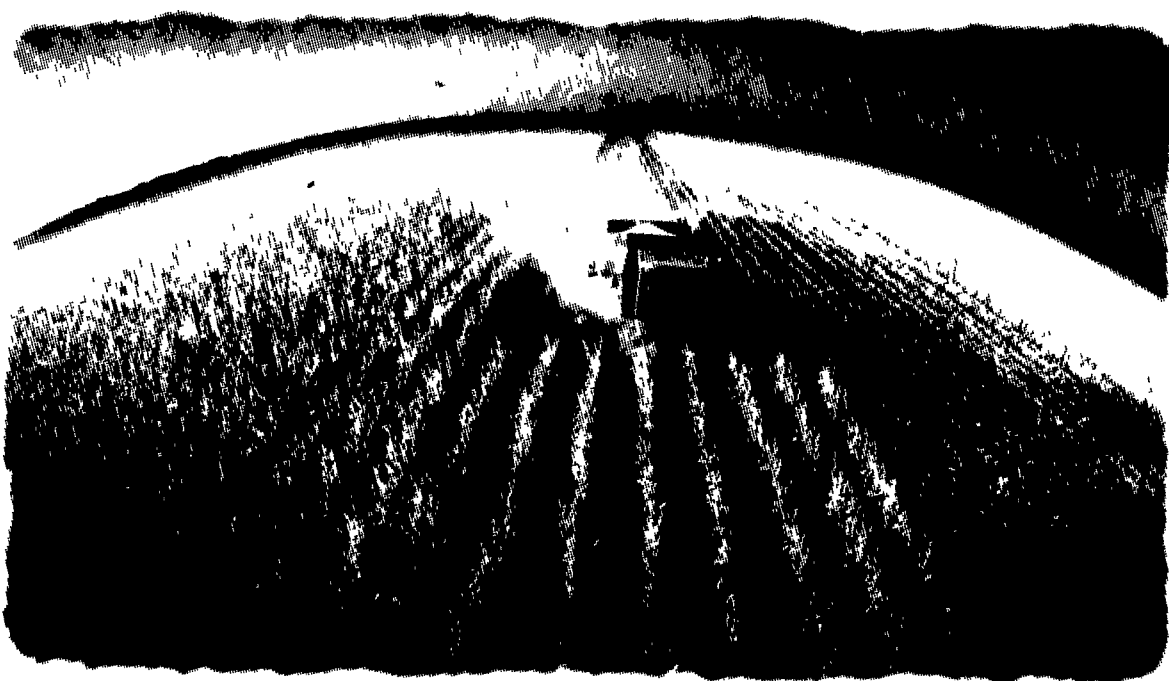
---PRUNES: OFFERINGS NONE

Snyder County Produce Auction


Open 12 noon Mon. and Fri.
Port Trevorton, PA
November 21


Report Supplied by Auction
POTATOES: 1.00-4.00 50 LBS.
APPLES: 4.00-8.00 BU.
TURNIPS: 1.00-4.00 1/4 BU.
CABBAGE: .15-.45 HEAD.
CAULIFLOWER: .20-.60 HEAD.
ONIONS: 4.50-6.00 50 LBS.
LETTUCE: 6.00-11.00 24 CT.
CARROTS: 5.50-7.00 50 LBS.


**IN A PERFECT WORLD, TIRES NEVER GO DOWN
IN THE FIELD, PRICES ALWAYS GO UP AT HARVEST,
AND YOU ALWAYS PLANT THE HIGHEST YIELDING SEED.**



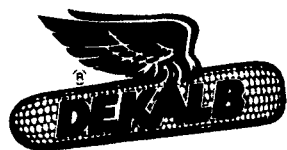
UNTIL THEN, WE HAVE OPTIONS FOR THE REAL WORLD.

-  **DK546** 104-day RM
 - Fast emergence
 - Excellent stalk strength
 - Very good test weight
 - Excellent yield across all soil types

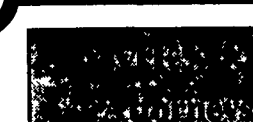

-  **DK642** 114-day RM
 - High yield potential
 - Very good emergence in no-till
 - Girth flex ears
 - Good resistance to Gray Leaf Spot

-  **DK668** 116-day RM
 - Consistent performance over wide conditions
 - Excellent drought tolerance
 - Very good seeding growth for no-till
 - Strong stalks for delayed harvest

**EARLY ORDER
PAY SAVINGS
8%
until Dec. 5th**



**See Your Local DEKALB Dealer or Call
DEKALB'S Regional Office @ 717-741-5590**

Mark L. James James R. Clark

Estate Planning for Farm Families

- Wills, trusts and tax planning
- Charitable giving

Business Planning for Farm Families

- Farm partnerships and corporations
- Succession Planning/Farm Transfers

Real Estate

- Tax-free exchanges of real estate
- Real estate settlements
- Public sales

Estate Settlements

- Prompt settlement (most completed in 3 months)
- Tax planning during settlement

54 Queen Road, P.O. Box 497
Intercourse, PA 17534
(717)768-7100

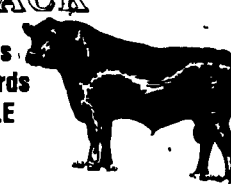
Offices also in:

New Holland Willow Street
(717)354-6083 (717)464-4483

**ATTENTION
Cattle Feeders,
Backgrounders &
Cow/Calf Managers!**

**LANCASTER'S FRIDAY
FEEDER AUCTION
IS BACK**


Walter M. Dunlap & Sons
at the Lancaster Stockyards
will offer FEEDER CATTLE
SALES on FRIDAYS
at 12:00 NOON



* After Jan. 1, we will also be accepting consignments of slaughter cattle on

FRIDAYS

* The Wednesday cattle auction will be discontinued after Jan. 1, 1997

Here Today,  Here to Stay

**Walter M. Dunlap & Sons
Phone: 717-397-5136**

Livestock Marketing for the 21st Century