

**35 TRUCKS & TRAILERS**

**LEFEVER BROS. CHEVROLET CHEVY TRUCKS GEO**

**YOUR DIRECT LINE TO GENUINE GM PARTS**

**(800) 533-3837**

When you call the number listed above, you'll reach our wholesale parts specialists, who can help you keep your GM repair work moving quickly.

Ask about:

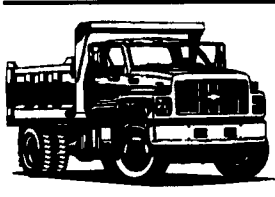
- Specializing in GM Medium Duty Trucks, Current and Obsolete.
- \$500,000 Parts Inventory.
- Parts Locator for Those Hard to Find Items.
- We Ship Anywhere, Local Delivery Available.
- Experienced, Knowledgeable Personnel.

Mon., Tues., Thurs., Fri. 7:30 a.m.-4:30 p.m.  
 Weds. 7:30 a.m.-8:30 p.m.  
 Major Credit Cards Accepted

**(717) 432-9697**  
 Quality Dealer Since 1921  
 406 U.S. Rt. 15, Dillsburg, PA 17019

**GM Goodwrench Service**

**Kodiak Chevy Trucks CAT DIESEL POWER**



**BOWERS**

**USED CARS INC.**

Route 30 West of Abbottstown, PA  
 7015 York Rd. 717-624-7072



91 FORD EXPLORER XLT 4X4  
 Mint Cond & Loaded  
 81 000 Miles \$12,800



87 CHEVY BLAZER 4X4  
 V-8, Auto, PS, PB  
 Power Angle Plow \$6,995



85 CHEV CREW CAB  
 1 Ton Dump - 350 V-8  
 4 Speed PS, PB  
 53 000 Miles \$6,995



85 INTERNATIONAL S1600  
 CAB & CHASSIS  
 Diesel, 5 Spd. PS,  
 PB, 95 Miles  
 Real Nice Condition! \$8,995



95 CHEVY SUBURBAN  
 2500 4x4 Loaded 63 000 Miles 3  
 yrs/45 000 Warranty \$28,900



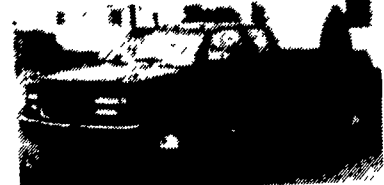
95 GMC 3500 Series  
 Cab & Chassis Dual Wheels 4x4 V-8 5  
 speed 3,600 miles! \$16,900



90 GMC 3/4 ton 4x4  
 Suburban  
 350 V-8, Auto PS, AC PB Mint Cond,  
 Over in Miles \$8,995



86 FORD CREW CAB  
 One Ton Dump w/stake body, 460 V-8,  
 auto, AC, PB, PS  
 57 000 miles \$8,995



**94 GMC 3500 SLE,**  
 Extended Cab, Dually, 10,000  
 Lb. GVW, 6.5 Turbo Charged  
 Diesel, 5 speed, 4x4, Fully  
 Equipped, 54,000 Miles

**Brickerville Auto Sales**  
 Rt. 322 Brickerville, PA  
 717/626-6198

**FOR SALE**



**1986 C20 STEP VAN**  
 350 V8, Auto, 10' Box Good Cond.  
 only 63,000 miles

**\$5,800**

Call 717-733-1702

**Whitmoyer FORD • MERCURY**

Has Your "Hard To Find"

**4x4 TRUCKS**

1997 Ford F250  
 4x4 Ext. Cab, Auto,  
 V-8, Loaded



1994 Ford  
**Ranger**  
 Low Mileage  
 Was \$13,995  
 Reduced to \$11,875  
 Stock#W4847B



1994 Ford Explorer  
 4dr Dark Green,  
 Loaded, Stock #9740A  
 Was \$20,995  
 Now \$19,495



1997 Ford F250  
 Heavy-Duty, Reg  
 Cab, Diesel



1994 Ford  
**F150**  
 4x2 5 sp, A/C,  
 Stock #4432  
 Mgr. Special  
 \$10,800



(File Photo)  
 1993 Ford Explorer  
 "Eddie Bauer"  
 Stock #P6333  
 Was \$20,495  
 Reduced To: \$18,395



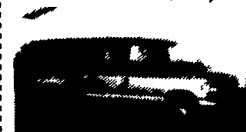
1997 Ford 4x4  
 "Off Road"  
 Ext. Cab, Auto, V-8,  
 Loaded



1990 Ford Ranger  
 Auto, AC,  
 6 cyl. Red  
 Reduced To \$5,850



1995 Ford Club  
**Wagon XLT**  
 Low Miles, Stock  
 #4635B  
 Was \$21,995  
 Reduced to: \$20,495



1995 Ford F150 XLT  
 Auto, V-8,  
 18,000 Miles was  
 \$15,495  
 Reduced To: \$13,595



1991 Dodge Grand  
**Caravan SE**  
 6 cyl, Auto, 7 passenger.  
 Was \$11,995  
 SALE \$9,995



1997 Ford F150  
 Ext. Cabs XLT, 4x4,  
 7,000 Miles.  
 Was \$30,850  
 NOW \$26,895

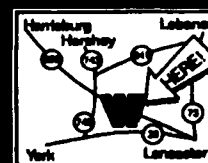


CUSTOMER SATISFACTION WORTH DRIVING FOR

**Whitmoyer FORD • MERCURY**

Rt. 283 & Rheems/E-town Exit • Elizabethtown  
 Sales Hrs: M-F 8:30 am - 9pm • Sat. 9am - 5pm  
 367-7022 or 1-800-267-2088

Next to Messick's Farm Equipment



**WOLF MOTOR CO.**

ROUTES 72 & 283, LANCASTER, PA 17601

CENTRAL PA'S

FORD TRUCK DEALER

Sales Reps.  
 Charlie Burke

Gary Brennehan  
 Dennis Asel, Mgr.

717-299-4331 Toll Free 800-637-6612



1989 FORD F700 DUMP  
 170 HP Diesel, 5+2 speed, Air  
 Brakes, 28,000 GVW.  
 \$14,900



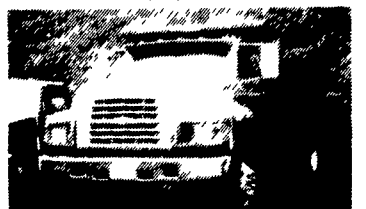
1982 FORD F350  
 351 V-8, 4 speed manual, 9'  
 Refrigerator Body  
 \$6,900



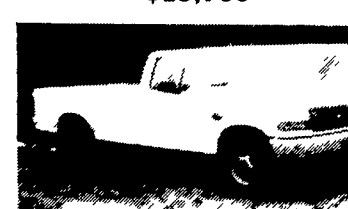
1992 CHEVY C-20  
**CARGO VAN**  
 V 8, Auto, AC, AM-FM, 75,000 Miles  
 \$7,900



1995 FORD F350  
 Super Cab Dually, Power Stroke  
 Diesel, 5 Speed, XLT Package  
 \$19,700



1995 FORD F800  
 33,000 GVW, 10' Dump Body,  
 250 HP Diesel, Air Brakes, AC, 7  
 Speed Trans. 32,000 Miles  
 \$37,900



1995 FORD F250  
 4x2, 357 V-8, Auto, AC,  
 8600 GVW, 29,000 Miles  
 \$13,900

1996 LEFTOVERS



1996 F350  
 Powerstroke Diesel, 5 speed manual,  
 AC, 12' Dumping Stake Body  
 \$25,360



1996 F350  
 351 V-8, 4-speed Auto, AC,  
 Reading Utility Body  
 \$20,250