

Greencastle Livestock

Greencastle, Pa.

Report Supplied by Auction
November 4, 1996

SLAUGHTER CATTLE RECEIPTS: 500 HEAD. SLAUGHTER STEERS: 117 HEAD, TREND STEADY. HIGH CHOICE AND PRIME 2-4 70.00-73.75; CHOICE 2-3, 950-1075 LBS. 60.00-67.00; CHOICE 2-3, 1075-1375 LBS. 64.00-70.00; CHOICE 2-3, OVER 1375 LBS. 61.00-65.50; CHOICE 4, ALL WEIGHTS 58.00-64.00; SELECT AND CHOICE 1-2, 950-1100 LBS. 53.00-60.00; SELECT AND CHOICE 102, 1100-1375 LBS. 54.00-62.00; SELECT AND CHOICE 1-2, OVER 1375 LBS. 55.00-63.00.

HOLSTEINS CHOICE 2-3, 1050-1450 LBS. 49.00-56.50; SELECT 1-2, 1050-1450 LBS. 42.00-48.00.

SLAUGHTER HEIFERS: 23 HEAD. STEADY TREND. CHOICE 2-3, 850-1000 LBS. 58.00-64.00; CHOICE 2-3, 1000-1250 LBS. 61.00-70.50; CHOICE 4, ALL WEIGHTS 60.00-66.00; SELECT AND CHOICE 1-2, 850-1000 LBS. 52.00-60.50; SELECT AND CHOICE 1-2, 1000-1250 LBS. 54.00-64.00.

HOLSTEINS CHOICE 2-3, 1000-1350 LBS. 47.00-54.00; SELECT AND CHOICE 1-2, 1000-1350 LBS. 39.00-46.00.

SLAUGHTER BULLS: 35 HEAD. TREND STEADY. YG#1, ALL WEIGHTS 37.00-43.50; YG#2, ALL WEIGHTS

30.00-36.00.

BULLOCKS: 4 HEAD. CHOICE 1-3 950-1150 LBS., NONE; CHOICE 1-3 1150-1375 LBS., NONE; SELECT 1-2 950-1250 LBS. 40.00-48.00.

COWS: 321 HEAD, STEADY TREND. BREAKING UTILITY AND COMMERCIAL 31.00-37.75; CUTTER AND BONDING UTILITY 30.00-35.75; CANNER AND LOW CUTTER 29.00 AND DOWN.

STOCKER AND FEEDER CATTLE RECEIPTS: 1445 HEAD. INCLUDES RESULTS FROM FRIDAY SPECIAL SALE. TREND: HEIFER CATTLE STEADY, YEARLING AND HEAVY CATTLE STRONGER. BEEF TYPE STEERS 200-400 LBS. 39.00-59.00, BULLS 37.00-52.00, HEIFERS 35.00-50.00; 400-600 LB. STEERS 45.00-63.00, BULLS 40.00-49.00, HEIFERS 37.00-49.00; 600-800 LB. STEERS 42.00-53.00, BULLS 34.00-44.00, HEIFERS 38.00-49.50; 800-975 LB. STEERS 44.00-55.00, BULLS 34.00-40.00, HEIFERS 30.00-51.00.

HOLSTEINS AND DAIRY CROSS 200-400 LB. STEERS 28.00-37.00, BULLS 25.00-31.00; HEIFERS, NONE; 400-600 LB. STEERS 25.00-33.00; BULLS 24.00-31.00; HEIFERS, NONE; 600-800 LB. STEERS 25.00-34.00, BULLS 24.00-31.00; HEIFERS, NONE; 800-975 LB. STEERS 27.00-36.00, BULLS 22.00-31.00; HEIFERS, NONE.

CALVES: 480 HEAD. STEADY TREND. CHOICE 150-300 LBS., NONE; GOOD 150-300 LBS. 45.00-62.00; GOOD 100-150 LBS. 35.00-50.00; GOOD 80-100

LBS. 25.00-40.00; STANDARD 80-100 LBS. 18.00-30.00; STANDARD 80 LBS. AND DOWN 18.00 AND DOWN.

CALVES RETURNING TO THE FARM, STEADY WITH LAST WEEK. HOLSTEIN BULLS OVER 100 LBS. UP TO 70.00, UNDER 100 LBS. UP TO 62.50; HOLSTEIN HEIFERS OVER 100 LBS. UP TO 110.00 UNDER 100 LBS. 70.00; BEEF BULLS OVER 90 LBS. 50.00; BEEF HEIFERS OVER 90 LBS. 30.00.

SHEEP AND LAMBS: 77 HEAD. STEADY TREND. CHOICE 80-100 LBS. 75.00-85.00, 100-120 LBS. 72.00-84.00; FEEDER LAMBS 60-85 LBS. 80.00-90.00; LIGHT LAMBS 85.00-105.00.

SHEEP: EWES LEAN 26.00-36.00; EWES FAT 20.00-25.00; YEARLINGS 45.00-51.00; BUCKS 20.00-24.00.

GOATS: 200 HEAD. SMALL 14.00-39.00; MEDIUM 40.00-70.00; LARGE 60.00-120.00.

HOGS, SHOWS AND BOARS: 114 HEAD. 210-250 LBS. 48.00-52.50; 250-260 LBS. 50.00-52.50; 260-270 LBS. 49.00-51.00; 270-300 LBS. 46.00-50.50.

LIGHT HOGS 140-180 LBS. 35.00-45.00; 180-210 LBS. 42.00-50.50. SOWS STEADY. GOOD SOWS UNDER 400 LBS. 40.00-47.00, OVER

Lancaster Farming, Saturday, November 2, 1996

400 LBS. 45.00-53.00; CULL SOWS, ALL WEIGHTS, 39.00 AND DOWN. BOARS STEADY. 180-210 LBS. 36.00-40.00; 210-260 LBS. 37.00-40.00; 260-300 LBS. 37.00-39.00; 300 LBS AND OVER 37.00-39.00.

SALE EVERY MON. AT 2 P.M. AND EVERY THURS. AT 1 P.M. HAY AND STRAW EVERY MON. AND THURS AT 11:30 A.M.

SPECIAL FEEDER CATTLE SALE FRIDAY, DEC. 6 AT 7:15 P.M.

Grantsville Livestock

Grantsville, Maryland

Report Supplied by Auction
Sat., November 2, 1996

STOCK BULLS AND STEERS 200-500 LBS. 30.00-57.00.

STOCK HEIFERS 30.00-49.00.

SLAUGHTER STEERS GOOD TO CHOICE, NONE AVAILABLE; MEDIUM TO GOOD 32.00-58.00.

HOLSTEIN STEERS GOOD 35.00-47.00; LIGHT 30.00-37.50.

SLAUGHTER HEIFERS GOOD TO CHOICE, NONE AVAILABLE;

MEDIUM TO GOOD 42.00-60.00.

BULLS HEAVY 30.00-39.00, LIGHT 30.00-36.00.

COWS FEW HIGH DRESSING UP TO 36.00, UTILITY HOLSTEIN 30.00-34.00, CANNERS 24.00-30.00, CULLS 23.00 AND DOWN.

VEALS GOOD TO CHOICE UP TO 65.00, MEDIUM TO GOOD 35.00-55.00. BOB CALVES: 20.00 AND DOWN.

HOLSTEIN BULL CALVES RETURN TO FARM 90-120 LBS. 25.00-55.00. HOLSTEIN HEIFER CALVES RETURN TO FARM 100-120 LBS., UP TO 110.00.

BEEF CROSS CALVES RETURN TO FARM UP TO 50.00.

HOGS: TOP QUALITY 51.50-58.00, HEAVY 48.00-57.00, LIGHT 40.00-52.00, FEEDER PIGS BY THE HEAD, UP TO 40.00.

SOWS: UP TO 49.00.

MALE HOGS: 25.00-40.00. LAMBS: 70-85 LBS. 60.00-76.00, 85-125 LBS. UP TO 73.00; CULLS 60.00 AND DOWN.

SHEEP: UP TO 37.50.

GOATS: LARGE 50.00-80.00 HEAD; MEDIUM 20.00-45.00; SMALL 8.00-18.00.

Neighborly Advice...

John F. Lengel Has The Best Service In Town

For 42 years, John F. Lengel Inc. has been providing our community with the comfort and dependability of reliable fuel oil delivery service. You've come to depend on us for:

- Competitive Prices
- Automatic Delivery
- Easy Payment Plans
- Dependable 24-hour Repair Service
- Heating & Air Conditioning Equipment Sales



John F. Lengel Inc.

Rt. 422, Womelsdorf • (610) 589-2545 • Myerstown (717) 866-7968

John F. Lengel Inc...Some Things Never Change.

Randall G. Renninger

Certified Public Accountant

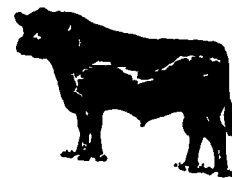
Specializing in agriculture and construction industries

"We help business people discover ways to cut costs, save taxes, and be more profitable"

Call about our FREE seminars

100 Foxshire Drive, Lancaster, Pa. 17601

(717) 560-5720 • Fax (717) 560-5721



WALTER M. DUNLAP & SONS
Lancaster Stockyard
1147 Lititz Pike, Lancaster, PA
717-397-5136

FEEDER CATTLE SALE

Wed., Nov. 20 & Dec. 18

Noon

Beginning Jan. 3, 1997 -

Feeder Cattle Sales will be held at

NOON on FRIDAYS

Slaughter cattle consignments are also welcome.

Pennsylvania Agricultural Commodities Marketing Association, Inc.

FORWARD PRICING  FEED INGREDIENTS

Corn
Soybeans
Wheat
Soybean Meal
Cottonseed
Hogs
Cattle
CASH GRAIN MARKET
Feed Grains
Wheat
Oilseeds

Soybean Meal
Distillers Grains
Hominy
Cottonseed

RISK MANAGEMENT

Hedging Services
Market Consultation
Min./Max. Contracts
Specialized Contracts

A privately held full service commodity merchandising firm.

Call today to see how PACMA can broaden your marketing efforts whether you're BUYING or SELLING Agricultural Commodities

Rail Facilities are available at Green Castle & Palmyra, PA
475 East High Street, Palmyra, PA 17078

800-PACMA Inc. • 717-838-7050

1-800-722-6246

Started by Producers for producers



THE PEOPLE THAT CONTROL THE PRICES DAIRY FARMERS RECEIVE ARE IN THE PROCESS OF LOWERING YOUR PRICE OF MILK MORE THAN \$3.00 PER HUNDREDWEIGHT OVER THE NEXT THREE MONTHS. PLEASE CALL YOUR CURRENT MILK MARKET AND ASK THEM WHAT THEY ARE DOING TO STOP THESE UNPRECEDENTED DECLINING PRICES. THEN CALL NFO AT 1-800-221-1718 AND ASK WHAT DAIRY FARMERS WORKING TOGETHER THROUGH NFO CAN ACCOMPLISH. THEN YOU MAKE YOUR DECISIONS WHETHER YOU WANT TO BECOME PART OF A GROWING MOVEMENT TO SOLVE THIS SITUATION.

NFO
NATIONAL
FARMERS
ORGANIZATION