

New Wilmington Graded Feeder Pig Sale

New Wilmington, PA
November 1, 1996

FEEDER PIGS 282. 45.0 LBS. PER PIG; 41.51 PER HEAD, 91.76 PER HUNDRED WEIGHT. ALL PRICES PER HUNDRED WEIGHT.
US#1-2 40-50 LBS. 100.00-107.50, 50-60 LBS. 100.00; 60-70 LBS. ONE LOT 90.00.
US#2 25-40 LBS. 90.00-100.00, 40-50 LBS. 80.00-107.50, 50-60 LBS. 90.00-105.00, 60-70 LBS. LOT 95.00.
US#2-3 25-40 LBS. 60.00-75.00, 40-50 LBS. 60.00-87.50, 50-60 LBS. LOT 90.00.

Indiana Hogs

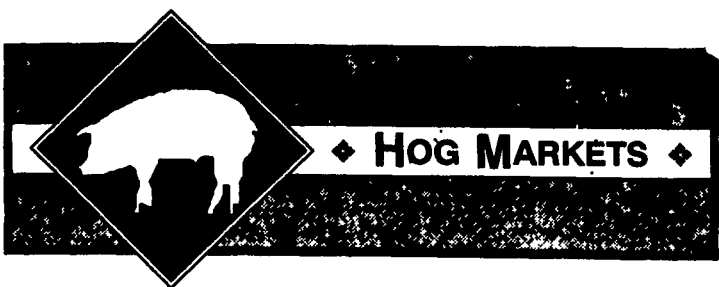
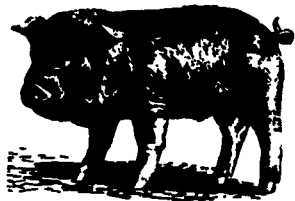
SPRINGFIELD, IL
NOVEMBER 7, 1996
Barrows and Gilts: Steady to Firm. Demand light to moderate on moderate offerings. Country Plants US 1-2 220-260 lbs. 50.00-51.50 Few 49.50 51.00-52.50 US 2-3 230-260 lbs. 44.00-49.50 Few 52.75 210-230 lbs. 38.50-44.00
Sows: Near Steady. US 1-3 300-450 lbs. 42.00-45.00 450-500 lbs. 45.00-48.00 500-650 lbs. 49.00-55.00 Few over 650 lbs. 55.50
Boars: 39.00-40.00 Preliminary estimate: 34,000 * Receipts have changed due to change in reporting base.

Middleburg Hog Report

Middleburg, Pa.
Nov. 4 & 5
Report supplied by PDA
129 HEAD, TREND 1.00 HIGHER.
US#1-2 220-240 LBS. 53.50-55.00;
US#1-3 220-260 LBS. 51.00-53.00;
US#2-3 210-270 LBS. 48.00-51.50.
SOWS: US#1-3 550-650 LBS. 48.00-51.00; US#1-3 450-550 LBS. 46.00-49.00, 350-450 LBS. MEDIUM 43.00-46.00.
BOARS: ALL WEIGHTS, 35.00-39.00.

Lancaster Graded Sow And Boar Sale

Lancaster, Pa.
Report Supplied by USDA
For Tuesday, November 5, 1996
TOTAL HOGS: 211.
GRADE SOWS 1-3: 29 HEAD 300-380 LBS. 43.50-44.50; 29 HEAD 425-435 LBS. 48.00-48.75; 32 HEAD 470-480 LBS. 51.25; 33 HEAD 515-575 LBS. 54.75.
MEDIUM #1-2: 32 HEAD 350-450 LBS. 42.25-43.00.
GILTS: US#2-3 5 HEAD 257 LBS 51.25; 7 HEAD 325 LBS. 48.00; 10 HEAD 380 LBS. 44.75.
BOARS: 9 HEAD 445-450 LBS. 41.85.



HOG MARKETS

Hatfield Direct

Hatfield, Pa.
Reports Supplied by Packer
For Monday, November 4, 1996
And Wednesday, November 6, 1996
MONDAY

TOTAL HOGS: 6653.
LAST WEEK: 6524.
TREND: COMPARED TO LAST MONDAY.. 2.41 HIGHER.
55.5%-56.4% 216-269 LBS. BASE 53.83.
56.5%-58.4% 216-269 LBS 54.70-55.56.
58.5%-60.4% 216-269 LBS. 56.43-57.30.

FEW 216-269 LBS. 58.17.
GOOD'S RECEIVING
MONDAY CASH: 52.75.
WEIGHT AND GRADE AVAILABLE.
WEDNESDAY
TOTAL HOGS: 6708.
LAST WEEK: 6620.
TREND: COMPARED TO LAST WEDNESDAY: 1.00 HIGHER.

55.5%-56.4% 216-269 LBS.: BASE: 53.00.
56.5%-58.4% 216-269 LBS.: 53.87-54.73.
58.5%-60.4% 216-269 LBS.: 55.60-56.47.

FEW 216-269 LBS.: 57.34.
GOOD'S RECEIVING
MONDAY: CASH, NO SALE.

New Holland Feeder Pigs

New Holland, PA
Wed., November 7, 1996
Report Supplied by USDA
TODAY 608 HEAD
LAST WEDNESDAY 522 HEAD
LAST YEAR 247 HEAD
COMPARED TO LAST WED., FEEDER PIGS FULLY STEADY. SUPPLY INCLUDED 45 PERCENT SOLD FOR SLAUGHTER. ALL PIGS WEIGHED ON ARRIVAL AND SOLD BY THE HUNDRED WEIGHT.
US#1-2: 30 HEAD 24-28 LBS. 110.00-115.00, WEIGHTED AVERAGE 24.63, WEIGHTED PRICE 110.76; 11 HEAD 37 LBS. 132.00, WEIGHTED AVERAGE 37.00, WEIGHTED PRICE 132.00; 46 HEAD 41-47 LBS. 116.00-118.00, WEIGHTED AVERAGE

45.43, WEIGHTED PRICE 116.47; 44 HEAD 55-57 LBS. 100.00-104.00, WEIGHTED AVERAGE 56.41, WEIGHTED PRICE 101.15; 14 HEAD 63-65 LBS. 82.00-98.00, WEIGHTED AVERAGE 64.00, WEIGHTED PRICE 91.39.

US#2: 61 HEAD 28-29 LBS. 70.00-95.00, WEIGHTED AVERAGE 28.70, WEIGHTED PRICE 82.69; 40 HEAD 34-35 LBS. 104.00-110.00, WEIGHTED AVERAGE 34.45, WEIGHTED PRICE 106.74; 29 HEAD 43-45 LBS. 100.00-102.00, WEIGHTED AVERAGE 43.34, WEIGHTED PRICE 100.93; 13 HEAD 59 LBS. 86.00, WEIGHTED AVERAGE 59.00, WEIGHTED PRICE 86.00; 10 HEAD 73 LBS. 74.00, WEIGHTED AVERAGE 73.00, WEIGHTED PRICE 74.00.

US#2-3: 25 HEAD 31-34 LBS. 85.00-97.00, WEIGHTED AVERAGE 31.72, WEIGHTED PRICE 88.09; 11 HEAD 61-65 LBS. 60.00-70.00, WEIGHTED AVERAGE 62.82, WEIGHTED PRICE 67.88.

SLAUGHTER: 31 HEAD 20-23 LBS. 80.00-90.00, WEIGHTED AVERAGE 21.23, WEIGHTED PRICE 81.75; 37 HEAD 33-37 LBS. 92.00-124.00, WEIGHTED AVERAGE 35.49, WEIGHTED PRICE 103.26; 61 HEAD 40-48 LBS. 84.00-118.00, WEIGHTED AVERAGE 47.03, WEIGHTED PRICE 97.77; 15 HEAD 52-55 LBS. 100.00-112.00, WEIGHTED AVERAGE 53.20, WEIGHTED PRICE 107.04.

ALL PIGS CONSIGNED TO WED. FEEDER PIG SALE MUST ORIGINATE FROM A QUALIFIED NEGATIVE OR MONITORED HERD.

New Holland Hogs

NEW HOLLAND, PA
NOVEMBER 4, 1996
TODAY 1178
LAST MONDAY 1130
LAST YEAR 1380
TREND: Compared to last Monday barrow and gilts 3.00-3.50 higher.
BARROWS AND GILTS: US 1-2 225-265 lbs 54.25-54.75 US 1 16 head 225 lbs 55.00 US 1-3 225-270 lbs 53.50-54.00 US 2-3 270-295 lbs 51.10-53.25 Couple lots 300-310 lbs 48.25-49.50

HI-MAG Agricultural Lime Spreading HI-CAL

Cash Discount Savings on Delivery
Call Toll Free day and evening
1-800-724-3277
Serving PA, MD, Delmarva, NJ, NY & (LI)

HAY, STRAW & GRAIN SALE
Every Thursday at 12 NOON
Vintage Sales Stables, Inc.
(Rt. 30, 10 miles east of Lancaster in Paradise, PA)
For info.
(717) 442-4181 bus.
(610) 458-8518 home

Here Today, Here to Stay.
Lancaster Stockyards, Inc.
1895-1996 101 Years of Service
Always Open - 24 hours a day, 7 days a week to receive and dispatch livestock.
(717) 394-2611

REGULAR AUCTION SCHEDULE
MONDAY
9:30 AM Sheep, Goats & Calves
9:30 AM Slaughter Bulls, Heifers, Steers & Cows
1:00 PM Slaughter Hogs
WEDNESDAY
6:30 AM Swine Receiving
12 Noon Fall Feeder Cattle Sales: Nov. 20 & Dec. 18
Feeder Sales will be held on Fridays after Jan. 1, 1997
FRIDAYS - Beginning JANUARY 3, 1997
12 Noon Feeder Cattle Sales - every Friday through January
(also accepting consignments of slaughter cattle)
PRIVATE TREATY BALANCE OF THE WEEK

SPECIAL SALE - WED., NOV. 20

- 150 Calves, Steers and Heifers Angus Out Of Maryland
- 50 Calves, Steers and Heifers Charlois Out of Northeast PA
- Load of Calves, Steers and Heifers Hereford Out Of Northwest Pa.
- 250 Other Local Cows Weighing 500 to 800 Lbs.

Active in All Facets of the Trade
All Species of Livestock
Private Treaty and Auction

PENNFIELD GRAIN BANK
PENNFIELD'S HAGERSTOWN GRAIN ELEVATOR (Clear Spring) IS NOW READY TO RECEIVE WET SHELL CORN.
Prices Week Of 11/11/96
Corn **\$2.87 Bu.**
Soybeans **\$6.45 Bu.**
Barley **\$3.65 Bu.**

- No Storage Charges
- Prices Updated Weekly
- Grain Bank Balance Shown On Each Invoice
- No Hidden Charges

For every ton of qualifying dairy feed purchased you will receive one ton of grain back hauled at no charge

penncfield feeds

Lancaster Farming

INDEX
Four Sections

COLUMNS
Now is the Time..... A10
On Being A Farm Wife..... B 3
Taking Time..... B 4
Family Living Focus..... B11
All Gardens..... B 5
Ida's Notebook..... B17
Poultry Pointers..... D 7
It's Showtime..... C 2

DEPARTMENTS
Editorial..... A10
Farm Calendar..... A10
Futures..... A16
Mailbox Markets..... B19
Sale Reports..... B25
Public Auction Register..... B32
Business News..... C 4
Classified Ads..... C 5, D 7

DAIRY
Chester Holstein Club..... A26
DHIA Focus..... A32

HOME AND YOUTH
Homestead Notes..... B 2
Home On The Range..... B 6
4-H Happenings..... B16
Cook's Question Corner..... B 8
Kid's Korner..... B10
FFA Happenings..... B18
You Ask, You Answer..... B26

FEATURES
Pa. Grangers..... A19
Ridge Presents Award..... A20
Chester Extension..... A21
State Grange..... A24
Frederick Farm Bureau..... A28
Gift Calf..... A31
Clover Hill Farm..... B 2
Adams 4-H Recognition..... B 7
Lancaster F.W. Convention B15