

Estimated Daily Livestock Slaughter

Under Federal Inspection

November 5, 1996

	CATTLE	CALVES	HOGS	SHEEP
WEDNESDAY 11/05/96 (EST)	130,000	5,000	368,000	16,000
WEEK AGO (EST)	127,000	7,000	363,000	15,000
YEAR AGO (ACT)	133,000	6,000	365,000	18,000
WEEK TO DATE (EST)	256,000	11,000	712,000	31,000
SAME PD LT WK (EST)	250,000	14,000	712,000	29,000
SAME PD LT YR (EST)	261,000	12,000	719,000	33,000

PREVIOUS DAY ESTIMATED TUESDAY, STEER AND HEIFER 94,000, COW AND BULL 32,000.

***REVISION ON MONDAY'S HOG SLAUGHTER...344,000.

Central U.S.

Carlot

Beef Report

November 6, 1996

Report supplied by USDA

USDA NATIONAL CARLOT BEEF REPORT (INCLUDES MAJOR PRODUCTION AREAS IN THE MIDWEST AND TEXAS) AS OF 3 P.M.

COW AND BULL CARCASS

7.0 LOADS

FOB OMAHA

COMPARED TO TUESDAY'S 3 P.M. REPORT: UTILITY CARCASSES 1.50 LOWER; CUTTER 1.00 LOWER. DEMAND LIGHT TO MODERATE FOR HEAVY OFFERINGS.

CUTTER 2-4 450 LBS. AND UP, 2.0 LOADS, RANGE 49.00, LATEST ESTB. MKT. 49.00.

UT,BNG 1-3 400 LBS. AND UP, 3.0 LOADS, RANGE 53.00, LATEST ESTB. MKT. 53.00.

CUTTER 1-2 350 LBS. AND UP, 2.0 LOADS, RANGE 54.00, LATEST ESTB. MKT. 54.00.

BULLS YG1 500 LBS. AND UP,

UNQUOTED.

COW AND BULL CARCASSES

CAF WEST COAST

LOADS REPORTED

COMPARED TO LAST WEEK: MARKET FOR WEEK ENDED NOV. 1, 1996.

UT,BNG 1-3 400 LBS. AND UP, RANGE 54.00.

CUTTER1-2 350 LBS. AND UP, RANGE 54.00.

BONELESS PROCESSING BEEF/

BEEF TRIMMINGS

156.0 LOADS REPORTED

FRESH LEAN BONELESS BEEF 2.00-4.50 LOWER; 85% 2.00-2.50 LOWER; 75% 1.50-3.50 LOWER; 65% MOSTLY STEADY TO FIRM. DEMAND LIGHT TO MODERATE FOR MODERATE TO HEAVY OFFERINGS. BEEF TRIMMINGS GENERALLY WEAK ON LIGHT DEMAND AND LIGHT TO MODERATE OFFERINGS.

FOB OMAHA BASIS

90% FR, 27 LOADS, RANGE 76.0-76.5 WT. AVG. 76.17.

90% FZ, 8 LOADS, RANGE 80.5, WT. AVG. 80.50.

85% FR, 13 LOADS, RANGE 70.5-71.0, WT. AVG. 70.92.

85% FZ, 2 LOADS, RANGE 75.5, WT. AVG. 75.50.

75% FR, 12 LOADS, RANGE 67.0-70.0, WT. AVG. 69.50.

75% FZ, UNQUOTED.

65% FR, 12 LOADS, RANGE 62.0-63.5, WT. AVG. 62.63.

65% FZ, UNQUOTED.

50% FR, 40 LOADS, RANGE 50.00-53.00, WT. AVG. 51.85.

50% FZ, 1 LOAD, RANGE 60.00, WT. AVG. 60.00.

50% BX, UNQUOTED.

BULL 92-94, UNQUOTED.

FOB EAST TX & OK

90% FR, 7 LOADS, RANGE 76.5-77.0, WT. AVG. 76.86.

90% FZ, 12 LOADS, RANGE 80.5, WT. AVG. 80.50.

85% FR, 85% FZ, 75% FR, 75% FZ, 65% FR, AND 65% FZ, ALL UNQUOTED.

CAF NORTHEAST AREAS

90% FR, 19 LOADS, RANGE 79.0-80.5, WT. AVG. 79.68.

90% FZ, UNQUOTED.

85% FZ, 3 LOADS, RANGE 74.00.

85% FZ, 75% FR, 75% FZ, 65% FR, AND 65% FZ, UNQUOTED.

CAF WEST COAST BASIS

WEEK ENDED 11/01/96

90% FR, RANGE 82.0, WT. AVG. 82.00.

90% FZ, UNQUOTED.

85% FR, RANGE 73.0-74.0, WT. AVG. 73.60.

85% FZ, RANGE 77.0, WT. AVG. 77.00.

75% FR, UNQUOTED.

75% FZ, UNQUOTED.

65% FR, RANGE 62.0-62.75, WT. AVG. 62.44.

65% FZ, UNQUOTED.

50% FR, RANGE 53.75-54.75, WT. AVG. 54.21.

50% FZ, UNQUOTED.

ABCDE AFTER QUOTES REPRESENTS DAYS SINCE LAST ACTUAL MARKET TEST. QUOTES ARE DROPPED AFTER 5 DAYS OF NO TEST OR BEFORE IF THEY NO LONGER REFLECT CURRENT MARKET CONDITIONS.

SOURCE: USDA MARKET, DES MOINES, IA.

Eighty-Four

Livestock

EIGHTY FOUR, PA

NOVEMBER 4, 1996

CATTLE 535... PDA ...Compared with last week's sale...cows steady, bulls steady to 1.50 lower.

STEERS: one Choice 1050 lbs. 66.50, Standard 35.50-47.00.

HEIFERS: one Choice 1045 lbs. 65.50, Standard 35.00-47.50.

COWS: Breaking Utility and Commercial 30.50-34.50, Cutter and Boning Utility 26.00-30.00, Canner and Low Cutter 18.00-25.00. Shells down to 10.00.

BULLS: Yield Grade No. 1 1150/1800 lbs. 33.00-40.00, few No. 2 950/2150 lbs. 25.00-33.00.

FEEDER CATTLE: STEERS: Medium & Large Frame No. 1 300/700 lbs. 40.00-59.00, Medium & Large Frame No. 2 250/850 lbs. 21.00-41.00; HEIFERS: Medium & Large Frame No. 1 250/825 lbs. 35.00-48.00, Medium & Large Frame No. 2 225/600 lbs. 18.00-35.00; BULLS: Medium & Large Frame No. 1 275/775 lbs. 41.00-59.00, Medium & Large Frame No. 2 225/900 lbs. 18.00-40.00.

CALVES 150...Farm calves steady to 7.50 lower.

VEALERS: few Choice 150/195 lbs. 52.00-60.00, Good 130/280 lbs. 25.00-44.00, Standard and Good 90/110

lbs. 17.00-20.00, 65/85 lbs. 14.00-20.00, Utility 55/80 lbs. 5.00-13.00.

FARM CALVES: No. 1 Holstein bulls 90/125 lbs. 47.50-70.00, No. 2 90/120 lbs. 20.00-45.00; few No. 1 Holstein heifers 90/110 lbs. 92.00-127.50, No. 2 75/100 lbs. 27.50-42.50. Beef cross bulls and heifers 85/125 lbs. 20.00-45.00.

HOGS 12...BARROWS AND GILTS: US 1-3 225/250 lbs. 53.00.

SOWS: US 1-3 300/625 lbs. 38.50-52.50.

BOARS: one 440 lbs. 41.25.

FEEDER PIGS 17...US 1-3 42 lbs. 20.50. --- per head.

SHEEP 137...SLAUGHTER LAMBS: High Choice and Prime 110/120 lbs. 70.50-75.00, Choice 80/100 lbs. 73.00-82.50, 55/75 lbs. 80.00-93.00, Good and Choice 80/110 lbs. 57.50-70.00.

FEEDER LAMBS: Good and Choice 40/50 lbs. 74.00-100.00.

GOATS 22...Large 100/125 lbs. 31.00-65.00-per cwt, Medium 32.00-42.00, Small 20.00-29.00, Large Kids 10.00-15.00. --- per head.

Dewart Livestock

Dewart, Pa.

Monday, November 4, 1996

Report Supplied by Auction

STEERS: 50.00-65.75.

HEIFERS: TOO FEW TO QUOTE.

GOOD COWS: 28.00-37.75.

CANNERS AND CUTTERS 20.00-28.00.

BULLS: 35.00.

VEAL 90-190 LBS. 80.00-110.00, 70-90 LBS. 30.00-80.00.

HOGS: NONE IN SALE.

SOWS: 46.00-50.00.

FEEDER PIGS: 10.00-21.00 PER HEAD.

New Holland Horses

New Holland Sales Stables

New Holland, PA

Monday, November 4, 1996

Report Supplied By Auction

274 HEAD. MARKET FAIRLY STRONG.

WORK HORSES 400.00-950.00.

DRIVING 400.00-925.00.

RIDING 500.00.

REGISTERED RIDING 1575.00.

KILLERS, HEAVYWEIGHTS 500.00-925.00, LIGHTWEIGHTS 200.00-310.00.

PONIES 200.00-575.00.

LARGE PONIES 300.00-625.00.

Forney Longenecker

Vice President/Financial Consultant
Commodities

SMITH BARNEY 717-295-8914
800-441-1997

A Member of TravelersGroup

SMITH BARNEY INC.

29 East King Street

Suite 200

Lancaster, PA 17602-2852

ATTENTION

Cattle Feeders,

Backgrounders &

Cow/Calf Managers!

LANCASTER'S FRIDAY

FEEDER AUCTION

IS BACK

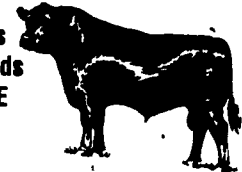
Walter M. Dunlap & Sons

at the Lancaster Stockyards

will offer FEEDER CATTLE

SALES on FRIDAYS

at 12:00 NOON



* After Jan. 1, we will also be accepting consignments of slaughter cattle on

FRIDAYS

* The Wednesday cattle auction will be discontinued after Jan. 1, 1997

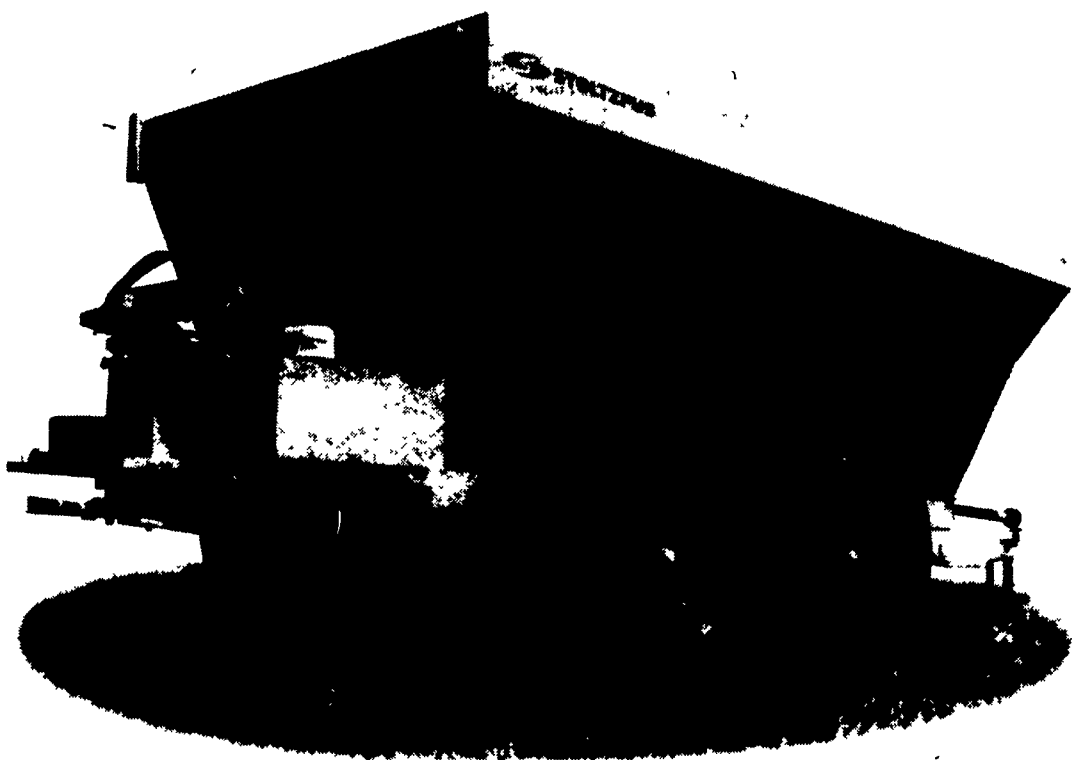
Here Today  Here to Stay

Walter M. Dunlap & Sons

Phone: 717-397-5136

Livestock Marketing for the 21st Century

Sometimes You Need A Spreader Built Like A Tank.



When spreading stockpiled lime, for example. The Stoltzfus Wet Lime Spreader is likely the most powerful spreader of its kind on the market today. You see, we've been building them since 1945, and farmers are still using Stoltzfus Wet Lime Spreaders they've had for 20, even 30 years. Our special drag chain is 4 times stronger than stainless steel, and handles frozen and heavy stockpiled lime with ease. Plus, for spreading compost, composted sludge, poultry litter

and certain fertilizers, the WLS is without equal for sheer volume spreading. We call that performance. You'll call it terrific.

We hope you compare a Stoltzfus WLS with other spreaders. It makes us look even better. Price? Sure we may be a little more. But when you end up replacing cheaper units in a few short years, what have you saved? Stoltzfus quality always pays for itself many times over.

Just how tough is a Stoltzfus WLS? Plenty tough. Call today. We'll tell you where to find the dealer nearest you, and send you free literature to inspect.

- Two-ton, five-ton, eight-ton models
- PTO, 540 rpm or 1,000 rpm
- Two-speed conveyor chain
- Leaf spring suspension
- Dual 24" spinners
- Spreads 40' effectively
- One-sided spreading capability
- Truck-mounted models available



STOLTZFUS

1-800-843-8731

Morgan Way, P.O. Box 527, Morgantown, PA 19543