

Eighty-Four Livestock

**EIGHTY FOUR, PA
OCTOBER 28, 1996**

CATTLE 343... PDA ... Compared with last week's sale...cows steady to 3.50 lower, bulls steady to 3.00 lower.
STEERS: one Choice 1065 lbs. 65.00, few Select 49.00-57.00, few Standard 42.00-48.50.
HEIFERS: few Choice 900/1075 lbs. 61.50-66.00, Standard 35.00-44.50.
COWS: Breaking Utility and Commercial 30.00-33.00, few 34.75, Cutter and Boning Utility 26.00-29.00, Canner and Low Cutter 20.00-25.75. Shells down to 12.00.
BULLS: Yield Grade No. 1 1085/1700 lbs. 35.00-41.50, No. 2 950/1860 lbs. 27.00-34.50.

FEEDER CATTLE: STEERS: Medium & Large Frame No. 1 400/925 lbs. 42.50-54.00, Medium & Large Frame No. 2 300/750 lbs. 27.50-39.50; **HEIFERS:** Medium & Large Frame No. 1 320/800 lbs. 37.00-49.00, Medium & Large Frame No. 2 250/750 lbs. 24.00-35.00; **BULLS:** Medium & Large Frame No. 1 250/850 lbs. 37.50-50.00, Medium & Large Frame No. 2 250/850 lbs. 22.00-39.00.

CALVES 149... Farm calves steady to 10.00 lower.
VEALERS: Choice 150/295 lbs. 50.00-63.00, Good 135/285 lbs. 25.00-44.00, Standard and Good 95/110 lbs. 20.00-26.00, Utility 65/85 lbs. 18.00-26.00, 65/85 lbs. 15.00-18.00.
FARM CALVES: No. 1 Holstein bulls 95/125 lbs. 55.00-70.00, No. 2 85/120 lbs. 27.50-52.50; few No. 1 Holstein heifers 85/115 lbs. 85.00-140.00. Beef cross bulls and heifers 80/110 lbs. 27.00-29.00.
HOGS 20...BARROWS AND GILTS:

US 1-3 250/260 lbs. 47.00-50.00, US 2-3 290/300 lbs. 45.00-47.00.
SOWS: US 1-3 415/530 lbs. 43.50-49.00.
BOARS: 230/590 lbs. 38.00-39.25.
FEEDER PIGS 40... US 1-3 20/25 lbs. 13.50-15.00, 30/60 lbs. 16.50-28.50. --- per head.
SHEEP 174... Slaughter lambs steady to 10.00 higher.
SLAUGHTER LAMBS: High Choice and Prime 115/130 lbs. 70.00-80.00, Choice 80/95 lbs. 80.00-95.00, 50/70 lbs. 90.00-99.00, Good and Choice 75/100 lbs. 71.00-79.50.
FEEDER LAMBS: Good and Choice 50/70 lbs. 69.00-82.00.
GOATS 25... Large 45.00-60.00-per cwt, Medium 26.00-45.00, Small 10.00-25.00, Small Kids 2.00-10.00. --- per head.

Middleburg Livestock

**MIDDLEBURG, PA
OCTOBER 29, 1996**

CATTLE 404... SUPPLIED BY THE AUCTION...steers and cows steady, cows and bulls 2.00 lower.
STEERS: few High Choice and Prime 1200/1400 lbs. 71.50-74.00, Choice 1150/1350 lbs. 65.00-71.50, Select 58.00-65.00, Standard 48.00-58.00.
HOLSTEINS: High Choice and Prime 1150/1300 lbs. 57.00-62.00, Choice 1100/1300 lbs. 54.00-57.00, Select 48.00-54.00, Standard 40.00-48.00.
HEIFERS: High Choice and Prime 1050/1200 lbs. 68.00-72.50, Choice 1050/1300 lbs. 62.00-68.00, Select 55.00-62.00, Standard 40.00-55.00.
COWS: Breaking Utility and Commercial 34.00-37.00, Cutter and Boning Utility

30.00-34.00, Canner and Low Cutter 25.00-29.00. Shells down to 15.00.
BULLOCKS: Choice 40.00-45.00, Select 37.00-40.00.
BULLS: Yield Grade No. 1 1200/1900 lbs. 37.00-40.00, No. 2 1100/1200 lbs. 32.00-38.00.
FEEDER CATTLE: STEERS: 400/500 lbs. 35.00-48.00, 500/650 lbs. 36.00-50.00; **HEIFERS:** 400/500 lbs. 30.00-44.00, 500/650 lbs. 30.00-45.00; **BULLS:** 400/500 lbs. 22.00-38.00, 500/700 lbs. 27.00-36.00.
CALVES 180... FARM CALVES: No. 1 Holstein bulls 95/115 lbs. 68.00-78.00, No. 2 95/120 lbs. 45.00-65.00; No. 1 Holstein heifers 100/110 lbs. 120.00-170.00, No. 2 85/100 lbs. 45.00-100.00.
HOGS 292... (10/28 & 29/96)...Bulk of supply sold on Monday and reported by the auction.
BARROWS AND GILTS: few US 1-2 220/240 lbs. 52.50-54.00, US 1-3 200/260 lbs. 50.00-52.50, US 2-3 220/270 lbs. 48.00-50.50.
SOWS: US 1-3 400/500 lbs. 45.00-48.00, 500/600 lbs. 48.00-51.00, Medium 325/400 lbs. 43.00-46.00.
BOARS: all weights 36.00-40.00.
FEEDER PIGS 158... US 1-3 20/30 lbs. 18.00-25.00, 35/40 lbs. 25.00-28.00. --- per head.
SHEEP 31... SLAUGHTER LAMBS: High Choice and Prime 25/30 lbs. 110.00-135.00, Choice 75/90 lbs. 69.00-79.00.
SLAUGHTER SHEEP: 22.00-38.00.
GOATS 16... Sold by the head.
BILLIES: Large 45.00-75.00, Medium 30.00-45.00, Small 20.00-30.00.

Aberdeen Sales Company, Inc.

Complete Auction & Appraisal Service
Churchville, Md.

Report Supplied by Auction
Wednesday, October 30, 1996
SLAUGHTER STEERS: MARKET STRONGER. CHOICE 2-4 1100-1400 LBS. 70.00-73.50; SELECT & LOW

Trucks Available
To Haul Feeder Cattle
Out Of VA

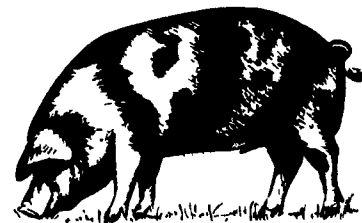
Vintage Sales Stables Inc.
Paradise, PA
(717)768-8204 Days
(610)458-8518 or 5060 Eves.

CHOICE 1000-1500 LBS. 64.00-71.00; HOL. STEERS HI CHOICE & PRIME 1250-1400 LBS. 58.00-62.00; CHOICE 1200-1500 LBS. 55.00-59.00; SELECT, ALL WEIGHTS 45.00-53.00.
SLAUGHTER HEIFERS: MARKET STRONGER. CHOICE & PRIME 950-1300 LBS. 68.00-72.00; SELECT ALL WEIGHTS 900-1400 LBS. 48.00-55.00.
COWS: MARKET 3.00 LOWER. BRK. UT. & COMM. 2-4 BULK 34.00-37.00; HI DRESSING 37.00-40.00; CUTTER & BON. UT. 29.00-33.00; HI DRESSING 33.00-37.00; CANNER & CUTTERS 23.00-28.00; LOW DRESSING 21.00 AND DOWN.
BULLS: MARKET 2.00 LOWER. ALL WEIGHTS 1100-1900 LBS. 34.00-45.00.
VEAL CALVES: MARKET 4.00 LOWER. CHOICE AND PRIME 200-400 LBS. 53.00-79.00; HI GOOD AND LOW CHOICE ALL WEIGHTS 39.00-48.00.
FARM CALVES: MARKET 15.00 LOWER. HOL. BULLS 100-125 LBS. 54.00-65.00; HOL. BULLS 85-95 LBS. 42.00-58.00; HOL. HEIFER CALVES 100-120 LBS. 126.00-163.00; SMALL FRAME 70-105 LBS. 25.00-97.00; SLAUGHTER CALVES ALL WEIGHTS 15.00-25.00.
FEEDER CATTLE: MARKET STEADY. BULLS & STEERS 400-900 LBS. 39.00-62.00; HEIFERS 300-700 LBS. 33.00-47.00.
LAMBS: MARKET 3.00 LOWER. CHOICE & PRIME 90-110 LBS. 76.00-84.00; LIGHTER LAMBS 63.00-94.00; EWES - HEAVY 23.00-29.00, LIGHT 27.00-39.00.
GOATS: MARKET STEADY. SMALL 15.00-30.00; MEDIUM 30.00-50.00; LARGE 70.00-105.00.
HOGS: MARKET LOWER. 210-250 LBS. 49.00-51.00; 255-300 LBS. 46.00-50.00; SOWS - HEAVY 39.00-48.00; SOWS - LIGHT 34.00-43.00; BOARS ALL WEIGHTS 31.00-37.00.

STEERS CHOICE 1040-1420 LBS. 64.25-69.50, ONE AT 70.75, SELECT 57.50-64.00 HOLSTEINS; HIGH CHOICE AND PRIME 1410-1610 LBS. 64.00-67.25, CHOICE 1270-1790 LBS. 59.00-64.75, SELECT 50.00-57.75, STANDARD 34.75-45.00.
HEIFERS: CHOICE 1060-1420 LBS. 64.25-69.50, SELECT 57.50-62.25.
COWS: BREAKING UTILITY AND COMMERCIAL 33.00-38.75, CUTTER AND BONING UTILITY 26.50-33.25, CANNER AND LOW CUTTER 22.00-29.00, SHELLS 11.00-21.00.
BULLS: FEW YG #1 & #2 1010-2240 LBS. 30.75-37.00.
FEEDER CATTLE: M&L, 1&2 STEERS AND HEIFERS 410-492 LBS. 40.00-48.00.
CALVES: 145. STANDARD AND GOOD 80-125 LBS. 22.00-34.00, UTILITY 55-115 LBS. 9.00-22.00.
FARM CALVES: #1 HOLSTEIN BULLS 95-125 LBS. 55.00-80.00, #2 BULLS 85-15 LBS. 35.00-65.00, #1 HOLSTEIN HEIFERS 90-110 LBS. 85.00-165.00.
HOGS: 146. BARROWS AND GILTS STEADY WITH LAST WEEK. BARROWS AND GILTS US#1-3 227-272 LBS. 50.00-53.50.
SOWS: US#1-3 490-690 LBS. 45.00-49.00, US#1-3 315-490 LBS. 40.00-44.50.
BOARS: ALL WEIGHTS, 32.50-37.00.
FEEDER PIGS: 62. US#1-3 35-60 LBS. 82.50-105.00 PER CWT., ONE LOT 20 LBS. AT 32.00 PER HEAD.
SHEEP: 49. CHOICE SLAUGHTER LAMBS 25-55 LBS. 110.00-175.00, 70-85 LBS. 82.50-97.50, 90-115 LBS. 62.50-72.50, FEW YEARLINGS 39.00-50.00, SLAUGHTER SHEEP 20.00-30.00.
GOATS: 21. MEDIUMS 30.00-67.50, KIDS 20.00-42.00 PER HEAD.
REPORT SUPPLIED BY AUCTION...BILL WEIST, AUTHOR.

Leesport Livestock

Leesport, PA
Wednesday, October 30
Report Supplied by PDA
CATTLE 283...SUPPLY INCLUDED 90 FED STEERS AND HEIFERS, 62 FEEDER CATTLE. COMPARED WITH LAST WEEK...STEERS 2.00 HIGHER, COWS STEADY TO WEAK.



HAY, STRAW & GRAIN SALES

Hay And Straw Sales
Will Start At 10 A.M.
Every Wed.

GOOD'S AUCTION
11 North Maple Ave.
Leola, PA 17540
717-656-8911
717-656-9558

Trucks Available
To Haul Feeder Cattle
Out Of VA

Vintage Sales Stables Inc.
Paradise, PA
(717)768-8204 Days
(610)458-8518 or 5060 Eves.

PRECISE CONCRETE WALLS, INC.

For All
Your Concrete
Walls And
Construction
Needs

Agriculture - Residential - Commercial

- Buildings • Basement • Floors
- Retaining Walls • Footer
- SCS Approved Manure Storage Pits
- All Types Of Flat Work

Specializing In
Manure Storage
Round or Rectangular,
In Ground or
Above Ground



12' x 83' Diameter Circular Manure Storage

Invest In Concrete, Quality Work That Will Last A Lifetime

CALL FOR **FREE** ESTIMATES
AND SEE HOW AFFORDABLE
CONCRETE WALLS CAN BE

CONTACT
ROY SENSENIG
717-355-0726

PRECISE CONCRETE WALLS, INC.

601 Overly Grove Road, New Holland, PA 17557



LOOK
FOR THE STANDARD

Certified Crop Adviser

CCA sets a standard of excellence in agricultural field & crop management. The CCA Program was designed to give you, the farmer, a roadmap to integrity and expertise.

Not everyone that comes in your gate is qualified to give you advice. What makes the Certified Crop Adviser different?

CCA REQUIREMENTS

Education	Minimum of a high school diploma. Reduced experience requirements with college degree.
Experience	4 years crop advising with HS degree; 3 years with 2-year associate degree in agriculture; 2 years with B.S. or higher degree in agriculture.
Exam	National and State CCA exams covering soil fertility, soil & water, pest management and crop production.
Continuing Education Units (CEUs)	40 hours of CEU units on a 2-year cycle. Minimum of 10 CEUs per year.
Code of Ethics	Must sign and agree to strict Code of Ethics. (Will lose CCA certification if not adhered to)
References	Two (employer & client)

ASK FOR THE STANDARD. ASK FOR A CCA!

FOR INFORMATION CALL
717-392-7577