

Animal Housing Expo At Lebanon Grounds Oct. 29-30

(Continued from Page A28)

and workers, as well as cash flow and farm profits, so it's important to get as much information as you can to make the best decision for your operation.

"The Animal Housing Expo gives farmers in the Northeast an opportunity to visit with about 40 different commercial exhibitors who can supply the products and services they might need," McFarland said.

"Participants also can hear presentations by national and local animal housing experts, observe a variety of educational demonstrations and exhibits, and share ideas with other farmers."

A variety of topics and speakers will be featured during the event, starting at 10 a.m. on Oct. 29, when Mike Williams of North Carolina State University will discuss practical solutions to control cattle, poultry, and swine odors. At 11 a.m., Doug Reinemann of the University of Wisconsin will discuss options for a milking parlor for every budget.

Also at 11 a.m., Kenneth Kephart, professor of animal science at Penn State, will present a swine demonstration. Dale Moore, extension veterinarian at Penn State, will give a hoof trimming demonstration at 12:30 p.m. At 1:30 p.m., Tim Royer of Timber Tech Engineering Inc., of Womelsdorf, will discuss the process of obtaining permits for agricultural expansion.

At 10 a.m. on Oct. 30, Mike Brubaker of Brubaker Agronomic Consulting Service of Ephrata, and Robert Graves, professor of agricultural engineering at Penn State, will examine nutrient management issues for cattle, poultry, and swine producers.

At 11 a.m., Don Rodgers of First Pioneer Farm Credit, ACA, in Enfield, Conn., will discuss making agricultural expansions fit in with family business goals and plans.

At 12:30 p.m., Brian Reed of Agricultural Veterinary Associates in Manheim will give a hoof trimming demonstration. At 1:30

p.m., Robert Graves will discuss greenhouses and dairy shelter alternatives.

"Producers who want to expand or remodel their facilities and become more efficient and agribusiness people who are interested in animal housing facilities and equipment won't want to miss the Animal Housing Expo," McFarland said.

For more information about the Expo, contact Dan McFarland at (717) 840-7408.

Animal Housing Expo Addresses Nutrient Management, Odors and Building Permits

When expanding or remodeling their livestock, dairy or poultry facilities, farmers need to be concerned about building permits, odors, and nutrient management. These issues will be addressed at this year's Animal Housing Expo by: Mike Williams of North Carolina State University; Mike Brubaker of Brubaker Agronomic Consulting Service in Ephrata; Robert Graves of Penn State University; and by Tim Royer of Timber Tech Engineering in Womelsdorf.

The Animal Housing Expo is

sponsored by Penn State Cooperative Extension and agri-businesses. It will be held October 29-30 at the Lebanon Fairgrounds, Lebanon, Pa.

The event also features about 40 commercial exhibits, educational demonstrations and displays, and other presentations related to animal care and housing.

For more information contact your local Cooperative Extension office.

Family Business Goals To Be Discussed At Animal Housing Expo

Family values and goals should help dictate the goals of the family's farm business, according to Don Rodgers, First Pioneer Farm Credit, ACA, Enfield, Conn. As a speaker at the Animal Housing Expo, he will challenge farmers to think about family goals as they plan the future of their farm business and contemplate remodeling and expansion decisions.

The Animal Housing Expo will be held October 29-30 at the Lebanon Fairgrounds, Lebanon, Pa. It is sponsored by Penn State Cooperative Extension and agri-businesses to help farmers in the Northeast learn more about remodeling and expanding animal housing facilities.

The Expo features about 40 commercial exhibits, presentations by nationally-known and local experts, and educational demonstrations and displays.

For more information contact your local Cooperative Extension office.

Animal Housing Expo Addresses Greenhouse Shelters and Parlor Alternatives

If you are thinking about

remodeling, expanding or building new dairy facilities it is helpful to study a variety of options.

At this year's Animal Housing Expo, Doug Reinemann, University of Wisconsin, will talk about "Parlors for Every Budget." "Greenhouses and Other Dairy Shelter Alternatives" will be addressed by Robert Graves, Penn State University.

In addition, there will be a variety of commercial exhibits, demonstrations, displays and other presentations on topics related to animal care and housing.

The Expo is sponsored by Penn State Cooperative Extension and agri-businesses, and will be held October 29-30 at the Lebanon Fairgrounds, Lebanon, Pa.

For more information contact your local Cooperative Extension office.

Commercial Exhibits At Animal Housing Expo

Are you thinking about remodeling, expanding or building new livestock, dairy or poultry facilities? Are you interested in learning more about new products and concepts related to animal housing and construction of facilities? Do you want to make contact with people who can provide the products and services you need? If so, you should attend the Animal Housing Expo, October 29-30 at the Lebanon Fairgrounds, Lebanon, Pa.

The Expo features about 40 commercial exhibits in addition to numerous presentations and educational demonstrations and displays.

The event is sponsored by Penn State Cooperative Extension and agri-businesses. For more information, contact your local Cooperative Extension Office.

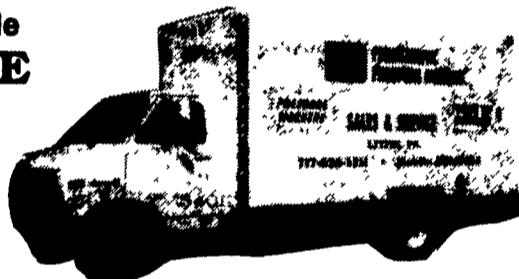
STOP and VISIT With Us At The



ANIMAL HOUSING EXPO

October 29-30 @ Leb. Expo Complex

We Provide ON THE FARM SERVICE CALLS

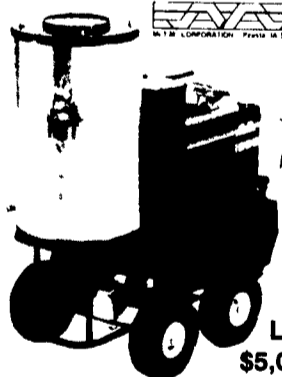


ANIMAL HOUSING EXPO

October 29-30, 1996 Lebanon Fairgrounds

2000 PSI Hot Water Units

In Stock Ready For Delivery!



LIST \$5,025.00

EXPO SPECIAL \$3,495.00 Model HB2004

The Best Thing Since Sliced Bread, or Should I Say Pork Chops IS THE

Turbo-Laser



22060 Model Rated Up To 5000 PSI @ 194° F List \$176.50

Show Price \$95.00

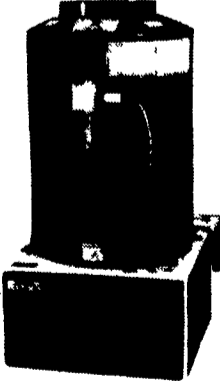
22040A Models Rated Up To 3500 PSI @ 194° F List \$126.00

Show Price \$77.00

GIVE YOUR ORDER AT THE ANIMAL HOUSING EXPO

L.P. FIRED HOT BOX

IN STOCK



Specification HP3000S

GPM 5 GPM
PSI 3000 PSI
Voltage Millivolt
Fuel Type LP
Dimensions: 23"Lx23"Wx48"H
App. Wt. 300

"General Pump" Roto Max Nozzles

List \$92.05

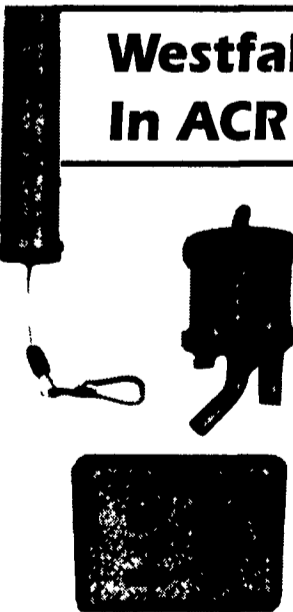
Show Price \$49.95 Special

Orders Must Be Given The Week Of The Expo For Advertised Prices.

WESTFALIA HIGH-TECH DAIRYING

Automatic Take-Off Is One Of The Best Labor Saving Options For Your Dairy Operation

Westfalia Leads The Rest In ACR Technology



ACR-Stainless Steel - Durability & Reliability



Call Us or See Us at the Animal Housing Expo and ask us about our GREAT FALL SPECIALS!

Animal Housing Expo October 29-30, 1996 Lebanon Fairgrounds

PPS

PROGRESSIVE PRESSURE SYSTEMS
133A ROTHVILLE STATION RD.
LITITZ, PA 15743
717-626-5511

WESTFALIA THOMPSON INC.
DAIRY AND AGRI-BUSINESS EQUIPMENT SALES & SERVICE
CENTRAL SERVICE CENTER
NORTHERN SERVICE CENTER
RD 1 BOX 407
BELLEVILLE, PA 17004
717-667-6299