

PUBLIC AUCTION

**VALUABLE REAL ESTATE
RANCH HOUSE ON 6.9 ACRES
PERSONAL PROPERTY, GUNS & TOOLS
FRIDAY, OCTOBER 25, 1996
Auction Time 3 P.M. Real Estate 4 P.M.**

LOCATION: 501 Pleasant Valley Rd (Fivepointville) Rt 897 North from Terra Hill to Fivepointville to stop sign Turn right onto Pleasant Valley Rd to Property on right Brecknock Twp., Lancaster County



Real Estate: One owner custom built brick & frame with siding, one level house only 9 years old. Eat-in kitchen w/oak raised panel cabinets, dishwasher & range, large living room, 1st floor laundry, 2 bedrooms, 2 full baths, full daylight basement w/partially finished family room w/Harmon wood, coal stove, enclosed sun porch. Electric baseboard heat & central air conditioning. 1 car attached garage. On lot septic & well. Tract of land consists of 6.9 acres w/approx 3 acres woodland, balance pasture, tree grove, lawn & garden area. Southern boundary along Muddy Creek. **Terms:** 10% down, balance 60 days. Inspection by appointment or open house, Sat., October 12 & 19 from 1-4 P.M. For details, call auctioneers - 733-1006 or 445-4309.

NOTE: This is a very unique one owner home on spacious 6.9 acre tract. Excellent rural location. Close to 222 Bypass & Turnpike Garden Spot School.

Personal Property - Tools

Sofa & Chairs, TV Stand, Wooden Cabinets, Cedar Wardrobe, Cedar Chest, Bookcase, Lamp Stand, Harmon Wood/Coal Stove, Wooden Shelving, Warm Morning Gas Heater, Treadmill, Metal Cabinets, Dehumidifier, Window Fan, Ryobi 8 1/2" Radial Arm Saw, Craftsman 8" Table Saw, Craftsman & B&D Circular Saws, Wet/Dry Vac, Cleaner, Bench Vise & Workbench, Bench Grinder,

Alum Ext Ladder, Stepladder, Wheelbarrow, Weed Eater, Assorted Hand Tools, Solo 616 Chain Saw, Garden Hoses, Pruners, Axe & Other Sm Tools

GUNS & RELOADING EQUIPMENT - Sako 222 Cal. AKO w/Weaver Classic Scope 3x9 & Extra Clip; Rem 22 Cal Mod 341 Sportmaster w/Tube, Ithaca 20 Ga, Double Barrel, Bushnell Sentry 2 Spotting Scope 20x50, Bushnell 8x30 Binoculars, Cedar 8 Gun Cabinet w/Storage, Pacific Reloader, Hollywood Powder Measure, Wilson Case Trimmer w/Shell Holders, Assorted Dies including - 243, 222, 257, 6MM, 22 Varminter, Case Gauge, Bullet Puller, Assortment of Powders, Browning Wetstone, Assorted Fishing Reels, Old Woraway Spinning Rod, Fenwick Pack Rod, Other Fishing Equipment, plus other items.

NOTE: Reason for auction. The Youndt's are relocating to retirement village. Auction will begin w/sm tools & household items followed by guns & fishing equip. Terms are cash or good PA check. Food Stand

**Terms by
LESTER L. & THERESA E. YOUNDT
717-445-4153**

Auction conducted by
Randal V. Kline, Lloyd Kreider
Roy Good, Jr., Auctioneers AU2116L
717-445-4309



PUBLIC AUCTION

OF
REAL ESTATE AND EQUIPMENT

Saturday, November 2nd at 10:30 a.m.

Real Estate will be sold at 11:00 a.m.

From Reading Rt. 61 N to Rt. 895E, take Rt. 443E, right on Rt. 309, left on Dairy Rd, left on Wash Creek Rd. Look for signs, West Penn Twp, Schuylkill Co.



PARCEL 1: 2-1/2 story frame house w/siding. 1st floor has modern kit., living room; 2nd floor has 3 BR's and bath; attic storage; enclosed back porch; full basement; shingle roof; convector hot water heat; well & on-site septic system. House has recently been updated.

BANK BARN frame w/steel siding, frame barn, storage shed and garage, all on 30± acre of land.

PARCEL 2: 116± total acres, 80 tillable, 36 woodland.

PARCEL 3: Approximately 20± acres of mostly open farmland with gentle slope, 1200' of road frontage.

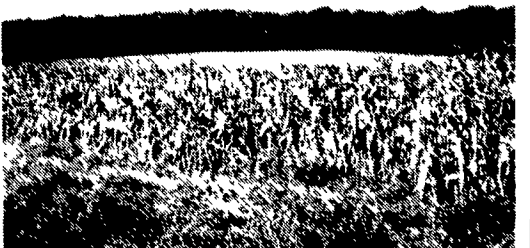
PARCEL 4: 2-1/2 story frame house w/siding. 1st floor has 3 rooms, kit, laundry & bath; 2nd floor has 4 BR's & bath; attic storage; full basement; oil hot water heat; well and on-site septic system.

2 STORY BANK BARN block & farm w/steel siding, 3 yr. old metal roof, garage, utility shed all on 3.2 acres of land.

PARCEL 5: 2-1/2 story frame house. 1st floor has kit, dining room, living room, bath; 2nd floor has 3 BR's & bath, attic storage; full basement, front porch; shingle roof, oil and wood hot water heat.

Block 4 bay garage, 3 bay garage w/steel siding, both w/metal roofs.

3 layer production units, 82,000 capacity all on 60± acres.



PARCEL 6 27 acres w/12x70 mobile home, mostly wooded with stream.

PARCEL 7: 25± total acres, 10 farmland, 10 woodland.

PARCEL 8: Brick ranch house on 1 acre w/living room, dining room, kit, 3 BR's, bath, full basement, 2 car garage, electric heat, new carpet/paint

PARCEL 9. 27± acres of land. Fully equipped mill with 15,000 bu. grain dryer, 2 metal grain storage tanks, Stormor 50,000 bu. & Brock 80,000 bu., 3 metal silos for storage, 5 concrete silos w/elevators; 3 holding tanks; dispatch tanks; equipment shed w/steel siding; 3 story block pullet house; mill & grain receiving area attached to ill; 5 production units, 30'x300', 2 converted to storage; 2 story pullet house, 44'x110'; 4 wells on property; 2 mobile homes.

ZONING: Parcels 1-7, Agricultural, Parcels 8 & 9 Highway Commercial.

SEVERAL TRACTS HAVE SUBDIVISION POSSIBILITIES.

PARCELS 3 & 5 BORDER STATE GAME LAND.

OPEN HOUSE: Saturday, October 12th & 19th from 1-3 p.m. or by appointment.

TERMS: 10% day of sale; settlement on or before February 2, 1997.

Broker Participation Welcome.



HORNING FARM AGENCY, INC.
Alvin Horning AU-0433-L
Elton Horning AU-0434-L
Rt. 23, Morgantown
(610) 286-5183

**TERMS BY:
Paul L. Hess, Sr.**

Public Auction Register

Closing Date Monday 5:00 P.M.
of each week's publication

COMPLETE FARM AUCTION

on
Sat., Oct. 26, 1996
beginning at 10:00 a.m.

Directions: 1 mile west of High Point, MO on Hwy. C to Church Rd., then North through church parking lot to farm. Farm is located approximately 25 miles West of Jefferson City, MO on Hwy. C or 13 miles East of Versailles, MO on Hwy. C.

Real Estate will be offered at approximately 1 p.m.

Older 2 story house on 200 acre farm, beautiful setting, mostly open, with approximately one-half in creek bottom, many walnut trees, artesian well, and 2 ponds. This farm has lots of improvements which include modern steel corral cattle handling facility w/loading shed, 400 head hog finishing floor, 8000 bu. grain storage, 300' ft. well and 50'x96' machine shed w/shop. Farm presently set up for cattle intensive grazing, 44 acres of Eastern Gama Grass in 5-7 acre paddocks with water in each. Soil test high. This outstanding farm has many possibilities such as produce - dairy - turkey - horse ranch.

Owner very serious about selling and will consider an opening bid of \$1,200 per acre w/10% down auction day. 3-5 year own financing possible to a qualified buyer. Contact owner prior to auction date.

Also selling Tractors, Combine, Machinery, Trailers, Wagons, Livestock Equipment, Tools & Misc.

**Larry and Kandy Hoback
Owners**

1-816-489-2328

For information or for your auction needs contact
Glen Fahrni Auction Service,
Rt. 1, Barnette, MO 65011
(573) 378-6257.

PUBLIC CONSIGNMENT AUCTION

Farm Equipment - Antiques -
H.H. Goods - Guns - Tools
Fri., Oct. 25, 1996
10:00 A.M.

Located: From Pine Grove, PA take PA Rte 443 East 4 miles to auction on right.

FARM EQUIPMENT: 1996 18'X102" International flat trailer, Cub Cadet 782 riding mower w/144" deck and snowblade (Sharp), Case 222 riding mower w/deck and snowblade (Nice), JD 420 utility w/3pt., JD MT w/single front wheel, JD 40 tricycle 3pt., Case IH 540 manure spreader, N.I. #7 cornpicker, Oliver 2x p.t.o. potato digger, 2x 3pt. cultivator, N.H. flat wagon, 2 steel side hay wagons, wagon gear, 3pt. rear blades, 3pt. stone rakes, 3pt. post hole diggers, drag disk, JD B cultivator, 3pt. carry platform, 7' 3pt. scabb, Army trailer, 2 wooden hay wagons w/live floors, 6' hyd. angle Ldr. snow blade, 3 Ford 6 cyl. power units, 30 farm toys, JD pedal tractor, Craftsman tool boxes, JD arc welder, 8' alm. truck top, 275 gal. fuel tank, electric fuel pump, sm. sandblaster, hand and garden tools, chains and many more items.

ANTIQUES/H.H GOODS: Drysink, 2 1-Drawer stands, rough oak furniture, Paul H. Lengel milk bottle, crocks, jugs, Schwinn bicycles, tap system, G.E refrigerator/freezer, asst. housewares, box lots and lots more.

GUNS: Winchester model 95 30-06 carbine saddle gun, Mauser model 93 308 bolt-action, Marlin model 55 12 ga. bolt-action.

RECEIVING: Wed. & Thurs. October 23 & 24 from 9 A.M. - 5 P.M. Loader available

TERMS: Cash or Good PA check, 2 auctioneers selling most of the day. Guns & furniture at Noon, Lg. farm equipment at 2 P.M. Lunch Available

**Robert W. Derfler
Auctioneer AU 2682-L
Pine Grove, PA (717) 345-8262**

SAT. OCT. 19 - 9AM Fine Antiques, Nice Antique Furniture & Clocks, Old Lodge Articles, Antique Tools. Sale to be Held at Al Starr Firemen's Building, Village of Willow Street, Lanc Co., PA. (South of Lancaster, Along Rt 272, Behind Firehall). Sale by: Mr. & Mrs. Paul R. Wesley, Howard E. Shaub, Inc Auctioneer

SAT. OCT 19 - 9AM Real estate, household, collectibles, tools. Box 87 Vine St., New Berlin, Pa Formerly Wrights Cabinet Shop Estate of Evaline W Wright Dennis Hassinger, Ken Smith, aucts.

SAT OCT 19 - 9AM antique furniture, spatterware, Gaudy Dutch, Penna German Folk Art, Primitives, etc. From collection of Ellwood L. Miller, At Horst Auction Center, 50 Durlach Road, Ephrata, Lanc. Co., Pa. Horst Aucts

SAT OCT 19 - 9AM Tools, Hardware. Charming Forge Area Estate of William Weidman. Dwight D Miller Aucts

SAT. OCT 19 - 9AM 84 acres, household furnishings, auto., 4-wheeler, antiques, collectibles & guns Between Klingerstown and Pitman next to Mahantongo Valley elementary school From I-81 exit 34 take Rt. 25 W to Hegins, turn right onto Rt 125, cross over Mahantongo Mt and go to 1st stop sign at Jack's Spot Cafe, turn left, continue 3 miles to sale site Estate of Ralph L Fetterolf Mike & George Deibert, aucts

SAT. OCT 19 - 9AM Farm Machinery, Cattle Truck, Personal Property, Antiques Location. 35 Brethren Church Rd, Leola From Leola Take Rt 23 East to Bareville, Turn Left on Brethren Church Rd to Farm Lane on Right Terms by Aldus M & Ellen B Nolt. Kline, Kreider, Good Auctioneers

SAT OCT 19 - 9AM Household Goods, Guns, Accessories, Coins & Stamps, Travel Trailer, Antiques & Collectibles, Farm Tractor Equipment & Tools Located at 246-A Enders Road, Fisherville, PA Approx 3 Mi North of Halifax on Rt 225 or 6 Mi South of Elizabethtown on Rt 225 to Fisherville Then South 1 Mi on Enders Road to Sale Watch for Signs the Day of Sale Owner Mrs Shirley Oxenrider David Deible; & Ed Shoop Auctioneers

SAT OCT 19 - 9AM Real estate, personal property, car, antiques 1744 W Main St, Ephrata, Pa By Lizzie W. Martin Aaron E Martin, auct

SAT OCT 19 - 9AM, Motors, Butchering Equip, Mowers, etc & Tools at 7664 Rauch St, Harrisburg, Pa (W Hanover Twp) From Hbg take I81 N to Manada Hill Exit 27, turn l after Goodyear Tire, turn l on Fairville Ave, then r on Rauch St Signs posted. Conductor by Richard & Rick McNeal, aucts

SAT OCT 19 - 9 30AM Real estate, antiques, collectibles, quilts, furniture, Lehnware, fine china & glassware, Fraktur, Samplers, 12 pl setting sterling silver, hand hooked rugs 28 Heller Church Rd, Leola, Upper Leacock Twp, Pa For Georgiana Bair Miller & Segrist aucts

SAT OCT 19 - 9 30AM Morning Glory Farm Located between Frederick and Libertytown Antique furniture, household furniture, household items numerous tools, power tools, Howard B Parzow Auct

SAT OCT 19 - 9 30AM Int tractor, machinery, JD riding mower, great shop or power & hand tools, farm toys For Mr & Mrs Donald Conklin, box 148 Rt 618, Hopewell, NJ Arthur Hanna, auct