

Sale Reports

FISHEL SALE west of Bainbridge on Route 441 in Lanc. Co., Pa. The 1/2 acre farm-

A Public Sale of real estate was held October 12 by Susan Fishel,

te with a house and a barn together with a 1 acre building lot was sold to John Williams of Elizabethtown, Pa. for \$66,000. Keller Auctioneers conducted the sale.

PATTERSON SALE held October 12 by Geraldine and Francis Patterson R.D. 1, Box Lancaster Farming, Saturday, October 19, 1996-B29

A Public Auction of household goods was

111-A, Paradise Twp., Thomasville, Pa.

Some prices were: Simplicity 860 ground-driven snow blower \$1000, Oliver toy baler \$90, Old Forge milk bottle \$22, cabbage slawer \$55, big 1920 public auction sign \$80, oak double round mirrored dresser \$450, 2 McCormick spice cans \$15 and President Taft tin \$22.

Mike Stermer was the auctioneer.

LEHMAN SALE

A Public Sale of real estate and personal property was held October 12 by Alda Mae Lehman, 7646 Edenville-Cheesetown Rd., Chambersburg, pa.

The 50 acres with a 2 1/2 story frame house with aluminum siding, large barn and 3 car garage was sold for \$232,000 to a neighbor.

Other prices were: Oliver 70 tractor \$900, Oliver 60 tractor \$550, 2 Lehman Dairy bottles \$140 & \$130, Brandt's Church harvest table \$375, Craftsman 11 h.p. riding lawn mower \$400, Craftsman 13 h.p. riding lawn mower \$550, metal sign with Holstein cattle \$110, compressors \$180 & \$80, cedar wardrobes \$110 & \$160, and walnut book shelves \$140.

Dennis D. Welker and John F. Kohler, Jr. were the auctioneers.

KREX

ESTATE SALE
A Public Sale of real estate was held October 9 for the estate of Robert Krex, 225 W. Chestnut St., Selinsgrove, Pa.

The 3 bedroom house on a corner lot brought \$54,500.

Hassinger and Courtney conducted the sale.

WRIGHT SALE

A Public Auction was held October 12 by Martha H. Wright, 117 17th Street, Berwick, Pa.

Some items sold were: 2 porch rockers \$125 each, several lots of jewelry \$600, 14K gold bracelet \$440, Bellek cup & saucer \$40, 30 pieces Candlewick dishes \$370, 8 blue swirl glasses \$145, Victorian round-about style chair \$300, 2 Victorian style chairs \$380, set of cobalt blue overlaid w/ silver salt & pepper shakers \$40, Cranberry to clear salt & pepper shakers and jar (no lid) \$190, pair "goat milkers" figurines \$85, small 4-drawer chest of drawers \$225, ladies drop-front desk \$675, service for 23 "International" sterling \$750 and marble-top tables \$350 each.

Nevius Auction Service managed the sale.

NURSERY AUCTION SAT., OCT. 26, 1996 9 AM

LOCATION: 437 Jones Rd., Fawn Grove, York Co., PA; from Lanc. Co. Norman Wood Bridge RT 74 N to Airville, L RT 425 S 7-1/2 mi., R Deer Rd - straight onto Jones Rd - from Fawn Grove RT 425 N 3-1/2 mi, L on Deer Rd, 500 ft straight on Jones Rd 1st place on L.

INVENTORY REDUCTION

Wide variety of hardy plants--shrubby, trees, perennials; from Azaleas to Zelkous; Quality, hardy container & field grown arborvitae cypress, boxwood, spruce, juniper, dogwood, birch, sedum, ground covers, etc; some houseplants--cactus, etc.

OWNER:
David A. Jones

AUCTIONEERS:
Kenneth Keeny AU2797L
717-993-3448
Marlette Thomas AU3251L



COMPLETE SERVICE

AUCTIONEERING PUBLIC AUCTION SAT., OCT. 26, 1996 9:00 A.M.

Selling Real Estate, Antiques & Personal Property For The Estate Of The Late Cora Kocher. 9 So. Water Street, Selinsgrove, PA.

DIRECTIONS: From Harrisburg travel north on Rts. 11 & 15. Take Rt. 35 exit at South end of Selinsgrove. Come to stop sign, turn right and proceed north on Market St. Turn right on Pine Street just across from Snyder County Trust and continue one block, turn right. Home will be on the left next to Fire Hall.

AUTO

1951 4 Door Deluxe Chevrolet - Black, A-Title, 56,000 Original Miles.

ANTIQUES & COLLECTIBLES

Super Bedroom Suite With Carved Headboard, Exceptional Dresser With Tall Mirror And Hat Closet Also Washstand, Dropleaf Table With Eight Boards, 1940's Bedroom Suite, Quilt Frame, Round Parlor Table; Several Rockers, Some Oak, Ornate Oak Parlor Stand, Lots Of Misc. Stands; Plank High Chair; 6 Spindle Back Repainted Plank Chairs, Several Baskets, Dough Box, Grained Flour Chest, Oak Towel Rack Chip Cut; Wooden Add Boxes Arbuckles Coffee, Fairy Soap And Others; Oak Frames, Early Framed Mirror, Clock Shelf, Porch Chairs, 2 Wash Boilers, One Copper, 3 Wooden Tables, Oriental Style Rugs; Wood Bench, Drying Rack; Cedar Chest, Plank Rocker, Funeral Baskets, Chest With Tear Drop Handles; Eastlake Fall Front Secretary, Butter Bowl, 2 Cast Wash Boards, One Drawer Nite Stand, Log Cabin Comforts, Gray Granite Cream Can, Berry Pail, Tiny Tin Cream Can And Berry Pail Also Other tin Items; Lady Print - Absence Cannot Hearts Divide, Sad Irons, Pleater, Mini Iron and Trivet, 18" Feather Tree, Beaded Pin Cushions And Others, Lamp Shades, Cast Fry Pans, Chickens On Nest, Rug Beater, Hat Boxes And Early Hats, Lots Of Vintage Clothes, Flue Cover, Coverlet, What-Not-Shelves, Early Girl Scout Cookie Box, Ice Skates, Granite Snack Set #50, Puzzles, Two Teddy Bears, Chalkbaby; Zig Zag Tin Cups - German, Lots Of Post Cards; Kero Lamps, Some Finger Style, Celluloid Clock, Wood Apple With Tea Set Inside, Doolies, Little Daisy Bissell Sweeper, States, Soap Doll - Lancaster, Fair Frances Cut Dolls #8, Black Man And Woman On Bench, Toy Tin Cookstove With Pots, Doctor Bag, Old Christmas Decorations, Flat Top Trunk; Cane Back Rocker, Porch Swing; Tea Pots, Indian Princess TV Lite, Photo Albums, Noise Maker, Ice Cream Dipper Gilchrist #31 Size 10, Crockery Bowls, Misc. Crocks, Snare Drum, Rye Coil Basket; Tobacco Cards - Hassan, Polar Bear And Piedmont; Cracker Jack Tin Tray & Others; Pencil Boxes Including Simple Simon, Sterling Hand Held Mirror; Thimbles And Sewing Things, Dog Made Ground Dollars, Coal Bucket; Victor Dogs - Keller Music Room Selg, Tin Sprinkle Can, German Head Doll #390 And Others, Climbing Monkey In Original Box, Lotto Game; Wood Blocks, Early Bingo, Snap By Parker, Cube Game, When My Ship Comes In, The Bicycle Boy Book 1896, Mother Goose 1891, Plates, Selinsgrove Boro 1953, Snyder County 1955, Berrysburg 1968, East Malt Milk Bottle, tin Maple Caps, Local Add Pieces, Tin Bear, 1936 Flood Items, 1933 Roosevelt Inauguration Book, Tins, Childs Hatchet; R S Germany Veg Bowl, English Dinner Set, Nippon - Sultana - 12 Place Dinner Set With Extra Pieces; 20 Plus Goblets, Salt Dips, Perfume Bottle, Cruets; Salts And Peppers, Glass Refrigerator Dishes, Souvenir Of Selg Cup, Misc Depression, Nippon Vase, Carnival Dishes, Jeep Candy Container; Jewelry, Occupied Jap Pieces, Mayolica Plate, Blue Nesting Rooster; Flatware, 1971 Uncirculated Silver dollars, 1926 Selg. H.S. Yearbook; 1924 S.H.S Pennant And Cap. And Lots Of Other Goodies

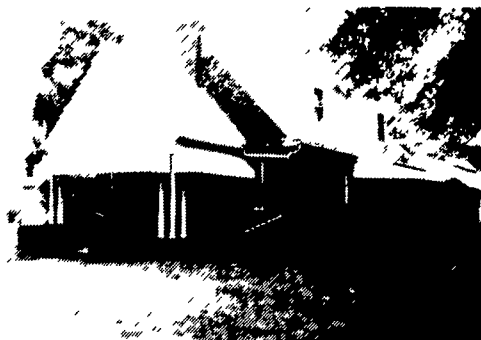
Executrix: Dottie J. Hane

KENNETH E. HASSINGER
McClure, PA 17841
(717) 658-3536
AU-001532-L

NEIL A. COURTNEY
Richfield, PA 17086
(717) 539-8791
AU-002651-L

REAL ESTATE - PERSONAL PROPERTY PUBLIC AUCTION SAT., NOV. 16, 1996 Auction Time 9:00 A.M. Real Estate 1:00 P.M.

LOCATION: 936 East Main St., Ephrata, Lancaster County, PA.



1 1/2 STORY BRICK HOUSE

Downstairs: Kitchen with wooden cabinets, large living room & family room with built-in corner cupboard & open stairway, 1 bedroom and 1/2 bath.
UPSTAIRS has 2 large bedrooms with closets, full bathroom, storage room, hardwood floors, full basement, laundry hookup, large 2-car attached garage on 1/2 acre+ lot.

- Oil hot water heat
- Plastered walls
- Macadam driveway
- 12'x16' storage barn
- Well water & cistern
- Septic system
- Low Maintenance
- Mature shade

OPEN HOUSE: Saturday, Oct. 26th 1:00 P.M. to 3:00 P.M.
Saturday, Nov. 2nd 1:00 P.M. to 3:00 P.M.

or by appointment. For appointment to see house or help to obtain financing contact Aaron E. Martin, Auct. at 733-3511.

TERMS: 10% down day of auction, balance at final settlement on or before December 20, 1996.

NOTE: A well built home with easy access to main roads. Ephrata Township. Don't miss this property!

Attorney: Michael P. Kane, 299-5251

Auction By

MARTHA M. MARTIN
(717) 733-7434



2 AUCTION SALES BY ORDER OF SECURED PARTY WOODWORKING MACHINERY VEHICLES, ANTIQUE LUMBER THURSDAY, OCTOBER 24 - 11 A.M. RECYCLE THE BARN, INC. RTE. 23, ELVERSON, PA.

(RTE. 345 & 23 - 1/2 BLOCK EAST ON 23 ON LEFT)
Timesavers Sander, SCMI Shaper T-130 w/Steiff 38 Feed, EME Joiner M/ND/410 - 1989 S/N 89-12-32, Delta RC-63D Planer M/N 22610, Delta Planer RCS1, Wermatic Tenoner M/N 2A Mortise Machine, Northwood Drift No 12, Powermatic Drill Press M/N 1150, Dewalt Radial Arm Saw M/N GE, Rockwell Vertical Band Saw M/N 127-129, Jet Belt Sander/Disc Grinder M/N JSG-6, Powermatic Cut-off Saw M/N 66, Orbital Sander, Dust Collector System, Scaffolding, Power & Hand Tools, Office Furniture, 1990 Jeep Cherokee, 1977 GMC Utility Truck w/Pitman Pole Cat Crane, 1985 Ford F150 Truck 4WD, 1984 Ford 14' Stake Body Truck, International 4500 Series A Diesel Forklift 5,000lb Capacity

Inspection Day of Sale From 8:30 A.M.
Terms: Cash or Cashier's Check - 25% Dep Required (Minimum \$100.00)
COMPLETE PAYMENT SALE DAY
10% BUYER'S PREMIUM

SALE BY ORDER OF SECURED PARTY 5-CNC MACHINING & TURNING CENTERS 2 - W & S AUTO CHUCKER LATHE MILLS, SAWS, PRESSES, EQUIPMENT WEDNESDAY, OCTOBER 30 - 10 A.M. ON PREMISES HARPER PACKING COMPANY 503 HERON DRIVE, BRIDGEPORT, N.J. (PURELAND INDUSTRIAL PARK)

CNC MACHINE CENTERS, TURNING CENTERS, LATHES
1982 Matsuura Twin Master 2 Vertical CNC Machining Center w/60 Station Tool Changer M/N MC1000V-DC, S/N 2285, w/Fanuc 6M Controls, 1980 Matsuura Twin Master 1 Vertical CNC Machining Center w/50 Station Tool Changer M/N MC-710V-DMC, S/N 8001887 w/Fanuc 5M Controls, 1980 Warner and Swasey CNC Automatic Bar & Chuckler Turning Center M/N 5060, Lot 846, #25C S/N 3150896 w/Hydraulic Bar Feed & Chip Conveyor, 1981 Tsugami Mercury CNC Automatic Bar & Chuckler Turning Center S/N 7041525 w/Fanuc Lot Controls, 1980 Ikagai CNC Bar & Chuckler Turning Center M/N FX25N, S/N 21747T w/Fanuc FX Controls, 1967 Warner & Swasey Automatic Chuckler Lathe M/N 3930, Lot 24 #3AC S/N R2211741, 1965 Warner & Swasey Automatic Chuckler Lathe M/N 3900, Lot 7 #1AC, S/N R2003200

SAWS, MILLING MACHINES, PRESSES, FORKLIFTS, OFFICE FURN.

1980 Do-All Horizontal Band Saw M/N C1216A, 3 Cincinnati Lathes 54 Bad M/N 17, 48", 72" Bed M/N 22, Cincinnati Tool Cutter w/Weldon Model 200 Sharpener Speed Fam Lapper/Grinder w/64" Table S/N SNF-64BAW-970, Norton Hyprolap Grinder S/N LV2127, Brown & Sharp Horizontal Boring Mill M/N 2A, Zero Glass Bead Machine M/N Blast in Peen 10-600, Millrite Milling Machine M/N M-102, Babin Auto Drill Press 3HP, Bridgeport Milling Machine, Asst Radial Arm Saws & Drill Presses, Nugeri Punch Press 100 Ton Cap M/N H 100 Ap 80 Ton Cap M/N H80-4 1/R Air Compressor T30 M/N 25T2-30TMA, Lime Air Compressor 5 HP, Grinders, Engine Lathes, Chain Hoists, Punch Press, Clark Elec Forklift 4,000 Lb Cap, Yale Elec Forklift 3,000 Lb Capacity w/Battery Chargers, Desks, Chairs, File Cabinets, Fireproof Cabinets, Bookcases, Conference Table, Copier, Typewriter, Fax, Etc

INSPECTION TUESDAY, OCTOBER 29 - 10 A.M - 2 P.M.
TERMS. CASH OR CERTIFIED CHECK - 25% DEPOSIT REQUIRED (MINIMUM \$100.00)
COMPLETE PAYMENT SALE DAY
10% BUYER'S PREMIUM

Established in 1834
COMLY Auctioneers
W M F COMLY & SON, INC.
1825 East Boston Avenue
Philadelphia, PA 19125
(215) 634-2500 FAX (215) 634-0496
PA Auctioneers
License No. RY000087-L

PUBLIC AUCTION OF VALUABLE REAL ESTATE Saturday, October 26, 1996 Sale at 2:00 P.M.

Located 1 mile west of Bird-in-Hand in the town of Witmer take 340 west to Bird-in-Hand to the light, turn right (Mount Sidney Rd.) to sale on right (next to Witmer Post Office).



2 1/2 story frame dwelling with siding and deck and front porch with PVC railing. Downstairs has kitchen, large dining room, living room with hardwood floor and 1/2 bath. Upstairs has 4 bedrooms with closets, full bath and open stairway. Basement has concrete floor, also an attic for storage. Town sewer Well with 1 yr. old pump and black-top driveway.

20x20 Cement Block Barn or garage with 16x16 Added On Workshop 12x20 Utility Shed with 2 - 7x7 Roll Up Doors

Open House: Saturdays, September 21 and October 5 from 1 to 4 P.M. or by appointment (call auctioneer)

Terms: 10% day of sale. Settlement on or before March 1st, 1997

Owner relocating to another county.

Auctioneer's Note: House is in good condition with a nice garden.

Bryan Byler, Attorney

Sale For

Mervin & Sylvia King

All Announcements Sale Day Take Precedence Over All Advertising
Not Responsible for Accidents

Auctioneer: Mel Hoover AU-003111-L

(717) 354-8397 Home (717) 354-6431 Barn

