

Maryland and Virginia Milk Producers Cooperative Hold District Meeting

LOU ANN GOOD

Lancaster Farming Staff
WAKEFIELD (Lancaster Co.)
 — "The most important people are you — the producers," said Russell Wachter, president of the Maryland and Virginia Milk Producers Cooperative Inc.

Wachter said that just as his name means watchman, it has been his ambition to look out for the producers' interests in the cooperative. During the district meeting held in Wakefield on Tuesday, Wachter elaborated on the efforts to always keep members' interests in the forefront.

With milk prices up, Wachter said the cooperative decided to pass along the 74 cents in over-order premiums now instead of waiting to include the bonus in the 13th check distributed in February. Although over-order premium checks were distributed early, members can expect the 13th check in February to be substantial from special allocations.

In his presentation, "The Year At a Glance," George Walgrove, secretary and general manager, reviewed the events that affected

the cooperative during the past year.

Despite last year's dour forecast by economists, milk prices have set new records with \$15.37 in September and are expected to exceed \$18 in November.

Walgrove explained how the events on the West Coast resulted in a domino effect to raise the basic formula price determined by cheese in Wisconsin. The events included a succession of heat waves in some major areas in the country, which resulted in higher grain prices and less quality. Several producers sold out, which resulted in less milk production in states such as Minnesota, Wisconsin, Iowa, and Montana. Also, the cooperative sent more milk into the Southeast than ever before in its history.

Although the market has softened in the last two weeks and cheese prices are expected to drop, Walgrove said that he expects higher milk prices will be main-

(Turn to Page A22)

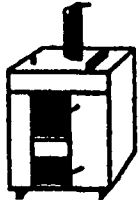


Working to make the Maryland and Virginia Milk Producers Cooperative, Inc. a success, from left, are George Walgrove, secretary and general manager; R. Steven Graybeal, director; Russell Wachter, president; W. Thomas Moore, field representative, and Alan Grove, field representative.

Mahoning Outdoor Furnaces

Cut Your Heating Costs With Our Outdoor Furnace

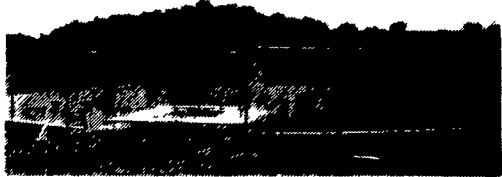
- Standard Model Burns Wood, Coal or Wood by-products
- Multi-Fuel Model Burns Wood, Coal, Oil or Gas
- Corning Catalytic Combustor Option Available on all Models



Adapts to any existing heat system Installation & Accessories Available

(717) 624-3639 (717) 624-4188

TOWN AND COUNTRY POURED WALLS



SCS Approved

- Manure Pits
- Retaining Walls
- House Basements
- Trench Silo Walls



(610) 593-5794

JAMES & CLARK Attorneys At Law

Mark L. James James R. Clark

Estate Planning for Farm Families

- Wills, trusts and tax planning
- Charitable giving

Business Planning for Farm Families

- Farm partnerships and corporations
- Succession Planning/Farm Transfers

Real Estate

- Tax-free exchanges of real estate
- Real estate settlements
- Public sales

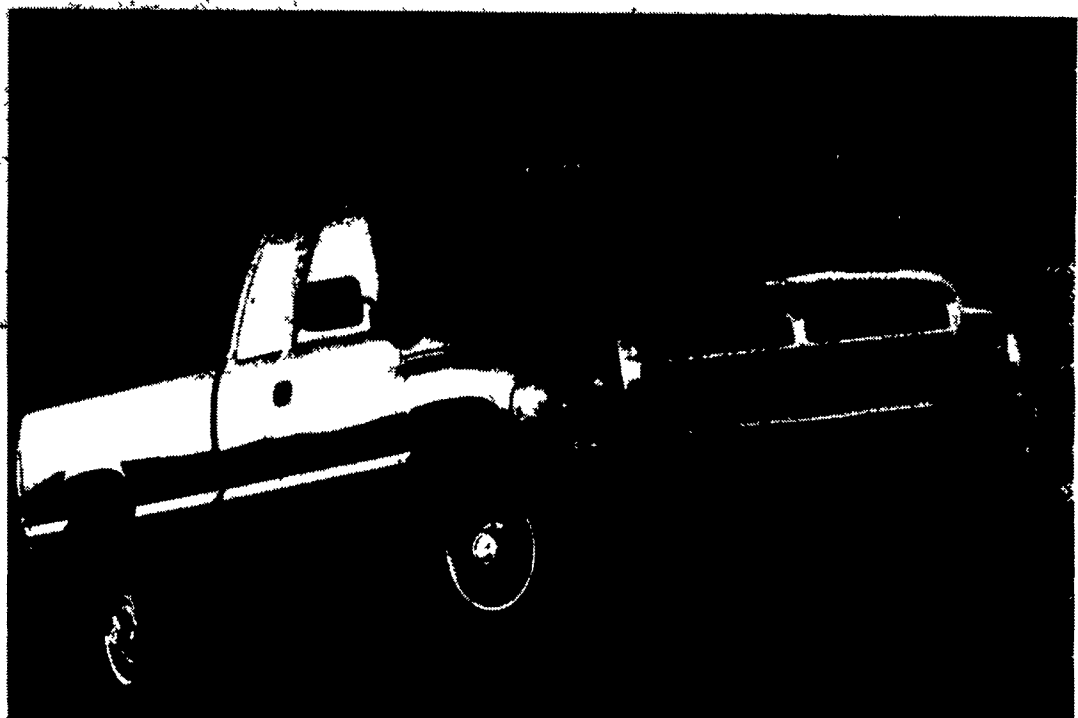
Estate Settlements

- Prompt settlement (most completed in 3 months)
- Tax planning during settlement

54 Queen Road, P.O. Box 497
 Intercourse, PA 17534
 (717) 768-7100

Offices also in:

New Holland Willow Street
 (717) 354-6083 (717) 464-4483



When you need a loan for a truck, we'll be there... generation after generation.

Before you get a standard truck loan, talk to Farm Credit. As a cooperative owned by the people who use us, Farm Credit has served the needs of rural Americans for generations. In fact, for over 75 years we have been a dependable source of credit to agriculture.

We make loans at competitive interest rates for all kinds of purposes, like an equipment loan for that pickup or tractor. Our loan officers are knowledgeable and can help tailor a financial package to fit your situation.

So, whether you are a commercial operator, a part-time farmer or simply like living in the country, we want to do business with you.

And we'll be there for future generations.



Farm Credit
 A Customer Owned Business

Southeastern PA
 Keystone Farm Credit
 (800) 477-9947

Western PA
 PennWest Farm Credit
 (800) 998-5557

Northern PA
 Northeastern Farm Credit
 (800) 326-9507

South Central PA
 York Farm Credit
 (800) 503-8957

