

# DILLER EQUIPMENT

800-640-4448

Chambersburg, PA  
Specializing in Truck Tankers

## Complete Tankers



Customized Tanks To Fit Your Truck and Your Needs

- 1500 - 7000 Gallons
- Rugged Steel Fenders
- Optional Fan Locations
- Matching Colors
- 1/4" Steel Tanks
- Large Lid Type Hopper
- Epoxy Coatings Inside & Out

## Best Buys in Used Equipment

Chambersburg is location (c) Carlisle is location (k)

### Tractors

- AC 6060 w/Loader (K)
- AC 6080 2WD ROPS (C)
- Agco 8630 MFD Cab (K)
- CA 1030 2WD (K)
- CIH 5250 MFD ROPS (C)
- CIH 685 2WD Cab (C)
- CIH 7120 2WD Cab (C)
- CIH 7130 2WD Cab (K)
- CIH 885 MFD w/Loader (C)
- CIH 895 MFD w/Loader (C)
- CIH 995 2WD ROPS (C)
- IH 1066 2WD ROPS (C)
- IH 1086 2WD Cab (C)
- IH 756 2WD (C)
- IH 784 2WD (C)
- IH 966 2WD Cab (C)
- IH H NF (C)
- IH Super W6 (C)
- IH W4 (C)
- IH W6 (C)
- IH 460 NF (C)
- JD 4430 2WD ROPS (C)
- MF 2675 2WD Cab (C)
- MF 275 2WD (C)
- MF 65 2WD Gas (C)

### Balers

- IH 430 w/Thrower (C)
- IH 445 w/Thrower (C)
- NH 273 w/Thrower (C)
- NH 311 w/Thrower (C)
- NH 320 w/Thrower (C)
- NH 851 Round Baler (C)
- NI 484 Round Baler (C)
- Vicon RP1210 Round Baler (K)

### Forage Blowers

- GE 1540 540 PTO (C)
- GE 1580 1000 PTO (C)
- GE 99 540 PTO (C)
- GE 99 540 PTO (C)
- IH 56 540 PTO (C)
- IH 56 540 PTO (C)
- NH 28 540 PTO (C)
- NH 30 540 PTO (C)

### Combines

- CIH 1660 2200 Hrs. (K)
- CIH 1660 1500 Hrs. (C)
- CIH 1660 4300 Hrs. (K)
- CIH 1660 3300 Hrs. (C)
- CIH 1680 5000 Hrs. (K)
- IH 1480 1900 Hrs. (C)
- IH 1480 3200 Hrs. (C)
- IH 205 Gas (K)

### Hay Tedders/Rakes

- Peq 760 Inverter (C)
- Peq 786 Inverter (C)
- MF 28 4 Wheel (C)
- Oliver 5 Wheel (C)
- Stohl Rake Tedder (C)
- Tonutti 4 Wheel (C)
- Tonutti 5 Wheel (C)
- Vicon 1240 8 Wheel (C)

### Planters

- AC 330 2R (K)
- IH 400 6RN (C)
- IH 56 2R (C)
- JD 7000 6RN (C)
- IH 800 4RN (C)
- IH 800 6RN (C)
- IH 56 4RW (C)

### Spreaders

- CIH 560 (C)
- GE 315 (C)
- Hawkbilt 207 (C)
- IH 595 (C)
- JD 450 (C)
- Knight 1514 (C)
- Knight 7725 (C)
- NI 3618 (C)
- Martin 1678 (C)
- Martin 2400 V (C)
- NH 791 (C)
- NI 214 (C)
- NI 224 (C)
- NI 244 (C)
- NI 245 (C)
- NI 245 (C)

### Tillage

- Brillion Cultimulcher (C)
- Brillion 10' Cultipacker (C)
- Brillion 11' Cultipacker (C)
- Brillion 13' Cultipacker (C)
- Brady 13' Field Cult. (C)
- Brady 2500 Field Cult. (C)
- Case 10' Field Cult. (C)
- Oliver 9' Field Cult. (C)
- Oliver 285 12' Field Cult. (C)
- Athens 131 Disk Har (K)
- Athens 167 Disk Har (C)
- Ford Disk Har (C)
- IH 370 Disk Har (C)
- IH 475 Disk Har (C)
- Long 1087 Disk Har (C)
- IH 450 3 Bot Plow (C)
- IH 700 5 Bot Plow (K)
- IH 710 5 Bot. Plow (C)
- IH 710 3 Bot. Plow (C)
- Oliver 3 Bot. Rollover Plow (C)
- Oliver 5 Bot. Plow (C)
- Ford 131 13' Chisel Plow (C)
- IH 55 11' Chisel Plow (C)
- IH 55 11' Chisel Plow (C)
- JD 1600 10' Chisel Plow (C)

### Flail Choppers

- Brady 144 (C)
- Brady 722 (C)
- Brady 772 (C)
- GE 72B (C)
- IH 8 (C)
- JD 16A (C)

### Forage Harvesters

- IH 830 w/Heads (K)
- NH Super 717 w/Heads (C)
- NH 770 w/Heads (C)

### Drills

- Bush Hog 9690 18x7 (K)
- CIH 5100 16x7 (C)
- CIH 5100 20x6 (K)
- IH 10 16x7 (C)
- IH 510 13x7 (C)
- IH 510 16x7 (C)
- IH 510 21x7 (C)
- IH 5100 18x7 (C)
- JD FB-B 15x7 (C)
- Tye Pasture Renovator (K)

### Uni Equip.

- NI 710 Combine (C)
- NI 818 Combine (C)
- NI 818 Combine (C)
- NI 760 F Harv (Parts) (C)
- NI 7135 Grain Head (C)
- NI 740 Grain Head (C)
- NI 768 Corn Head (C)
- NI 768 Corn Head (C)
- NI 813 Grain Head (C)
- NI 838 Husker (C)

Large Selection of Bale and Forage Wagons Available. Please Call

### Windrowers

- CIH 8830 S.P. 14' Head (C)
- NH 495 12' (C)
- GE 2330 Disc M/C (C)
- HE 8200 S.P. 12' Head (C)
- IH 1190 (C)
- IH 1490 (C)
- IH 990 (C)
- JD 1219 (C)
- JD 1219 (K)
- NH 1495 S.P. 12' Head (C)
- NH 1499 S.P. 12' Head (C)
- NH 469 (C)
- NH 479 (C)
- NH 488 (K)
- NH 489 (C)
- NH 499 12' (C)
- JD 1600 (C)

## 2 FARM EQUIPMENT WANTED

13' Flexhead for Gleaner F or F2. 610-754-7875.

Hydraulic snow blower for G5200 Kubota tractor in good condition. (540)942-1282.

JD 655 or 755, 2WD or 4WD, good shape, prefer w/mower and plow or loader. 610-759-9604.

JD 780 or 785 manure spreader. 717-483-6291.

M & W Dynameter. (717)532-6655.

NH TR70 Hydro Combine for parts; M Gleaner Hydro parts. 717/445-6156.

Need help and/or parts for restoring a Samson windmill. Call collect 717/334-4908 Gettysburg, mention Windmill!

NH 456 sickle bar mower or JD 350 pull type. Must be excellent condition. 717/938-3517.

Used 3pth for Farmall H, 4' or 5' Bush Hog. (609)694-1189.

WANTED: JD 4020 diesel or 3020 (908)946-1207 after 8pm.

WANTED: JD 2010, 2020, 2510, 2520, 3010, 3020, 4010, 4020. 609/567-0453.

WANTED: Old style 2 stage blower for JD 318. 717-949-3718.

## WANTED:

# USED FORD & KUBOTA TRACTORS

Call 717-949-2000 Daytime

## 1a CONSTRUCTION EQUIPMENT

Mobil Air Compressors, trailer mounted, diesel power. Davey 125 CFM, 600 hrs., \$5000. Gardner Denver 175 CFM, 1800 hrs., \$6000 Davey 250 CFM, 2200+ hours, \$3000 410-335-4700.

New 1995 Towmaster 10-ton equipment trailer, air brakes, Hutch Suspension, 24' deck, \$7600 609-468-6847.

New Woods RB850 heavy duty scraper blade, angle off-set and tilt features. 412-238-7177.

Sandblast truck, all equipment needed to go to work, w/Gardner Denver 365 rotary air compressor, Detroit diesel, rebuilt engine, mounted on Ford chassis, working daily, \$15,000 complete. 609-894-2849 Sundays O.K.

Scissor Lifts: Heff-T-Herman, \$3500 Grove, \$3950. 717/354-3105.

Twenty ton Eager Beaver tag-a-long, air brakes, \$4500 OBO 717/733-0933.

Unified house jack system comes w/power pack, 8 jacks mounted on trailer, \$8,000 OBO (609)894-2849

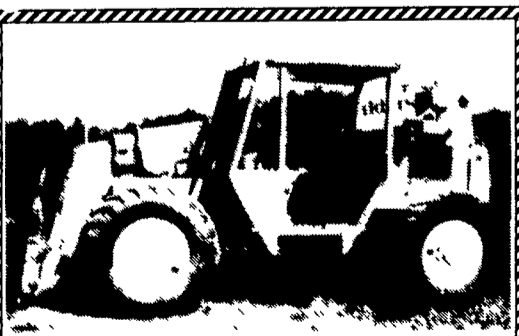
Vibratory Roller, Rexnord model SP-910, new in 1981, 10 ton, 3.53 Detroit diesel, 60" drum diameter, very low hours, excellent condition, \$15,000/offer. 410-337-3570.

WANT TO BUY all makes and models of construction equipment (301)371-5500.

Working Michigan 110 Scraper, self-loading, most components, w/approx 200 hrs since rebuilt, good rubber, 471 Detroit 717/933-9036.



1994 JD 544G TC 2 1/2 yd. Forks with Clamp  
New 20.5 R25 XHA Michelin, less than 2500 hrs., 2nd hyd. valve, \$72,900  
717/872-6137



Sanderson Teleporter  
6,000 lb. Lift Cap 34' Reach, Every 250 Hr. Maintenance Schedule, Well Kept Machine In Very Good Condition.  
SN# T2T64067J6911 Yr. 1987  
Asking, \$23,500 Call 717-445-7897

- RENT FOR LESS -  
**STONE CREEK RENTALS**  
Kutztown, Pa. 19530  
NOW RENTING: CRAWLER LOADER  
CRAWLER DOZER  
FULL-SIZE BACKHOE  
HYDRAULIC EXCAVATOR  
- DAILY, WEEKLY, OR MONTHLY RENTALS -  
610-683-9583

1978 FORD A-62 LOADER  
\$11,000  
717-687-7631

781 New Holland Skid Loader  
w/ 12' digging depth backhoe. Both units are in excellent condition, maint. schedule every 250 hr. Deutz 50 hp Diesel w/3400 hrs. on loader  
\$18,500 OBO Call 717-445-7897

**PARTS PRICED RIGHT**  
**DISMANTLING MOST MAKES & MODELS**  
**OF CONSTRUCTION EQUIPMENT**

Cat	IHC	Gallon
Case	Michigan	Wabco
John Deere	Hough	Dynahoe
Trojan	Terex	Koehring
Drott	Hein Werner	AC/Fiat Allis & Others

Over 650 Machines Dismantled

**NATIONWIDE PARTS LOCATING SERVICE**  
In addition to our own large inventory, we have two computerized parts locator services, nationwide & Canada, ready to serve you in less than a minute. Over 600 used & new parts & equipment suppliers will receive your parts request. Parts are located easily & at substantial savings. Try Our Services  
Save \$\$\$ Parts Shipped Anywhere Direct To You. All Parts Guaranteed  
"We Return All Phone Calls"

**BALANDA EQUIPMENT CO., INC.**  
P.O. Box 407 • Route 29 • Palm, PA 18070  
Phone: (215) 679-3900  
Fax: (215) 679-8727  
**TOLL FREE: 1-800-322-8030**

Case 602, 1102 Rollers Demonstrators  
Call For Special Pricing

Case 1155D Crawler Loader.....POR  
(3) 580 Super E, ROPS, std. hoe, 4 WD.....POR  
Case 1835C Unloader.....\$8,950  
1986 Case 580 Super E, cab, ext-a-hoe, 2WD..P.O.R.  
1991 Case 580 Super K, ROPS, ext.-a-hoe, 2WD, low hours.....\$28,900  
1994 Case 580 Super K, ROPS, ext.-a-hoe, 2WD, low hours.....\$36,500  
(1)(2) Case 1835B Unloader.....P.O.R.  
Case 360 Trencher w/Backhoe  
Case 252 Roller.....\$10,900

**Used Trailers**  
1986 Eager Beaver 12-ton tilt deck.....P.O.R.  
1995 Hudson 10-ton air brake.....P.O.R.

**Rental Returns**  
602B, 1102 Rollers In Stock  
Stanley 695 Hammer  
Call For Pricing on Rental Return  
90 Series Case Excavators  
New & Used Trailers In Stock Call For Information

**Vernon E. Stup Co.**  
5859 Urbana Pike Frederick, Md. 21701  
301-663-3185

**CHAMBERSBURG FARM SERVICE**  
South Main Street  
Chambersburg, PA  
717-264-3533

**CARLISLE FARM SERVICE**  
York Road  
Carlisle, PA  
717-243-4419