

Indiana Farmers

**HOMER CITY, PA
OCTOBER 17, 1996**

CATTLE: 195: Steers & Heifers Steady to 1.50 lower; Cows Steady.
STEBERS: Choice 1150/1275 lbs, 63.25-68.75; Select 52.00-62.25; Standard 38.00-51.00; Holsteins Select 50.00-52.75; Standard 25.00-35.75.
HEIFERS: Few Choice 1000/1200 lbs, 64.00-68.00; Select 55.00-59.50; Standard 35.00-48.00.
COWS: Breaking Utility and Commercial 32.50-39.50; Cutter and Boning Utility 29.00-32.00; Canner & Low Cutter 22.50-28.25.
BULLS: Few Yield Grade 1 1300/1850 lbs, 35.75-38.00; Few Yield Grade 2 1250/1650 lbs, 30.50-35.25.

FEEDER CATTLE: Few STEERS M&L 2 350/650 lbs, 23.00-31.00; HEIFERS: M&L 1 325/575 lbs, 28.00-38.00, M&L 2 300/800 lbs, 20.00-30.00; Few BULLS: M&L 2 325/750 lbs, 20.00-31.50.
CALVES: 60: Standard & Good 70/120 lbs, 15.00-22.50; FARM CALVES: Steady to 15.00 lower; No 1 Holstein Bulls 95/120 lbs, 55.00-70.00; No 2 Holstein Bulls 85/110 lbs, 25.00-45.00; No 1 Holstein Heifers 90 lbs, one at 110.00; Few No 2 Holstein Heifers 80/85 lbs, 22.50-30.00; Few Beef Cross Bulls & Heifers 90/125 lbs, 25.00-35.00.

HOGS: 42: Barrows and Gilts: Steady; 1-3 230/260 lbs, 56.75-57.50; 2-3 250/270 lbs, 52.00-54.00; 1-3 205 lbs, one lot at 48.50.
SOWS: Few 1-3 500/670 lbs, 43.75-47.75; Few med 250/300 lbs, 32.00-39.50; BOARS: 200/600 lbs, 33.00-36.00.

FEEDER PIGS: 25: US 1-3 20/40 lbs, 11.00-21.00/hd.
SHEEP: 21: Choice 65/110 lbs, 79.00-82.00; Slaughter Sheep 20.00-30.00.

Greencastle Livestock

**GREENCASTLE, PA
OCTOBER 17, 1996**

CATTLE: 141.
STEBERS: Select one at 53.00; Few Select 40.00-42.00; Few Standard 31.00-34.50.
COWS: Breaking Utility and Commercial 35.00-38.24, few low dressing down to 31.00; Cutter and Boning Utility 25.25-30.50; Canner & Low Cutter 22.25-26.25; Shells down to 14.50.
BULLS: Few Yield Grade 1 1220/1940 lbs, 37.25-38.50; Few Yield Grade 2

1375/1405 lbs, 35.00-36.50.
FEEDER CATTLE: STEERS: Few M1 & M2 300/430 lbs, 39.00-44.00; HEIFERS: Mx 300/360 lbs, few 23.00-27.00, one at 33.00.
CALVES: 297: Good couple 135.00-160.00 lbs, 37.00-40.00; Standard and Good 75/100 lbs, 26.00-33.00; Utility 50/95 lbs, 14.00-25.00; FARM CALVES: No 1 Holstein Bulls 90/120 lbs, 60/79 lbs, few to 88.00; No 2 Holstein Bulls 85/120 lbs, 30.00-52.50 lbs, few down to 25.00; Couple No 1 Holstein Heifers 80/95 lbs, at 110.000; Few No 2 Holstein Heifers 80/95 lbs, 30.00-45.00; Few Beef Cross Bulls & Heifers 100/120 lbs, 33.00-40.00.
HOGS: 0.
FEEDER PIGS: 6.
SHEEP: 4: Few Choice 80/110 lbs, 57.50-83.00.

Pennsylvania Livestock

**WAYNESBURG, PA
OCTOBER 17, 1996**

CATTLE:
SLAUGHTER COWS: Utility & Commercial 31.00-39.00; Cutter & Boning Utility 26.00-34.00; Canner & Low Cutter 20.00-28.00; Shells 20.00 & down.
BULLS: Yield Grade 1 1500/2000 lbs, 35.00-42.00; Yield Grade 2 1000/1400 lbs, 30.00-37.00.
FEEDER STEERS: M&L 1 300/500 lbs, 40.00-56.00; 250/280 lbs, 48.00-59.00; M 600/900 lbs, 43.50-57.00; HEIFERS: M 1&L 1 300/500 lbs, 35.00-46.00; L 1 400/650 lbs, 38.00-45.00; BULLS: M&L 1 300/620 lbs, 32.00-55.00.
CALVES: Veal: Prime 40.00-55.00; Choice 38.00-50.00; Good 35.00-48.00; Farm Calves: #1 Holstein Bulls 90/120 lbs, few 35.00-50.00; #2 Holstein Bulls 80/100 lbs, few 20.00-40.00; Beef X Bulls & Hfrs/Hd 20.00-55.00.
HOGS: Barrows & Gilts #1-2 210/255 lbs, 52.00-58.50; #2-3 255/280 lbs, 50.00-55.00; Sows: #1-3 300/500 lbs, 30.00-48.00; Feeder Pigs: 1-3 15/20 lbs, 5.00-17.00/hd; 1-3 2.5/3.5 lbs, 10.00-30.00/hd.
LAMBS: High Choice 80/100 lbs, 75.00-78.50; Choice 70/90 lbs, 76.00-86.50; Feeder Lambs: Good 60.00-80.00; Sheep 15.00-40.00; Fat Sheep 30.00 and down.
GOATS: Large 50.00-60.00/hd; Medium 20.00-40.00/hd; Small 10.00-34.00/hd.
HORSES: Horses 42.00-56.50; Ponies 20.00-44.50.

Lebanon Valley Livestock

Fredericksburg, PA

Tuesday, October 15, 1996

Report supplied by Auction

STEERS: HIGH CHOICE AND PRIME 68.25-70.25; SELECT 58.25-59.50; STANDARD 50.00-52.50.
HEIFERS: SELECT 56.25-57.75; STANDARD 38.00-45.00.

COWS: BREAKING UTILITY AND COMMERCIAL 37.50-40.00; CUTTER AND BONING UTILITY 30.00-35.50; CANNER AND LOW CUTTER 27.50-30.00; SHELLS 22.00 AND DOWN.
BULLS: YG#1 40.00-41.75; YG#2 37.00.
CALVES: STANDARD AND GOOD 40.00-50.00; UTILITY 10.00-20.00.
FARM CALVES: #1 HOLSTEIN BULLS 70.00-88.00; #2 HOLSTEIN BULLS 45.00-69.00; #1 HOLSTEIN HEIFERS 70.00-84.00; #2 HOLSTEIN HEIFERS 60.00-65.00.
HOGS: BARROWS AND GILTS US#1-2 53.50.
SOWS: US#1-3 48.50-51.50 AND 46.50-47.00; MEDIUM 40.00-45.00.
BOARS: 36.00-37.00.
SLAUGHTER SHEEP: 42.00.

New Holland Horses

**New Holland Sales Stables
New Holland, PA**

Monday, October 14, 1996

Report Supplied By Auction

261 HEAD. MARKET STEADY.
WORK HORSES: 835.00-1075.00.
DRIVING: 490.00-800.00.
RIDING: 410.00-960.00.
BETTER RIDING HORSES: 1050.00-1275.00.
REGISTERED RIDING: 825.00-1375.00.
KILLERS, HEAVYWEIGHTS: 690.00-790.00, **LIGHTWEIGHTS:** 390.00-510.00.
PONIES: 125.00-475.00.
COLTS: 125.00-410.00.

Valley Stockyards

Athens, Pa.

October 14, 1996

Report supplied by auction

HOLSTEIN HEIFER CALVES TO 160.00.
VEAL CALVES 28.00-41.50.
VEALER BULL CALVES TO 100.00.
SLAUGHTER CALVES 34.00 AND DOWN.
GRASSERS AND FEEDERS 15.00-31.00.
LAMBS 75.00-80.00.
SHEEP 20.00-34.00.
HOGS, 200-250, 45.00-55.00.
SOWS 33.00-45.50.
BOARS, NONE.
PIGS 10.00-25.00.
HEIFERS 24.50-37.25.
HEIFERS, FAT, 43.00-46.00.
STEERS, FEEDER, 18.00-37.50.
BULLS 22.00-38.50.
COWS, GOOD, 36.25-43.50.
COWS MEDIUM 30.50-35.75.
COWS, POOR OR SMALL, 28.75 AND DOWN.
CATTLE MARKET STEADY.
CALF MARKET STEADY.
HORSES 135.00-600.00.
GOATS 30.00-90.00.

NOTICE: Due to the observance of Columbus Day on Monday, Oct. 14, some market reports were unavailable this week.

COMMON STEERS: 54.00-59.00.
COMMERCIAL COWS: 32.00-39.50.
CANNERS-CUTTERS: 24.00-31.00.
SHELLS: 15.00-23.00.
CHOICE HEIFERS: 65.00-72.25.
SELECT HEIFERS: 60.00-64.00.
COMMON HEIFERS: 35.00-59.00.
GOOD FEEDERS: 45.00-60.00.
COMMON FEEDERS: 20.00-44.00.
BULLS: 30.00-40.00.

North Jersey Livestock

Hackettstown, NJ

**Report Supplied by Auction
Tuesday, October 15, 1996**

CALVES .05-.86.
COWS .20-.40%.
EASY COWS .11%-.21%.
FEEDERS 300-600 LBS. .15-.63.
HEIFERS .13-.38%.
BULLS .20-.49.
STEERS .15%-.65%.
HOGS .36-.50.
SOWS .43.
SHEEP .14-.51.
LAMBS EACH 39.00-88.00.
LAMBS PER LB. .15-1.05.
GOATS EACH 38.00-117.50.
KIDS EACH 4.00-80.00.
TOTAL: 1024.

Jersey Shore Livestock Market, Inc.

Auction every Thursday

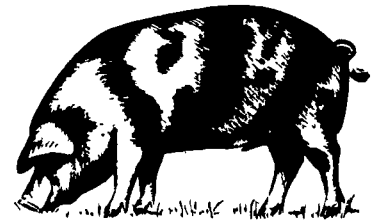
at 4:00 p.m.

Jersey Shore, Pa.

Report supplied by Auction

Thursday, Oct. 18, 1996

RETURN TO FARM CALF 40.00-80.00.
GOOD VEAL: 30.00-39.00.
COMMON VEAL: 5.00-29.00.
CHOICE STEERS: 65.00-71.75.
SELECT STEERS: 60.00-64.00.



FOR SALE - MANURE
20-25 ton trailer loads
\$7 to \$9/per ton depending on distance
VINTAGE SALES STABLES, INC.
Paradise, PA 17562
(610)458-5060 - (717)442-4181
L. Robert Frame, President

Trucks Available To Haul Feeder Cattle Out Of VA
Vintage Sales Stables Inc.
Paradise, PA
(717)768-8204 Days
(610)458-8518 or 5060 Eves.

FEEDER SALE
Wed. Oct. 23
7:30 P.M.
Four States Livestock
HAGERSTOWN, MD.
Exit 29 off I-70
301-733-8120

FEEDER CATTLE SALE
TUES. EVE
OCT. 22
APPROX. 7:15 P.M.
WESTMINSTER LIVESTOCK AUCTION
410-848-9820
HAY SALE
Every Tues at 11:00 AM

LEBANON VALLEY LIVESTOCK MARKET, INC.
1 mile East of Fredericksburg along Rt. 22
Every Tues. at 1:30 pm
Cattle Sale
2nd & 4th Tues.
Special Fed Cattle Sale
Dave Brubaker
(717) 865-2281

BINKLEY & HURST BROS. INC.
133 Rothsville Station Rd • Lititz, PA 17543
717-626-4705
Machinery Sales
M-F 7 to 5 Sat. 7 to 11:30
PARTS DEPT. HOURS:
Monday-Friday 7 AM to 5 PM
Saturday 7 AM to Noon
After Hours Emergencies
Call (717) 626-0885
(717) 626-5159
Sun. Closed - Lord's Day

FEDERAL EXPRESS • TRUCK FREIGHT
AIR FREIGHT • B&H DELIVERY SERVICE

CASE IH **Deere** **Case** **Scot**
TRAILERS
EXTENDED PARTS DEPT. HOURS EFFECTIVE THRU OCT. 31 To Better Serve You During The Busy Harvest Season
MON. ★ TUES. ★ THURS. ★ FRI. 7:00 AM-8:00 PM
WED. 7:00 A.M.-5:00 PM; SAT. 7:00AM-12 NOON
Busy As A Bee?
No Matter Where You Are - You're Never Too Far!
Your Parts Are Just A Phone Call Away!
KINZE **KELDERMAN** **WOODS** **ATHENS**
CORN PLANTERS & GRAIN CARTS AIR RIDE MOWERS & BLADES Diek Harrows Coulters Chisels Chisel Plows
This Is Our Fax No. 717-626-0996
If You Have A Fax No., Let Us Know, We Can Communicate With You By Fax

"We're proud to be part of a financially sound cooperative. Atlantic does its best to get the greatest return from the marketplace."
—Jeff Moore
Centreville, MD

ADC Is the Place To Be
Financial stability and the greatest return from the marketplace – the outstanding benefits that Jeff Moore refers to – are among the strengths of the premier dairy cooperative in the region.
Atlantic Dairy Cooperative has a 78-year history of excellent service to its members. Financially strong, ADC guarantees a market for all member milk and excels in maximizing returns. ADC is a leader in providing equity payments, quality bonuses and over-order premiums to members.
Nearly 4,000 dairy farmers agree that "ADC is the Place to Be".
For free information on how you can secure the future of your dairy farm operation, write or call:
Atlantic Dairy Cooperative
1225 Industrial Highway
Southampton, PA 18966
1-800-645-MILK