

Aluminum dump trailer, 24', \$3,200. (717)354-3105.

Army 6x6 truck, gas, winch, dump, 900x20 tires, good \$2800. 717-448-2987.

C65 Chevy truck, tandem axle, excellent shape, painted 4 years ago, shed kept, low miles. 717-966-0883.

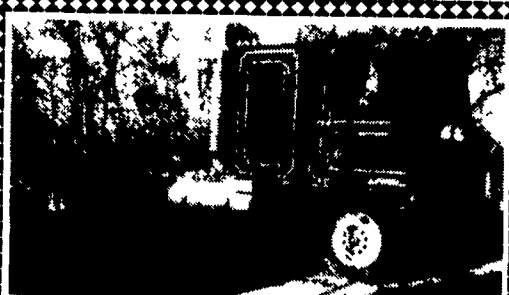
MACK PARTS FOR SALE: Engines, trans, rears, and all Mack parts 610-921-1971

FOR SALE: 1954 International twin screw AB, PS, with 14' wet lime spreader, \$4,200. Snowco rotary grain cleaner with auger for barley, wheat, rye, soybeans, \$1,250. (717)866-7213.

Iveco 12-12 14' Morgan box, 5 speed, 6 new tires, liftgate, asking \$6,900. (717)246-1191.

Lime truck: 1985 Mack R, single axle, 9spd, 300 engine w/1990 Limebox, 1990 hill lime trailer. (717)529-2538.

MOTORS
New & Rebuilt
350, 366, 427, 454
6.2 Diesels
Rebuilt & Used
Will Install
Roll Back Service,
(at cost)
717-762-6415



1977 Kenworth, 475 Detroit, 13 speed, new brakes, good rubber, new clutch, newly rebuilt trans, \$4,500 OBO
717-397-3869 after 5 pm

FOR SALE

1974 Ford Cimarron Motor Home
1 Owner, Less Than 24,000 Miles
\$2,500 OBO
Call 717-933-8853
Manada Construction

Sparta

20'-53' GRAIN TRAILERS
Double hopper steel grain body 63" slides standard, with 2 speed 51,000 lb. landing gear, Grote sealed lighting system with 5 side clearance lights, plumbed and ready for your axle and suspension for big money savings.

OPTIONS:

- Used Rebuilt Axle & Suspension Std.
- New Axles & Suspensions Available
- Hutch Spring Suspensions, Others Available
- Watson-Challin Air Ride
- Tires: Goodyear Bridgestone
- Sur-Lok Brand Rollover Tarp Installed

SPARTA MANUFACTURING CORP.
R R 2 BOX 111-B • TALLULAH, LA 71282
PHONE (318) 574-4982 • 1-800-865-8670 • FAX (318) 574-4980

COCKRELLS AUTO SALES
5270 East Trindle Rd. Mechanicsburg, PA
717-766-4227

TRUCK SPECIALS

89 CHEVY SUBURBAN 4X4 380 V4, Auto, Dual AC, Blue & Silver \$8,990	88 FORD F150 4X4 V4 Auto AC, Looks & Drives Like NEW! \$7,480
88 FORD F150 4X4 V4 Auto, AC PWBL \$7,980	92 CHEVY K1500 EXT. CAB 4X4, PS, PB AC \$11,980
92 NISSAN EXT. CAB SEV6 4X4 33" Tires Auto, AC \$15,480	93 NISSAN EXT. CAB 4x4 6 cyl, AC, Only 30,000 Miles 8 Months/5,500 Miles Warranty \$14,900

6 MONTHS OR 6,500 MILES WARRANTY

Klines Truck & Equipment Sales & Service
Hagerstown, Md. 21740
Located Off I-81 at MD/PA Line
(301) 797-4068

Many Other Cab & Chassis, Dumps & Specialty Trucks Available

1981 International S/A Dump DT 466 Allison Auto, PS, Air Brakes, Heavy Specs, \$13,250 with new paint; \$10,250 AS IS

1983 Ford LN 8000 S/A Dump 3208 Cat diesel 5 spd, 2 spd, PS, air brake, 27,500 GVW. Also 1985 with 7 spd 38,400 GVW '83 - \$13,750 w/new paint. '85 - \$14,250 w/new paint

1994 Chevrolet 3500 C & C 350, 5 spd, PS, AC, just turned 100,000 miles. Sharp truck

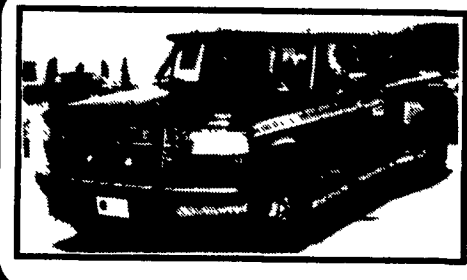
1983 Ford LN-8000 Ex S/A Tractor would make great dump. Recently Rebuilt 3208 Cat diesel, 10 sp, \$4,500

1983 International S-1900 w/Flatbed DT466, 5 spd, 2 spd, PS, Air Brakes, 32,000 GVW, \$8,250

Mark Vills • Pickups • Broncos • Stake Body • Crew Cabs

Contours • Aspires • Diesel Pickups • Mustangs • Thunderbirds

Explorers • Grand Marquis • XLTs • Custom Vans



Great Selection F250's & F350's Supercab & Crew Cab
Power-Stroke Diesels In Stock



'97 FORD EXPEDITION
All New sport Utility - 3 in stock. Many more on the way. Replaces the Bronco with style



'91 CHEVY SUBURBAN
4x4, Dual Air, All the Seats, 350 V8, Automatic. Only 34,000 miles



97 FORD F250 SUPER CAB 4X4
4X4 - Diesel, AT, AC, Work Truck #3209
List Price \$31,196
NOW ONLY \$29,999



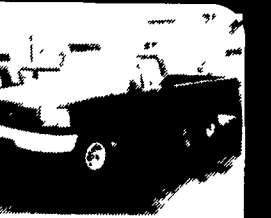
97 FORD F150 4X4
XL's & XLT's Available
Super Cabs & Regular Cabs



'96 FORD EXPLORER XLT, 4X4
only 9,500 miles, Nice, Piece, SUPER SALE PRICE **\$23,999**



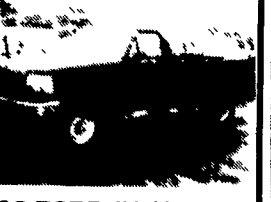
'95 FORD F150 4x4 SUPERCAB
XLT, Automatic, Leer Cap, Clean Truck #1633A



'95 FORD F150 4x4
Automatic, 6-cyl. XL Pkg, #1745A
Was NOW \$16,999 ONLY **\$15,399**



'95 FORD F250 S.C. 4X4
22,000 Miles, 460 V8, AT, XLT Loaded, #1629A
SALE PRICED AT **\$23,999**



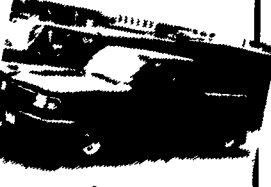
96 FORD F250 4X4 WORK TRUCK
V8, Automatic, XL Pkg
Was \$23,627 BLOW OUT **\$21,999**



97 FORD F250 4x4 SUPER CAB
7.3 Power Stroke Diesel, Auto, A/C, Awesome Work Truck #3209



96 FORD F250 4X4
Reg Cab, 351-V8, XLT, Automatic, #1625
Was \$27,949 NOW **\$25,999**

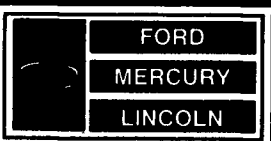


'94 FORD RANGER SUPER CAB 4X4
XLT, only 25,000 miles. Was \$17,999
NOW ONLY **\$16,499**



'97 MERCURY MOUNTAINEER 4X4
Loaded Sport Utility, V8 Engine, Automatic, #3052 - NICE -

Unless the Chapman Emblem is on Your Car or Truck, ... You Probably Paid Too Much!



CHAPMAN LEBANON

A Division of THE CHAPMAN AUTO GROUP

-20th & CUMBERLAND STS. - RT. 422 WEST
9-9 DAILY: 9-5 SATURDAY • SHEEHY HOTLINE (717) 272-7671 OR 533-5293

PARTS DEPT. OPEN
DAILY 8-5
SAT. 8-12
717-273-8168

Mystiques • Cougars • Continentals • Town Cars • 4x4s • Rangers