

**1994 Suburban, 3/4 ton**  
 4x4, turbo diesel, loaded, 50,000 mi,  
 like new cond.  
**\$27,000/OBO**  
**410/557-9559**  
 No Calls After 9:00 PM

# CASH FOR USED DIESEL TRUCKS

- WE NEED 1/2 TON TO ONE TON:
- FORD DIESELS
  - SUPERCABS
  - CREW CABS
  - DODGE CUMMINGS
  - 2WD or 4x4
  - DUALIES
  - DUMPS
  - UTILITY BODY
  - FLAT BEDS
  - CAB & CHASSIS
  - SUPER DUTIES

LOW MILEAGE ONLY PLEASE

Before you sell or trade your diesel  
 in somewhere else for LESS.

CALL US!

We Pay More for Used Diesel Trucks Than Anyone.

717-949-2000 **TRY US!**

OR  
 610-678-3243



RD 7, Box 405  
 Lebanon, PA  
 17042

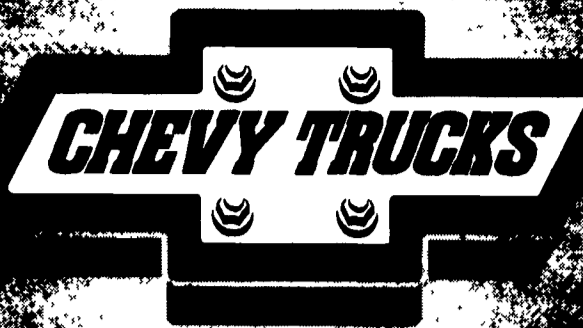
Ask for **KELLER BROS.**



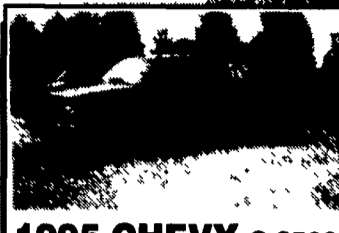
**International Truck with new**  
**Manure Spreader Tank,**  
 hydraulically driven.  
**Curry Supply Co., Curryville, Pa.**  
**1-800-345-2829**



Mack R-600 Rebuilt 300 with 12 speed, 50,000  
 Rears, 20,000 Front Axle, Air Dryer, New Brakes &  
 Drums, Tires 95%, Fresh Paint, MD. Inspected  
 July '96, with Freuhauf 32" Triaxle Dump Trailer,  
 New Brake Drums, 96" Sides, New Tarp.  
**\$26,500 O.B.O. Must Sell**  
**410-893-3623 or 410-592-2245 Tom.**



**1993 GMC G-2500**  
**VANDNA CARGO VAN**  
 3/4 Ton, White, 42,000 Miles, 350  
 V8; Auto, AC, PS, PB, Stock #7213  
**\$15,995**



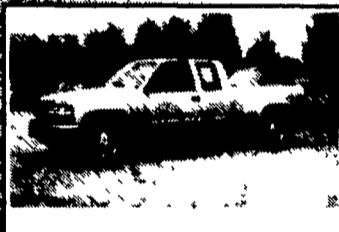
**1995 CHEVY C-3500**  
**EXT. CAB DUALY**  
 454 V-8, Auto, AC, Silverado, PW &  
 L, Leather Int., Green, 19,000 Miles,  
 Stock #2085  
**\$22,990**



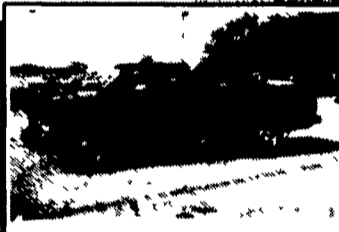
**1994 DODGE RAM**  
**1500 PICKUP**  
 Black, 35,000 miles, V-8, Atuo  
 AC, PW&L, Stock #5455  
**\$14,995**



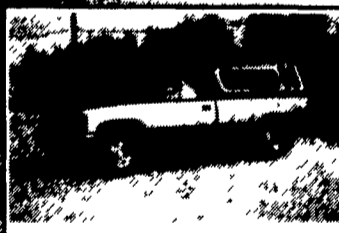
**1996 CHEVY**  
**K1500 EXT. CAB 4X4**  
 White, 10,000 miles, 350 V-8,  
 Auto, AC, PW&L, Stock#2564  
**\$25,995**



**1994 DODGE**  
**DAKOTA PICKUP**  
 Green, 43,000 Miles; 6 cyl, Auto,  
 AC, PS, PB, Stock #7605  
**\$11,995**



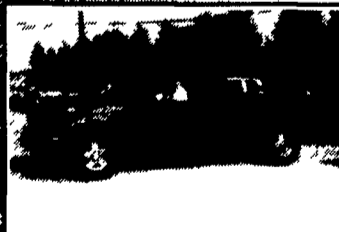
**1993 CHEVY**  
**K1500 4X4 CHEYENNE**  
 Black, 30,000 miles, V-8, Auto,  
 AC, Stock #1710  
**\$16,995**



**1993 GMC**  
**K1500 SLE 4X4**  
 Blue, 69,000 miles, V-8, AC,  
 Auto, Tilt & Cruise, Stock# 1382  
**\$14,995**



**1996 CHEVY**  
**C1500 EXT CAB**  
 Silverado; Blue, 12,000 Miles, 305  
 V8; Auto, AC, PW & L. Stock #8182  
**\$20,995**



**1995 GMC**  
**K1500 EXT.CAB 4X4**  
 Green, 17,000 miles, 350 V-8,  
 Auto, AC, PW&L, Stock #2866  
**\$23,995**



**1995 GMC SAFARI**  
**AWD SLE**  
 8 Passenger, Maroon & Gold, 36,000 Miles,  
 6 cyl, Auto, AC, PW & L, Stock #1809  
**\$19,995**

## WHITMOYER

FORD • MERCURY

### SALE OF SALES

SPECIAL FINANCING!

**1997**  
**FORD CONTOUR GL**

6 in stock

AS LOW AS  
**\$14,875**

Stk. #2747

**1996**  
**FORD RANGER XL**

ONLY  
**\$199<sup>00</sup>**  
 PER MONTH

AS LOW AS  
**\$9,875**

ONLY  
**\$107<sup>32</sup>**  
 PER MONTH

## YOUR FARM & PERSONAL TRUCK HEADQUARTERS

GOOD SELECTION OF 96-97 LIGHT AND H.D. TRUCKS

|  |   |  |  |
|--|---|--|--|
| <p><b>1994 Ford F150</b><br/>                 4x2 5 sp, A/C,<br/>                 Stock #4432</p>        | <p><b>1996 Ford F150</b><br/>                 New Leftover 4x4<br/>                 Auto, V8, \$ave.<br/>                 Stock #7580</p> | <p><b>1991 Ford F150</b><br/>                 Ext. Cab, 4x4, XLT,<br/>                 5 sp, V8, Stock #7335<br/>                 Reduced to <b>\$13,995</b></p> | <p><b>1993 Ford Explorer</b><br/>                 XLT, 4Dr, All Opt.<br/> <b>SPECIAL \$17,495</b></p>  |
| <p><b>1995 Ford Club Wagon XLT</b><br/>                 Low Miles, Stock #4635B<br/> <b>\$21,995</b></p> | <p><b>1994 Ford F150</b><br/>                 4x2, 5 sp, XL,<br/>                 Stock #6533A</p>  | <p><b>1987 Jeep Pickup 4x4</b><br/>                 Reduced To <b>\$5,495</b></p>  | <p><b>1997 Ford F150</b><br/>                 Ext. Cabs XLT, 4x4,<br/>                 7,000 Miles.<br/>                 Was \$30,850<br/>                 NOW <b>\$27,595</b></p> |

CUSTOMER SATISFACTION WORTH DRIVING FOR

## Whitmoyer

FORD • MERCURY

Rt. 283 & Rheems/E-town Exit • Elizabethtown  
 Sales Hrs: M-F: 8:30 am - 9pm • Sat. 9am - 5pm  
**367-7022 or 1-800-267-2088**  
 Next to Messick's Farm Equipment

# FAULKNER

CHEVROLET • GEO

PRE-OWNED CARS & TRUCKS

HARRISBURG PIKE, LANCASTER

## 397-0601