

1983 Chev. Suburban Limited Edition, 6.2 diesel, \$2500 610/488-1566

1984 Int 9670 feed and grain truck, 350 Cummins, 9 speed, tri-axle, heavy specs, \$19,500. Call, leave message, (717)546-8005

1985 GMC step van with freezer cooler box, used for market route, good condition, inspected, 100,000 plus miles, \$3800. 610/845-7826

1978 Freightliner 400 Cummins, Jake 15spd, has spreader body, all hyd, haul fertilizer, corn, lime, good tires, brakes, drive train \$7500/obo (814)685-3345 Eve

1980 Ford F350, dual wheels, 5th wheel, 24' livestock trailer, dump body, Western snowplow attachment, positive rear, 4-speed, 400CCI, will separate, very good condition, \$8000 610-298-3011 evenings.

1988 Freightliner conventional, 350 Cummins, recently overhauled, 9-spd trans, 42" bunk, good condition, asking \$14,995 717/624-4342

1989 GMC Topkick, dependable, good condition, runs well, \$15,000 OBO 610/967-2181

1989 R Model Mack 350, 9 speed, 12-38 on Camelback, wetline, very good, \$27,500. 717-359-9423 after 6pm

1990 GMC Topkick western hauler, 366 gas engine, 110,000 miles, excellent condition mechanically and appearance. \$23,000 OBO (412)586-7109

1996 Witzco 35-ton detachable low bed, 8'6"W, 22' well, 1500 miles, like new, \$16,000 717-359-9423 after 6pm

24' Gooseneck trailer, adjustable tail, 14,000 GVW, electric brakes, \$4000 OBO 717-871-3228

1981 IH, 9-speed, 350 Cummins, new rear, good condition. \$3800 717-293-8320

1982 Chevy C60 Series 14' stake dump, 26,000 GVW, 30,000 original low, low miles! Fair condition, needs tires \$2900 Call Mike, Judy or Jeff 610/626-2555

1982 Chevy C10, 4x4, 6.2 diesel, 4-speed, 126K, runs good, \$3500 717-273-5747

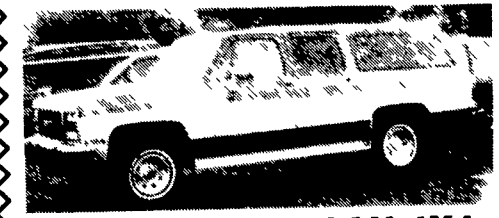
1983 Chevrolet Silverado 1/2-ton 4x4, 20,000 miles on new GM engine, solid work truck, \$4750 717/757-4238

'91 Ford E150 club wagon, 8 passenger, 302 EFI, auto, PS, PB, PW, PDL, AM-FM cassette, cruise, tilt, dual air, privacy glass, 2 tone blue, \$11,500 717-733-2873

'78 International fuel tanker 2500 gallon tank, pump, air brakes, PS, 33,000 GVW, air, PTO, 57,000 miles Jan be used for water truck, \$3700 814-793-3938



90 FORD CONVERSION VAN
V-8, Auto, Dual AC, Color TV, Clean As A Pin!
\$8,900



91 GMC SUBURBAN 4X4
8 Passenger, 350 V-8, Auto, Excellent Shape
\$12,900

MILLERS' IMPORTED CAR SERVICE
Route 15 North, Dillsburg, PA
717-432-3064

ALL STEEL REPLACEMENT TRUCK BED

7'Lx71"W or 85"W
8 1/2'Lx80"W or 90"W
10'Lx8"W, 12'Lx8"W

Also Available In 4'x7' and 4'x8'

5'x8' Starting at \$650
5'x10' Starting at \$695

UTILITY (TILT OR GATE MODEL) SIZES:
5'x8', 5'x10' 2000# GVW - 5'x10', 6'4"x10', 6'4"x12', 3000# GVW

UTILITY WITH GATE-SIZES
16'x76", 18'x76", 7,000# GVW,
20'x81", 12,000# GVW

CAR HAULER TRAILER
16'x77" & 18'x77" includes 4' Beavertail
7,000 lb. GVW 4' self storing ramps

STARTING AT \$795.00

Car Dollie

4'x7' Utility Trailer, 1500 lb. GVW, \$425.00
4'x8' Utility Trailer, 1500 lb. GVW, \$475.00
Luggage Carriers for Class
Hitches \$89 to \$99

Over 300 Trailers In Stock Starting At \$475.00 T-Plates DEALERS WANTED

HIGHWAY HYDRAULIC DUMP

5'x8', 3000# \$2,050
6'x10', 7,000# \$3,095
6'x10', 10,000# \$3,495
7'x12', 10,000# \$3,995

LOW PROFILE DUMP TRAILERS

6'x10' GVW low profile dump trailers w/ landscape gate

7,000# \$3,495
10,000# \$3,795

Starting At \$3795 w/4' Adj. Tail

GOOSENECK SIZES: 20'x8' 12,000# or 14,000# GVW, 24'x8' 14,000# GVW

DROP AXLE CONSTRUCTION 14' 7000# OR 12,000# GVW

DECK-OVER CONSTRUCTION 18'x8' w/Tail 10,000# GVW \$3,295

KUTZ FARM EQUIPMENT, INC.
Pine Grove, PA (717) 345-4882 FAX 717-345-2884
8 AM-5 PM Monday To Friday
8 AM-12 Saturday Or By Appointment

USED TRUCKS

'94 Chev 2500 8600 GVW, 350 FI Auto, PS, PB, AC, Cruise, tilt, PW, PDL, Rear Sliding Window, 2-tone teal & silver, 37,000 Mi Local one owner
\$17,500

'94 GMC 2500 SLE, 8600 GVW, 454 FI Auto, AC, Loaded, 4 10 Rear, 14,000 Miles
\$17,900

MARTIN'S AUTO SALES
1025 W. Main St., New Holland, PA 17557
(717) 656-6621

OVER 120 TRUCKS Preferred Warranties Available on Most Trucks

Bobby Gerhart's Truck World
2400 E. Cumberland St. Rt. 422 Lebanon, PA 17042 717-273-7995
Mon. - Fri. 9-8, Sat. 9-3

94 FORD F350 CREW CAB DUALY
Power Stroke Turbo Diesel 5-Spd., XLT, A/C, PW, PB, PL, PS, C, T, 40,000 Miles, Balance of Fact. Warranty. #F547

94 FORD F350 CREW CAB DUALY
7.3 Power Stroke Diesel, XLT, 5-Spd., A/C, PW, PL, C, 63,000 Miles, Bal. of Factory Warranty, #F544

93 DODGE D250
Cummins Turbo Diesel, AT, AC, Custom Walk-in Crew Cab, 24,000 miles, 5th Wheel & Class "A" Hitch, Auxiliary Fuel Tank #D176

95 GMC K3500 FLATBED DUALY
6.5 Turbo Diesel, 5-Spd. A/C, PS, PB, Bal. Factory Warranty, 45,000 Miles, Gooseneck Hitch #G164

94 CHEV 3500 EXT. CAB DUALY
4x4 6.5 Turbo Diesel, 5-Spd. A/C, PW, PL, C, T, Silverado Pkg., 57,000 Miles, Factory Warranty #C366

94 FORD F350 4X4
Crew Cab, 4x4, 7.3L Turbo Diesel, AT, OD, A/C, PS, PB, PW, C, T, 22,000 Miles #F493

93 FORD F250 4x4
XLT Lanat, 351 V8 AT, A/C, PW, PL, C T All New Tires, 72,000 Miles, Real Nice #F539

94 CHEV 2500 EXT. CAB 4X4
Shortbed V8, AT, AC, Complete w/Western Power Angle Plow 13 000 Ong Miles #C360

93 CHEV K3500 CREW CAB DUALY
4x4 6.5L Turbo Diesel, AT-OD, A/C PW PL C, T Silverado Pkg, Bal Factory Warranty, 70 000 Miles #C367

92 FORD F350 CREW CAB DUALY
XLT Lanat, 7.3 Diesel, 5-Spd., AC, PW, PL, C, T. Only 48 000 Miles #F477

94 FORD F250 XLT 4x4
7.3 Turbo Diesel, AT, A/C, PW, C, T, 8,600 GVW, 58,000 Miles, #F541

91 FORD F250 SUPER CAB
XLT Lariat, 7.3 Diesel AT, A/C PW, PL, C, T 8 800 GVW, Only 66,000 Miles #F549

87 FORD E350 CUBE VAN
6.9 Diesel AT PS PB, Runs Excellent Very Clean High Miles SPECIAL \$7,995

90 CHEV C3500 1-TON CREW CAB
Single Wheel 350 AT A/C 98 000 Miles #C319 SPECIAL \$10,995

95 CHEV K2500 EXT. CAB 4X4
454 EFI, AT-OD, A/C PW PL Silverado, only 30 700 miles #C355

93 DODGE 2500 CLUB CAB
Cummins Turbo Diesel, 5 spd., A/C, PW, PL, C, T 56,000 miles Balance of factory warranty #D167

94 DODGE 3500 9 FT. DUMP
Cummins Diesel, 5 Spd., PS, PB, 11 000 GVW, Only 47 000 Miles Red w/Grey Interior #D179

88 CHEV K2500 4x4
Meyer Power Angle Snow Plow, 350 V8, AT, PS, PB, Only 48,000 Miles, Excellent Condition #C368

95 FORD F150 CREW CAB 4X4
Centurion Conversion, 351 V8 AT OD A/C, XLT Trim, Alum Wheels 30 000 Miles

95 GMC 3500 SERIES VANDURA
Extend Van 1 Ton AT OD 454 V8 9 200 GVW 79 000 Miles Very Nice #G167

93 GMC 3500 HD,
L-Pack w/10 Ft Stake Body, 6.5L Turbo Diesel, AT, PS, PB, 77,000 Miles, 15 000 GVW, Black w/Tan Interior #G159

95 DODGE RAM 2500 LARAMIE 4x4
SLT Pkg., V-10, 5 Spd., AC, PW, PDL, Cruise #D177

92 DODGE 350 LE EXT. CAB 4X4 DUMP
Cummins Turbo Diesel, AT, AC, PS, PB, PW, PL, C, T, Stereo, 41,000 miles #D166

88 FORD F250 SUPER CAB
4x4, XLT Lanat, 7.3 Diesel, AT, A/C, PW, PL, C, High Miles but looks & works good #F533

93 DODGE D250 CLUB CAB 4X4
Cummins Turbo Diesel AT A/C PW PL C T LE Pkg Factory Warranty Only 26 500 Miles Like New Truck #D173

84 FORD F250 4x4
with Flat Bed, 351 V8, 4-Spd., PS, PB, Only 78,000 Miles, New Paint, Must See #F548 SPECIAL \$7,995

91 CHEV. C2500
350 V8, AT OD A/C, 8600 GVW Only 49,000 Mi #C349 SPECIAL \$11,900