



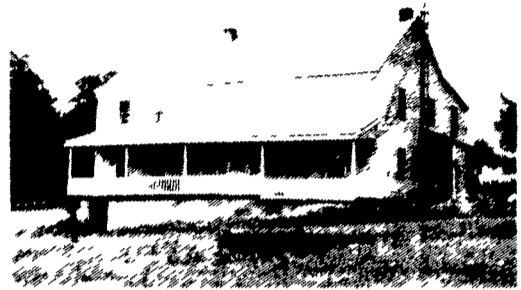
# ESTATE AUCTION

**SAT., OCT. 19, 1996**  
**AT 9:00 A.M.**

## MAHANTONGO VALLEY FARM

Midway between KLINGERSTOWN and PITMAN next to the Mahantongo Valley Elementary School. From I-81, Exit 34, take Route 25 West of Hegins, turn right onto Route 125, cross over Mahantongo Mountain and go to the 1st stop sign at Jack's Spot Cafe, turn left, continue 3 miles to sale site.

**84 ACRES, more or less** approximately 53 ACRES in High State of Cultivation, 2 ACRES Orchard, balance Pasture and Wooded Land with some nice Saw Timber; Small Stream; Frontage on both sides of the Klingerstown to Pitman Road.



12-room Log & Frame Dwelling with Bath & Electric Heat; Vinyl Siding Exterior; Bank-type Barn; 2-Car Garage; other Outbuildings. Because this dwelling has two inside stairways, it could be converted into a 2-family residence. Check it out!  
**FOR INSPECTION CALL: 717-425-2273 or 758-4439 After 5:00 P.M. INSPECT NOW, ARRANGE YOUR FINANCING, BE PREPARED TO BID AND BUY AT THE AUCTION.**

**TERMS: 10% down the day of sale, further terms and conditions to be announced when real estate is offered at 11:00 a.m.**

### HOUSEHOLD FURNISHINGS & AUTOMOBILE & 4-WHEELER

Whirlpool 30" Range & GE Refrigerator both in almond; Whirlpool Automatic Washer; GE Dryer; Sylvania Color TV w/Remote; Humidifier; Wringer Washer; Chrome Dinette w/8 Chairs; Sofabed; (3) Recliners; Occasional Chairs; Stereo Radio/Phonograph w/8-Track Tape Deck; **AIR CONDITIONER used one season**; Stands; Table Lamps; Utility Cabinets; Dishes including; Set Dinnerware; Cooking Utensils; Sm. Electric Appliances; Microwave Oven; Ice Cream Freezer; Kenmore Vacuum Cleaner w/Power Nozzle; Electric Broom; Window Fan; Foot Fixer; Kero-Sun Heater; Exerciser; Girls' Bicycle; Christmas Decorations; Battery Charger; Ladder; Skid Tank; Garden Tools; Fench Stretcher; String Trimmer; Sabre Saw; many other items not listed.

**1984 CHEVROLET IMPALA 4-DR. AUTOMATIC, one owner, 54,785 original miles**

**CRAFTSMAN 12-HP LAWN TRACTOR 40" MOWER DECK w/BAGGER**

**HONDA 250 FOURTRAX 4-WHEELER 5500 SINGLE PHASE ALTERNATOR w/WISCONSIN ENGINE**

### ANTIQUES, COLLECTIBLES & GUNS

3-Pc. Oak Bedroom Suite; Oak Dresser; Oak T-Back Chairs; 3-Pc. Waterfall Bedroom Suite; Spindle Back Chairs; Cottage Style Dresser; Ingraham Mantel Clock; Camel Back Trunk; Wicker Baby Carriage; **QUILTS Double Wedding Ring, Pansy Applique, etc.; Quilt Tops: Buggy Robe; Kitchen Cabinet w/flour Sifter; Kerosene Light, Pressed & Pattern Glass; Depression & Milk Glass; Hen on Nest; Salt & Pepper Collection, etc.; Tin Doll House, Doll Carriage & Stroller; several Dolls, need repair; Unique Toy Typewriter; Miners hat w/Carbide Light; Glass Butter Churn; Wooden Ironing Board; Strip Carpet; Crochet Rugs; Life Magazine from 50's; Catalogs; Slaw cutter; Cast Iron Skillets; Popcorn Popper; Meat Hooks; Scythe; Huckster Scale; Coal Bucket; 1/2 Bu. Wooden Measure; Crosscut Saw; Meat Grinder; Hay Hook; etc.**

**GUNS including: Keystone Arms double Barrel 12 Ga. Hammer Gun; Stevens Model 620 Pump 12 Ga.; 12 Ga. Single Shot; Model 1902 Winchester 22 Rifle Single Shot.**

Lunch Available.

ESTATE OF

**RALPH L. FETTEROLF**

Eleanor Williard and Mary Schreffler,  
Co-Executrices

Joseph C. Michetti, Jr., Attorney-at-Law

MIKE, AUCTIONEER AU 1599-L  
GEORGE, REALTOR &  
AUCTIONEER, AU209-L  
(717)425-3313

**DEIBERT**

## Public Auction Register

Closing Date Monday 5:00 P.M.  
of each week's publication



**WITMAN AUCTIONEERS, INC.**

## Tyson Foods, Inc.

**63.88 Acre Farm**  
**East Earl Twp.**  
**New Holland, PA**

Zoned I, Industrial District, Ru, Rural District.  
**WED., NOV. 13, 1996 1 P.M.**

Located at Orlan Road, New Holland, PA next to Tyson Foods, Inc. & Zausner foods Corp.

Directions: Take Rt. 23 to Custer Ave. to Orlan Road.

**OPEN HOUSE DATES:** Sat. Oct. 19, Sat. Oct. 26 & Sat. Nov. 2, 12-3. For additional appts. call Auction Firm, 665-5735.

**REAL ESTATE FEATURES:** 63.88 Acre Farm with large amt. of road frontage, 2 1/2 story frame w/vinyl siding house. 5BRs, kitchen, DR, utility rms, full bath, 45x72 Stone & frame bank barn. 32x68 frame tobacco shed. Other out bldgs include chicken house, small shed & garage. For complete brochure contact auciton firm for brochure #13.

**TERMS: 10% down, balance at settlement.**

**Atty: Blakinger, Byler & Thomas**  
**Dan Blakinger**  
**717-299-1100**

**AUCTION FOR:**  
**TYSON FOODS, INC.**

Witman Auctioneers Inc.  
Auctioneers, Appraisers and Liquidators  
Jay M. Witman, AU001127-L  
Luke R. Witman  
657 Fruitville Pike  
Manheim, PA 17545  
(717) 665-5735

## PUBLIC SALE

**OF**  
**TRACTORS, FARM EQUIPMENT**  
**FURNITURE, H.H. GOODS**  
**1978 GMC PICK-UP**

**SAT., OCTOBER 19, 1996**  
**8:30 A.M.**

Located at Mill & Beagle Roads, 2 miles NW of Elizabethtown, PA. Follow arrows from #230 West of E-Town, Right on Hoffer to Hertzler to left on Mill Road.

Farmall 460 Diesel & Gas Fast Hitch Tractors, Farmall "M" w/Live Hydraulic, Farmall Super "C" w/Cults-Good Condition, 3 - Farmall "H" 1939 Tractors, Farmall Cub, Farmall "B", Farmall "SMTA" w/Power Steering New Paint & Tires & Ex. Cond., Farmall 140, Cub Cadet 1450 w/44" Mower, McCormick Deering W4, NH L325 Skid Loader w/Bucket & Forks, IH 411 4 Bot. 14" FH Plow, #37 IH 10' Transport Disc, 9' Double Cultipacker, IH Spring Harrow, IH #990 Mower Conditioner, IH Baler w/Thrower, Hay Rake, Metal Rack Hay Wagon w/Wenger GT Running Gear & Others, Flat Wagons, Disc, Elevator, Field Sprayer, IH Balance Head Sickle Bar Mowers, Bin Wagons, IH #234 Mounted Corn Picker, Forage Wagon, Cattle Trailer & Others, IH 4 Row Corn Planter, Grain Drill, Manure Spreader, Grain Auger, HM Post Hole Digger, Fast Hitch Equip., Used Farmall Tractor Parts For "A" "B" "C" "H" "M" & "460D", Complete Wide Front For Super "C", Cub Cadet Chipper Shredder, Hog Troughs, Walking Plow, Jacks, Log Chains, Chain Hoist, Stihl Weed Eater, Wide Barn Siding, Feed Chest, Lawn Sweeper, Double Trees, 5 HP Vertical Air Compressor, Welder, Stihl Concrete & Chain Saws, Generator, Wood Lathe, Hand and Power Tools, Heater, Parts Bins, Tool Boxes, Wagon Wheels, Cement Mixer and Many Other Farm Items. **Tractors Sold At Noon.** 8 Pc Dining Suite, 4 Pc Bedroom Suite, Cherry Drop Leaf Table, Modern Corner Cupboard, Walnut Server, Cedar Chest, Microwave, 6 Dining Chairs, Rocker, Sofa Beds, Trundle Bed, Crocks, Kitchen Items, Maytag Washer & Dryer, 45-70 Springfield Gov. Rifle, 16 Ga. Bot Action, 12 Ga. Single, Pony, Pony Cart, Harness, and many other items not listed. Not responsible for accidents.

**SALE BY**  
**ROY & RUTH BRENEMAN**  
**DOUGLAS & CHARLENE BRENEMAN**

"Abe" Shaffner's Auction Service Inc.

Auctioneers:  
Harold "Abe" Shaffner  
829-L (717) 653-5689  
Mark Diffenderfer  
367-8000

**FOOD STAND**

2007 St. ... Lancaster Farming, Saturday, October 12, 1996-B43

**SAT. NOV. 2 - Horse Sale,** Mel's Stables. Sale Held at Wallace Rd. Directions: From Rt. 23 in New Holland, Go South on Brimmer Ave., Go 2 Mi. South on New Holland Road to Hill Rd. Turn Left on Hill Rd. Proceed 1.2 Mi. to Sale on the Left, From Rt. 340 E. of Intercoourse Take New Holland Rd., 2.5 Mi. to Hill Rd., Right on Hill Rd. to Sale on Left.

**SAT. NOV. 2 - 8:30AM** Real estate, antiques, farm equip., household goods. Rt. 234, 5 miles W. of York. Clarence W. Altland, seller. **Rentzel's Auction Service.**

**SAT. NOV. 2 - 9AM** Warehouse equip, office & store equip, inventory. 406 N. Main St., York Co., Pa. I-83 Exit 1 W to light, N 1 mi. to sale on L. Bolton Enter-

prises, Inc., owners. Kenneth Keeny, auct.

**SAT. NOV. 2 - 9AM** Real estate, antiques, household goods, blue deco. crocks, Roseville items, riding mower, snow blower. at 46 Penn St., Washington Boro, Manor Twp, Lanc. Co., Pa. By Robert G. Killeffer. Howard E. Shaub, auct.



## PUBLIC AUCTION OF VALUABLE REAL ESTATE

~ 56 Acre M/L Farm ~



**Wednesday, Oct. 30, 1995 • 1 PM**

**2083 Forry Rd., Lancaster, East Lampeter Twp., PA**

Dir.: Between Hartman Station Rd. & Willow Rd. East of Lanc. on Rt. 340, turn left on Horseshoe Rd. at CV High School, turn left on Willow Rd, right on Forry Rd. Sale on left.

56 Acre M/L Farm w/approx. 2,200' Road Frontage. Lg. 2 1/2 Story Frame Barn w/Tin Roof, 14'x50' Concrete Stave Silo, Tobacco Shed, Corn Crib, Separate 3 Car Garage.

2 1/2 Story Brick & Frame House - Consist of Kitchen, Dining Room, Living Room, Laundry Room, Wash House. 2nd Floor 5 Bedrooms, Full Bath. Concrete Basement, Attic Storage Area. On-Site Well & Sewer System. Zoned Rural.

*Land is level & in high state of cultivation.*

*Excellent location w/some of Lancaster County's finest farm land!*

**OPEN HOUSE:** Sat., Oct. 19, 1-3 pm; or call (717) 394-8771 or (717) 687-6857 for appointment.

**TERMS: 10% down, balance on or before December 30, 1996**

**ATTORNEY: James J. Kirchner**

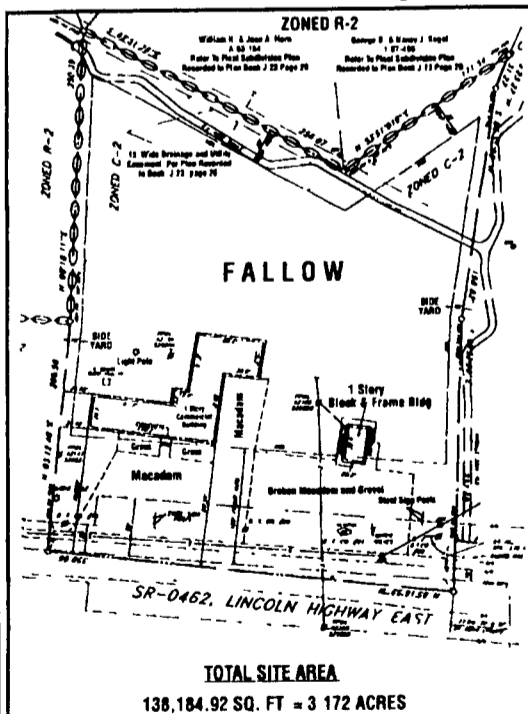
Sale For: **Clyde Stumpf & Son, Inc.**

**MILLER & SIEGRIST AUCTIONEERS**  
(717) 687-6857 AU-1723L

## PUBLIC AUCTION

**OF**  
**3.127 ACRES COMMERCIAL REAL ESTATE**  
**Surplus Auto. Supplies & Shelving, Etc.**

**Thurs., October 24, 1996**  
Personal Property - 9 a.m. Real Estate - 12 Noon  
Location: 2007 Lincoln Highway East, Lancaster, PA



This 3.127 acre tract of Commercial Land is across from the entrance to the new WAL-MART which is scheduled to be open before auction date.

This fine desirable tract will have probably the highest traffic count of any commercial area in Lancaster County. There is 350' frontage and has an exit from Route 30 right next to the property. There is an old building on the property which will be offered for sale the same day with conditions it be torn down and removed. There has been a phase 1 Environmental study done and the report will be given to all interested bidders. This property also has available for your inspection a traffic pattern

from Penn-Dot. This property has great potential for most any retail or wholesale business you may desire.

Personal property is hundreds of feet of steel shelving, computers, desks, Auto surplus new & used merchandise.

**TERMS: 10% Down day of Auction. Balance on or after January 2, 1997 but before March 1, 1997.**

**"AUCTION OF PROPERTY IS SUBJECT TO PRIOR SALE"**  
2% Broker Participation. Call Auct. For Details.

Sale by:  
**Jay R. Goretzke Jr., Owner**

For appt. to see: Call  
**Sanford G. Leaman, CAI Auctioneer**  
(717) 569-4264  
Toll Free 1-800-836-8113  
Lic. #Au-532-L



Food by: **Walter's Concessions**