

FOR SALE



1974 Ford Cimarron Motor Home

1 Owner, Less Than 24,000 Miles
\$2,500 OBO
 Call 717-933-8853
Manada Construction

USED TRUCKS



'94 Chev. 2500. 8600 GVW, 350 FI Auto, PS, PB, AC, Cruise, tilt, PW, PDL, Rear Sliding Window, 2-tone tan & silver, 37,000 Mi. Local one owner

\$17,500



'94 GMC 2500 SLE, 8600 GVW, 454 FI Auto, AC, Loaded, 4:10 Rear, 14,000 Miles

\$17,900

MARTIN'S AUTO SALES

1025 W. Main St., New Holland, PA 17557
(717) 656-6621



1979 White Expediter
 w/Jake, Heavy Specs, Stainless Steel Spreader With Agitator, Used For Chicken Manure

\$27,500

717/684-6680

HOSTETLER

Truck Bodies & Trailers
717-667-3921

Milroy, PA - Located between Lewistown And State College on Rt. 322 in PA.



Dump Trailers,
 5'x8' Single Axle 5000# GVW **\$2,760**
 6'x10' Tandem Axle 7000#GVW **\$3,495**
 6'x10' Tandem Axle 10,000#GVW **\$3,895**



Mortiz Slant Load Horse Combo Trailers, Rubber Torsion Axles, Swing Open Divider and Dressing Room Wall
 6'x13' 2 Horse **\$3,250**
 6'x16' 3 Horse **\$3,600**

Financing Available for Individuals

Leasing Available for Business or Farm Use



New Designed Corn Pro Bumper Pull Livestock Trailers, Rubber Torsion Axles, Treated Pine Floor
 6'x16' 3500# Axles **\$3,250**
 6'8" Wide x 16' Long 3500# Axles **\$3,395**
 6'8" Wide x 16' Long 6000# Axles **\$3,895**



Grain Bodies, Removable Sides, Various Rears Available, With or Without Hoist 16" w/40 Sides Not Installed
\$2,450



Heavy Duty Gooseneck Contractor Dump Trailer, 14,000# GVW, Electric Hydraulic Hoist, Double Acting Tailgate
\$7,650



42' 5th Wheel Drop Deck Trailer, Vacuum Hydraulic Brakes
\$2,500



Hostetler 7'x12' Contractor Dump Trailer, Dump Truck Body, with Truck Scissor Hoist, 10,000# GVW, 30" Front with 20" Sides & Tailgate, Heavy Duty
\$5,695



6'x18' Gooseneck Enclosed Trailer, Heavy Duty Construction, 1000# GVW, Good Condition
\$2,900



14' Hostetler/Knapheide Grain Dump Trailer, 14,000# GVW, 40" Removable Grain Sides
\$7,760

SPANKEY'S

NEW TRUCK CENTER

717-691-5262 or 717-737-7777
 E. Main St., Mechanicsburg, PA

1995 Chevy K-3500 4x4 Dual Wheels, 6.5 Liter Turbo Diesel, 5 speed, Silverado, Loaded.

1993 Chevy K-3500 4x4 X-Cab, 6.5 Liter Turbo Diesel, Automatic, 42,000 Miles.

1993 Chevy Suburban 4x4 350, V-8 AT, 3rd Seat, Towing Pkg. Loaded, \$23,995.

1993 Chevy Suburban 4x4 V-8, AT, Loaded, Sport Wheels, Reduced, \$22,995.

1993 Chevy Blazer 4x4, 350 V-8, AT, Silverado, Excellent Condition!

1990 Range Rover 4x4 3.9 Liter V8, Leather, One of a Kind, Hurry!

1986 Ford F-250 4x4 Stick, AC, V-8, Great Work Truck, Only \$7,995.

Jeep Grand Cherokee's, 14 in stock many V-8's, 1993-1996 From \$17,795

OVER 95 TRUCKS & 4X4S AVAILABLE.

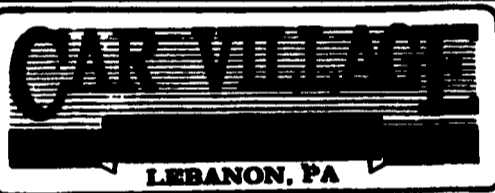
SPORT UTILITIES OF ALL MAKES AND MODELS!!

SEE US AT OUR WEB SITE <http://www.spankeys.com>

Nicest Pre Owned Trucks Anywhere!

RTE. 422 WEST LEBANON, PA

(Across From Lebanon Valley Mall)



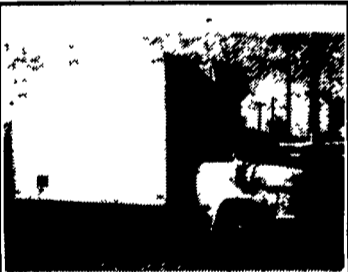
PHONE 717-274-2000

Business Hours
 Mon - Thurs 9-9
 Fri 9-5
 Sat 9-4

SPECIALIZING IN HEAVY DUTY TRUCKS



91 DODGE 350 FLATBED
 Very Versatile Around the Farm, Cummins Turbo Diesel, Auto, Dual Rear Wheels, Excellent Body



ICY COLD REEFER
95 CHEVY 30 H.D.
 Heavy Duty 14,100 G.V.W.
350 V8 - Auto 11,000 miles
14 ft. insulated body like new



FORD 1 TON DIESELS 4X4
 Hard to Find We have two 96's One Auto - One 5 Sp., Low Miles, Factory Warranty, H.D. Frt. Axle - Ready to Work



LIKE NEW: 96 FORD F250 XLT 4X4
 You can't beat this one. Only 200 miles. Powerstroke Turbo Diesel, AT, A/C, 4:10 gears. Lockout hubs. Not too many of these around.



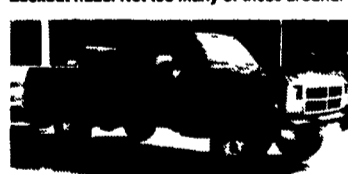
CUMMINS TURBO DIESEL 4X4'S
 We have 2 "95's" One Auto - One 5 sp. Both Are Perfect - Come See



CATTLE BODY
94 CHEVY 3500 H.D.
 Turbo Diesel Auto, 44,000 miles, 14 ft Eby Aluminum Body. Real Nice



POWERSTROKE TURBO DIESEL
95 FORD F250 SUPER CAB XLT
 It's a Beauty Auto. A/C Captain Chairs 4:10 Limited Slip Axle. 2 Tone Paint Remainder new TK Warranty 60,000 Miles. \$24,900



CUMMINS TURBO DIESEL 91 DODGE 250
 4X4 Runs great. Auto Heavy Duty 3/4 Ton. Lock out hubs. \$12,900



454 SUPER CAB 4X4 93 CHEVY K2500
 Perfect only 34,000 miles, Local Trade Powehouse, 454 I.I., Auto, AC, H.D., Trailer Pkg., 2 tone Paint. It's A Beauty



89 GMC CREW CAB
 2 Wheel Drive, 350 V8, 4sp, Vinyl Seat & Interior, Great Work Truck, Dark Finish



4X4 SHORTBED SUPER CAB
94 CHEVY K1500 SILVERADO
 6 ft. Bed, Aluminum Wheels, 350 FI, V8, Auto, A/C, Tilt, Cruise, AM-FM Cassette, Lots For Little \$17,900



EXTENDED LENGTH CARGO VAN
95 FORD E-250 VAN
 Very, Very Clean, 45,000 Original Miles, Big Fuel Inj. 6 cyl. Auto, A/C, Tilt, Cruise



4x4 CREW CAB DUALY
89 FORD F350 XLT

7.3 Diesel with ATS Turbo, Auto, A/C, Tow Pkg., Lock Out Hubs, Custom Paint, Running Boards



POWERSTROKE TURBO DIESEL
95 FORD F350 CREW CAB DUALY
 Beautiful XLT Pkg. Auto, A/C, All Options, Aluminum Wheels, Tow Pkg., 4:10 Gears, 11,000 Miles



BIG DUALY
87 CHEVY CREW CAB SILVERADO
 Gooseneck Hitch, 454 I.I., Auto, A/C, Chrome Simulators, Excellent Body & Paint



SUPER DUTY CHASSIS
96 Ford Powerstroke Turbo Diesel, AT, 161 W.B., 84" C.A.
94 Ford Powerstroke Turbo Diesel, H.D., 5 sp., 137 W.B., 80" C.A.



4X4 DUALY CLUB CAB 93 DODGE 350 LE
 A Mean Tow Machine, Cummins Turbo Diesel, Auto, A/C, 30,000 miles, Chrome Simulators, A nice one.



4x4 DIESEL SUBURBAN Hard To Find - Good To Own - 94 CHEVY K2500 SILVERADO
 6.5 Turbo Diesel, Auto, Frt. & Rear A/C, 3Rd Seat, Barn Doors, Tow Pkg. & Lots More



TOWING MACHINE
93 FORD CREW CAB DUALY
 XLT Pkg. Only 38,000 Miles, 7.3 Diesel, 5 Sp., O/D, A/C, Tow Pkg., 4:10 Gears, Chrome Simulators



FORD 4x4 Diesel Super Cabs
96 F250 XLT - Powerstroke Turbo Diesel Auto, A/C, All options, New TK Warranty, 3 Available.



4 DOOR 4X4 TURBO DIESELS

97 Ford F350 XL - 5 sp, A/C 200 miles

94 Ford F350 XLT - 5 sp, A/C, 39,917 miles