

Greencastle Livestock

Greencastle, Pa.

Report Supplied by Auction
September 30, 1996

SLAUGHTER CATTLE RECEIPTS:
461 HEAD.

SLAUGHTER STEERS: 141 HEAD, 1.00 HIGHER TREND. HIGH CHOICE AND PRIME 2-4 71.50-76.00; CHOICE 2-3, 950-1075 LBS. 60.00-65.00; CHOICE 2-3, 1075-1375 LBS. 64.50-71.00; CHOICE 2-3, OVER 1375 LBS. 62.00-67.75; CHOICE 4, ALL WEIGHTS 61.00-66.75; SELECT AND CHOICE 1-2, 950-1100 LBS. 51.00-57.50; SELECT AND CHOICE 102, 1100-1375 LBS. 53.00-61.00; SELECT AND CHOICE 1-2, OVER 1375 LBS. 53.00-61.50.

HOLSTEINS CHOICE 2-3, 1050-1450 LBS. 55.00-60.00; SELECT 1-2, 1050-1450 LBS. 45.00-54.00.

SLAUGHTER HEIFERS: 28 HEAD. TREND 1.00 HIGHER. CHOICE 2-3, 850-1000 LBS. 58.00-64.00; CHOICE 2-3, 1000-1250 LBS. 63.00-70.75; CHOICE 4, ALL WEIGHTS 60.00-66.50; SELECT AND CHOICE 1-2, 850-1000 LBS. 49.00-57.00; SELECT AND CHOICE 1-2, 1000-1250 LBS. 47.00-56.00.

HOLSTEINS CHOICE 2-3, 1000-1350 LBS. 50.00-56.00; SELECT AND CHOICE 1-2, 1000-1350 LBS. 40.00-49.00.

SLAUGHTER BULLS: 22 HEAD.

STEADY TREND. YG#1, ALL WEIGHTS 37.00-41.75; YG#2, ALL WEIGHTS 30.00-36.50.

BULLOCKS: 8 HEAD. CHOICE 1-3 950-1150 LBS. 38.00-45.00; CHOICE 1-3 1150-1375 LBS., NONE; SELECT 1-2 950-1250 LBS. 45.00-56.00.

COWS: 262 HEAD, TREND STEADY TO 1.00 HIGHER. BREAKING UTILITY AND COMMERCIAL 32.00-37.00; CUTTER AND BONING UTILITY 28.00-33.50; CANNER AND LOW CUTTER 27.00 AND DOWN.

STOCKER AND FEEDER CATTLE RECEIPTS: 167 HEAD. LIGHTWEIGHT CATTLE 2.00-4.00 LOWER; YEARLINGS STEADY. BEEF TYPE STEERS 200-400 LBS. 40.00-51.00, BULLS 39.00-50.00, HEIFERS 32.00-44.50; 400-600 LB. STEERS 45.00-52.00, BULLS 38.00-44.00, HEIFERS 30.00-42.00; 600-800 LB. STEERS 44.00-55.50, BULLS 37.00-44.00, HEIFERS 37.00-45.00; 800-975 LB. STEERS 47.00-56.50, BULLS 36.00-44.50, HEIFERS 40.00-49.00.

HOLSTEINS AND DAIRY CROSS 200-400 LB. STEERS 30.00-40.00, BULLS 28.00-35.50; HEIFERS, NONE; 400-600 LB. STEERS 30.00-36.00; BULLS 25.00-30.00; HEIFERS, NONE; 600-800 LB. STEERS 32.00-40.50, BULLS 22.00-31.00; HEIFERS, NONE; 800-975 LB. STEERS 33.00-41.00, BULLS 25.00-33.00; HEIFERS, NONE. CALVES: 545 HEAD. STEADY

TREND. CHOICE 150-300 LBS., NONE; GOOD 150-300 LBS. 45.00-67.50; GOOD 100-150 LBS. 35.00-50.00; GOOD 80-100 LBS. 25.00-40.00; STANDARD 80-100 LBS. 20.00-30.00; STANDARD 80 LBS. AND DOWN 20.00 AND DOWN.

CALVES RETURNING TO THE FARM, STRONGER TREND. HOLSTEIN BULLS OVER 100 LBS. UP TO 88.00, UNDER 100 LBS. UP TO 82.50; HOLSTEIN HEIFERS OVER 100 LBS. UP TO 197.50 UNDER 100 LBS. 150.00; BULLS OVER 90 LBS. 65.00; HEIFERS OVER 90 LBS. 40.00.

SHEEP AND LAMBS: 81 HEAD. STEADY TREND. CHOICE 80-100 LBS. 77.00-85.00, 100-120 LBS. 75.00-84.00; 120 AND OVER 60.00-74.00; LAMBS 60-85 LBS. 77.00-91.00; LIGHT LAMBS 90.00-104.00.

SHEEP: EWES LEAN 32.00-40.50; EWES FAT 28.00-33.50; YEARLINGS 48.00-56.00; BUCKS 25.00-31.00.

GOATS: 340 HEAD. SMALL 15.00-32.00; MEDIUM 30.00-55.00; LARGE 56.00-90.00; BIG BILLIES UP TO 129.00.

HOGS, SHOWS AND BOARS: 79 HEAD. 210-250 LBS. 53.00-57.00; 250-260 LBS. 54.00-56.50; 260-270 LBS. 52.00-55.50; 270-300 LBS. 47.00-51.50.

LIGHT HOGS 140-180 LBS. 42.00-49.00; 180-210 LBS. 45.00-53.00.

SOWS 1.00 HIGHER. GOOD SOWS UNDER 400 LBS. 39.00-44.50, OVER 400 LBS. 45.00-51.00; CULL SOWS, ALL WEIGHTS, 38.00 AND DOWN.

BOARS: TREND 1.00 HIGHER. 180-210 LBS. 35.50-40.00; 210-260 LBS. 39.00-41.00; 260-300 LBS. 34.00-38.00; 300 LBS. AND OVER 35.00-39.00.

SALE EVERY MON. AT 2 P.M. AND EVERY THURS. AT 1 P.M. HAY AND STRAW EVERY MON. AND THURS. AT 11:30 A.M.

Aberdeen Sales Company, Inc.

Complete Auction & Appraisal Service
Churchville, Md.

Report Supplied by Auction
Wednesday, October 1, 1996

SLAUGHTER STEERS: MARKET 2.00 HIGHER. CHOICE 2-4 1100-1400 LBS. 70.00-73.00; SELECT & LOW CHOICE 1000-1500 LBS. 63.00-69.00; HOL. STEERS HI CHOICE & PRIME 1250-1400 LBS. 59.00-63.00; CHOICE 1200-1500 LBS. 55.75-59.00; SELECT, ALL WEIGHTS 46.00-53.00.

SLAUGHTER HEIFERS: MARKET 2.00 HIGHER. CHOICE & PRIME 950-1300 LBS. 69.00-72.00; SELECT ALL WEIGHTS 900-1400 LBS. 57.00-65.00.

COWS: MARKET 3.00 HIGHER. BRK. UT. & COMM. 2-4 BULK 38.00-42.00; HI DRESSING 42.00-45.00; CUTTER & BON. UT. 34.00-38.00; HI DRESSING 38.00-41.00; CANNER & CUTTERS 28.00-33.00; LOW DRESSING 25.00 AND DOWN.

BULLS: MARKET 1.00 HIGHER. ALL WEIGHTS 1100-1900 LBS. 38.00-53.00.

VEAL CALVES: MARKET 2.00 HIGHER. CHOICE AND PRIME 200-400 LBS. 65.00-82.00; HI GOOD AND LOW CHOICE ALL WEIGHTS 39.00-53.00.

FARM CALVES: MARKET 15.00 HIGHER. HOL. BULLS 100-125 LBS. 75.00-94.00; HOL. BULLS 85-95 LBS. 63.00-84.00; HOL. HEIFER CALVES 100-120 LBS. 120.00-182.00; SMALL FRAME 70-105 LBS. 45.00-115.00; SLAUGHTER CALVES ALL WEIGHTS 15.00-35.00.

FEEDER CATTLE: MARKET STEADY. BULLS & STEERS 400-900 LBS. 39.00-58.00; HEIFERS 300-700 LBS. 35.00-47.00.

LAMBS: MARKET STEADY.

CHOICE & PRIME 90-110 LBS. 76.00-89.00; LIGHTER LAMBS 65.00-93.00; EWES - HEAVY 24.00-32.00, LIGHT 31.00-43.00.

GOATS: MARKET STEADY. SMALL 20.00-30.00; MEDIUM 30.00-55.00; LARGE 70.00-110.00.

HOGS: MARKET 1.00 HIGHER. 210-250 LBS. 53.00-56.00; 255-300 LBS. 49.00-55.00; SOWS - HEAVY 46.00-52.00; SOWS - LIGHT 30.00-39.00; BOARS ALL WEIGHTS 30.00-36.00.

Shenandoah Valley Livestock

Harrisonburg, Va.
September 28, 1996

Report supplied by auction

STEERS 300-499 LBS. 40.00-58.00, 500-699 LBS. 42.00-61.00, 700-1000 LBS. 50.00-60.25; HEIFERS 300-499 LBS. 30.00-49.00, 500-699 LBS. 30.00-45.00, 700-1000 LBS. 45.50; BULLS 300-499 LBS. 30.00-45.00, 500-699 LBS. 28.00-43.00, 700-1000 LBS. 25.00-40.00.

HOLSTEIN STEERS: 3-499 26.00-30.00; 5-699 37.00; 7-1100 40.00.

STOCK COWS: BEEF 200.00-325.00; BABY CALVES 9.00-55.00; SLAUGHTER HEIFERS 45.50; SLAUGHTER COWS 25.00-35.00; SLAUGHTER BULLS 28.00-39.50.

SLAUGHTER LAMBS: CHOICE AND PRIME YIELD GRADE 1-3 BLUE O SPRING 75.50; GOOD AND FEW CHOICE YG#1-2 RED O SPRING 85.00.

FEEDER LAMBS MED. & LRGE 1&2 70-84 LBS. RED SH 81.00, 60-90 LBS. RED BK 83.00, 50-59 LBS. RED TL 80.00, BL TL 86.50.

SLAUGHTER EWES 22.00-40.00.

VEALS 41.00.

SLAUGHTER CALVES 35.00-40.00.

WHAT'S AHEAD FOR CORN & SOYBEAN

- We Deal In Futures And Options
- Our Only Business is Commodity Futures And Options
- In Allentown Area and Same Principals For Over 20 Years
- When Buying options, your risk is limited to the loss of the premium paid plus all transaction costs. Buying futures and options have inherent risks and should be done only with risk capital.

FOR INFORMATION...LITERATURE...
CHARTS...PLEASE CALL

(610) 366-7979 or 800-543-8939

LEHIGH VALLEY FUTURES INC.
Commerce Plaza, Suite 249, 5000 Tilghman Street,
Allentown, Pa 18104

The risk of loss in trading futures and options on futures can be substantial. Futures and options trading may not be suitable for everyone. You should carefully consider the risks in light of your financial condition in deciding whether to trade.

FOR SALE - MANURE

20-25 ton trailer loads
\$7 to \$9/per ton depending
on distance

VINTAGE SALES STABLES, INC.
Paradise, PA 17562
(610)458-5060 - (717)442-4181
L. Robert Frame, President

Leesport Farmer's Market, Inc.
Leesport, Pa (610) 926-1307

SPECIAL FEEDER CATTLE SALE

(Approximately 400 Head)
• Consignments Welcome

Refreshments Available
FRIDAY, OCT. 25, 1996
7:30 p.m. Bill Weist

HAY, STRAW & GRAIN SALE

Every Thursday
at 12 NOON

Vintage Sales Stables, Inc.
(Rt. 30, 10 miles east
of Lancaster
in Paradise, PA)

For info.
(717) 442-4181 bus.
(610) 458-8518 home



Extended
Thru
October 15th

Annual Jamesway Barn Cleaner Chain Sale!



When your barn cleaner needs new chain — whether flat link or Hook-Link type — we have the perfect replacements. Both links are totally forged of rugged, high carbon steel to reduce wear, extended working life. No wonder our chain has a 10 year warranty. Fits most barn cleaners.

Check your barn cleaner chain and call today for your fall needs!

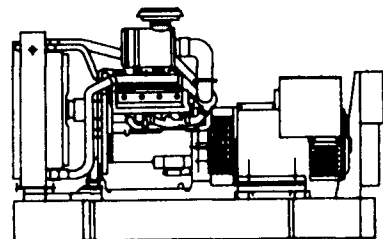


LAPP'S BARN EQUIPMENT

5935 OLD PHILADELPHIA PIKE, GAP, PA 17527
PHONE: 717-442-8134 • FAX 717-442-3112

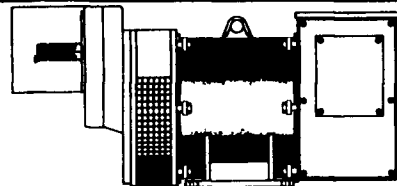
SALES & SERVICE

GENERATOR SYSTEMS 1-800-779-8809



New & Used 5 to 2500 KW
Diesel • Propane • Natural Gas

24 Hour Emergency Service
Sales - Installation
Maintenance Contracts • Rentals



10 To 150 KW 1800 RPM Brushless
Tractor Driven Generators

DYNA TECH[®] Ind.

Dynamic Technologies

DYNA-TECH INDUSTRIES

602 E. Evergreen Rd., Lebanon, PA 17042

717-274-8899 FAX 274-8934

Ask About Our Lightning & Surge Protection Units
Panel Mount • Plug-In • Electric Fence Protection

