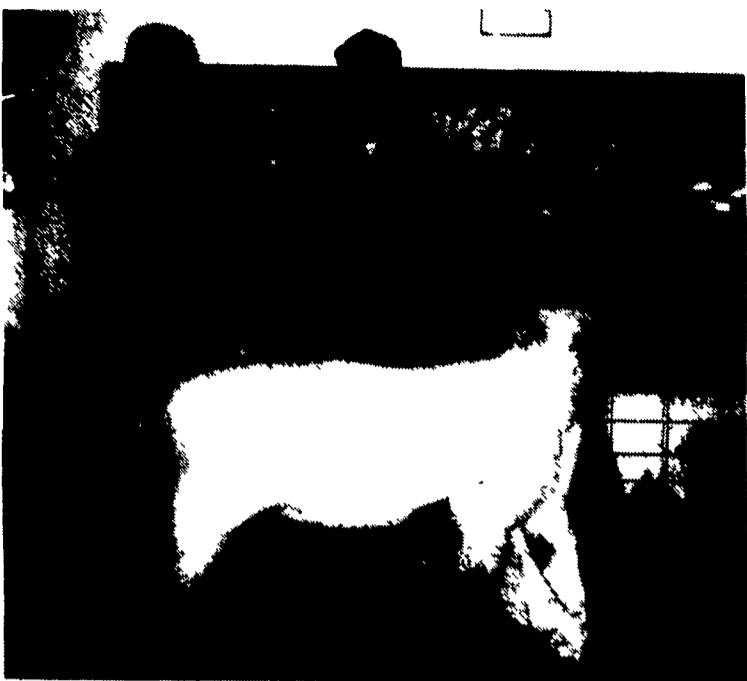


# Beaver County

(Continued from Page A36)



Hannah Etzler's champion Shropshire ewe was named supreme champion ewe. Shown, from left, are Tim Hall, judge and Lewis Melser, Jr.



Supreme champion ram honors were won by Tiffany Hoffman with her champion Suffolk ram. Tom Hall, judge, and Hoffman are shown.

## Public Auction Register

### OCTOBER

FRI. OCT. 4 - 5 PM & SAT. OCT. 5 - 9AM In Fulton Co. along Rt. 522, between Burnt Cabins & Ft. Littleton, 2 miles N. of Pa. Turnpike exit #13. Estate of Merrill Snyder. Steve Price & Earl Sunderland, aucts.

SAT. OCT. 5 - 9AM Farm machinery, lawn & garden equip, tools, coins, guns, vehicles. Held at 1434-E Deep Run Rd., Westminster, Md. Nevin E. Tasto, auct.

SAT. OCT. 5 - 9:30AM Annual Harrisburg Contractors constructin equip, truck tractor, dump truck & trailers auction. Grantville, Pa. 15 miles E of Harrisburg, just off I-81. Alex Lyon & Son.

SAT. OCT. 12 - 9AM Farm machinery, antiques, tools, horse tack. Held at 1529 Old Manchester Rd., Westminster, Md. midway between Rt. 27 & Rt. 482. Mr. & Mrs. Bill Hill, owners. Nevin E. Tasto, auct.

SAT. OCT. 12 - 9AM AT 15716 National Pike Rt. 40, Hagerstown, Md. 7 mile W. of Hagerstown, Md. Farm machinery & collectibles, antiques and collectibles, household, tools. Estate of Almata Mongan. C. Floyd Davis, aucts.

# Information Alliance Created Between Northeast DHIA and Dairylea Cooperative

ITHACA, N.Y. — Northeast DHIA and Dairylea Cooperative Inc. are pleased to announce an alliance that will create an information cooperative to provide farm management information services throughout the Northeast and Mid-Atlantic regions of the United States.

According to Nel Empet, Northeast DHIA General Manager, the new cooperative will enhance the information and laboratory services available to farmers, and, at the same time, result in financial and operational efficiencies in the delivery of these services.

"This new venture is a natural fit between two organizations that are dedicated to providing services that have a positive impact on farm businesses. We are very excited about the synergies that will be created through this alliance," said Empet. "As we enter the new century, farmers are going to rely more and more on quick and accurate information regarding their farm operations. Through the new cooperative, we will construct a leading-edge information system for agriculture that will best position farmers for the challenges and changes that lie ahead."

Commenting on the alliance,

Dairylea Chief Executive Officer Rick Smith said, "We are especially pleased that our two organizations will be working together to maximize resources, avoid duplication, and streamline common operating units."

The new cooperative will be overseen by a Board of Directors with representation from Dairylea and Northeast DHIA. Both organizations will continue to operate as separate entities, with farm management information and laboratory services combined into this information cooperative.

Northeast DHIA, based in Ithaca, NY, is a 3,800-member cooperative association, providing herd management and laboratory

services in the nine-state area of New York, Pennsylvania, New Jersey, Connecticut, Massachusetts, New Hampshire, Vermont, Rhode Island and Maine.

Dairylea Cooperative is a Syracuse-based, dairy farmer-owned agricultural cooperative with more than 2,600 member farms throughout the Northeast. It markets more than 4.5 billion pounds of milk annually and participates and is invested in a milk-marketing network stretching from Maine to Maryland to Ohio. Additionally, Dairylea provides insurances, financial services, livestock marketing and a variety of other farm service through various subsidiaries.

# got milk?

## PUBLIC SALE OCTOBER 12, 1996 9:00 AM

Located 15716 National Pike (Route 40) Hagerstown, MD 7 mile west of Hagerstown, MD. Watch for sale signs.

### FARM MACHINERY AND COLLECTIBLES

Hay elevator; McCormick Deering hammer mill; New Holland baler; 2 row corn planter; cultivators; loader to fit Ford tractor; two hole corn sheller; grain cleaner; forks and shovels; double shovel plow; grind stone; reel mower; double shovel wooden plow; grain cradle; mowing sythe; 3 cross cut saws; wooden wagon wheel; horse collars; single trees; buggy seat.

### ANTIQUES AND COLLECTIBLES

Lanterns; piano roll cabinet; picture frames; large mirror with old metal frame; wicker flower baskets; what-not shelves; misc. old toys; old rocking horse; toy baby cradle; tins; Raeo Lamp; Electric Raeo Lamp; 2 sewing baskets; floor lamp; mantle clock; mandolin; crocks; wooden high chair; old ammunition boxes; H.T. Shearer safe; lead pots and ladle; toy metal chest from Porter Chemical Co. of Hagerstown, MD; old lanterns; Treadle sewing machine; 10 gal. crock; glass front piano roll cabinet; old rocker; Leahr rocker with lion head carvings on arms; 1 and 2 gal. crock jugs; canning jars; blue jars; old baskets; 2 wooden ironing boards; griddle; 2 butchering kettles (cracked); other misc. butchering equip.; table model victrola; berry crates; 1/2 and 1-bushel baskets; mail sorting box; 4 violins and cases; cricket boot jack; depression glass; antique dishes.

### HOUSEHOLD

Handmade cedar chest with tray; wall mirror; magazine rack; misc. dishes; games and books; roasters; vanity with mirror; pans; silverware; clock parts; camera; several lamps; fan; old stove; Maytag washer; wall cupboard converted to gun cabinet; small cabinet; dressers; waterfall bedroom suit; stereo; oak stand with swing mirror; coffee and end tables; maple dining table and chairs; small table; small dresser with swinging mirror; Maytag washer and dryer.

### TOOLS

Misc. hand lawn tools; large pipe wrench; 4" vise; hand tools; wrenches; sockets; bench grinder; saws; levels; tool boxes; wooden carpenter tool boxes; hanging scales; tap and die set; plumbing tools; parts bins; craftsman riding mower (needs work) Merry tiller; Lawnboy riding mower; misc. auto parts; MTD 3 1/2 HP 22" cut mower; wheelbarrow; air compressor; lawn seeder; bolt cutters; metal cabinet; battery charger.

ESTATE OF:  
**ALMETA MONGAN**  
15716 NATIONAL PIKE  
HAGERSTOWN, MD

AUCTIONEER: C. FLOYD DAVIS  
CLERKS: DRURY AND SMITH

PLEASE CLIP THIS AD; WILL ONLY APPEAR ONCE.

TERMS: CASH, NOTHING REMOVED UNTIL SETTLED FOR; NOT RESPONSIBLE FOR ACCIDENTS; NUMBER SYSTEM; ID REQUIRED

LUNCH RIGHTS RESERVED

## PUBLIC SALE OF WOODWORKING POWER SHOP EQUIPMENT HAND TOOLS - HARD- WARE - RIDING MOWER - TRAILER - OLD RADIOS MON. EVE., OCT. 21, 1996 AT 5:00 P.M.

Loc. 851 Little Britain Road, Quarryville, Lancaster Co., PA

(Dir.: Take Rt. 222 south of Quarryville about 4 miles & turn left onto Little Britain Rd. to sale)

Food Served

Sale by:

**Henry R. Bushong Estate**

Howard E. Shaub, Inc. 717-464-3541  
Auctioneer (AU-000831-L)

## SPECIAL FEEDER CATTLE SALE 500—HEAD—500 SAT., OCT. 19, 1996 12:00 NOON

Sale to be held at Aberdeen Sales Company, Inc. Livestock Auction Market, located in Churchville, Harford County, Maryland. 4 miles off of I-95, Exit #85.

This sale will consist of local cattle from surrounding counties. There will be no shipped cattle in this sale. Most cattle will be weighing 500 to 900 lbs. Cattle will be sorted and graded and sold in lots to suit all buyers.

Cattle will be accepted 24 hours prior to Sale and will have feed and water.

Cattle weighing 700 lbs. to 900 lbs. are in very strong demand, with corn prices getting lower. If you have cattle to sell or consign, please give us a call.

Terms: Cash or Approved Check  
Restaurant will be open 10:00 AM

Aberdeen Sales Company, Inc.  
Livestock Auction Market  
Sales every Wednesday  
P.O. Box 250; Churchville, Md. 21028

Phone: 410-836-7590

410-734-7596

Night: 410-734-7105

Order Buying - Hauling - Consignments Welcome

**WITMAN AUCTIONEERS, INC.**

**Tyson Foods, Inc.**  
63.88 Acre Farm  
East Earl Twp.  
New Holland, PA

Zoned I, Industrial District, Ru, Rural District.  
**WED., NOV. 13, 1996 1 P.M.**  
Located at Orlan Road, New Holland, PA next to Tyson Foods, Inc. & Zausner foods Corp.  
Directions: Take Rt. 23 to Custer Ave. to Orlan Road.  
**OPEN HOUSE DATES:** Sat. Oct. 19, Sat. Oct. 26 & Sat. Nov. 2, 12-3. For additional apts. call Auction Firm, 665-5735.

**REAL ESTATE FEATURES:** 63.88 Acre Farm with large amt. of road frontage, 2 1/2 story frame w/vinyl siding house. 5BRs, kitchen, DR, utility rms, full bath, 45x72 Stone & frame bank barn. 32x68 frame tobacco shed. Other out bldgs include chicken house, small shed & garage. For complete brochure contact auciton firm for brochure #13.  
**TERMS:** 10% down, balance at settlement.  
**Atty: Blakinger, Byler & Thomas Dan Blakinger**  
717-299-1100

**AUCTION FOR:  
TYSON FOODS, INC.**

**Witman Auctioneers Inc.**  
Auctioneers, Appraisers and Liquidators  
Jay M. Witman, AU001127-L  
Luke R. Witman  
657 Fruitville Pike  
Manheim, PA 17545  
(717) 665-5735