

# LANCASTER COUNTY LIVESTOCK MARKET AUCTION

## Lancaster Livestock

NEW HOLLAND, PA  
OCTOBER 1, 1996

	Cattle	Calves	Hogs	Sheep	Goats
MONDAY'S AUCTION	711	77	228	797	989
LAST WEEK	582	78	326	744	688
LAST YEAR	840	46	250	347	106

**CATTLE:** Slaughter steers steady, instances 50 lower; slaughter heifers fully steady; cows weak to 1.00 lower; bullocks steady; bulls unevenly steady. Supply included 59 percent slaughter steers, 10 percent slaughter heifers, 18 percent cows, and 13 percent bulls.

**SLAUGHTER STEERS:** Choice 2-3 few 4 1100-1400 lb 67.50-70.00, few 70.00-71.00; Choice and Prime 2-4 1200-1400 lb 71.00-73.50, few 1320-1360 lb 73.75-74.35; Select and Low Choice 2-3 1050-1400 lb 63.00-67.00.

**HOLSTEINS:** High Choice and Prime 2-3 1250-1575 lb 60.75-63.35; Choice 2-3 1200-1550 lb 55.50-60.00; few Select 1-2 1100-1400 lb 53.00-55.50.

**SLAUGHTER HEIFERS:** Choice 2-3 990-1300 lb 63.25-66.00; few Choice 2 1075-1250 lb 66.00-66.50; Select 1-3 940-1200 lb 56.00-62.00.

**COWS:** LOW DRESSING BULK HIGH DRESSING Breaking Utility and Commercial 2-3 37.00-39.00 39.50-41.00 Commercial 2-4 28.00-34.00 Cutter and Boning Utility 1-3 31.50-34.00 34.00-37.00 Canner and low Cutter 1-2 22.00-26.00 26.00-29.00

**BULLOCKS:** Select 1-2 960-1200 lb 45.00-58.00; couple Choice 2-3 1100-1300 lb 48.75-51.00.

**BULLS:** Yield grade 1 1250-1900 lb 40.00-46.50, few 46.50-48.75; Yield grade 2 1000-1600 lb 37.00-40.00.

**CALVES:** Vealers steady; slaughter calves fully steady. Demand fair for Holstein bulls to return to farm.

**VEALERS:** High Good and low Choice 140-250 lb 50.00-65.00, 80-110 lb 15.00-30.00.

**SLAUGHTER CALVES:** Good and Choice 250-650 lb 40.00-50.00.

**RETURNED TO FARM:** Few 85-110 lb Holstein bulls 30.00-45.00.

**BARROWS AND GILTS:** 1.00-1.50 higher. US 1-2 220-250 lbs 59.00-60.00 US 1-3 220-260 lbs 57.50-58.50

**SOWS:** Steady. US 1-3 300-450 lbs 44.00-46.00 450-600 lbs 50.00-52.00

**BOARS:** All Weights 40.00-42.00

**SHEEP:** Slaughter lambs and slaughter ewes steady. Supply includes an estimated 85 percent slaughter lambs, with the balance slaughter ewes.

**SLAUGHTER LAMBS:** Choice 1-3 40-70 lb 95.00-110.00, 70-80 lb 90.00-105.00, 80-105 lb 90.00-95.00, 105-125 lb 80.00-90.00.

## Vintage Livestock

PARADISE, PA  
OCTOBER 1, 1996

	Cattle	Calves	Sheep	Goats
TODAY	617	857	16	3
LAST TUESDAY	522	747	17	0
LAST YEAR	610	985	18	0

**CATTLE... USDA ...** Supply included 31% slaughter steers and 62% cows ...slaughter steers fully steady, instances 1.00 higher on Choice, sl. heifers not fully tested, cows firm to 1.00 higher, bullocks and bulls scarce.

**SLAUGHTER STEERS:** High Choice and Prime 2-4 1200/1475 lbs. 72.75-74.35, Choice and Prime 2-3 1125/1480 lbs. 71.50-74.25, three head 76.00, Choice 2-3 few 4 1100/1480 lbs. 68.50-72.00, few 72.00-73.00, Select and Low Choice 2-3 1075/1400 lbs. 64.50-68.50.

**HOLSTEINS:** one lot Select and Low Choice 2-3 1260 lbs. 53.00.

**COWS:** Breaking Utility and Commercial 2-3 bulk 35.00-40.00, high dressing 40.00-44.00, Cutter and Boning Utility 1-3 low dressing 32.00-36.00, bulk 36.00-41.00, Canner and Low Cutter 1-2 low dressing 22.50-26.50, bulk 26.75-31.00.

**BULLS:** couple Yield Grade No. 1 1150/2130 lbs. 37.25-38.75.

**CALVES...Vealers** fully steady. Supply included 75 in graded sale of which 71% sold to return to farm.

**VEALERS:** Choice 160/250 lbs. 60.00-74.00, High Good and Low Choice 150/370 lbs. 42.00-57.00, 80/110 lbs. 20.00-27.00, Standard and Low Good 65/85 lbs. 12.00-20.00.

**RETURNED TO FARM:** 20 head 120/125 lbs. Holstein bulls 77.00-85.00, 70 head 110/115 lbs. 88.00-92.00, 125 head 100/105 lbs. 71.00-77.00, 65 head 95 lbs. 60.00, 60 head 90 lbs. 34.00-42.00 and 35 head 85 lbs. 24.00, 100 head small frame 90/115 lbs. 22.00-33.00; 35 head 90/105 lbs. Holstein heifers 172.00-192.00, 20 head 80/85 lbs. 80.00 and 12 head 70/75 lbs. 36.00, 10 head small frame 90/95 lbs. 142.00 and 10 head 80/85 lbs. 42.00.

**SHEEP...SLAUGHTER LAMBS:** few Good and Choice 1-2 40/80 lbs. 82.00-102.00, couple 40/50 lbs. 130.00-132.00.

**GOATS...INSUFFICIENT VOLUME FOR A MARKET TEST!**

**SLAUGHTER EWES:** Choice 1-3 50.00-60.00; Utility and Good 1-2 35.00-50.00, 2-4 25.00-35.00.

**GOATS:** All goats sold by the head. Billies: Medium 70.00-95.00; few Large 95.00-120.00. Nannies: Medium and Large 40.00-65.00. Kids: Choice 45.00-60.00; Good 30.00-45.00; Utility 18.00-25.00.

## Lancaster Livestock Auction

Wednesday's market report has been discontinued until further notice because of insubstantial receipts.

### VA Feeder Sales

MARSHALL, VA  
OCTOBER 1, 1996

**Feeder Cattle 774 head Steers 236 head Medium and Large 1 Small 1 Medium and Large 2 200-300 50.00 - 300-400 50.00 - 52.50 39.00 40.00 - 49.00 400-500 40.00 - 55.00 33.50 44.00 - 49.50 500-600 47.00 - 58.00 45.00 - 45.50 45.00 - 53.00 600-700 47.00 - 60.00 48.00 - 53.50 45.50 - 52.00 700-800 49.50 - 58.25 45.00 48.50 - 56.75 800-900 53.00 - -**

HOLLINS, VA  
SEPTEMBER 30, 1996

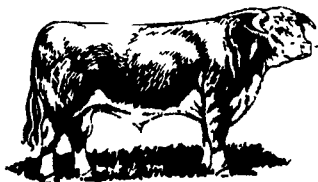
**Feeder Cattle 586 head Steers 258 head Medium and Large 1 Small 1 Medium and Large 2 300-400 50.00 - 55.00 - 45.00 - 51.00 400-500 53.00 - 60.00 43.00 - 47.00 46.00 - 54.00 500-600 52.00 - 60.00 43.00 - 46.00 45.00 - 53.00 600-700 52.00 - 59.50 42.00 - 46.00 45.00 - 50.00 700-800 54.00 - 56.00 - 800-900 50.00 - 53.00 - 900-1000 50.00 - 53.50 - -**

LYNCHBURG, VA  
SEPTEMBER 30, 1996

**Feeder Cattle 870 head Steers 292 head Medium and Large 1 Small 1 Medium and Large 2 300-400 48.00 - 400-500 56.00 - 63.00 35.00 - 45.00 50.50 - 54.50 500-600 53.00 - 58.00 - 42.00 - 56.00 600-700 48.00 - 57.50 35.00 - 43.00 49.00 - 53.75 700-800 56.50 - 57.50 - 45.50 - 55.00 800-900 55.00 - 56.00 - -**

JONESVILLE, VA  
OCTOBER 1, 1996

**Steers Medium and Large 1 Small 1 Medium and Large 2 300-400 55.50 - 61.00 43.00 - 45.00 45.00 - 52.50 400-500 60.00 - 66.00 43.00 - 45.00 50.00 - 57.50 500-600 54.00 - 60.25 43.50 - 45.50 53.00 - 56.00 600-700 51.00 - 56.00 - 51.00 700-800 57.00 - -**



## New Holland Livestock

NEW HOLLAND, PA  
OCTOBER 3, 1996

	Cattle	Calves	Sheep	Goats
TODAY	1181	569	168	115
LAST THURSDAY	993	623	143	138
LAST YEAR	1208	477	170	78

**CATTLE:** Slaughter steers fully steady; slaughter heifers scarce; cows fully steady; bullocks fully steady; small supply bulls steady. Supply included 40 percent slaughter steers and 2 percent cows.

**SLAUGHTER STEERS:** High Choice and Prime 2-3 1175-1450 lb 72.50-75.00, few 75.25-76.00; Choice 2-3 few 4 1050-1425 lb 68.50-71.50, few 71.50-72.50; Select and low Choice 2-3 1100-1375 lb 63.50-68.00; Select 1-2 1100-1300 lb 58.00-61.50.

**HOLSTEINS:** Couple lots High Choice and Prime 203 1225-1520 lb 61.00-62.50; Choice 2-3 1250-1500 lb 57.00-58.00; couple Select 1-2 1135-1425 lb 52.50-55.00.

**SLAUGHTER HEIFERS:** Few Choice 2-3 1000-1150 lb 67.00-67.75.

**COWS:** LOW DRESSING BULK HIGH DRESSING Breaking Utility and Commercial 2-3 38.00-41.00 41.00-43.50 Cutter and Boning Utility 1-3 31.00-35.00 35.00-38.50 38.50-41.50 Canner and low Cutter 1-2 23.00-27.00 27.00-31.00

**BULLOCKS:** Few Choice 2-3 1000-1350 lb 54.50-56.50; Select 1-2 1000-1300 lb 45.00-52.00.

**BULLS:** Yield grade 1 1300-1900 lb 39.00-41.50; Yield grade 2 1000-1400 lb 36.00-39.00.

**CALVES:** Vealers and slaughter calves steady. Demand fair for Holstein bulls and heifers to return to farm.

**VEALERS:** Few Choice 200-300 lb 64.00-81.00; high Good and low Choice 135-275 lb 40.00-60.00, 80-110 lb 20.00-31.00; Standard and low Good 55-85 lb 10.00-20.00.

**SLAUGHTER CALVES:** Good and Choice 250-425 lb 30.00-42.00.

**RETURNED TO FARM:** Bulk 90-120 lb Holstein bulls 70.00-88.00, few 90.00-94.00, 80-85 lb 55.00-75.00; small frame 90-115 lb 50.00-70.00, 80-90 lb 30.00-50.00; few 90-115 lb Holstein heifers 120.00-160.00, few small frame 85-110 lb 80.00-110.00.

**SHEEP:** Slaughter lambs and slaughter steady. Supply included an estimated 90 percent slaughter lambs, with the balance slaughter ewes.

**SLAUGHTER LAMBS:** Choice 1-3 65-105 lb 85.00-92.00.

**NEW CROP LAMBS:** Few Choice 35-60 lb 120.00-152.00.

**SLAUGHTER EWES:** Utility and Good 1-3 20.00-40.00, few Choice 40.00-55.00.

## Lancaster County Weekly

NEW HOLLAND, PA  
OCTOBER 4, 1996

	Cattle	Calves
THIS WEEK	2650	1525
LAST WEEK	2097	1448
LAST YEAR	2856	1543

**CATTLE:** Slaughter steers mostly 1.00 higher; slaughter heifers fully steady; cows 1.00-2.00 higher; bullocks fully steady; bulls steady. Supply included 41 percent slaughter steers, 5 percent slaughter heifers, 28 percent cows, 5 percent bulls, with the balance feeders.

**SLAUGHTER STEERS:** High Choice and Prime 2-4 1175-1475 lb 72.50-75.00, few 75.25-76.00; Choice 2-3 few 4 1050-1480 lb 68.50-72.00, few 72.00-73.00; Select and low Choice 2-3 1075-1400 lb 63.50-68.50; Select 1-2 1100-1300 lb 58.00-61.50.

**HOLSTEINS:** High Choice and Prime 2-3 1225-1575 lb 60.75-63.35; Choice 2-3 1200-1550 lb 55.50-60.00; Select 1-2 1100-1425 lb 52.50-55.50.

**SLAUGHTER HEIFERS:** Choice 2-3 990-1300 lb 63.25-66.00; few Choice 2 1000-1250 lb 66.00-67.75; Select 1-3 940-1200 lb 56.00-60.00.

**COWS:** LOW DRESSING BULK HIGH DRESSING Breaking Utility and Commercial 2-3 37.00-41.00 41.00-44.00 Commercial 2-4 28.00-34.00 Cutter and Boning Utility 1-3 31.00-35.00 35.00-39.00 39.00-41.50 Canner and low Cutter 1-2 22.00-27.00 27.00-31.00

**BULLOCKS:** Choice 2-3 1000-1350 lb 51.00-56.50; Select 1-2 960-1300 lb 45.00-52.00.

**BULLS:** Yield grade 1 1250-1900 lb 39.00-40.50, few 46.50-48.75; Yield grade 2 1000-1600 lb 36.00-40.00.

**CALVES:** Vealers and slaughter calves fully steady. Demand fair for Holstein bulls and heifers to return to farm.

**VEALERS:** Choice 160-300 lb 60.00-81.00; high Good and low Choice 135-370 lb 40.00-60.00, 80-110 lb 20.00-31.00; Standard and low Good 55-85 lb 10.00-20.00.

**SLAUGHTER CALVES:** Good and Choice 250-600 lb 30.00-45.00.

**RETURNED TO FARM:** Bulk 90-120 lb Holstein bulls 70.00-94.00, 80-85 lb 24.00-75.00; small frame 80-110 lb 22.00-50.00, few 50.00-70.00. Bulk 90-105 lb Holstein heifers 160.00-192.00, 20 head 80-85 lb 80.00; small frame 85-110 lb 80.00-142.00.

**GOATS:** All goats sold by the head. Billies: Medium 80.00-100.00. Nannies: Medium and Large 45.00-70.00. Yearlings: Good and Choice 45.00-65.00. Kids: Choice 30.00-45.00; Good 20.00-30.00.

### QUALITY FEEDER CATTLE

Financing Available

- \* Fixed Interest Rates • Interest Due when Cattle Are Sold
- No Monthly Payments

### SCARFF BROS. INC.

Cattle Dealers • Licensed & Bonded  
2300 Fallston Road • Fallston MD 21047

Lance N. Scarff  
Farm (410) 877-0370  
Fax (410) 877-7802

C. Howard Scarff, II  
Home (717) 445-4355  
Fax (717) 445-7237  
Mobile (717) 940-2633

W. Conly Scarff  
Home (410) 838-5883  
Mobile (410) 790-2650

Contract Feeding Programs • Marketing of Finished Cattle • Dairy Heifers

### B&R CATTLE CO

RD 1, Marietta, PA  
17547

Office Phone:  
(717)653-8164

Specializing in  
Stockers &  
Feeders

JOHN BOWMAN  
(717)653-5728

RON RANCK  
(717)656-9849

### KIRKWOOD HAY AUCTION

Hay, Straw and  
Grain Auction  
EVERY TUESDAY  
11:00

Located Rt. 472 5 miles  
south of Quarryville or 6 miles  
north of Oxford corner of  
Rt. 472 and Noble Road.

Lloyd H. Kreider,  
Auctioneer  
AU-000513L  
No out of state checks

### HAY, STRAW, & CORN

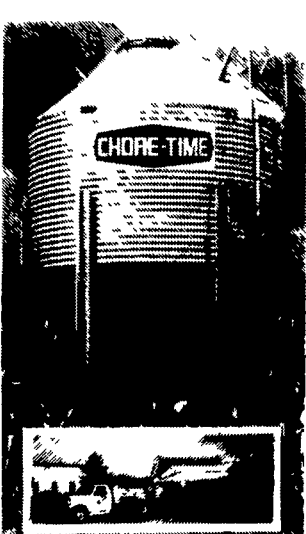
— SALE —

Sale Starts  
Every Friday at 10 AM

### GREEN DRAGON MARKET & AUCTION

955 N. State St.  
Ephrata, Pa. (717) 738-1117  
1 mile North of Ephrata on N. State St.  
Out of State Buyers-Cash or Certified Check Only

## Get more capacity and better service from Chore-Time's New Next Generation bin



High Capacity 40" roof (left) allows more storage and stays cleaner than conventional 30" roof (right)



Hydro-Shield™ Weather Guard prevents water from running down hopper



ACCESS PLUS™ permits easy clean out of the bin from the ground.

### Contracts available call for information

- Breeder
- Pullets
- Turkey
- Hog

Call for our free brochure  
"What is contract production?"

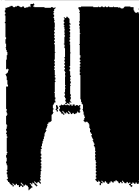
Replace your bulbs and save electricity with  
SCREW IN FLUORESCENT LIGHTS

5-7-9 13  
Watts 5.49 ea. Watts 5.79 ea.

Light Bulbs 25 to 100 Watts 34¢ Ea.  
Brass Base - 5000 Hrs.

In Stock 36" & 48" Wide Kraft Paper

Authorized Distributors  
Northeast Agri Systems, Inc.  
Flyway Business Park  
139A West Airport Road  
Lititz, PA 17543  
Ph (717) 569 2702  
1-800-673-2580



## VINTAGE SALES STABLES, INC.

### SALE TUESDAYS

10:30 A.M.  
SLAUGHTER CATTLE AUCTION-  
STEERS, BULLS, HEIFERS,  
COWS, FEEDER CATTLE

6:30 P.M.  
CALVES, SHEEP, GOATS  
•GET CALVES IN EARLY-  
OUR STATE GRADER  
STARTS AT 10:30 A.M.

Feeder Stocker Sale  
Fri. Oct. 11 @ 1PM

### FOR MORE INFORMATION CONTACT

L. ROBERT FRAME, SR., PRESIDENT  
BUS (717) 442-4181 BUS (717) 768-8204  
HOME (215) 458-8518  
IRWIN MARTIN, FIELD REP.  
(717) 733-7434  
KENNETH E. HERSHEY, FIELD REP.  
(717) 442-4874</