

Leola Produce Auction

Leola, PA
October 1, 1996
Report Supplied by Auction
APPLES: RED, YELLOW DELICIOUS 2.75-4.75; GALA 6.25-8.25, OTHER VARIETIES 2.50-4.50, ALL 1/2 BU.
BEANS: GREEN AND YELLOW 15.00-18.50 BU.; LIMA 15.00-28.00 BU.
BROCCOLI: .37-.62 HEAD, 4.00-7.25 12-16 CT.
CABBAGE: GREEN 3.75-4.75 CRATE, 40-.58 HEAD.
CAULIFLOWER: .45-.75 HEAD.
CUCUMBERS: #1 7.50-12.25 1 1/9 BU., SELECT 3.50-7.25; PICKLING 5.00-14.00 1/2 BU.
EGGPLANT: 4.75-7.50 1 1/9 BU.
NECTARINES: 6.00-7.75 1/2 BU.
PEARS: BARTLETT 4.75-6.75 1/2 BU.; SECKEL 6.00-8.50 1/2 BU.
PEPPERS: GREEN SM. TO MED. 3.50-5.50, LRGE. TO EX. LRGE. 5.75-9.50, BOTH 1 1/9 BU.; RED SM. TO MED. 4.50-7.75, LARGE TO EX. LARGE 8.00-11.00 BU.; SUNTAN 3.75-7.75 BU.; HOT 6.75-7.75 1/2 BU.
POTATOES: RED AND WHITE 4.00-6.50 US#1 50 LBS.
PUMPKINS: NECK SM. TO MED. .50-.75, LARGE TO EX. LARGE .80-1.50 EACH.
SPINACH: 3.75-9.50 1 1/9 BU.
SQUASH: SMALL PATTYPAN 8.00-14.00 10 LBS.; ACORN, BUTTERNUT, SPAGHETTI 3.25-6.50 1 1/9 BU.
SWEET CORN: 1.25-2.75 DOZEN.
SWEET POTATOES: 4.00-6.75 1/2 BU.
TOMATOES: SM. TO MED. 7.00-11.00, LRGE. TO EX. LRGE. 11.50-15.00, BOTH 25 LBS.; CHERRY 5.00-8.50 12 PINT FLAT; PLUM 5.00-6.50 25 LBS.
TURNIPS: 4.75-6.75 25 LB. POLYBAG.
ZUCCHINI: YELLOW AND GREEN SM TO MED. 9.00-14.00 1/2 BU.; LARGE TO EXTRA LARGE: 6.00-8.50 1/2 BU.
ORNAMENTALS: FACE PUMPKINS 1.50-2.75 SM. TO MED., 3.00-4.50 LARGE TO EX. LRGE.; PRIZE WINNERS AND BIG MACS SM. TO MED. 3.00-5.75, LARGE TO EX. LRGE. 6.00-13.50; BABY PAMS OR OZ .45-.65 EACH; JACK-BE-LITTLES 4.75-6.25 1/2 BU.; GOURDS 2.50-4.75 1/2 BU.; GOOSE GOURDS OR SNAKE 1.00-2.50 EACH; INDIAN CORN .65-1.50 BUNCH, FINGERS & STRAWBERRY CORN .40-.65 BUNCH.
FLOWERS: MUMS 1.35-2.00 EACH.
FLOWERING KALE AND CABBAGE: 1.00-1.45 EACH.
SALE DAYS MONDAY, TUESDAY, THURSDAY AND FRIDAY AT 9 A.M. WED. IS ORNAMENTAL CRAFT SALE AT 9 A.M.

Farmers Produce Auction

MOUNT HOPE, OHIO
October 1, 1996
Market supplied by auction.
APPLES: 10.00-12.00.
BEANS: GREEN 8.00-17.00 BU.; LIMA 16.00-23.00 BU.
BROCCOLI: 5.50-7.00 BU.
CABBAGE: GREEN 6.50-8.50 50 LBS.
CANTALOPES: .10-.40.
CAULIFLOWER: .90-1.20.
CUCUMBERS: 3.50-6.00 24 CT., 11.00-12.00 72 CT.
DRIED FLOWERS: 30.00.
GRAPES: 7.00-7.25 PECK.
GROUND CHERRIES: .91.
ORNAMENTALS: GOURDS 1.00-2.00; INDIAN CORN .50-1.00; INDIAN POPCORN 35-45.
PEPPERS: GREEN 2.50-5.50 BU.; RED 7.50-8.50 BU.; SUNTAN 2.00-4.00 BU.; HOT 2.00-5.00 1/2 BU.
PICKLES: 7.00-9.50 1/2 BU.
POTATOES: 1.00-1.50 10 LBS., .50-1.00 5 LBS.; 7.00-9.50 50 LBS.
ORNAMENTALS: PUMPKINS: .25-3.50; PIE .60-.70; PAINTED 7.00; JACK-BE-LITTLES 3.00-5.50; BABY BOOS 3.00-6.50 1/2 BU.; CORN SHOCKS 17.50; JBL CANDLES 2.25-2.50.
SQUASH: ACORN 4.00-7.00; BUTTERNUT 7.00-7.50; BUTTERNUT 2.50-6.50, ALL BY THE BU.; BLUE HUBBARD 1.00-1.25 EA.; SWEET DUMPLING 2.00-4.50, SPAGHETTI 3.00-4.00, BOTH BY THE BU.; ZUCCHINI 10.00-12.00 1/2 BU.; AMBER CUP 10.00-11.00.
PUMPKINS: .25-3.50; PIE .60-.70.
SWEET CORN: 1.00-1.90 DOZ.
SWEET POTATOES: 4.00-7.50 PECK.
TOMATOES: 2.00-6.25 10 LBS.; 4.00-12.50 20 LBS.; YELLOW 3.00 16 LBS.
WATERMELON: .25-1.60 EACH.
MUMS: .25-1.85 EACH.
CORN SHOCKS: 17.50.
SALE TUES., THURS., FRI.

22-30.
PEPPERS: GREEN 2.00-4.00; RED 4.00-6.00 BU.
POTATOES: 4.50-5.00 50 LBS.
PUMPKINS: NECK .90-1.40 EACH.
SWEET CORN: .85-1.40 WHITE DOZ.
SWEET POTATOES: 6.00 1/2 DOZ.
TOMATOES: 4.50-9.00 25 LBS.
NEXT WEEK'S SALE DAYS TUES., THURS., FRI. AT 10 A.M.

The Windmill Produce Auction

Penn Yan, N.Y.
September 25 and 27, 1996
Report Supplied by Auction
APPLES: 6.00-7.00 BU.
BEANS: GREEN AND YELLOW 3.50-5.75 BU.
CABBAGE: .45-.60 HEAD.
CANTALOPES: .60-1.10 EACH.
CUCUMBERS: 3.00-4.50 1/2 BU.
EGGPLANT: 3.00-4.00 1/2 BU.
GOURDS: 1.00-2.25 BU.; JACK-BE-LITTLES 1.00-3.50 BU.
GRAPES: 1.25-1.70 2 QTS.
INDIAN CORN: .50-1.20 BUNCH.
PEACHES: 5.50-9.00 1/2 BU.
PEARS: 6.75-7.50 BU.
PEPPERS: GREEN 1.50-4.00 1/2 BU.; RED 1.50-3.75 1/2 BU.
POTATOES: 1.10-1.25 10 LBS., 6.00-7.50 50 LBS.
PUMPKINS: SM. .25-.45 EACH.; MED. .25-.75 EA.; LARGE .75-1.75 EACH.
SQUASH: BUTTERNUT, BUTTERNUT, ACORN 35-.50 EACH; HUBBARD .75-2.10 EACH; OTHER .10-.40 EACH.
SWEET CORN: .50-1.10 DOZ.
TOMATOES: 1.75-3.00 25 LBS.; ROMA PASTE 2.00-3.00 25 LBS.
WATERMELON: RED .10-.40 EACH; YELLOW .03-.15 EACH.
MUMS: 1.75-4.25 EACH.
WED. AND FRI. ACUTIONS UNTIL OCT. 25, 10 A.M. HAY AUCTION 9 A.M. FRIDAY ONLY.

NONE; CULLS, PRICES 5.00 HIGHER. 85-110 LBS. 20.00-30.00; 50-80 LBS. 14.00-24.00.
FARM CALVES: 5.00-10.00 HIGHER. #1 95-120 LBS. 60.00-81.00, FEW TO 88.00; #2 90-110 LBS. 35.00-55.00; HOLSTEIN HEIFERS FEW GOOD 85 LBS. TO 132.00; BEEF X HEIFERS TO 36.00.
BUTCHER HOGS: 30 HEAD, 2.00 HIGHER. US#1-2 240-260 LBS. 57.00; 14 HEAD 270-275 LBS. AT 55.00; #1&3 220-260 LBS. 55.00-56.25.
SOWS: 20 HEAD. 300-500 LBS. 40.00-44.00; 500-700 LBS. 47.00-50.00.
BOARS: 475 LBS. 40.50.
STOCK CATTLE: 222 HEAD. LIGHT WEIGHTS STEADY.
STEBERS MEDIUM AND LARGE FRAME 300-600 LBS. 38.00-49.00; 600-800 LBS. 42.00-51.00; 800-1000 LBS. 45.00-57.00; SMALL FRAME AND DAIRY X 30.00-40.00.
HEIFERS: MEDIUM AND LARGE FRAME 300-500 LBS. 30.00-39.00; 500-700 LBS. 37.00-49.00; 700-950 LBS. 40.00-50.00.
BULLS: 300-500 LBS. 35.00-46.00; 500-800 LBS. 33.00-42.00.
LAMBS: 73 HEAD. CHOICE 90-120 LBS. 76.00-87.00; 70-90 LBS. 75.00-97.00; 40-65 LBS. 88.00-120.00; FEW 130-140 LBS. 73.00-85.00; 150-175 LBS. TO 59.00.
SHEEP: 35 HEAD. LIGHT WEIGHTS 35.00-60.00; HEAVY 20.00-40.00.
GOATS: 42 HEAD. LARGE BILLIES 85.00-120.00; NANNIES 57.00-75.00; MEDIUM 40.00-60.00; FEW TO 73.00; SMALL 15.00-35.00.
PIGS AND SHOATS: 230 HEAD IN GRADED SALE, STRONG DEMAND. #1 17 HEAD 17-30 LBS. 72.00-95.00; 33 HEAD 30-45 LBS. 82.00-90.00; 57 HEAD 50-57 LBS. 92.00-97.00; 17 HEAD 60-70 LBS. 83.00; 12 HEAD 82 LBS. 75.00-77.00; #1&2 42 HEAD 20-45 LBS. 65.00-75.00; 20 HEAD 50-70 LBS. 67.00-79.00; #2&3 20-40 LBS. 35.00-50.00.
NEXT WEEK, OCT. 8: SPECIAL FEEDER CATTLE SALE, 7:30 P.M.

VEAL CALVES: 201 HEAD. CHOICE 1 255 LB. AT 59.00; GOOD 1 300 LB. AT 47.00; CULLS, PRICES HIGHER. 85-110 LBS. 20.00-28.00; 50-80 LBS. 15.00-23.00.
FARM CALVES: HOLSTEIN BULLS 10.00-15.00 HIGHER. #1 95-120 LBS. 60.00-79.00; #2 40.00-58.00; 80-90 LBS. 25.00-45.00; HOLSTEIN HEIFERS, GOOD DEMAND. #1 90-120 LBS. 145.00-165.00; #2 75-95 LBS. 90.00-125.00; BEEF X BULLS AND HEIFERS 25.00-36.00.
BUTCHER HOGS: 35 HEAD, 1.00 HIGHER. US#1-2 240-260 LBS. TO 56.00; #1&3 225-260 LBS. TO 55.50; FEW 275 LBS. TO 53.00.
STOCK CATTLE: STEERS, NO GOOD LIGHT WEIGHTS. FEW MED. 700-900 LBS. 48.50; HOL 800-1050 LBS. 34.00-36.00.
HEIFERS: 500-700 LBS. 25.00-39.00; 700-900 LBS. 35.00-44.00.
BULLS: 300-600 LBS. TO 45.00.
LAMBS: 1 CHOICE 120 LBS. TO 86.00; 2 CHOICE 45 LBS. AT 109.00.
SHEEP: LIGHT WEIGHTS 39.00-41.00.
GOATS: LARGE BILLIES 75.00-108.00; LARGE NANNIES 40.00-65.00; MED FLESHY 35.00-50.00.
PIGS AND SHOATS: BY THE HEAD, 10 HEAD 35-50 LBS. 18.00-25.00.
SOWS: 450-525 LBS. TO 46.50.
BOARS: 550 LBS. TO 39.00.
HATFIELD QUALITY MEATS...57.25, PLUS BONUS ON QUALITY HOGS. BUYING STATION HELD EVERY TUES. AT FOUR STATES.

New Holland Dairy

New Holland Sales Stables
Wednesday, October 2, 1996
Report supplied by auction
DAIRY COWS 138, HEIFERS 82, 4 BULLS. MARKET STEADY.
LOCAL FRESH 410.00-1225.00
FRESH HEIFERS 675.00-1450.00.
LOCAL SPRINGERS 875.00-1025.00.
UPSTATE LOADS FRESH 950.00-1500.00.
BETTER FRESH COWS 1325.00-1460.00.
LOAD OF CANADIAN SPRINGERS 725.00-1510.00.
SPRINGING HEIFERS LARGE 1160.00-1260.00, SMALL 610.00-1000.00.
SHORTBRED HEIFERS 250.00-550.00.
OPEN BREEDING AGE HEIFERS 600.00-710.00.
SMALL OPEN HEIFERS 250.00-550.00.
BULLS PUREBRED 550.00-850.00.
HERD OF 65 HEAD ALL STAGES 300.00-1125.00, BETTER COWS 1225.00-1300.00.

Westminster Livestock Auction

Hagerstown, Md.
October 1, 1996
Report supplied by auction
SLAUGHTER COWS: 141 HEAD, 1.00-2.00 HIGHER. UTILITY 33.00-37.00; HIGH DRESSING 38.00-40.25; CANNERS 28.00-32.00; SHELLY 28.00 DOWN.
BULLS: 15 HEAD. YS#1 39.75-42.75, 1 AT 45.75; YG#2 34.00-38.00.
FED STEERS: FEW HIGH CHOICE 1200-1400 LBS. 72.00; HIGH CHOICE 1000-1150 LBS. 62.00-69.00; LOW CHOICE 58.00-61.00; HIGH CHOICE HOLSTEINS 1100-1400 LBS. 60.00-64.00.
FED HEIFERS: FEW OFFERED. 1 CHOICE 1050 LBS. AT 64.75.
VEAL CALVES: 159 HEAD. CHOICE,

Frederick Livestock Auction

Frederick, Md.
September 30, 1996
Report Supplied by Auction
SLAUGHTER COWS: 115 HEAD, 1.00 HIGHER. UTILITY 33.00-38.00; HIGH DRESSING 38.00-39.75; CANNERS 28.00-32.00; SHELLY 27.00 DOWN.
BULLS: 2 HEAD. YG#1 HIGH DRESSING 1925 LBS. AT 45.50; YG#2 2020 LBS. AT 37.25.
FED STEERS: NO CHOICE; 1 SELECT 1070 LBS. AT 55.00.

Lebanon Produce Auction

Reistville, Pa.
Oct. 1 & 3
Report Supplied by Auction
APPLES: 4.00-4.50 1/2 BU., 7.00-7.75 BU.
APPLE CIDER: 1.10-1.20 GAL., .70 QT.
BEANS: 6.00-9.00 BU.
BROCCOLI: .10-.60 HEAD.
CABBAGE: .10-.38 HEAD.
CAULIFLOWER: .10-.50 HEAD.
EGGPLANT: 6.25-9.50 BU.
ORNAMENTALS: GOURDS 3.75-6.50 BU.; INDIAN CORN .25-.90 BUNCH, FINGERS .15-.45 BUNCH; CORN WREATH 2.00-2.50 EACH; FACE PUMPKINS .85-2.40 EACH; JACK-BE-LITTLES 2.75-4.00 1/2 BU.; BABY BEAR

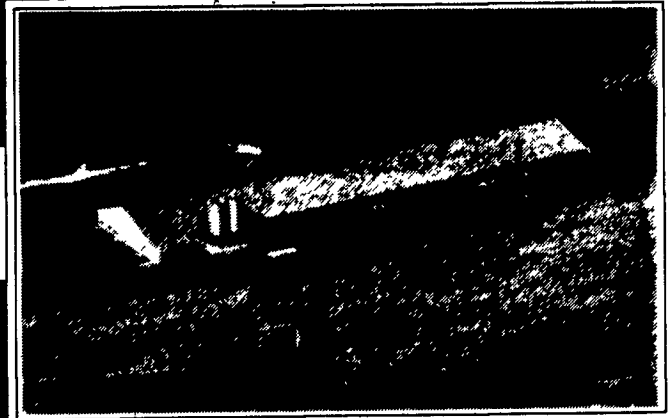
Improve Your Cash Flow with Guaranteed Monthly Payments

1,000 - 2,000 Head Finishing Facilities or 1,000 - 4,000 Head Segregated Early Wean Facilities

Contracts available for existing or new buildings within 75 miles of Elizabethtown, PA



419 West High Street
Elizabethtown, PA 17022-2189



Excellent Pork Production Facilities

Quality Animals & Service

White Oak Mills Can Contribute to Your Total Agricultural Profitability . . .

- Modest Labor Requirements
- Building Design, SEW & Finishing Programs
- Quality Feeder Pigs, Feed and Service
- Positive Cash Flow & Depreciation Write-Offs
- Superior On-Farm Technical Support



Quality Products & Service
Working For You

Call Toll-Free (800) 468-5524