

**WILLIAM WESSELS  
USED CARS**

86 Nissan Rollback, 2900 GVW \$15,900	89 Chevy C-30 Dump, 350 V-8, 42,608 miles \$12,900
90 Chevy 50 Tiltmaster Diesel, 20' Box, 18,000 GVW \$12,900	89 Chevy C-20 Utility Box 350 V8, Auto, 188,206 Miles \$5,990
90 Chevy Suburban Silverado 4x4 3 Seats, Dual AC, "Barn Doors" Trackhitch, 104,206 Miles \$10,900	34 NASH Unusually Original \$9,900
92 Ford F150, 4-9 6 cyl, 5 Speed, 98,206 Miles, AC \$8,990	94 Ford E-150 Cargo Van, 6 Cyl., Auto, AC, Partitioned, 37,206 Miles \$12,900
93 Ford Bronco Eddie Bauer 351 V-8, Auto, AC, 72,206 Miles \$15,900	90 Dodge Dump 4x4 w/Plow, 360 V-8, 5 Speed, 56,206 Miles \$13,900
87 Ford E-350 16' Cube Van 460 V8, Auto \$3,990	91 Chevy G-30, 14' Cube Van, 88,206 Miles \$10,900
93 Ford Explorer Sport 4x4, 2 Dr., Deep Green, 83,000 Miles \$13,900	91 Jeep Cherokee Larado 4.0 6-cyl., 5 speed, AC, Red, 91,000 miles \$9,900
86 Dodge Pick-up, Slant 6, 4 speed \$2,590	89 Ford F350 Dually, 460, V8, Auto, PS, AC, 99,206 Miles \$7,990
84 Ford Dump 8.2 Diesel, 4 speed \$8,900	90 GMC 4000 Diesel Cab and Chassis \$9,900
93 Ford Ext. E-250 Cargo Van, 4.9 Liter, Auto, PS, 78,106 miles \$11,900	92 Ford 25' Motor Home, 10,206 miles \$22,900
93 Jeep Grand Cherokee Limited, 5.2 V-8, Leather Interior, 37,712 miles \$23,900	84 Ford F150 4x4, 351 V-8, 4 Speed, 93,206 Miles, NICE! \$4,990
95 Ford F-150 4x4 XL, 4.9 Liter, Lock-Outs, Auto, AC, 14,806 miles \$16,900	86 Ford Bronco, Defective Motor \$2,490
89 Chev 14' Cube Van 350 V-8, 109,206 Miles \$8,990	89 Bronco 4x4 V-8 Plain, But Functional \$5,990

**WILLIAM WESSELS  
USED CARS**  
811 Route 15 Dillsburg, PA  
1-800-440-4433 1-717-432-2918  
Notary Public - Temporary Tags

**LEFEVER BROS.  
CHEVROLET  
CHEVY TRUCKS GEO**

YOUR DIRECT LINE TO GENUINE GM PARTS

**(800) 533-3837**

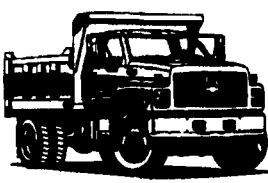
When you call the number listed above, you'll reach our wholesale parts specialists, who can help you keep your GM repair work moving quickly.

Ask about:

- Specializing in GM Medium Duty Trucks, Current and Obsolete.
- \$500,000 Parts Inventory.
- Parts Locator for Those Hard to Find Items.
- We Ship Anywhere, Local Delivery Available.
- Experienced, Knowledgeable Personnel.

Mon., Tues., Thurs., Fri.  
7:30 a.m.-4:30 p.m. (717) 432-9697  
Weds. 7:30 a.m.-8:30 p.m. Quality Dealer Since 1921  
Major Credit Cards Accepted 406 U.S. Rt. 15, Dillsburg, PA 17019

**GM Goodwrench Service**



**Kodiak  
Chevy Trucks  
CAT DIESEL POWER**

Call 1-800-414-4705

OR

717-626-4705

Ask for Dean or Amos Sr.

Ready To Put To Work

From Your Eager Beaver Dealer  
in Lancaster County, Penna.

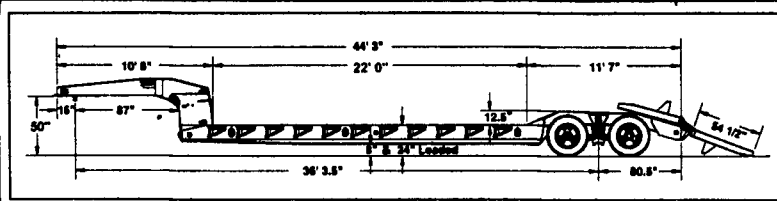
**Eager Beaver**

Model 35GSL/BR

Model 35GSL/BR

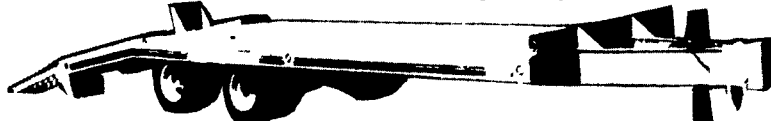
35 Ton Detachable Gooseneck  
Dual Axle Single Point Suspension

- Capacity 70,000 lbs
- Trailer Weight 17,500 lbs (includes listed options)
- Overall Width 102" Length 44'3"
- Deck Width 102" Length 22'
- Height 24" (Loaded)
- Tires: Eight 255/70R22.5 (H) Radial



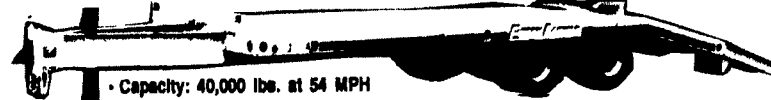
**New Eager Beaver TRAILERS**

MODEL 10HA: 10 Ton Heavy Duty Air Brakes



- Capacity: 20,000 lbs. at 54 MPH • Trailer Weight: 5,800 lbs. • Tires: Eight 8.75x16.5 (E)
- Deck Width: 96", Length: 24", • Overall Width: 96", Length: 29'6"
- Height 32"

MODEL 20HA: 20 Ton Air Brakes, Low Profile :



- Capacity: 40,000 lbs. at 54 MPH
- Trailer Weight: 7,050 lbs.
- Overall Width: 96", Length: 29'6"
- Deck Width: 96", Length: 24', Height: 34"
- Tires: Eight 215/75R17.5 H Radial

**BINKLEY-HURST  
BROS. INC.**

133 Rothsville Station Rd.  
P.O. Box 0365  
Littiz, PA 17543-0365  
(717) 626-4705  
1-800-414-4705

**Farm Plan**  
A Service of FFC Financial  
Fax 717-626-0096

**35 TRUCKS & TRAILERS**

WANT: 26'/28" roll back for tandem truck. (412)254-4753.

WANTED: Crankshaft for Cummins V8 diesel engine model V555. (717)359-7690

DM-Mack 3,600 gallon liquid manure tank with vacuum. Fair Condition. \$12,000 OBO 717-776-3322

1987 LN 8000 Ford 26' Super 10 Jerr Dan, 33,000 GVW, Very Good Condition  
**Lycoming Co.**  
(717)494-0441

**MOTORS**  
New & Rebuilt  
350, 366, 427, 454  
6.2 Diesels  
Rebuilt & Used  
Will Install  
Roll Back Service,  
(at cost)  
717-762-6415

**WASTE OIL**

Model 200 Ductile Furnace  
**BOILERS & FURNACES**  
Since 1929 by **Shenandoah**  
For Information Contact:  
**Neveco Central Heat**  
393 W. Lexington Rd.  
Littiz, PA 17543  
717-626-1479  
Sales, Installation and Service

1997 Dodge Dakota's Here!  
1987 Ford F150, 4WD, 4x4  
1990 Dodge 2WD, Real Nice  
1996 Ford F150 18,000, A, AC, Cruise, Tilt, PL, PW  
12 CLUB CABS 96-97 Diesel & Gas  
ASK FOR MILTON HESS Certified Truck Specialist 717-367-6644 717-653-6667 Elizabethtown, PA

**36 REAL ESTATE**

Columbia County Farm: by owner, 93 acres, can subdivide. 30-35 tillable. Abundant wildlife, pond. Nice 8 room, 2 bedroom home, fireplace. Shop building/large garage, barn, much more. \$209,000. (717)458-5778.

**Snyder County**  
Hog barn and home site, 4 acres total, well installed, perc approved. 200 sow farrow to feeder pig operation. For Sale By owner. \$100,000. 717/658-4641.

**36 REAL ESTATE**

Columbia County Cottage: insulated, all utilities, 1A, needs well, \$24,000. (717)458-5778.

Cottage #18 mount. Lebanon (County) Camp Meeting Asso., Rt 343, clean quiet wooded retreat. Low taxes, association fee. \$9,500. Will finance (717)293-8457.

Dairy barn for RENT: 50 stalls, pipeline milker, heifer facilities, living quarters, corn silage avail., 40 acres of land available. LanCo. Send replies to: 350 Nottingham Rd., Nottingham, PA 19362.

Excellent hunting and fishing wilderness cabin. Poconoco's only 5 miles off RT80, near White Haven, PA. Electric, heat. Call Judy U.S.A. REALTY 717-868-6320.

Farm for RENT: Beef - up to 30 head. Barn w/70 acres, excellent pasture and stream. 2,500 bales of hay. Williamsport, PA. (717)323-1809.

LAND FOR RENT: 125ac. farm w/large outbuildings. Ideal for raising cattle. East Berlin, York Co. (717)259-9685.

FOR RENT: 11/1/96, 105A limestone dairy farm, 5 miles West Hagerstown, MD. 65x130 bank barn, 35 comfort stalls, loafing building, attached 10 stall milking building, 20x60 silo, spring, well, 8 room house, oil, electric heat (Mennonite area). 301-739-5061 NO Sunday calls.

FOR RENT: 150 Acre Dairy Farm, Cumberland Co., 100A tillable, double 6 parlor, 3 silos, lagoon. Standing corn for sale. 717/438-3205.

FOR RENT: Day or week. Spruce Creek area, Huntingdon Co., PA. Hunting, fishing, recreation, small game, deer, bear, turkey. Lodge sleeps up to 15. 814-632-8667 evenings.

Former sheep farm, Bradford Co., PA. Large renovated 4-5 BR's farmhouse w/shop, triple garage, plus large barn, 62 rolling acres and woods. Call 1-800-276-4256.

For Rent: 42 acre farmette, nice brick home, large bank barn, other outbuildings. At foot of mountain along Rt.25 on Dauphin, Schuylkill Co. line. 717/682-8904.

For Rent: Flexible commercial building & lot, Lancaster Co., PA. 717/664-2629.

For Rent: Littlestown PA area. Brick country home w/nice setting. 3BR, bath, central heat. Available 11/1, rent \$495/per month. References required. Inquire POB 21, Littlestown, PA 17340-0021.

FRANKLIN COUNTY: 1.5+A w/1 story home/cabin. Joins state land. Near fishing at Cowan's Gap State Park. Nice investment property ready to move into at \$65,000. 15+A close to State land AND fishing. Concord area, asking \$26,500. KEEFER REAL ESTATE 717-349-2262.

HANOVER: Adams County farmettes 8.2 to 27.0 acres, secluded, perked and probed. Some deed restrictions to protect your property. All have considerable hard road frontage. Also available 132 acre farm with brick house, well and septic, some outbuildings 717-867-3968.