



HOSTETLER

Truck Bodies & Trailers
717-667-3921

Milroy, PA - Located between Lewistown
And State College on Rt. 322 in PA.



We have developed a Dump Body Tailgate for Knapheide Grain Bodies. Call for More Information



14' Hostetler/Knapheide Grain Dump Trailer, 14,000# GVW, 40' Removable Grain Sides
\$7,760



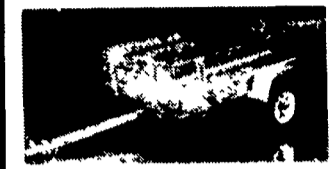
Pickup Insert Dumper, Electric Hydraulic, Completely Self Contained, 4000 Capacity, Easy To Install
\$1,895 Cash & Carry



Grain Bodies, Removable Sides, Various Rears Available, With or Without Hoist 16' w/40 Sides Not Installed
\$2,495



New Designed Corn Pro Bumper Pull Livestock Trailers, Rubber Torsion Axles, Treated Pine Floor
6'x16' 3500# Axles **\$3,200**
6'8" Wide x 16' Long 3500# Axles **\$3,305**
6'8" Wide x 16' Long 6000# Axles **\$3,695**

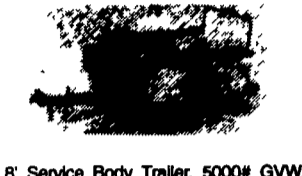


5'x8' Single Axle Aluminum, Wood Racks, 13" Tires, 2200# GVW, Tilt Deck
5'x8' **\$1,250** 5'x10' **\$1,450**



Hostetler Special Light Weight Steel Grain Body, Double Acting Tailgate, All Welded Together Construction

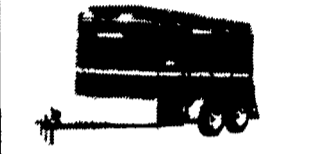
Financing Available for Individuals
Leasing Available for Business or Farm Use



8' Service Body Trailer, 5000# GVW, Electric Brakes, Fiberglass Service Body
\$1,995



18' Deck Over Trailer, 16' Flat 2' Dovetail with 5' Ramps, 10,000 Lg. GVW, Adj. Coupler
\$3,395



Moritz Slant Load Horse Combo Trailers, Rubber Torsion Axles, Swing Open Divider and Dressing Room Wall
6'x13' 2 Horse **\$3,250**
6'x16' 3 Horse **\$3,600**



Dump Trailers,
5'x8' Single Axle 5000# GVW **\$2,750**
6'x10' Tandem Axle 7000#GVW **\$3,495**
6'x10' Tandem Axle 10,000#GVW **\$3,895**



Combo Dump Trailer, 8' Dump Truck Body, 6' Stationary Stake Body w/40' Stake, Racks, 10,000# GVW.
Reduced to **\$5,195**



Hostetler 7'x12' Contractor Dump Trailer, Dump Truck Body, with Truck Scissor Hoist, 10,000# GVW, 30" Front with 20" Sides & Tailgate, Heavy Duty
\$5,695



Tool Boxes, 36"x18"x18" **\$147**
24"x18"x18" **\$132** 42"x18"x18" **\$195**
30"x18"x18" **\$140** 48"x18"x18" **\$163**



Single and Dual Wheel Pick Up Flatbeds, Bulkhead Outside Pockets, Rear Skirt With or Without Gooseneck Compartments. Starting At **\$770**

USED 6'x16' Moritz Livestock Bumper Pull Trailer
\$1,895, as is not pretty but solid



Used Linville 2 Horse Bumper Pull Paddling, Matting, Carpeted Dressing Room, Very Nice Condition
\$3,495

1993 RB 690S Mack, 300HP, T2070 Trans, 18K Frt 44K Rears, A/C, Double Frame, 25' Deck, 75 Gal Fuel Hyd. Tank, 52,000 Miles
717-354-3199
FAX 717-355-0625

SPANKEY'S NEW TRUCK CENTER

717-691-5262 or 717-737-7777
E. Main St., Mechanicsburg, PA

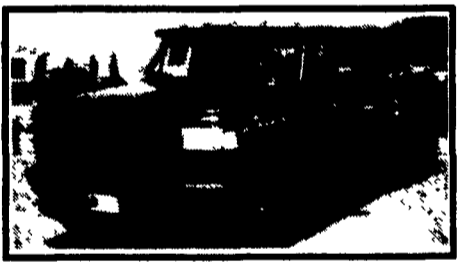
1995 Chevy K3500 4x4 Dually, 6L Diesel, 5 spd. Stick, Silverado, Only 27K
1993 Chevy K3500 X-Cab 4x4 AT, Silverado, Dually 6.5L Turbo Diesel, 42K Clean!
1994 F250 Super-Cab 4x4 7.3 Turbo diesel, AT, XLT Pkg. Loaded 36K, Nice Truck!!
1991 Ford F350 Dually Diesel 7.3L, This Is A Real Workhorse, Call Now!
1990 Chevy K2500 4x4 350-V8, AT, Only 48K, Silverado, Perfect For Plowing
1995 Ford F150 XLT 4x4 Shortbed AT, V8, AC, Loaded Just Serviced, Call Now
1993 Chevy Suburban 4x4 Silverado AT, AC, 350-V8 Excellent Condition!
1994 Jeep Grand Cherokee Laredo, AT, V8, Only 24K, Leather! 15 Others to Choose From.
Largest Selection Anywhere!

SEE US AT OUR WEB SITE <http://www.spankeys.com>

Mark Vills • Pickups • Broncos • Stake Body • Crew Cabs

Contours • Aspires • Diesel Pickups • Mustangs • Thunderbirds

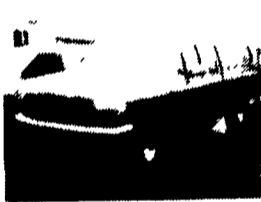
Explorers • Grand Marquis • XLTs • Custom Vans



Great Selection F250's & F350's Supercab & Crew Cab
Power-Stroke Diesels In Stock



'91 FORD F250 DIESEL
4x2, Automatic, XLT, Running Boards, only 59,000 miles. NICE



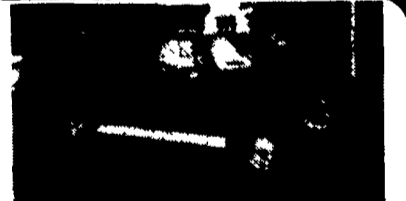
'95 FORD F150 4x4 SUPERCAB
XLT, Automatic, Leer Cap, Clean Truck #1633A



'95 FORD F150 4x4
Automatic, 6-cyl. XL Pkg., #1745A
ONLY \$16,999



'97 FORD EXPEDITION
All New sport Utility - 5 in stock. Many more on the way. Replaces the Bronco with style



'91 CHEVY SUBURBAN
4x4, Dual Air, All the Seats, 350 V8, Automatic. Only 34,000 miles



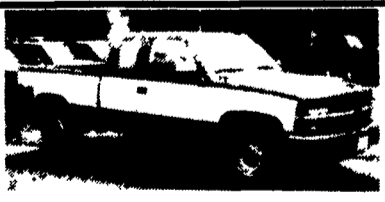
'97 FORD F150 4x4 SUPERCAB
4x4 V8, Automatic, XLT, Loaded, Hard To Find #3230



96 FORD F250 4X4 WORK TRUCK
V8, Automatic, XL Pkg
Was \$23,627 BLOW OUT **\$21,999**



97 FORD F250 4x4 SUPER CAB
7.3 Power Stroke Diesel, Auto, A/C, Awesome Work Truck #3209



94 CHEV. K2500 4x4
Short Bed, 6.5 Turbo Diesel, Silverado, 37,000 Miles, #P2757
NOW ONLY \$23,999



'94 FORD F150 SUPER CAB
Long Bed, 4x4, 302, AT, A/C, 16,000 Miles, #P2768
NOW ONLY \$21,499



96 FORD F250 4X4
Reg Cab, 351-V8, XLT, Automatic, #1625
Was \$27,949 NOW **\$25,999**

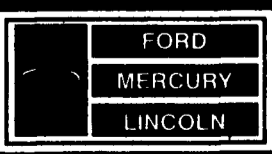


'94 FORD RANGER SUPER CAB 4X4
XLT, only 25,000 miles. Was \$17,999
NOW ONLY \$16,499



'97 MERCURY MOUNTAINEER 4X4
Loaded Sport Utility, V8 Engine, Automatic, #3052 - NICE -

Unless the Chapman Emblem is on Your Car or Truck, ... You Probably Paid Too Much!



LEBANON

A Division of THE CHAPMAN AUTO GROUP

-20th & CUMBERLAND STS. - RT. 422 WEST
9-9 DAILY, 9-5 SATURDAY • SHEEHY HOTLINE (717) 272-7671 OR 533-5293

PARTS DEPT. OPEN
DAILY 8-5
SAT 8-12
717-273-8168

Mystiques • Cougars • Continentals • Town Cars • 4x4s • Rangers