

**35 TRUCKS & TRAILERS**

'87 Dodge 150 8 pass. van, 318, auto, PS, PB, PW, PDL, cruise, tilt, air, privacy glass, burgundy & silver, \$3,675. 717-733-2873

'89 Ford XLT Lariat, F150, super cab, 302 EFI, 5 spd, PS, PB, air, AM-FM, dual tanks, 64,000 one owner miles, new radials, blue, excellent condition, \$9,900. 717-733-2873

'86 GMC 3500, dual wheel, cab & chassis, 350 4-spd, PS, PB, 60" cab to axle, 10,000 GVW, 41,000 original miles, red, like new, \$8,900. 717-733-2873

'90 GMC SLE 1500 Suburban, 350 FI, auto, PS, PB, PW, PDL, cruise, tilt, dual air, privacy glass, AM-FM cassette, 8 passenger, 56,000 one owner miles, blue & silver, excellent condition, \$12,900. 717-733-2873

'88 Ford F250, 4x4, 351 gas, auto, AC, cap, w/1993 GVM slide-in sprayer unit, 400 gallon, 42' hyd. booms, Ravens radar controller, foam markers, 8hp Honda pump, rinse system. Will sell together or separately, \$17,500 OBO. Franklin Co. 717-263-6231.

'91 Ford E150 club wagon, 8 passenger, 302 EFI, auto, PS, PB, PW, PDL, AM-FM cassette, cruise, tilt, dual air, privacy glass, 2 tone blue, \$10,900. 717-733-2873

'91 GMC HD3500, 1-ton w/14' stake body dump, excellent condition, 32,000 miles, \$14,500 OBO. 410-452-5537 after 6pm.

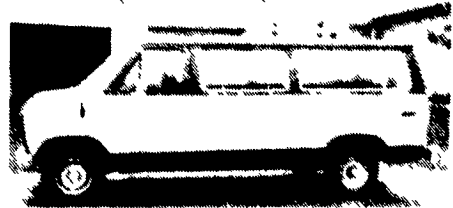
'92 Benson 38 1/2' frameless dump sealed gate, roll tarp, 1 owner, excellent condition. Must sell! (215)343-0156.

'93 Ford XL F150 super cab, 300 EFI, 5 spd, PS, PB, air, AM-FM cassette, dual tanks, 6,250 GVW, 49,000 miles, 2 tone blue, excellent condition, \$12,500. 717-733-2873

'94 Ford XL F150 HD, 300 EFI, 5 spd, PS, PB, AM-FM, dual tanks, 6,250 GVW, new radials, excellent condition, black, \$9,900. 717-733-2873

95 Dodge 2500, 4x4, Meyers Snowplow, at, air, 23,000 miles w/warranties, \$22,600.; 301/582-3872.

Aluminum dump trailer, 24', \$3,200. (717)354-3105.



FOR SALE:

**1987 Ford Van,**

V8, Automatic, Air, 95,000 Miles, Good Condition, New Inspection, No Rear Seats

Call 717-273-1791

**Melard's Truck & Auto Sales**

955 East Main Street  
Ephrata, PA 17522  
(717) 738-4870

- 1995 Ford Windstar LX V6 Auto, Dual Air & Heat Elec. Windows, Locks, Tilt, Cruise, AM/FM, Cass, 46,000 Miles, Green.....\$16,900
- 1994 Mercury Villager, LS V6 Auto, Dual Air & Heat Elec. Windows, Locks, Seat Cruise, Tilt, AM/FM/Cass, 43,000 miles, Maroon.....\$16,900
- 1994 GMC Safari Ext. SLE All Wheel Drive V6 Auto, Dual Air, Elec. Windows, Locks, Cruise, Tilt, AM/FM/Cass, 65,000 Miles, Teal....\$15,900
- 1993 Astro Ext. CL, V6 Auto, Dual Air Elec. Windows, Locks, Cruise, Tilt, AM/FM/Cass, Privacy Glass, 44,000 Miles, Black.....\$12,900
- 1994 Ford E150 XLT 302 - Auto Dual Air & Heat Elec. Windows & Locks, Cruise, Tilt, AM/FM/Cass, 64,000 Miles, White.....\$14,000
- 1990 Ford E150 XLT 302 Auto, Dual Air & Heat, Elec. Windows & Locks, Cruise, Tilt, AM/FM/Cass, Privacy Glass, Blue & Silver.....\$9,200
- 1994 GMC Safari SLT Ext., V6 Auto., All Wheel Drive, Dual Air & Heat, Elec. Windows, Locks, Seat, Tilt, Cruise, AM/FM/Cass, Privacy Glass, 39,000 Miles.....\$18,500 BLACK
- 1993 Mercury Sable CS V6, Auto, Air, Cruise, Tilt, AM/FM/Cass, Elec. Windows, Locks, Seat, 43,000 Miles, Black.....\$9,995
- 1993 Mercury Topaz LS 4dr, 4 cyl., Auto, Air, Cruise, Tilt, Elec. Windows & Locks, AM/FM/Cass, 14,000 Miles, Black.....\$8,900
- 1987 Dakota Pickup 2x4 V6 Auto Air Cruise, Topper, AM/FM 88,000 Miles, 2-Tone Blue.....\$5,900

**Klines Truck & Equipment**

Sales & Service

Hagerstown, Md. 21740  
Located Off I-81 at MD/PA Line  
(301) 797-4068



1983 International S-1900 DT 466, 5 spd, 2 spd, PS, Air Brakes, w/flatbed



1981-83's Ford LN 8000 Ex S/A Tractors Exc. for S/A Dumps, 3208 Cat diesel, 10 spd., 4 to choose from  
**Choice \$4,500**

1985 Ford LN-8000, S/A Dump, 3208 Cat diesel, 7 spd, PS, Air Brakes, 39,000 GVW, as is \$12,250.  
with new paint \$14,250

1984 International S-1900 S/A Dump, DT 466 Allison, Auto, PS, Air Brakes, 35,000 GVW w/new paint \$12,500

1981 International S-2500, S/A Dump, DT 466 Allison, Auto PS, Air Brakes, Heavy Specs, as is \$11,250  
with new paint \$13,250

1994 Chev 3500, 1 ton, C&C 350, 5 spd, PS, AC, AM-FM, just turned 100,000 miles exc cond \$13,250

**Huntingdon Equipment**

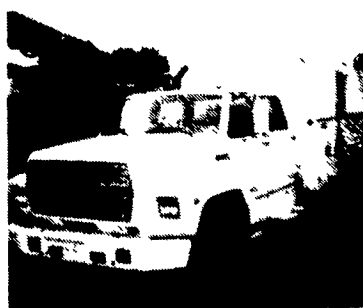
Rentals Available

GOOD USED EQUIPMENT

Huntingdon Valley, PA • 215-672-9667 • 1-800-543-3833 • Eddie



Vermeer M-470 Trencher with backhoe. This is one of six units we have all ready to work. Starting at \$4,500.



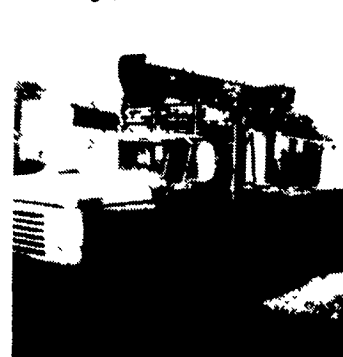
1985 F-600 8.2 Diesel, Auto, 5 Man Cab, Utility With Rollup Door On Rear, Clean, Low Mileage, 1 Left. Priced To Sell!



1986 Chevy 5 Man Cab Dump, 3208 Cat - 5/2, Air Brakes. Dump with Lift Gate. Dump 14' Long, GVW 34,000 pounds.



Pitman Boom with jib 15,000 pounds cap - 4 outriggers. Sale Price \$8,250.00 Won't Last Call Now!!



Need A Lift? We Have A Large Selection Of Boom Trucks Up To 14,000 lbs. Cap. Some With Post Diggers.



Bucket Trucks 28' to 65' Gas and Diesel. Call For Details.

**DIGGER DERRICKS/AERIAL BUCKETS/UTILITY EQUIPMENT**

**Frederick**

**THE TRUCK PLACE**

CENTRAL PA'S LARGEST GVW DEALER!

OVER 200 NEW AND USED TRUCKS IN STOCK!

6-1 TON DUALS IN STOCK

NEW 95 & 96 EXTEND & CREW CAB DUALS IN STOCK



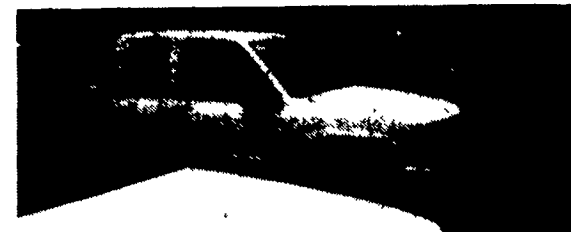
'90 FORD F250 w/Horseshoe Service Body, 351, V8, AT, A/C

**USED TRUCKS**

- 95 GMC K1500 SLE Club, 4x4, V8, AT, A/C
- 95 Chev Tradewinds Van, V8, AT, A/C, Conversion
- 94 GMC K1500 4X4, V8, AT, A/C
- 94 G20 Chev G20 Gladiator Conv Van, V8, AT, A/C, Loaded
- 94 Chev K1500 Ext Cab, V8, AT, 4x4, Conversion
- 94 Chev K1500 Z71, 4x4, V8, AT, PW, PL
- 94 Jeep Grand Cherokee, 4x4, AT, Leather, Loaded
- 93 GMC Suburban SLE, 4x4, V8, AT, A/C, PW
- 93 Chev C1500, V8, AT, PW
- 93 Ford Explorer XL, 4x4, AT, A/C, Loaded

If We Don't Have It, We'll Get It!

• BILL MORTENSEN • BILL BREault • BILL BAILEY • BOB FULTON • BARB KEEFER



'96 & '97 Extend Cabs In Stock Some With 3rd Door



1 Left  
**1996 CHEV. 1-TON CREW CAB DUALY 4X4**



'96 CHEV K3500 Utility Body, V8, AT, A/C, Snow Plow Prep. Pkg.

**USED TRUCKS**

- 93 Chev K1500 Sport Z71, 4x4, V8, AT
- 93 Chev Conversion Van, V6, AT, A/C, Conversion
- 93 Chev. C1500 WT, V6, 4x2, AT, Cap
- 93 Ford E150 Cargo Van, AT, A/C
- 93 Ford Explorer XL, V6, AT, A/C, 4x2
- 92 Chev D1500 Sport 4x4, AT, A/C
- 92 Dodge Mark III Van, V6, AT, Loaded
- 92 Chev K1500 4x4, V6, 5 Spd, A/C, Loaded
- 92 Jeep Wrangler Conv, 4x4, 4 Cyl, 4-Spd.

**Frederick**

The SUPERMARKET OF TRUCKS

(717) 274-1461 • (800) 222-5523

1505 Quentin Road, Rt. 72 (South) Lebanon, PA