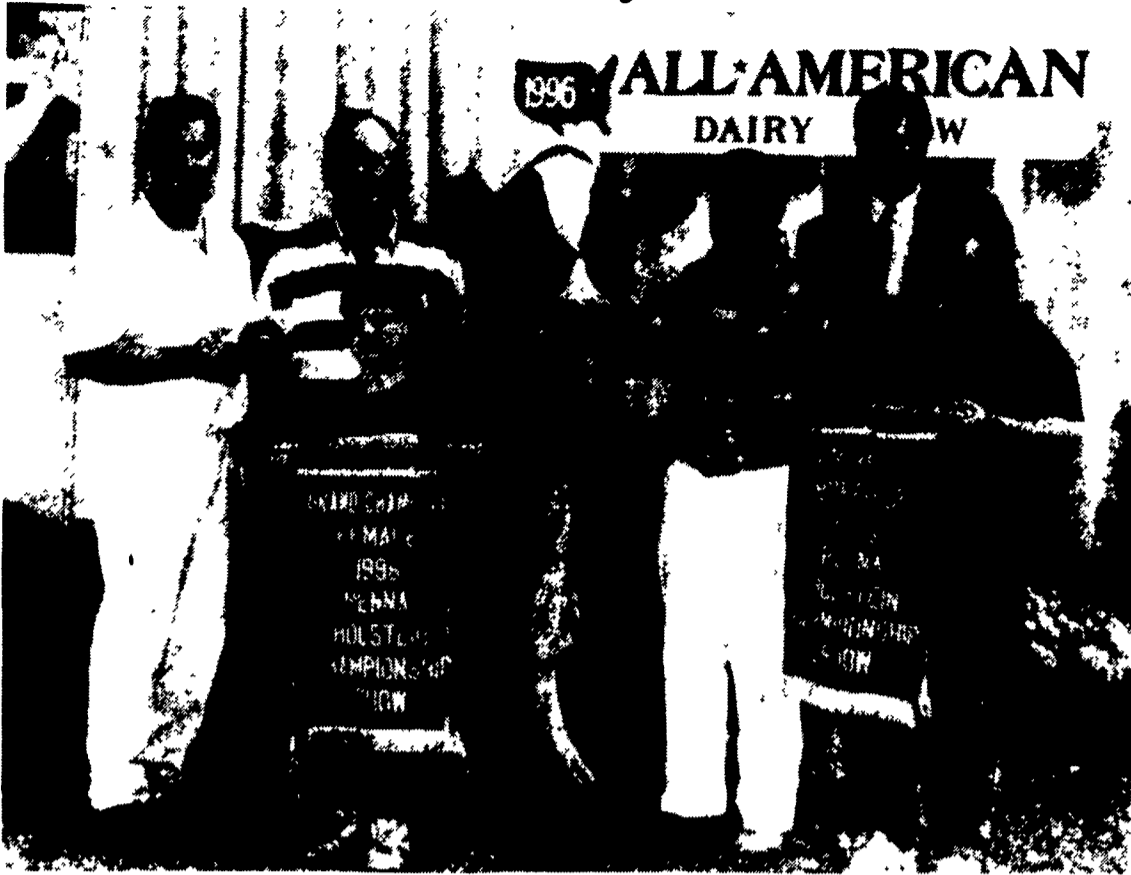


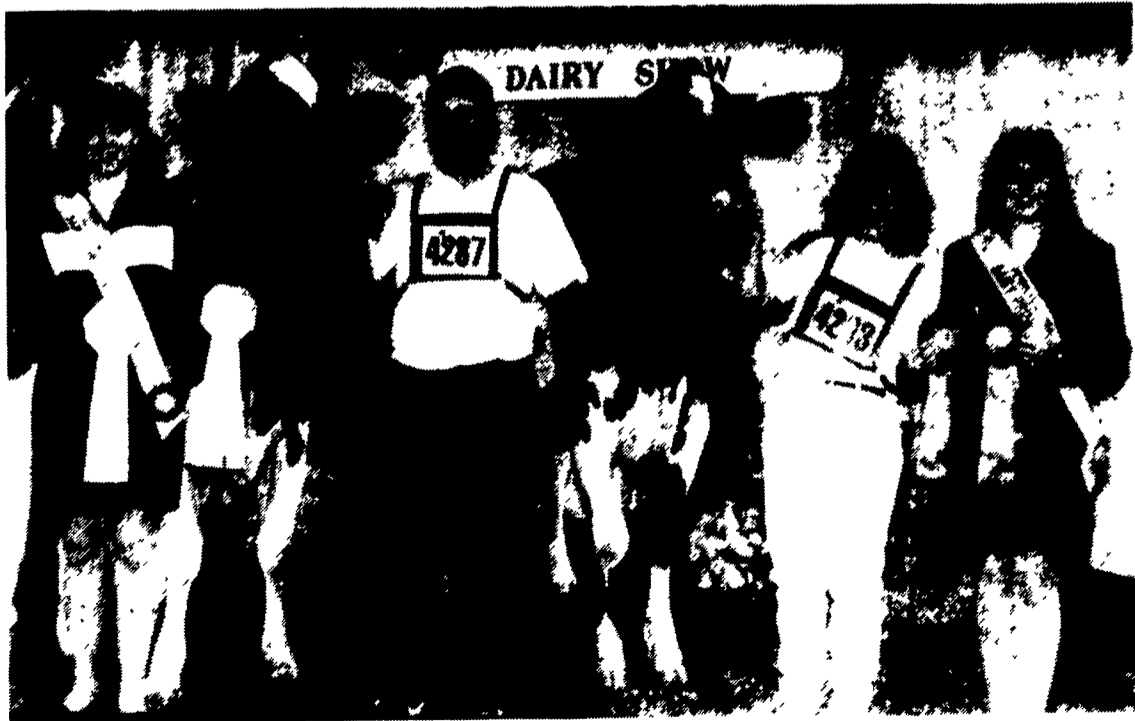
More Looks At Pennsylvania Holstein Fall Championship Winners



The family members of Penn Gate Farm were named premier breeder of the Pennsylvania State Holstein Association Fall Championship. From the left, Steve Wood stands with father-in-law Robert Gitt, Christine Wood holds the premier breeder banner and she and Steve's son Clayton holds the grand champion banner. A friend helps out as leadsman, while show judge Dennis Patrick stands behind.



Premier exhibitor of the Pennsylvania State Holstein Association Fall Championship is Campbell Run Farms, represented by the Mark Campbell and Doug Beatty families. From the left, front row are Mark, Sarah and Rachel Campbell, and Lyndsy Beatty. In the back row, parents are Dona and Mark Campbell and Doug and Karen Beatty.



From the left, Dennis Patrick, show judge, and Pennsylvania Alternate Dairy Princess Lisa Finch, stand next to David Kocher who holds the halter of the reserve intermediate champion (open and youth division) of the Pennsylvania State Holstein Association Fall Championship, while Tara Kocher holds the halter of her intermediate champion (also the state futurity winner) and state Dairy Princess Angela Werley presents ribbons.



From the left, Dennis Patrick, judge of the Pennsylvania State Holstein Association Fall Championship, stands with state Dairy Princess Angela Werley, David Castrogiovanni with the open division reserve junior champion, David Packard with the junior champion, and Trisha McIlwain who presents the junior champion rosette and a memento award.



The youth division junior champions of the Pennsylvania State Holstein Association Fall Championship are shown by Matthew Day with the reserve junior champion, and David Packard who holds the halter of Trisha McIlwain's junior champion, while she presents the rosette and memento award.

Maryland DHIA Report For August

The August Dairy Herd Improvement information for dairy herds from the DHI processing center in Provo, Utah. The list includes herds from Maryland, Pennsylvania, and West Virginia. The information is listed by herd name, county association, number of cows in the herd and the average production per cow in the herd based on Energy Corrected Milk (ECM). ECM combines milk production and components.

The ECM formula is: $(7.2 \times \text{lbs. protein}) + (12.95 \times \text{lbs. fat}) + (.327 \times \text{lbs. milk})$. To be included, the herd must have 10 cows averaging 65 pounds or more of ECM per cow, per day. All herds reported are on official DHI or DHIR test. Also listed are the top ten herds in Maryland for the Brown Swiss, Guernseys, and Jerseys, and the top eight herds for Ayrshires.

High Herd ECM (Monthly) By County-Part A Adams County (PA)			
Herd Name	Cows In Herd T	ECM	Herd Breed
Steve & Christine Wood	73	66.2	H
Anne Arundel Assoc.			
Herd Name	Cows In Herd T	ECM	Herd Breed
Dairy Cattle Research	158	66.4	H

(Turn to Page C7)