

LANCASTER COUNTY LIVESTOCK MARKET AUCTION

Lancaster Co. Weekly Review
 NEW HOLLAND, PA
 FRI SEPTEMBER 20, 1996

	CATTLE	CALVES
THIS WEEK	2575	1675
LAST WEEK	2792	1661
LAST YEAR	2839	1722

CATTLE: Slaughter steers steady, instances 50 higher on High Choice and Prime; slaughter heifers steady; cows 1.00-2.00 lower, after some early sales being 3.00-4.00 lower; bullocks 1.00 lower; bulls 1.00-2.00 lower. Supply included 35 percent slaughter steers, 6 percent slaughter heifers, 38 percent cows, 4 percent bulls, with the balance feeders.

SLAUGHTER STEERS: High Choice and Prime 2-4 1200-1475 lb 70.00-72.00, few 72.00-73.00; Choice 2-3 few 4 1150-1450 lb 67.50-70.00, few 70.00-70.75; few Choice and Prime 3-4 1425-1525 lb 67.00-68.75; Select and low Choice 2-3 1050-1475 lb 62.00-67.50; Select 1-2 1050-1300 lb 57.75-61.60.

HOLSTEINS: High Choice and Prime 2-3 1300-1550 lb 61.50-63.75; Choice 2-3 1100-1500 lb 56.00-60.00; Select 1-3 1100-1450 lb 52.50-56.00; one lot Standard 1-2 1225 lb 56.75.

SLAUGHTER HEIFERS: Choice 2-3 985-1225 lb 63.50-66.60, couple Choice 2 66.75-69.00; Select 2-3 950-1150 lb 59.00-62.50.

COWS: LOW DRESSING BULK HIGH DRESSING Breaking Utility and Commercial 2-3 36.00-40.00 40.00-42.75 Commercial 2-4 30.00-35.00 Cutter and Boning Utility 1-3 31.00-33.00 33.00-37.00 37.00-39.00 Canner and low Cutter 1-2 21.50-27.00 27.00-31.00

BULLOCKS: Few Choice 2-3 1140-1400 lb 51.50-54.50; Select 1-3 1100-1400 lb 46.00-49.00.

BULLS: Yield grade 1 1200-1800 lb 40.00-44.00, few 44.00-48.00, couple 50.00-52.00; Yield grade 2 1000-1800 lb 33.50-40.00.

CALVES: Vealers steady; slaughter calves 3.00-5.00 lower. Demand fair for Holstein bulls and heifers to return to farm.

VEALERS: Few Choice 170-280 lb 59.00-78.00; high Good and low Choice 135-275 lb 42.00-59.00, 80-110 lb 13.00-20.00; Standard and low Good 55-85 lb 11.00-14.00.

SLAUGHTER CALVES: Good and Choice 320-475 lb 37.00-45.00.

RETURNED TO FARM: Bulk 95-125 lb Holstein bulls 55.00-81.00, few 45.00-55.00, 85-90 lb 15.00-40.00; small frame 90-115 lb 26.00-35.00, 80-90 lb 15.00-20.00. Bulk 90-115 lb Holstein heifers 90.00-152.00, few 155.00-175.00; small frame 90-105 lb 55.00-65.00, with 20 head 70-75 lb 10.00.

GOATS: All goats sold by the head. Billies: Medium 70.00-85.00; Large 94.00-124.00. Nannies: Medium and Large 47.00-75.00. Kids: Choice 30.00-40.00; Good 20.00-30.00; Utility 15.00-20.00.

New Holland Livestock
 NEW HOLLAND, PA
 THU SEPTEMBER 19, 1996

	Cattle	Calves	Sheep	Goats
TODAY	989	639	181	218
LAST THURSDAY	1447	661	308	272
LAST YEAR	1064	589	239	357

CATTLE: Slaughter steers fully steady, instances 50 higher on High Choice and Prime; slaughter heifers not tested; cows 1.00-2.00 higher; bullocks and bulls steady at the week's decline. Supply included 40 percent slaughter steers and 38 percent cows.

SLAUGHTER STEERS: High Choice and Prime 2-4 1160-1430 lb 70.50-73.00; Choice 2-4 1150-1450 lb 67.50-70.50; few Choice and Prime 3-4 1425-1525 lb 67.00-68.75; Select and low Choice 2-3 1050-1450 lb 61.00-67.00; few Select 1-2 1050-1300 lb 57.75-61.50.

HOLSTEINS: Couple Choice and Prime 2-3 1290-1450 lb 61.75-62.75; few Choice 2-3 1090-1450 lb 56.00-59.00; Select 1-3 1100-1450 lb 52.50-56.00.

COWS: LOW DRESSING BULK HIGH DRESSING Breaking Utility and Commercial 2-3 37.00-40.00 40.00-42.75 Commercial 2-3 32.00-35.00 Cutter and Boning Utility 1-3 31.50-37.00 37.00-39.00 Canner and low Cutter 1-2 21.50-27.00 27.00-30.00

BULLOCKS: Few Choice 2-3 1140-1400 lb 51.50-54.50; Select 1-3 1100-1400 lb 46.00-49.00.

BULLS: Yield grade 2 1200-1600 lb 34.00-39.00; couple Yield grade 1 1500-1800 lb 40.00-41.00.

CALVES: Vealers and slaughter calves steady. Demand fair for Holstein bulls and heifers to return to farm.

VEALERS: Few Choice 170-280 lb 59.00-78.00; high Good and low Choice 135-275 lb 42.00-59.00, 80-110 lb 13.00-20.00; Standard and low Good 55-85 lb 11.00-14.00.

SLAUGHTER CALVES: Good and Choice 320-475 lb 31.00-45.00.

RETURNED TO FARM: Bulk 90-120 lb Holstein bulls 45.00-65.00, few 65.00-74.00; small frame 95-115 lb 35.00-45.00, 80-90 lb 20.00-35.00; few 90-115 lb Holstein heifers 90.00-150.00, couple 150.00-175.00.

SLAUGHTER LAMBS: Few Choice 1-3 35-55 lb 110.00-126.00, 60-75 lb 98.00-110.00, 80-110 lb 85.00-101.00. SLAUGHTER EWES: Choice 1-3 45.00-50.00; Utility and Good 1-3 25.00-48.00, few 2-4 16.00-25.00.

These two market reports were not updated this week because of an early press deadline.

Lancaster Livestock Auction
 Wednesday's market report has been discontinued until further notice because of insubstantial receipts.

VA Feeder Sales

ORANGE, VA
 SEPTEMBER 25, 1996
 Feeder Cattle 514 head Steers 173 head Medium and Large 1 Small 1 Medium and Large 2 300-400 - 39.00 - 42.00 44.50 400-500 50.00 - 56.50 41.00 - 49.00 54.00 - 56.00 500-600 53.00 - 58.00 41.00 - 47.00 44.50 - 50.00 600-700 46.00 - 55.00 - 45.00 - 46.00 700-800 54.00 - 58.00 - -

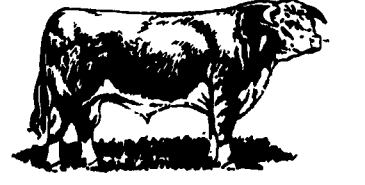
WYTHEVILLE, VA
 SEPTEMBER 24, 1996
 Feeder Cattle 543 head Steers 215 head Medium and Large 1 Small 1 Medium and Large 2 300-400 52.00 - 61.00 42.00 - 49.00 48.00 - 56.00 400-500 48.00 - 55.00 40.00 - 46.00 45.00 - 57.00 500-600 50.00 - 57.00 40.00 - 48.00 47.00 - 55.00 600-700 51.00 - 57.25 41.00 - 49.00 46.00 - 54.00 700-800 49.00 - 54.00 - 45.00 - 52.00 800-900 48.00 - 53.00 - 44.00 - 47.00 900-1000 42.00 - 49.50 - -

SOUTHSIDE, VA
 SEPTEMBER 25, 1996
 Feeder Cattle 375 head Steers 105 head Medium and Large 1 Small 1 Medium and Large 2 300-400 - 42.00 - 48.50 400-500 51.00 - 52.00 - 50.00 - 55.50 500-600 50.00 - 54.00 32.00 - 38.00 40.00 - 51.00 600-700 - 50.00 700-800 49.50 - 57.50 - 55.50 - 56.00 800-900 56.50 - -

STAUNTON UNION, VA
 SEPTEMBER 24, 1996
 Steers 149 head Medium and Large 1 Small 1 300-400 60.50 - 400-500 64.00 - 500-600 63.50 48.00 - 50.00 600-700 58.00 - 61.75 - 700-800 59.00 -

small frame 80/115 lbs. 17.00-23.00; 45 head 90/115 lbs. Holstein heifers 178.00-192.00 and 15 head 80/85 lbs. 70.00-75.00, 10 head small frame 90/95 lbs. 110.00 and 25 head 70/85 lbs. 15.00-20.70.

SHEEP...SLAUGHTER EWES: few Utility and Good 1-3 25.00-42.00. GOATS...NO MARKET TEST!



Lancaster Livestock Auction
 Monday, September 16, 1996
 Cattle Calves Hogs Sheep Goats
 Monday's Auction
 704 122 198 527 155
 Last Week
 726 79 87 371 262
 Last Year
 854 74 157 435 137

CATTLE: SLAUGHTER STEERS STEADY, ALTHOUGH HIGH CHOICE AND PRIME NOT FULLY TESTED; SLAUGHTER HEIFERS STEADY; COWS WEAK TO 1.00 LOWER; BULLOCKS SCARCE; BULLS 1.00-1.50 LOWER. SUPPLY INCLUDED 52 PERCENT SLAUGHTER STEERS, 16 PERCENT SLAUGHTER HEIFERS, 21 PERCENT COWS, WITH THE BALANCE BULLS.

SLAUGHTER STEERS: HIGH CHOICE AND PRIME 2-4 1200-1400 LB. 71.50-72.00; CHOICE 2-3 FEW 4 1175-1450 LB. 67.50-70.00, FEW 70.00-70.75, FEW LOTS 1100-1175 LB. 66.00-67.50; SELECT AND LOW CHOICE 2-3 1100-1450 LB. 62.50-67.50.

HOLSTEINS: HIGH CHOICE AND PRIME 2-3 1350-1550 LB. 61.75-62.75; CHOICE 2-3 1185-1500 LB. 58.50-60.00.

SLAUGHTER HEIFERS: CHOICE 2-3 985-1225 LB. 63.50-66.60. COUPLE CHOICE 2 66.75-69.00; SELECT 2-3 950-1150 LB. 59.00-62.50.

COWS: BREAKING UTILITY & COMMERCIAL 2-3 BULK 36.00-40.00, HIGH DRESSING 40.00-41.50; COMMERCIAL 2-4 BULK 30.00-35.00, CUTTER AND BONING UTILITY 1-3 LOW DRESSING 31.00-33.00, BULK 33.00-37.00; CANNER AND LOW CUTTER 1-2 LOW DRESSING 24.00-28.00, BULK 28.00-31.00.

BULLS: YIELD GRADE 1 1200-1800 LB. 40.00-44.00, FEW 44.00-48.00, COUPLE 50.00-52.00; YIELD GRADE 2 1000-1600 LB. 34.00-40.00.

CALVES: VEALERS STEADY; SLAUGHTER CALVES 3.00-5.00 LOWER.

VEALERS: COUPLE CHOICE 180-270 LB. 65.00-70.00; HIGH GOOD AND LOW CHOICE 130-250 LB. 40.00-60.00, 95-130 LB. 20.00-28.00; STANDARD AND LOW GOOD 65-85 LB. 15.00-20.00.

SLAUGHTER CAVLES: GOOD AND CHOICE 200-525 LB. 30.00-50.00.

RETURNED TO FARM: FEW 90-110 LB. HOLSTEIN BULLS 25.00-32.00.

HOGS: TREND NOT COMPARABLE. BARROWS & GILTS US 1-3 220-260 LB. 55.00-56.00; US 1-2 220-245 LB. 56.50-57.00.

SOWS: STEADY TO 3.00 HIGHER. US 1-3 300-500 LB. 43.00-45.00, 500-625 LB. 45.00-47.00.

BOARS: ALL WEIGHTS 35.00-37.00. SHEEP: SLAUGHTER LAMBS AND

Vintage Livestock
 PARADISE, PA
 SEPTEMBER 24, 1996
 Cattle Calves Sheep Goats

TODAY
 522 749 17 0
 LAST TUESDAY
 647 888 6 2
 LAST YEAR
 821 995 14 8

CATTLE... USDA ... Supply included 25% slaughter steers and 64% cows ... Choice and Prime sl. steers steady firm to .50 higher, Select and Low Choice steady, sl. heifers not tested, cows uneven Cutter and Utility firm to 1.00 higher, Canner and Low Cutter steady, bulls 1.00 to 2.00 lower.

SLAUGHTER STEERS: High Choice and Prime 2-4 1175/1425 lbs. 71.75-73.25, five head 73.50-73.75, Choice 2-3 few 4 1100/1475 lbs. 67.50-71.00, couple lots 71.50-72.35, Select and Low Choice 2-3 1100/1425 lbs. 64.00-67.00.

HOLSTEINS: few Select and Choice 2-3 1250/1425 lbs. 56.00-57.35.

COWS: Breaking Utility and Commercial 2-3 bulk 34.75-39.00, high dressing 40.00-43.00, Cutter and Boning Utility 1-3 low dressing 29.75-32.00, bulk 32.00-36.00, high dressing 36.00-37.50, Canner and Low Cutter 1-2 low dressing 21.00-26.00, bulk 26.00-30.00.

BULLS: Yield Grade No. 1-2 1100/2160 lbs. 32.50-35.25.

CALVES...Vealers 2.00 to 5.00 higher. Supply included 672 in graded sale of which 89% sold to return to farm.

VEALERS: couple Good 200/290 lbs. 24.00-35.00, High Good and Low Choice 80/110 lbs. 17.00-25.00, Standard and Low Good 70/85 lbs. 10.00-17.00.

RETURNED TO FARM: 175 head 100/125 lbs. Holstein bulls 76.00-84.00, 50 head 100/105 lbs. 92.00-94.00, 65 head 95 lbs. 57.00-72.00, 20 head 90 lbs. 50.00 and 50 head 80/85 lbs. 19.00-22.00, 160 head

SLAUGHTER EWES FULLY STEADY. SUPPLY INCLUDES AN ESTIMATED 85 PERCENT SLAUGHTER LAMBS WITH THE BALANCE SLAUGHTER EWES.

SLAUGHTER LAMBS: CHOICE 1-3 60-80 LB. 95.00-107.00, 80-110 LB. 90.00-95.00, 2-3 115-130 LB. 80.00-85.00.

SLAUGHTER EWES: UTILITY AND GOOD 1-2 120-150 LB. 45.00-60.00, 2-3 130-225 LB. 20.00-35.00.

GOATS: ALL GOATS SOLD BY THE HEAD: BILLIES: MEDIUM 70.00-85.00; NANNIES: MEDIUM AND LARGE 50.00-65.00; KIDS: CHOICE 45.00-60.00; GOOD 30.00-40.00.

QUALITY FEEDER CATTLE
 Financing Available
 * Fixed Interest Rates * Interest Due when Cattle Are Sold
 * No Monthly Payments

SCARFF BROS. INC.
 Cattle Dealers • Licensed & Bonded
 2300 Fallston Road • Fallston MD 21047

Lance N. Scarff Farm (410) 877-0370 Fax (410) 877-7802	C. Howard Scarff, II Home (717) 445-4355 Fax (717) 445-7237 Mobile (717) 940-2633	W. Conly Scarff Home (410) 838-5883 Mobile (410) 790-2650
--	--	---

Contract Feeding Programs • Marketing of Finished Cattle • Dairy Heifers

B&R CATTLE CO
 RD 1, Marietta, PA
 17547
 Office Phone:
 (717) 653-8164

Specializing in
 Stockers &
 Feeders

JOHN BOWMAN
 (717) 653-5728

RON RANCK
 (717) 656-9849

KIRKWOOD HAY AUCTION
 Hay, Straw and Grain Auction
 EVERY TUESDAY
 11:00

Located Rt. 472 5 miles south of Quarryville or 6 miles north of Oxford corner of Rt. 472 and Noble Road.

Lloyd H. Krailer,
 Auctioneer
 AU-000513L
 No out of state checks

HAY, STRAW, & CORN
 — SALE —

Sale Starts
 Every Friday At 10 AM

GREEN DRAGON MARKET & AUCTION
 955 N. State St.
 Ephrata, Pa. (717) 738-1117
 1 mile North of Ephrata on N. State St.
 Out of State Buyers-Cash or Certified Check Only

Get more capacity and better service from
 Chore-Time's *New Next Generation bin*

High Capacity 40" roof (left) allows more storage and stays cleaner than conventional 30" roof (right)

Hydro-Shield™ Weather Guard prevents water from running down hopper

ACCESS PLUS™ permits easy clean out of the bin from the ground.

Contracts available call for information

- Breeder
- Turkey
- Pullets
- Hog

Call for our free brochure "What is contract production?"

Replace your bulbs and save electricity with **SCREW IN FLUORESCENT LIGHTS**

5-7-9
 Watts 5.49 ea. | 13
 Watts 5.79 ea.

Light Bulbs 25 to 100 Watts **34¢ Ea.**

Brass Base - 5000 Hrs.

In Stock-36" & 48" Wide Kraft Paper * Made In USA

Northeast Agri Systems, Inc.
 Plywood Business Park
 139A West Airport Road
 Linz, PA 17543
 Ph (717) 569-2702
 1-800-673-2580

Delmarva Store
 328 University Ave
 Federalsburg, MD
 (Formerly Long Lumber)
 1-800-734-4361

VINTAGE SALES STABLES, INC.

SALE TUESDAYS

10:30 A.M. SLAUGHTER CATTLE AUCTION- STEERS, BULLS, HEIFERS, COWS, FEEDER CATTLE

6:30 P.M. CALVES, SHEEP, GOATS *GET CALVES IN EARLY- OUR STATE GRADER STARTS AT 10:30 A.M.

Feeder Stocker Sale
 Fri. Oct. 11 @ 1PM

FOR MORE INFORMATION CONTACT

L. ROBERT FRAME, SR., PRESIDENT
 BUS (717) 442-4181 BUS (717) 788-8204
 HOME (215) 458-8518
 IRWIN MARTIN, FIELD REP.
 (717) 733-7434
 KENNETH E. HERSHEY, FIELD REP.
 (717) 442-4874

TRUCKING SERVICE
 AVAIL-LOCAL & LONG DISTANCE
 (RT. 30, 10 MILES EAST OF LANCASTER IN PARADISE, PA)