

Regional Hay

September 23, 1996
Eastern Pa.

HAY & STRAW MARKET FOR EASTERN PA - (ALL HAY NO. 2 AND BETTER. PRICES PAID BY DEALERS AT THE FARM & PER TON.) HAY AND STRAW STEADY.

ALFALFA 90.00-120.00; MIXED HAY 85.00-125.00; TIMOTHY 85.00-125.00 FEW REPORTED 135.00; STRAW 50.00-70.00 FEW REPORTED 100.00; MULCH 25.00-35.00.

SUMMARY OF LANCASTER CO. HAY AUCTIONS FOR WEEK ENDING 09/20/96. PRICES PER TON: LOADS: 153 HAY, 53 STRAW & 36 EAR CORN. ALFALFA 97.00-170.00; MIXED HAY 82.00-170.00; TIMOTHY 105.00-170.00; STRAW 70.00-131.00; EAR CORN 153.00-190.00.

SUMMARY OF CENTRAL PA HAY AUCTIONS FOR WEEK ENDING 09/20/96. PRICES PER TON: LOADS: 77 HAY, 9 STRAW & 22 EAR CORN.

ALFALFA 74.00-135.00; MIXED HAY 72.00-125.00; TIMOTHY 62.00-125.00; STRAW 65.00-92.50; EAR CORN 152.50-182.50.

New Holland Feeder Pigs

New Holland, PA
Wed., September 25, 1996
Report Supplied by USDA

TODAY 326 HEAD
LAST WEDNESDAY 507 HEAD
LAST YEAR 927 HEAD
COMPARED TO LAST WEDNESDAY, FEEDER PIGS 5.00-10.00 HIGHER. ALL PIGS WEIGHED ON ARRIVAL

AND SOLD BY THE HUNDRED WEIGHT.

US#1-2: 51 HEAD 41-48 LBS. 80.00-90.00, WEIGHTED AVERAGE 45.53, WEIGHTED PRICE 86.64; 14 HEAD 50-51 LBS. 96.00-98.00, WEIGHTED AVERAGE 50.43, WEIGHTED PRICE 97.13; 15 HEAD 58 LBS. 74.00, WEIGHTED AVERAGE 58.00, WEIGHTED PRICE 74.00; 15 HEAD 63 LBS. 64.00, WEIGHTED AVERAGE 63.00, WEIGHTED PRICE 64.00; 22 HEAD 80 LBS. 60.00, WEIGHTED AVERAGE 80.00, WEIGHTED PRICE 60.00.

SLAUGHTER: 22 HEAD 27-28 LBS. 90.00-98.00, WEIGHTED AVERAGE 27.32, WEIGHTED PRICE 94.76; 65 HEAD 32-37 LBS. 85.00-106.00, WEIGHTED AVERAGE 34.63, WEIGHTED PRICE 94.52; 30 HEAD 45-49 LBS. 88.00-94.00, WEIGHTED AVERAGE 48.33, WEIGHTED PRICE 93.07; 16 HEAD 54-57 LBS. 70.00-92.00, WEIGHTED AVERAGE 55.88, WEIGHTED PRICE 77.97; 4 HEAD 87 LBS. 46.00, WEIGHTED AVERAGE 87.00, WEIGHTED PRICE 46.00.

AS IS PIGS: 44 HEAD 43-58 LBS. 60.00-65.00, WEIGHTED AVERAGE 51.18, WEIGHTED PRICE 63.09.

ALL PIGS CONSIGNED TO WED. FEEDER PIG SALE MUST ORIGINATE FROM A QUALIFIED NEGATIVE OR MONITORED HERD.

Estimated Daily Livestock Slaughter

Under Federal Inspection
September 25, 1996

	CATTLE	CALVES	HOGS	SHEEP
WEDNESDAY 9/25/96 (EST)	127,000	8,000	367,000	16,000
WEEK AGO (EST)	120,000	8,000	366,000	15,000
YEAR AGO (ACT)	131,000	6,000	362,000	19,000
WEEK TO DATE (EST)	354,000	22,000	1,084,000	46,000
SAME PD LT WK (EST)	377,000	22,000	1,061,000	46,000
SAME PD LT YR (EST)	391,000	17,000	1,072,000	51,000

PREVIOUS DAY ESTIMATED TUESDAY, STEER AND HEIFER 93,000, COW AND BULL 25,000.
SOURCE: USDA MARKET NEWS, WASHINGTON, D.C.

Special Sale Work and Driving Horses

New Holland Sales Stables
New Holland, PA
Friday, September 20, 1996
Report Supplied by Auction
168 HEAD.
DRIVING HORSES: KENTUCKY 1000.00-2850.00; OHIO 675.00-1600.00 AND 1100.00-4650.00; PENNSYLVANIA 675.00-1400.00; NEW YORK 575.00-1400.00; NEW HAMPSHIRE 635.00-1000.00; OHIO 1000.00-3000.00.
LOCAL DRIVING 525.00-1550.00.
WORK HORSES, SINGLES 800.00-1400.00; PONIES 175.00-500.00.

New Holland Sales Stables Goat and Sheep Sale

Monday, September 23, 1996
GOATS: 1386 HEAD. BILLIES 70.00-100.00 AND 100.00-125.00 AND 125.00-155.00; NANNIES 40.00-50.00 AND 50.00-65.00; MUTTON 70.00-90.00; YEARLINGS 50.00-70.00; KIDS 40.00-55.00 AND 30.00-40.00 AND 20.00-30.00.
SHEEP: 818. ALL WEIGHTS, SLAUGHTER EWES 30.00-60.00; RAMS 30.00-50.00; 1 YEAR OLDS 40.00-80.00; 2 YEAR-OLDS 35.00-50.00.
LAMBS: 100-130 LBS. 80.00-100.00; 80-100 LBS. 95.00-105.00; 60-80 LBS. 95.00-110.00; 40-60 LBS. 90.00-120.00.

North Jersey Livestock

Hackettstown, NJ

Report Supplied by Auction
Tuesday, September 24, 1996
CALVES .12-1.65.
COWS .15-41% .
EASY COWS .12-26% .
FEEDERS 300-600 LBS. .16-.60.
HEIFERS .21-.52% .
BULLS .23%-.46% .
STEBERS .32%-.61 .
HOGS .32%-.44% .
ROASTING PIGS EACH 18.00-39.00.
BOARS .34.
SOWS .44.
SHEEP .11-.60.
LAMBS EACH 10.00-67.00.
LAMBS PER LB. .25-1.29.
GOATS EACH 10.00-125.00.
KIDS EACH 2.00-90.00.
TOTAL: 978.

Leaner Sows With Larger Litters Need Improved Nutrition

RAPID CITY, S.D.
— Because today's sows are leaner and produce larger litters than they did a decade ago, dietary adjustments may be necessary for them to produce enough milk for their piglets, according to Iowa State University researchers.

"All the data we have is based on sows that are different from today's sows," said Tom Sauber, a research assistant at ISU. "Today's sows are leaner and produce larger litters."

Sauber and ISU swine nutritionist Tim Stahly compared the nutritional needs of two types of sows — high lean growth sows and low lean growth sows.

The researchers found that when low levels of the amino acid lysine were provided in the diet, it limited the production of milk. As dietary lysine levels increased, milk production also increased, but the amount of increase was less apparent in the lean sows.

"The genetically lean sows don't have that extra layer of backfat to draw energy from, so the amount of energy provided by the daily feed allowance is particularly critical for these sows," Stahly said.

"We know that it's the genetic makeup of the sow that determines the animal's maximum milk-producing capacity, but environmental factors such as the nutrients she receives that determines what proportion of the sow's milk production capacity actually is expressed," Sauber said. The amount of milk produced daily by the two sow types was similar when their daily supply of nutrients from feed and the mobilized body stores were equal, he noted.

Sauber presented the results of the study to researchers, students and extension specialists gathered in Rapid City for the national meeting of the American Society of Animal Science, July 23-26. Nearly 2,000 people attended the meeting.

Polled Herefords & Gelbvieh PRIDE OF THE PASTURES SALE X Saturday, October 11, 1996 11:00 A.M.

Dunwalke Farm Far Hills, New Jersey
COWS/CALVES • BRED HEIFERS • SIRE PROSPECTS



456C - This powerful young sire's get and service sell.



FORECASTER - 28 descendants sell. A son topped the 1996 PA Bull Test Sale.



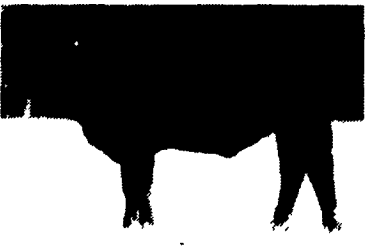
C69 - This Forecaster daughter and her April heifer calf sell.



D67 & F67 - This 3/22/96 heifer and her two-year-old dam sell.



E118, Grand Champion Female 1996 NY State Fair. She sells.



F51 - This black, polled 3/12/96 heifer sells.

10% Youth Discount
On Purchase Of
One 1996 Heifer

Call/FAX for
a Catalog

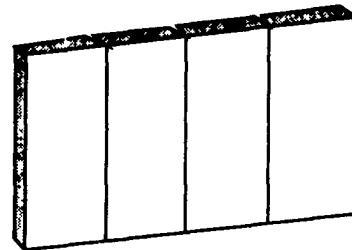
DUNWALKE FARM



660 Long Lane, Box 4 Far Hills, N.J. 07931
(908)234-0479 FAX: (908)234-1951

Located just north of I-78, Ext. 26

Lancaster Poured Walls



CALL FOR PRICES ON:

- Manure Pits
- Retaining Walls
- Basements
- Flat Work

We Do
SCS Work

can you think of a better wall than poured on site with lower construction costs and no maintenance?

Lancaster Silo Co., Inc.

2008 Horseshoe Rd. • Lancaster, PA • (717) 299-3721 • 800-770-3721

FIFTEENTH ANNUAL HERITAGE CELEBRATION

SATURDAY & SUNDAY
OCTOBER 5th & 6th
11 AM TO 5 PM

at the
Berks County Heritage Center,
Gruber Wagon Works,
Reading, PA

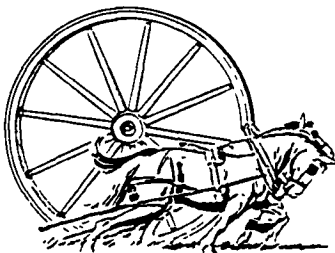


EVENTS THROUGHOUT THE WEEKEND

- | | |
|--|--|
| Saturday | Sunday |
| * Antique Auto Display | * Carriage and Wagon Show |
| * Antique Farm Equipment | * The Outlaws |
| * Variety of Educational Walks/ Lectures | * Ken Gehret Bluegrass |
| * Full Circle Music Society | * Plowing, Log Skidding and Pulling Demonstrations |
| * Sonny Miller & The Happy Valley Boys | * Antique Farm Equipment |
| * Country Western Dancers of Reading | |
| * Special demonstrations throughout the weekend include PA German Home & Farm Crafts, Arts and Crafts, PA German Canal & Mining Folk Music, family and kids games, food, and refreshments. | |

Shuttle Bus Service From...

- Penn State Berks Campus Student Lots
 - GPU Lot
 - Arrow Lot
- \$2.00 Parking Donation



Fun, Full Day For The Whole Family!

FOR MORE INFORMATION
Berks County Heritage Center
2201 Tulpehocken Rd.,
Wyomissing, PA
(610) 374-8839

WANTED

— Antique Farm Equipment • Antique Autos Pre-1959
• Carriages, Wagons & Sleighs
To register, or for more information call (610)374-8839