

Antique Building Material and Hardware.

Hand Hewn & Pit Sawed Beams:
 Oak, Chestnut, Pine.
 Assorted Sizes. Excellent.
Siding: Weathered Light and Dark;
Doors: Pine 2, 4, 6 Panels. Many Sizes;
Hardware: Strap Hinges and Box Locks German;
 Window Sashes and Shutters, Paneled and Louvered
 w/Hardware, Various Sizes.
(717) 665-4345 After 5:30 PM.

Industrial Paint Liquidation
 Just received thousands of gallons of highest quality industrial grade paint from military base closing and canceled government contracts. These paints were designed for extreme duty in military service, making them far exceed typical application in commercial or farm use. Buy now while available-most can be stored for several years.
You can't beat better paint!
 Epoxy - \$14/gal.
 Polyurethane - \$12/gal
 Alkyd Enamel - \$10/gal
 Specialty Coatings \$10-\$14/gal
 \$40 to \$60 value.
 Call for color availability. 10 gallon min. purchase.
 2 locations - Lancaster and Bridgeport, PA
 Heritage Equipment, Inc
 610-942-4116

GRABER SUPPLY

Route 41
 Atglen, Pa. 19310

800-964-1550
 610-593-3500

... LOCATION...
 20 miles East of Lancaster, PA on Hwy 41
 or 27 miles North of Wilmington, Delaware

Post & Frame Building Materials Metal Roofing Sale

- Painted Galvanized 29 GA. #2.....\$40.43 sq.
- Prime Painted Galvanized 29 GA.....\$43.59 sq.
- Premium Painted Galvalume 29 GA.....\$46.75 sq.

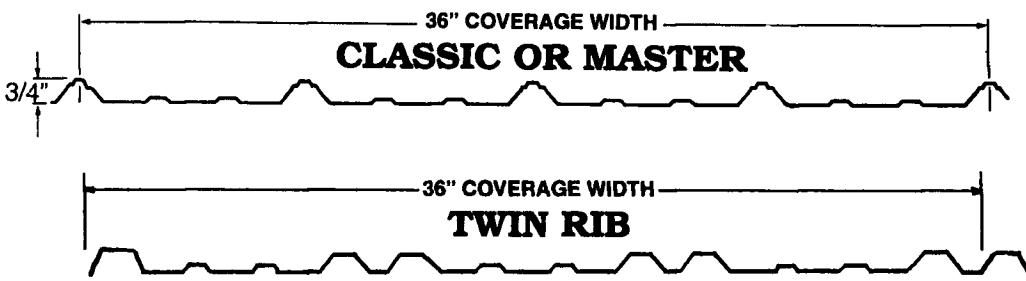
- 26 & 29 Gauge
- Window Doors
- Insulation
- Overhead Garage Doors
- Electric Openers
- Trusses



GREENWOOD METAL FORMING

265 Meadow Valley Rd., Lititz, PA 17543
 717-626-9672 • 800-522-9956 • Fax 717-627-6092

MANUFACTURERS OF METAL ROOFING & SIDING PRODUCTS



ALL PANELS CUT TO LENGTH

Options:

- 29 Gauge Painted in 13 Colors
- 29 Gauge Galvanized or Galvalume
- 26 Gauge Galvalume
- .018 and .024 Mill Finished Alum.
- 26 Gauge 409 Stainless Steel
- 24 Gauge Standing Seam Panels

Other Accessories:

- Screws, Nails; Standard & Special Trims, Sliding Door Frames, Track & Hardware, Prehung Doors & Windows
- 5" & 6" K-Style Alum. Seamless Gutter, 32 Colors

KW Pole Buildings



- Horsebarns • Riding Arenas • Livestock Facilities
- Implement Sheds • Storage Buildings • Garages

- ★ Quality Built, Custom Engineered; Agricultural, Commercial and Residential Buildings.
- ★ 20 Yr. Painted Steel Siding & Trims With A Large Selection Of Colors.
- ★ T1-11, Cedar Board & Batten And Vinyl Siding Also Available.
- ★ Custom Designed Dutch Doors & Horse Stalls.

Call Us For A Free Estimate - Fully Insured

KW Construction

Bethel, PA 19507

(717) 865-0825

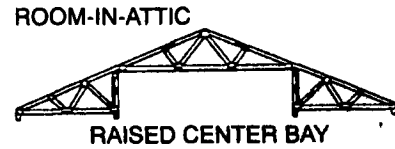
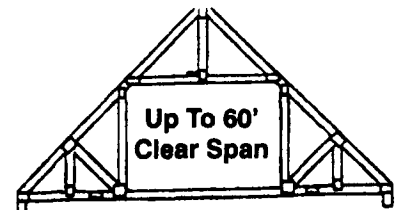
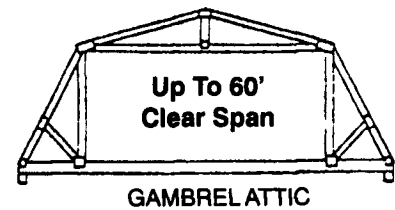
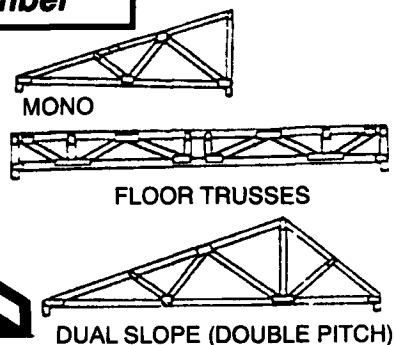
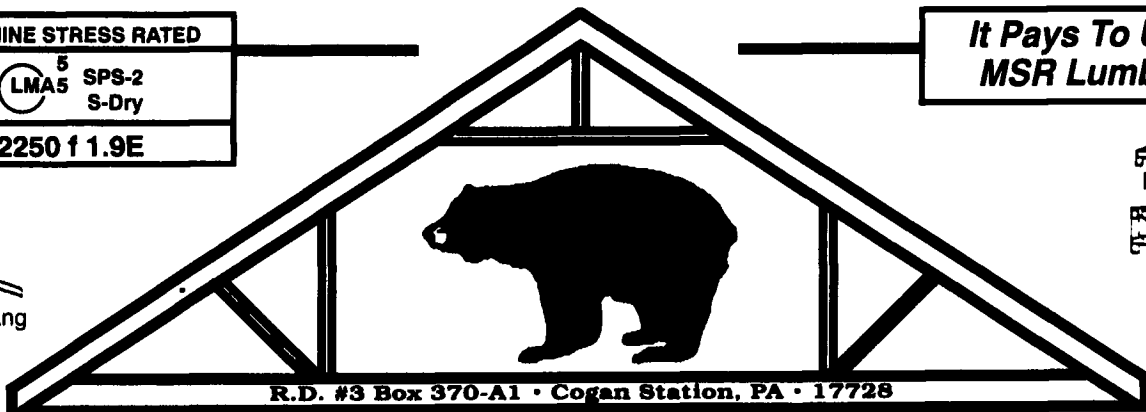
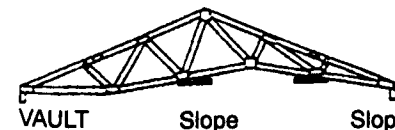
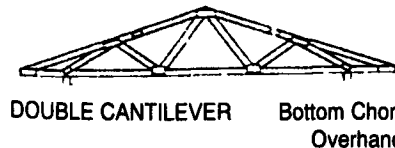
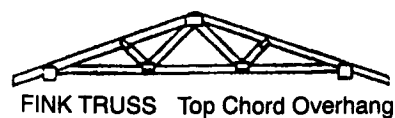


MACHINE STRESS RATED

LMA5 SPS-2 S-Dry

2250 f 1.9E

It Pays To Use MSR Lumber



BLACK BEAR TRUSS CORP.

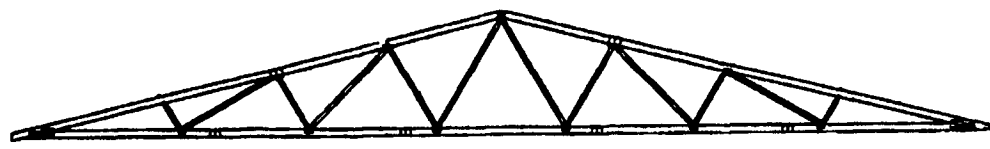
"OUR TRUSSES BEAR UP"

On-Site In Ten Days

- ✓ Laser-BUILT
 - ✓ Laser-STRAIGHT
 - ✓ Bull-STRONG
 - ✓ Crane Optional with Delivery
 - ✓ Cellular Phones in all Delivery Trucks
- with MSR-SPF Western Lumber

For a FREE Quote
 Call (717) 998-2391
 or 1-800-326-9689
 Fax (717) 998-9875

Hrs: M-F 7am-6pm; Sat. by appt.



HORSE BARNs • RIDING ARENAS • COMMERCIAL & RESIDENTIAL