

Oklahoma City Feeder Cattle
Oklahoma City, OK
Wed Sept 18, 1996

USDA-OK Dept Ag Market News
Oklahoma National Stockyards - Weekly Cattle Summary

Compared to last week: Feeder cattle and calves steady to 1.00 higher. Demand very good for feeder cattle and thin to medium fleshed calves; just fair for fleshy calves. Quality of supply and conditions similar to last week. Quality average to many plain. Despite cool, overcast weather cattle filled freely following heavy weekend rains. Weigh-ups average to full. Flesh conditions of feeders medium to many thin; calf flesh medium to fleshy, few thin. Slaughter cows 2.00 lower. Slaughter bulls 1.00-2.00 lower. Demand from packers moderate at lower levels. Fall cow run is on with several herd dispersals in supply. Total of 850 cows and bulls sold with 80 percent going to packers. Receipts this week 9,500; last week 13,160; last year 8,796. Supply consisted of 60 percent yearlings and calves over 600 lbs; 31 percent calves under 600 lbs; 9 percent cows and bulls. Prices follow with weighted average weight and price in parenthesis.

Feeder Steers: Medium and Large 1 350-400 lbs (371 lbs) 69.00-73.25 (71.43); 400-500 lbs (450 lbs) 65.00-73.50 (69.68); 500-550 lbs (524 lbs) 65.00-70.00 (66.78); 550-600 lbs (570 lbs) 60.25-65.75 (63.28); 600-650 lb calves (627 lbs) 60.00-65.50 (63.45); 600-700 lb yearlings (650 lbs) 62.50-66.75 (64.63); 700-800 lbs (750 lbs) 62.75-66.75 (64.52); 800-850 lbs (825 lbs)

63.25-65.50 (64.31); 850-900 lbs (869 lbs) 60.75-65.50 (63.57). Holsteins: Large 2 475-600 lbs 40.75-43.25; 700-800 lbs 42.75-46.25; 800-900 lbs 40.00-43.25.

Feeder Heifers: Medium and Large 1 few 400-450 lbs (422 lbs) 56.00-59.00 (57.93); 450-500 lbs (480 lbs) 56.50-62.25 (59.71); 500-600 lb calves (550 lbs) 56.50-62.00 (58.40); 600-650 lb calves (617 lbs) 56.25-60.25 (58.14); 500-600 lb yearlings (550 lbs) 58.00-62.25 (59.74); 600-700 lb yearlings (650 lbs) 57.00-62.00 (59.31); 700-800 lbs (750 lbs) 58.00-63.50 (60.88); 800-850 lbs (808 lbs) 58.25-62.75 (60.51).

Slaughter Cows: Average dressing Cutters 27.00-30.50, Utilities 28.50-31.50; high dressing Cutters 29.00-32.00, Utilities 32.00-34.50; low dressing Cutters 25.00-28.00, Utilities 26.00-29.50. Canner and low Cutter 21.00-24.50.

Estimated dressed cost at Oklahoma National Stockyards: Cutter 61.65; Boning Utility 61.30; Breaking Utility 59.15; Canner and low Cutter 58.65. Bulls 70.15, fleshy bulls 63.10.

Slaughter Bulls: Yield Grade 1 1300-2000 lbs average dressing 36.50-40.00; high dressing 40.00-43.50, high dressing/high boning 43.50-44.00; low dressing 35.00-39.00, 1050-1300 lbs 31.50-34.50.

Replacement Cows: Pretested for Bangs, pregnancy, and age Medium and Large 1 2-3 yr old 750-1050 lbs 3-5 months bred avg quality 325.00-425.00; 4-6 yr old 950-1200 lbs 3-8 months bred avg quality 350.00-425.00; 6-9 yr old 900-1000 lbs 2-5 months bred avg quality 275.00.

Pairs: Medium and Large 1 2-6 yr old

1200-1300 lb cows 150-300 lb calf high quality 540.00-600.00; 3-6 yr old 975-1250 lb cows 150-300 lb calf avg quality 400.00-500.00; 7-10+ yr old 850-1200 lb cows 100-200 lb calf avg quality 330.00-400.00.

Frederick Livestock Auction

Frederick, Md.

September 16, 1996

Report Supplied by Auction

SLAUGHTER COWS: 98 HEAD. UTILITY 33.50-38.25; HIGH DRESSING TO 39.50; CANNERS 27.00-33.00; SHELLY 27.00 DOWN.

BULLS: FEW OFFERED. FED STEERS: 2 HIGH CHOICE 1100-1200 LBS. 68.00-69.25; LOW CHOICE 1000-1150 LBS. 60.00-64.00. HEIFERS: HOL 1200-1300 LBS. 39.50.

VEAL CALVES: 250 HEAD. LOW CHOICE 2 310 LBS. AT 55.00; CULLS 85-110 LBS. 14.00-20.00; 50-80 LBS. 8.00-15.00.

FARM CALVES: HOLSTEIN BULLS #1 95-120 LBS. 50.00-64.00; #2 30.00-50.00; 80-90 LBS. 18.00-30.00; HOLSTEIN HEIFERS #1 90-120 LBS. 120.00-150.00, 2 TO 180.00; #2 80-95 LBS. 30.00-85.00; BEEF X BULLS 30.00-45.00.

BUTCHER HOGS: 45 HEAD, 1.00 HIGHER. US#1-2 230-260 LBS. 53.00-54.00; 220-260 LBS. #1&3 52.00-52.75; 200-215 LBS. 49.00-50.00; FEW 270-295 LBS. 48.00-52.00.

STOCK CATTLE: STEERS 400-700

LBS. 43.00-49.00; 700-900 LBS. 45.00-51.00.

HEIFERS: 400-700 LBS. 37.00-43.00; 1 SM. HOL SPRINGER AT 680.00.

BULLS: NONE.

LAMBS: CHOICE 95-130 LBS. 81.00-87.00; 80-90 LBS. 92.00-94.00; 1 145 LB. AT 75.00.

GOATS: MEDIUM TO 48.00.

PIGS AND SHOATS: NONE.

SOWS: 500-550 LBS. 45.00-46.00; THIN 350-450 LBS. TO 38.00.

BOARS: 600 LBS. TO 36.00.

HATFIELD QUALITY MEATS...54.50 PLUS BONUS ON QUALITY HOGS.

BUYING STATION HELD EVERY TUES. AT FOUR STATES.

Grantsville Livestock

Grantsville, Maryland

Report Supplied by Auction

Sat., September 14, 1996

STOCK BULLS AND STEERS 200-500 LBS. 30.00-60.00.

STOCK HEIFERS 30.00-55.00.

SLAUGHTER STEERS GOOD TO CHOICE 60.00-67.25; MEDIUM TO GOOD 30.00-58.00.

HOLSTEIN STEERS GOOD 35.00-44.00; LIGHT 30.00-37.50.

SLAUGHTER HEIFERS GOOD TO CHOICE 60.00-65.75; MEDIUM TO GOOD 42.00-56.00.

BULLS HEAVY 35.00-45.00, LIGHT 34.25-46.00.

COWS FEW HIGH DRESSING UP TO 39.50, UTILITY HOLSTEIN 30.00-36.00, CANNERS 24.00-29.50, CULLS 23.00 AND DOWN.

VEALS GOOD TO CHOICE UP TO 65.00, MEDIUM TO GOOD 35.00-55.00.

BOB CALVES: 20.00 AND DOWN.

HOLSTEIN BULL CALVES RETURN TO FARM 90-120 LBS. 25.00-50.00.

HOLSTEIN HEIFER CALVES RETURN TO FARM 100-120 LBS., NONE AVAILABLE.

BEEF CROSS CALVES RETURN TO FARM UP TO 57.50.

HOGS: TOP QUALITY 51.00-57.00, HEAVY 50.00-55.00, LIGHT 40.00-50.00, FEEDER PIGS BY THE HEAD, UP TO 35.00.

SOWS: UP TO 50.50.

MALE HOGS: 25.00-35.00.

LAMBS: 70-85 LBS. 60.00-82.00, 85-125 LBS. UP TO 78.00; CULLS 60.00 AND DOWN.

SHEEP: UP TO 37.50.

GOATS: LARGE 50.00-112.00 HEAD; MEDIUM 20.00-45.00; SMALL 8.00-18.00.

ANNUAL FALL FEEDER SALE NOV. 2.

Westminster Livestock Auction

Hagerstown, Md.

September 17, 1996

Report supplied by auction

SLAUGHTER COWS: 101 HEAD, 2.00-3.00 HIGHER. UTILITY 32.00-36.50; HIGH DRESSING FEW TO 38.00; CANNERS 26.00-30.00; SHELLY 25.00 DOWN.

BULLS: 15 HEAD, 2.00 LOWER. YG#1 38.00-40.25; YG#2 34.00-38.00.

FED STEERS: MAINLY HOLSTEINS OFFERED. 1 HIGH CHOICE 1175 LBS. AT 69.25; SELECT 1100-1600 LBS. 53.00-56.00; HIGH CHOICE PRIME HOLSTEINS 61.00-63.50; SELECT 44.00-53.00.

FED HEIFERS: LOW CHOICE 1000-1200 LBS. 61.50-64.00; 1 1400 LB. AT 59.25; 1 CHOICE HOLSTEIN 1200 LBS. AT 49.25.

VEAL CALVES: 175 HEAD. CHOICE 1 235 LBS. AT 59.00; CULLS, PRICES LOWER. 85-110 LBS. 12.00-19.00; 50-80 LBS. 5.00-12.00.

FARM CALVES: HOLSTEIN BULLS #1 90-120 LBS. 50.00-68.00; #2 30.00-45.00; 80-90 LBS. 17.00-25.00; HOLSTEIN HEIFERS, FEW OFFERED. BEEF X BULLS 25.00-67.00.

BUTCHER HOGS: LIGHT RUN. US#1-2 250 LBS. TO 54.00; 220-260 LBS. #1-3 TO 52.00; 280-310 LBS. 45.00-50.00.

SOWS: FEW OFFERED; 400 LBS. TO 42.75.

BOARS: 400 LBS. TO 37.00.

STOCK CATTLE: 132 HEAD. STEERS 400-600 LBS. 44.00-55.00; 600-800 LBS. 46.00-59.50.

HEIFERS: FEW GOOD OFFERED. 300-500 LBS. 32.00-40.00; 500-700 LBS. 33.00-40.00; 1 SM. HOL SPRINGER AT 500.00.

BULLS: 300-500 LBS. 46.00-54.00; 500-700 LBS. 40.00-49.00; 700-900 LBS. 40.00-47.00.

LAMBS: CHOICE 90-120 LBS. 75.00-86.00; 70-90 LBS. 87.00-91.00; FEW 60-70 LBS. 95.00-105.00; 40-60 LBS. 89.00-90.00.

SHEEP: 35.00-45.00; YEARLING + 2 YR-OLDS 50.00-70.00.

GOATS: LARGE 70.00-95.00; MEDIUM 35.00-60.00; SMALL 20.00-35.00.

PIGS AND SHOATS: BY THE LB. GRADED SALE, 13 HEAD 36 LBS. 70.00-76.00; 26 HEAD 45 LBS. 70.00-87.00; 49 HEAD 51-57 LBS. 85.00-90.00; 24 HEAD 63 LBS. 85.00; 10 HEAD 87 LBS. 50.00.

NEXT TUES., SEPT. 24, SPECIAL FEEDER CATTLE SAEL AT 7:30 P.M.

Weaver Insurance Agency

'We're Here To Serve'

FARMERS



Tired Of Paying High Insurance Rates On Trucks You Seldom Use?

We Offer Competitive Prices On Trucks From Pickups to Tractor Trailers

We Offer All Types Of Farm And Agribusiness Insurance

Please Call For Quotations or Information

Carol - Diane - Ray - Roger

248B Maple Ave., Quarryville, PA 17566

(717) 786-1711 (800) 882-1415

HAY, STRAW & GRAIN SALE

Every Thursday at 12 NOON

Vintage Sales

Stables, Inc.

(Rt. 30, 10 miles east of Lancaster in Paradise, PA)

For info. (717) 442-4181 bus. (610) 458-8518 home

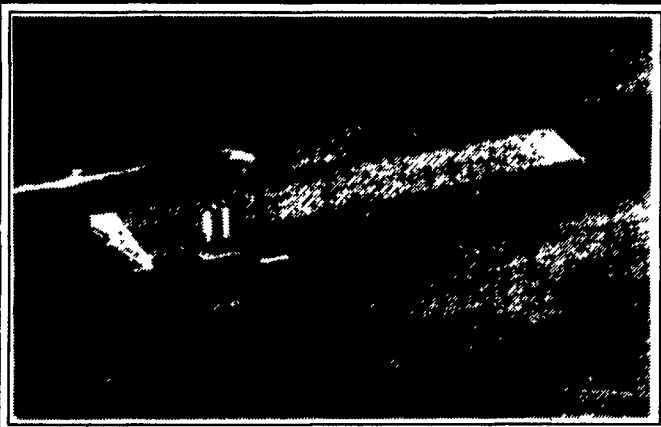
Improve Your Cash Flow with 1,000 - 2,000 Head Finishing Facilities

Contracts available for existing or new buildings within 75 miles of Elizabethtown, PA

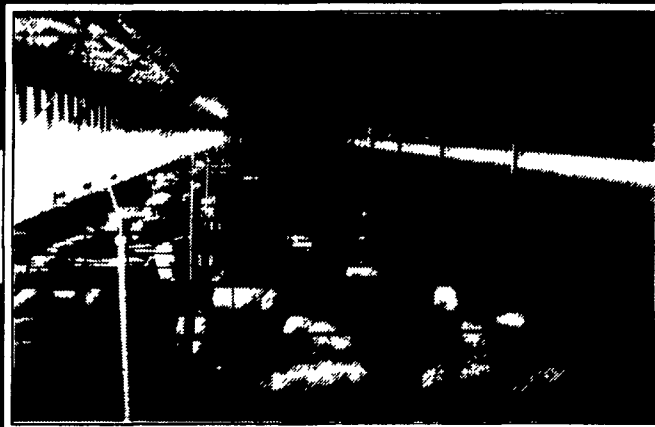


419 West High Street

Elizabethtown, PA 17022-2189



Excellent Pork Production Facilities



Quality Animals & Service

White Oak Mills / Wagner Enterprises Can Contribute to Your Total Agricultural Profitability . . .

- Modest Labor Requirements
- Building Design & Finishing Programs
- Quality Feeder Pigs, Feed and Service
- Positive Cash Flow & Depreciation Write-Offs
- Superior On-Farm Technical Support



Quality Products & Service Working For You

Call (717) 367-1525 or Toll-Free (800) 468-5524