

Specht Is All-American Image Winner

(Continued from Page A1)

the board of directors and show superintendent for 10 years.

The specially crafted stained glass hanging mirror which Specht will receive is inscribed "Awarded to an individual who has enhanced the image of the Pennsylvania All-American Dairy Show by significant contributions toward its reputation, prestige and welfare." John L. Morris, the 1995 Image Award winner and chairman of the awards committee, said, "Larry has worked diligently to improve the show and has handled the many operational problems in a deliberate and unassuming manner. The All-American Show is immeasurably better because of his unselfish efforts."

This is the fourth year the Image Award has been presented. In

addition to Morris, other winners include John Walker, Pittsburgh; Lee Yost, deceased; and Stephen Spencer, State College.

Specht's pedigree reads like an "All-American" farm boy. Reared on a dairy farm in New York State, he was a member of both 4-H and FFA. He attended Cornell University where he earned a BS degree. He earned both a Master Degree and a Ph.D. degree from Michigan State University.

He was a 4-H Club agent in Oneida County, New York, before coming to Pennsylvania as an extension dairy specialist with the University. For 22 years Specht edited the "Dairy Digest," a Dairy extension newsletter which provides reference material to county agents and industry leaders.

As an adviser to Pennsylvania DHIA, Specht was instrumental in the conversion of the DHIA program from hand-calculated records to electronic data processing.

In his leadership capacity with Pennsylvania-based AI units, his

innovative ideas of herdmate comparison and "sons of sires" reports in establishing breeding value have been recognized as milestones in measuring genetic progress. He also promoted young sire testing programs in the AI industry, the development of DHIA cow and sire evaluation reports and the information that would lead to more accurate sire evaluation.

Specht also served as an adviser to the Pennsylvania Dairymen's Association, and is a member of the American Dairy Science Association. A supporter of the Dairy Shrine, he has served as Pennsylvania membership chairman, and on its board of directors.

The award is presented as a recognition and deep appreciation for his efforts on behalf of the Pennsylvania All-American Dairy Show. Specht and his wife Elizabeth, also a Penn State graduate, have six children, five of whom graduated from Penn State.

World Dairy Expo Is 30

MADISON, Wis. — Two partners who have helped bring Wisconsin's dairy industry to the world will celebrate 30 years of success during opening ceremonies for the 1996 World Dairy Expo.

The 30th Expo will be held at the Dane County Expo Center in Madison, Wisconsin, Oct. 2-6.

World Dairy Expo and the Wisconsin Department of Agriculture, Trade and Consumer Protection have invited past officials and dairy industry leaders to contribute mementos to a milk-can-turned-time capsule. Sealed into the can will be items representing dairying 30 years ago and today, along with some predictions for the next 30 years.

The capsule will be stored and opened at the end of the next 30 years. The opening ceremony will be at 9 a.m., Oct. 2 in front of the globe on the Expo grounds.

The first World Dairy Expo was held in 1967. Known in its early years at the World Food Exposition, World Dairy Expo has seen tremendous growth over the past 30 years. In 1995 more than 68,700 people came from 78 countries to see 1,800 head of cattle compete in seven breed shows along with more than 1,200 booths of dairy technology exhibits.

That was also the first year that the state agriculture department's marketing division ventured into world markets, establishing ties with Japanese importers and participating in an international food show.

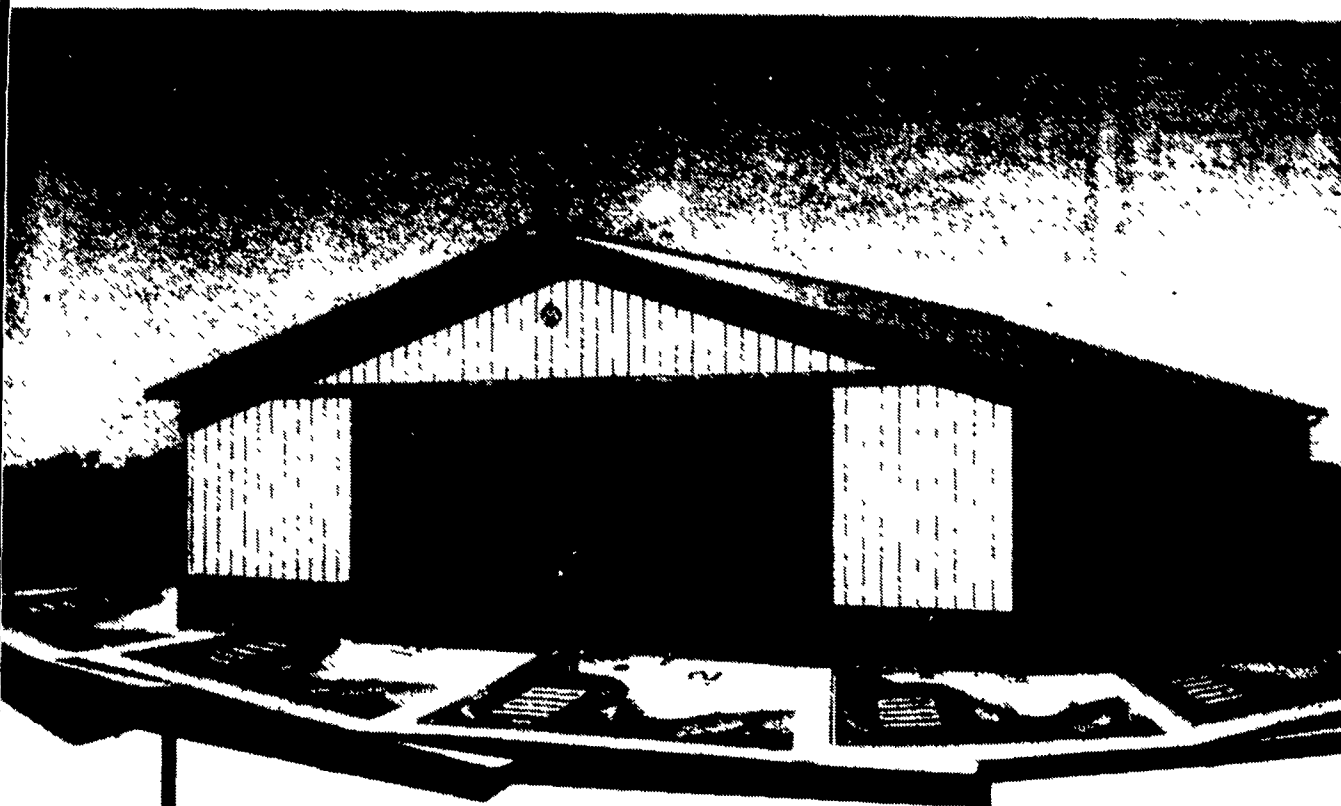
"When we began offering export services in 1966, one of our earliest steps was to help organize the first World Dairy Expo," said Debbie Crave, current director of the ag department's International Agri-Business Center.

Hours for World Dairy Expo are 9 a.m. to 5 p.m. Wednesday through Saturday and 9:30 a.m. to 4 p.m. on Sunday.

For more information on opening ceremonies or to receive a daily schedule contact World Dairy Expo at 608-224-6455.

ORDER NOW!

Prepare Site Or Install Concrete Foundation Before December 31, 1996 For 1997 Construction and Receive \$500.

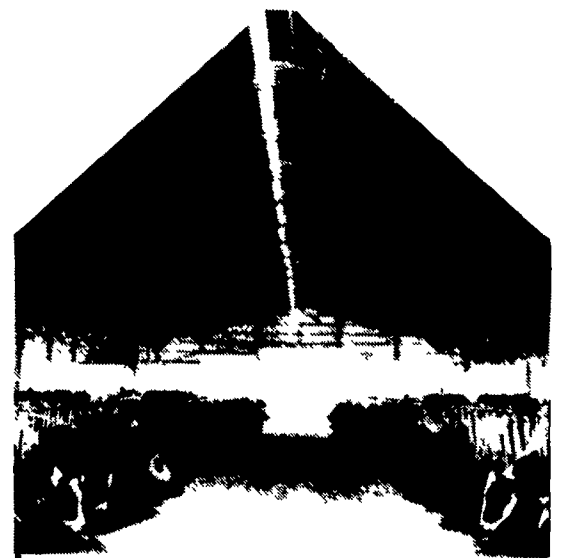


That's right! If your plans for 1996/1997 include a new building of any kind, call Morton Buildings now! Simply prepare a level building site or concrete foundation by December 31, 1996 . . . for construction immediately thereafter in 1997 . . . and Morton Buildings will pay you \$500! What's more, you'll avoid anticipated 1997 price increases. Take advantage of low winter prices and order now! See your local sales consultant for details.

CONTACT:
717/624-3331
3368 York Rd.
Gettysburg, PA 17325

908/454-7900
P.O. Box 126,
Phillipsburg, NJ 08865

800-447-7436
MORTON BUILDINGS
P. O. Box 399, Morton, IL 61550
© 1994 Morton Buildings, Inc



AGRICULTURAL ENGINEERING CONSULTANTS

"CALL US TO DESIGN YOUR NEXT BUILDING PROJECT"

FARMSTEAD PLANNING

BUILDING DESIGN

BLUEPRINT DRAFTING

VENTILATION DESIGN

DAIRY FACILITIES DESIGN

Timber Tech Engineering, Inc.

P.O. Box 145

256 West Franklin Street

Womelsdorf, PA 19567

PH: (610) 589-4589

FAX: (610) 589-5384

